

StripSeries B300 Blades

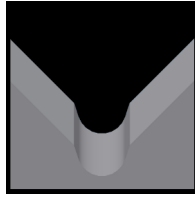
Used in the following *Schleuniger* machines:

StripSeries B300

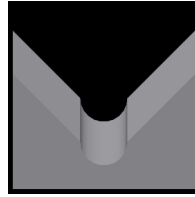
Available StripSeries B300 Blade Form Geometries Include:



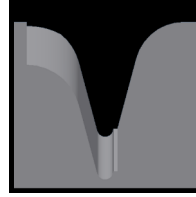
Universal



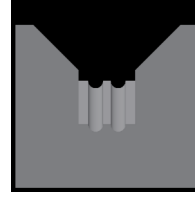
M-Series®



Full-Radius



Cyclonic-V®



Multi-Conductor



Schleuniger SB300 Universal Blades

Mechtrix Description	Mechtrix Part Number	Blade Form Diameter		OEM Part Number
		(in)	(mm)	
Schleuniger SB300UV Universal Blade - Tool Steel	47060	-	-	STR-660529
Schleuniger SB300UV Universal Blade - Carbide	47062	-	-	STR-663545



Schleuniger SB300 M-Series® Blades

Mechtrix Description	Mechtrix Part Number	Blade Form Diameter		OEM Part Number
		(in)	(mm)	
SB300M-0.3 Strip Blade	47064-0.3	0.0118	0.3	-
SB300M-0.4 Strip Blade	47064-0.4	0.0158	0.4	-
SB300M-0.5 Strip Blade	47064-0.5	0.0197	0.5	-
SB300M-0.6 Strip Blade	47064-0.6	0.0236	0.6	-
SB300M-0.7 Strip Blade	47064-0.7	0.0276	0.7	-
SB300M-0.8 Strip Blade	47064-0.8	0.0315	0.8	-
SB300M-0.9 Strip Blade	47064-0.9	0.0354	0.9	-
SB300M-1.0 Strip Blade	47064-1.0	0.0394	1.0	-
SB300M-1.1 Strip Blade	47064-1.1	0.0433	1.1	-
SB300M-1.2 Strip Blade	47064-1.2	0.0472	1.2	-
SB300M-1.3 Strip Blade	47064-1.3	0.0512	1.3	-
SB300M-1.4 Strip Blade	47064-1.4	0.0551	1.4	-
SB300M-1.5 Strip Blade	47064-1.5	0.0591	1.5	-
SB300M-1.6 Strip Blade	47064-1.6	0.0630	1.6	-
SB300M-1.7 Strip Blade	47064-1.7	0.0669	1.7	-
SB300M-1.8 Strip Blade	47064-1.8	0.0709	1.8	-
SB300M-1.9 Strip Blade	47064-1.9	0.0748	1.9	-
SB300M-2.0 Strip Blade	47064-2.0	0.0787	2.0	-
SB300M-2.1 Strip Blade	47064-2.1	0.0827	2.1	-
SB300M-2.2 Strip Blade	47064-2.2	0.0866	2.2	-
SB300M-2.3 Strip Blade	47064-2.3	0.0906	2.3	-
SB300M-2.4 Strip Blade	47064-2.4	0.0945	2.4	-
SB300M-2.5 Strip Blade	47064-2.5	0.0984	2.5	-
SB300M-2.6 Strip Blade	47064-2.6	0.1024	2.6	-
SB300M-2.7 Strip Blade	47064-2.7	0.1063	2.7	-
SB300M-2.8 Strip Blade	47064-2.8	0.1102	2.8	-
SB300M-2.9 Strip Blade	47064-2.9	0.1142	2.9	-
SB300M-3.0 Strip Blade	47064-3.0	0.1181	3.0	-

Continued on Next Page

StripSeries B300 Blades

Used in the following *Schleuniger* machines:

StripSeries B300



Schleuniger SB300 M-Series® Blades (continued)

Mechtrix Description	Mechtrix Part Number	Blade Form Diameter		OEM Part Number
		(in)	(mm)	
SB300M-3.1 Strip Blade	47064-3.1	0.1221	3.1	-
SB300M-3.2 Strip Blade	47064-3.2	0.1260	3.2	-
SB300M-3.3 Strip Blade	47064-3.3	0.1299	3.3	-
SB300M-3.4 Strip Blade	47064-3.4	0.1339	3.4	-
SB300M-3.5 Strip Blade	47064-3.5	0.1378	3.5	-
SB300M-3.6 Strip Blade	47064-3.6	0.1417	3.6	-
SB300M-3.7 Strip Blade	47064-3.7	0.1457	3.7	-
SB300M-3.8 Strip Blade	47064-3.8	0.1496	3.8	-
SB300M-3.9 Strip Blade	47064-3.9	0.1535	3.9	-
SB300M-4.0 Strip Blade	47064-4.0	0.1575	4.0	-



Schleuniger SB300 Full Radius Blades

Mechtrix Description	Mechtrix Part Number	Blade Form Diameter		OEM Part Number
		(in)	(mm)	
SB300-0.3D Strip Blade	47063-0.3	0.0118	0.3	-
SB300-0.4D Strip Blade	47063-0.4	0.0158	0.4	-
SB300-0.5D Strip Blade	47063-0.5	0.0197	0.5	-
SB300-0.6D Strip Blade	47063-0.6	0.0236	0.6	-
SB300-0.7D Strip Blade	47063-0.7	0.0276	0.7	-
SB300-0.8D Strip Blade	47063-0.8	0.0315	0.8	-
SB300-0.9D Strip Blade	47063-0.9	0.0354	0.9	-
SB300-1.0D Strip Blade	47063-1.0	0.0394	1.0	-
SB300-1.1D Strip Blade	47063-1.1	0.0433	1.1	-
SB300-1.2D Strip Blade	47063-1.2	0.0472	1.2	-
SB300-1.3D Strip Blade	47063-1.3	0.0512	1.3	-
SB300-1.4D Strip Blade	47063-1.4	0.0551	1.4	-
SB300-1.5D Strip Blade	47063-1.5	0.0591	1.5	-
SB300-1.6D Strip Blade	47063-1.6	0.0630	1.6	-
SB300-1.7D Strip Blade	47063-1.7	0.0669	1.7	-
SB300-1.8D Strip Blade	47063-1.8	0.0709	1.8	-
SB300-1.9D Strip Blade	47063-1.9	0.0748	1.9	-
SB300-2.0D Strip Blade	47063-2.0	0.0787	2.0	-
SB300-2.1D Strip Blade	47063-2.1	0.0827	2.1	-
SB300-2.2D Strip Blade	47063-2.2	0.0866	2.2	-
SB300-2.3D Strip Blade	47063-2.3	0.0906	2.3	-
SB300-2.4D Strip Blade	47063-2.4	0.0945	2.4	-
SB300-2.5D Strip Blade	47063-2.5	0.0984	2.5	-
SB300-2.6D Strip Blade	47063-2.6	0.1024	2.6	-
SB300-2.7D Strip Blade	47063-2.7	0.1063	2.7	-
SB300-2.8D Strip Blade	47063-2.8	0.1102	2.8	-
SB300-2.9D Strip Blade	47063-2.9	0.1142	2.9	-
SB300-3.0D Strip Blade	47063-3.0	0.1181	3.0	-
SB300-3.1D Strip Blade	47063-3.1	0.1221	3.1	-
SB300-3.2D Strip Blade	47063-3.2	0.1260	3.2	-
SB300-3.3D Strip Blade	47063-3.3	0.1299	3.3	-

Continued on Next Page

StripSeries B300 Blades

Used in the following *Schleuniger* machines:

StripSeries B300



Schleuniger SB300 Full Radius Blades (continued)

Mechtrix Description	Mechtrix Part Number	Blade Form (in)	Diameter (mm)	OEM Part Number
SB300-3.4D Strip Blade	47063-3.4	0.1339	3.4	-
SB300-3.5D Strip Blade	47063-3.5	0.1378	3.5	-
SB300-3.6D Strip Blade	47063-3.6	0.1417	3.6	-
SB300-3.7D Strip Blade	47063-3.7	0.1457	3.7	-
SB300-3.8D Strip Blade	47063-3.8	0.1496	3.8	-
SB300-3.9D Strip Blade	47063-3.9	0.1535	3.9	-
SB300-4.0D Strip Blade	47063-4.0	0.1575	4.0	-



Schleuniger StripSeries B300 Cyclonic-V® Blades

Patented **Mechtrix Cyclonic-V® Stripping Blades** are another innovative solution available for stripping the most difficult wire insulations in these machines. This stripping blade design offers more precise control of the depth of the cut into the insulation and improved centering of the wire in the stripping blades.

[Please Contact Mechtrix for Assistance](#)



Schleuniger StripSeries B300 Multi-Conductor Blades

Multi-Conductor Blades are available for the StripSeries B300 machines.

[Please Contact Mechtrix for Assistance](#)