

# Gamma 255 Series Blades

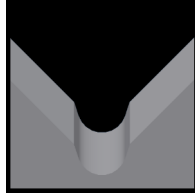
Used in the following Komax machines:

Gamma 252, 253, 255, & 263

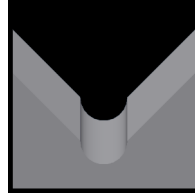
## Available Gamma 255 Blade Form Geometries Include:



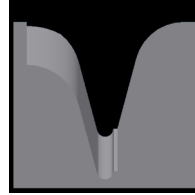
V-Style



M-Series®



Full-Radius



Cyclonic-V®



## Komax Gamma 252/253/255/263 Striping Blades

| Mechtrix Description                 | Mechtrix Part Number | Blade Form Diameter |      | OEM Part Number    |
|--------------------------------------|----------------------|---------------------|------|--------------------|
|                                      |                      | (in)                | (mm) |                    |
| K255-R0.07 Strip Blade w/TiN Coating | 29912-CT1            | 0.0055              | 0.14 | 0065331            |
| K255-R0.10 Strip Blade w/TiN Coating | 29913-CT1            | 0.0079              | 0.20 | 0065332            |
| K255-R0.15 Strip Blade w/TiN Coating | 33112-CT1            | 0.0118              | 0.30 | 0081843            |
| K255-R0.20 Strip Blade w/TiN Coating | 32745-CT1            | 0.0157              | 0.40 | -                  |
| K255-R0.25 Strip Blade w/TiN Coating | 28959-CT1            | 0.0197              | 0.50 | 0065333            |
| K255-R0.35 Strip Blade w/TiN Coating | 31198-CT1            | 0.0276              | 0.70 | 0325101<br>0350626 |
| K255-R0.40 Strip Blade w/TiN Coating | 33325-CT1            | 0.0315              | 0.80 | -                  |
| K255-R0.50 Strip Blade w/TiN Coating | 28921-CT1            | 0.0394              | 1.00 | 0065334            |
| K255-R0.65 Strip Blade w/TiN Coating | 31805-CT1            | 0.0512              | 1.30 | 0356523            |
| K255-R0.75 Strip Blade w/TiN Coating | 28998-CT1            | 0.0591              | 1.50 | 0065335            |
| K255-R1.00 Strip Blade w/TiN Coating | 29714-CT1            | 0.0787              | 2.00 | 0065336            |
| K255-R1.50 Strip Blade w/TiN Coating | 29715-CT1            | 0.1181              | 3.00 | 0320825            |
| K255-R2.00 Strip Blade w/TiN Coating | 36096-CT1            | 0.1575              | 4.00 | 0320826            |



## Komax Gamma 252/253/255/263 Striping Blades w/0.1 Center Cut-off Form

| Mechtrix Description                            | Mechtrix Part Number | Blade Form Diameter |      | OEM Part Number |
|-------------------------------------------------|----------------------|---------------------|------|-----------------|
|                                                 |                      | (in)                | (mm) |                 |
| K255-R0.07/R0.1/R0.07 Strip Blade w/TiN Coating | 38359-CT1            | 0.0055              | 0.14 | -               |
| K255-R0.10/R0.1/R0.10 Strip Blade w/TiN Coating | 29913-CT1            | 0.0079              | 0.20 | 0065332         |
| K255-R0.15/R0.1/R0.15 Strip Blade w/TiN Coating | 38360-CT1            | 0.0118              | 0.30 | -               |
| K255-R0.20/R0.1/R0.20 Strip Blade w/TiN Coating | 38361-CT1            | 0.0157              | 0.40 | -               |
| K255-R0.25/R0.1/R0.25 Strip Blade w/TiN Coating | 38362-CT1            | 0.0197              | 0.50 | 0331835         |
| K255-R0.35/R0.1/R0.35 Strip Blade w/TiN Coating | 38363-CT1            | 0.0276              | 0.70 | 0332691         |
| K255-R0.40/R0.1/R0.40 Strip Blade w/TiN Coating | 38364-CT1            | 0.0315              | 0.80 | -               |
| K255-R0.50/R0.1/R0.50 Strip Blade w/TiN Coating | 36963-CT1            | 0.0394              | 1.00 | 0332037         |
| K255-R0.65/R0.1/R0.65 Strip Blade w/TiN Coating | 38365-CT1            | 0.0512              | 1.30 | -               |
| K255-R0.75/R0.1/R0.75 Strip Blade w/TiN Coating | 37775-CT1            | 0.0591              | 1.50 | 0332044         |
| K255-R1.00/R0.1/R1.00 Strip Blade w/TiN Coating | 36342-CT1            | 0.0787              | 2.00 | 0332046         |
| K255-R1.50/R0.1/R1.50 Strip Blade w/TiN Coating | 38366-CT1            | 0.1181              | 3.00 | 0332049         |
| K255-R2.00/R0.1/R2.00 Strip Blade w/TiN Coating | 38367-CT1            | 0.1575              | 4.00 | 0332050         |

# Gamma 255 Series Blades

Used in the following Komax machines:

Gamma 252, 253, 255, & 263



## Komax Gamma 252/253/255/263 M-Series® Stripping Blades

| Mechtrix Description                | Mechtrix    | Blade Form Diameter |      | OEM         |
|-------------------------------------|-------------|---------------------|------|-------------|
|                                     | Part Number | (in)                | (mm) | Part Number |
| K255M-0.3 Strip Blade w/TiN Coating | 38007-CT1   | 0.0118              | 0.3  | -           |
| K255M-0.4 Strip Blade w/TiN Coating | 31448-CT1   | 0.0158              | 0.4  | -           |
| K255M-0.5 Strip Blade w/TiN Coating | 30322-CT1   | 0.0197              | 0.5  | -           |
| K255M-0.6 Strip Blade w/TiN Coating | 31326-CT1   | 0.0236              | 0.6  | -           |
| K255M-0.7 Strip Blade w/TiN Coating | 31447-CT1   | 0.0276              | 0.7  | -           |
| K255M-0.8 Strip Blade w/TiN Coating | 31389-CT1   | 0.0315              | 0.8  | -           |
| K255M-0.9 Strip Blade w/TiN Coating | 32415-CT1   | 0.0354              | 0.9  | -           |
| K255M-1.0 Strip Blade w/TiN Coating | 29699-CT1   | 0.0394              | 1.0  | -           |
| K255M-1.1 Strip Blade w/TiN Coating | 32804-CT1   | 0.0433              | 1.1  | -           |
| K255M-1.2 Strip Blade w/TiN Coating | 33265-CT1   | 0.0472              | 1.2  | -           |
| K255M-1.3 Strip Blade w/TiN Coating | 31804-CT1   | 0.0512              | 1.3  | -           |
| K255M-1.4 Strip Blade w/TiN Coating | 35797-CT1   | 0.0551              | 1.4  | -           |
| K255M-1.5 Strip Blade w/TiN Coating | 34847-CT1   | 0.0591              | 1.5  | -           |
| K255M-1.6 Strip Blade w/TiN Coating | 34682-CT1   | 0.0630              | 1.6  | -           |
| K255M-1.7 Strip Blade w/TiN Coating | 35682-CT1   | 0.0669              | 1.7  | -           |
| K255M-1.8 Strip Blade w/TiN Coating | 35072-CT1   | 0.0709              | 1.8  | -           |
| K255M-1.9 Strip Blade w/TiN Coating | 34848-CT1   | 0.0748              | 1.9  | -           |
| K255M-2.0 Strip Blade w/TiN Coating | 35650-CT1   | 0.0787              | 2.0  | -           |
| K255M-2.1 Strip Blade w/TiN Coating | 35454-CT1   | 0.0827              | 2.1  | -           |
| K255M-2.2 Strip Blade w/TiN Coating | 38368-CT1   | 0.0866              | 2.2  | -           |
| K255M-2.3 Strip Blade w/TiN Coating | 38369-CT1   | 0.0906              | 2.3  | -           |
| K255M-2.4 Strip Blade w/TiN Coating | 31703-CT1   | 0.0945              | 2.4  | -           |
| K255M-2.5 Strip Blade w/TiN Coating | 38370-CT1   | 0.0984              | 2.5  | -           |
| K255M-2.6 Strip Blade w/TiN Coating | 38371-CT1   | 0.1024              | 2.6  | -           |
| K255M-2.7 Strip Blade w/TiN Coating | 38372-CT1   | 0.1063              | 2.7  | -           |
| K255M-2.8 Strip Blade w/TiN Coating | 38373-CT1   | 0.1102              | 2.8  | -           |
| K255M-2.9 Strip Blade w/TiN Coating | 35651-CT1   | 0.1142              | 2.9  | -           |
| K255M-3.0 Strip Blade w/TiN Coating | 38374-CT1   | 0.1181              | 3.0  | -           |

# Gamma 255 Series Blades

Used in the following Komax machines:

Gamma 252, 253, 255, & 263



## Komax Gamma 252/253/255/263 Full Radius Blades

| Mechtrix Description                | Mechtrix    | Blade Form Diameter |      | OEM         |
|-------------------------------------|-------------|---------------------|------|-------------|
|                                     | Part Number | (in)                | (mm) | Part Number |
| K255-0.3D Strip Blade w/TiN Coating | 38375-CT1   | 0.0118              | 0.3  | -           |
| K255-0.4D Strip Blade w/TiN Coating | 38376-CT1   | 0.0158              | 0.4  | 310697      |
| K255-0.5D Strip Blade w/TiN Coating | 29700-CT1   | 0.0197              | 0.5  | -           |
| K255-0.6D Strip Blade w/TiN Coating | 35273-CT1   | 0.0236              | 0.6  | -           |
| K255-0.7D Strip Blade w/TiN Coating | 38377-CT1   | 0.0276              | 0.7  | -           |
| K255-0.8D Strip Blade w/TiN Coating | 37791-CT1   | 0.0315              | 0.8  | -           |
| K255-0.9D Strip Blade w/TiN Coating | 38378-CT1   | 0.0354              | 0.9  | -           |
| K255-1.0D Strip Blade w/TiN Coating | 37793-CT1   | 0.0394              | 1.0  | -           |
| K255-1.1D Strip Blade w/TiN Coating | 38379-CT1   | 0.0433              | 1.1  | -           |
| K255-1.2D Strip Blade w/TiN Coating | 37794-CT1   | 0.0472              | 1.2  | -           |
| K255-1.3D Strip Blade w/TiN Coating | 38380-CT1   | 0.0512              | 1.3  | -           |
| K255-1.4D Strip Blade w/TiN Coating | 38381-CT1   | 0.0551              | 1.4  | -           |
| K255-1.5D Strip Blade w/TiN Coating | 38382-CT1   | 0.0591              | 1.5  | -           |
| K255-1.6D Strip Blade w/TiN Coating | 38383-CT1   | 0.0630              | 1.6  | -           |
| K255-1.7D Strip Blade w/TiN Coating | 38384-CT1   | 0.0669              | 1.7  | -           |
| K255-1.8D Strip Blade w/TiN Coating | 38385-CT1   | 0.0709              | 1.8  | -           |
| K255-1.9D Strip Blade w/TiN Coating | 38356-CT1   | 0.0748              | 1.9  | -           |
| K255-2.0D Strip Blade w/TiN Coating | 38387-CT1   | 0.0787              | 2.0  | -           |
| K255-2.1D Strip Blade w/TiN Coating | 38388-CT1   | 0.0827              | 2.1  | -           |
| K255-2.2D Strip Blade w/TiN Coating | 38389-CT1   | 0.0866              | 2.2  | -           |
| K255-2.3D Strip Blade w/TiN Coating | 38390-CT1   | 0.0906              | 2.3  | -           |
| K255-2.4D Strip Blade w/TiN Coating | 38391-CT1   | 0.0945              | 2.4  | -           |
| K255-2.5D Strip Blade w/TiN Coating | 38392-CT1   | 0.0984              | 2.5  | -           |
| K255-2.6D Strip Blade w/TiN Coating | 38393-CT1   | 0.1024              | 2.6  | -           |
| K255-2.7D Strip Blade w/TiN Coating | 38394-CT1   | 0.1063              | 2.7  | -           |
| K255-2.8D Strip Blade w/TiN Coating | 38395-CT1   | 0.1102              | 2.8  | -           |
| K255-2.9D Strip Blade w/TiN Coating | 38396-CT1   | 0.1142              | 2.9  | -           |
| K255-3.0D Strip Blade w/TiN Coating | 38397-CT1   | 0.1181              | 3.0  | -           |



## Gamma 252/253/255/263 Cyclonic-V® Blades

Patented **Mechtrix Cyclonic-V® Stripping Blades** are another innovative solution available for stripping the most difficult wire insulations in these machines. This stripping blade design offers more precise control of the depth of the cut into the insulation and improved centering of the wire in the stripping blades.

[Please Contact Mechtrix for Assistance](#)