

# CrimpCenter 36/60/70 Series Blades

Used in the following *Schleuniger* machines:

CrimpCenter 36 | CrimpCenter 60 Series | CrimpCenter 70 Series

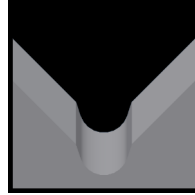
Available CrimpCenter 36/60/70 Series Blade Form Geometries Include:



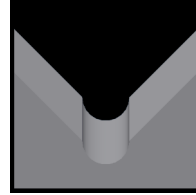
Universal



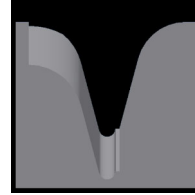
Cut-Off



M-Series®



Full-Radius



Cyclonic-V®



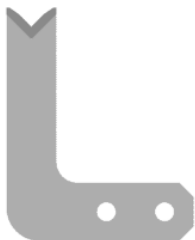
## CrimpCenter 36/60/70 Series Stripping Blades

Mechtrix Description	Mechtrix Part Number	Blade Form Diameter		OEM
		(in)	(mm)	Part Number
KA433-0.1 Stripping Blade w/Titanium Coating	21651-CT1	0.00787	0.20	50920.010.295
KA433-0.25 Stripping Blade w/Titanium Coating	32396-CT1	0.01969	0.50	50000.581.574
KA433-0.5 Stripping Blade w/Titanium Coating	21284-CT1	0.03937	1.00	50920.009.437
KA433-0.75 Stripping Blade w/Titanium Coating	21652-CT1	0.05906	1.50	50000.581.576
KA433-1.0 Stripping Blade w/Titanium Coating	21283-CT1	0.07874	2.00	50000.581.577
KA433-1.25 Stripping Blade w/Titanium Coating	32397-CT1	0.09843	2.50	50920.009.578
KA433-1.5 Stripping Blade w/Titanium Coating	21653-CT1	0.11811	3.00	50920.009.438
KA433-2.0 Stripping Blade w/Titanium Coating	21654-CT1	0.15748	4.00	50000.581.580
KA433-2.5 Stripping Blade w/Titanium Coating	27932-CT1	0.19690	5.00	-



## Schleuniger CrimpCenter 36/60/61/62/63/64/65/67/70 Cut-off Blades

Mechtrix Description	Mechtrix Part Number	Blade Form Diameter		OEM
		(in)	(mm)	Part Number
CrimpCenter Cut-off Blade	26444-CT1	-	-	50000.578.247
CrimpCenter Cut-off Blade (Carbide)	46352-CT1	-	-	50001.578.247 429688
CrimpCenter (DT) Cut-off Blade	26443-CT1	-	-	50000.578.248
CrimpCenter 36 Cut-off Blade	32503-CT1	-	-	50000.585.530
CrimpCenter 36 Cut-off Blade (DT)	34875-CT1	-	-	50000.585.532
CrimpCenter 36 Cut-off Blade (DT)	44911-CT1	-	-	438137



# CrimpCenter 36/60/70 Series Blades

Used in the following *Schleuniger* machines:

CrimpCenter 36 | CrimpCenter 60 Series | CrimpCenter 70 Series



## CrimpCenter 36/60/70 M-Series® Blades

Mechtrix Description	Mechtrix Part Number	Blade Form Diameter		OEM Part Number
		(in)	(mm)	
KA433M-0.3 Strip Blade w/TiN Coating	28043-CT1	0.0118	0.3	-
KA433M-0.4 Strip Blade w/TiN Coating	28044-CT1	0.0158	0.4	-
KA433M-0.5 Strip Blade w/TiN Coating	30581-CT1	0.0197	0.5	-
KA433M-0.6 Strip Blade w/TiN Coating	28827-CT1	0.0236	0.6	-
KA433M-0.7 Strip Blade w/TiN Coating	28964-CT1	0.0276	0.7	-
KA433M-0.8 Strip Blade w/TiN Coating	28392-CT1	0.0315	0.8	-
KA433M-0.9 Strip Blade w/TiN Coating	30510-CT1	0.0354	0.9	-
KA433M-1.0 Strip Blade w/TiN Coating	25196-CT1	0.0394	1.0	-
KA433M-1.1 Strip Blade w/TiN Coating	30029-CT1	0.0433	1.1	-
KA433M-1.2 Strip Blade w/TiN Coating	27209-CT1	0.0472	1.2	-
KA433M-1.3 Strip Blade w/TiN Coating	25193-CT1	0.0512	1.3	-
KA433M-1.4 Strip Blade w/TiN Coating	28965-CT1	0.0551	1.4	-
KA433M-1.5 Strip Blade w/TiN Coating	27973-CT1	0.0591	1.5	-
KA433M-1.6 Strip Blade w/TiN Coating	29840-CT1	0.0630	1.6	-
KA433M-1.7 Strip Blade w/TiN Coating	25197-CT1	0.0669	1.7	-
KA433M-1.8 Strip Blade w/TiN Coating	25195-CT1	0.0709	1.8	-
KA433M-1.9 Strip Blade w/TiN Coating	30374-CT1	0.0748	1.9	-
KA433M-2.0 Strip Blade w/TiN Coating	29378-CT1	0.0787	2.0	-
KA433M-2.1 Strip Blade w/TiN Coating	26820-CT1	0.0827	2.1	-
KA433M-2.2 Strip Blade w/TiN Coating	27974-CT1	0.0866	2.2	-
KA433M-2.3 Strip Blade w/TiN Coating	30033-CT1	0.0906	2.3	-
KA433M-2.4 Strip Blade w/TiN Coating	30039-CT1	0.0945	2.4	-
KA433M-2.5 Strip Blade w/TiN Coating	34043-CT1	0.0984	2.5	-
KA433M-2.6 Strip Blade w/TiN Coating	36443-CT1	0.1024	2.6	-
KA433M-2.7 Strip Blade w/TiN Coating	34044-CT1	0.1063	2.7	-
KA433M-2.8 Strip Blade w/TiN Coating	29919-CT1	0.1102	2.8	-
KA433M-2.9 Strip Blade w/TiN Coating	32740-CT1	0.1142	2.9	-
KA433M-3.0 Strip Blade w/TiN Coating	30126-CT1	0.1181	3.0	-
KA433M-3.1 Strip Blade w/TiN Coating	30422-CT1	0.1221	3.1	-
KA433M-3.2 Strip Blade w/TiN Coating	33382-CT1	0.1260	3.2	-
KA433M-3.3 Strip Blade w/TiN Coating	35479-CT1	0.1299	3.3	-
KA433M-3.4 Strip Blade w/TiN Coating	31854-CT1	0.1339	3.4	-
KA433M-3.5 Strip Blade w/TiN Coating	30032-CT1	0.1378	3.5	-
KA433M-3.6 Strip Blade w/TiN Coating	35480-CT1	0.1417	3.6	-
KA433M-3.7 Strip Blade w/TiN Coating	35462-CT1	0.1457	3.7	-
KA433M-3.8 Strip Blade w/TiN Coating	35481-CT1	0.1496	3.8	-
KA433M-3.9 Strip Blade w/TiN Coating	35482-CT1	0.1535	3.9	-
KA433M-4.0 Strip Blade w/TiN Coating	33264-CT1	0.1575	4.0	-

# CrimpCenter 36/60/70 Series Blades

Used in the following *Schleuniger* machines:

CrimpCenter 36 | CrimpCenter 60 Series | CrimpCenter 70 Series



## CrimpCenter 36/60/70 Full Radius Blades

Mechtrix Description	Mechtrix Part Number	Blade Form Diameter		OEM Part Number
		(in)	(mm)	
KA433-0.3D Strip Blade w/TiN Coating	36423-CT1	0.0118	0.3	-
KA433-0.4D Strip Blade w/TiN Coating	36424-CT1	0.0158	0.4	-
KA433-0.5D Strip Blade w/TiN Coating	30134-CT1	0.0197	0.5	-
KA433-0.6D Strip Blade w/TiN Coating	29624-CT1	0.0236	0.6	-
KA433-0.7D Strip Blade w/TiN Coating	29625-CT1	0.0276	0.7	-
KA433-0.8D Strip Blade w/TiN Coating	30135-CT1	0.0315	0.8	-
KA433-0.9D Strip Blade w/TiN Coating	35846-CT1	0.0354	0.9	-
KA433-1.0D Strip Blade w/TiN Coating	29633-CT1	0.0394	1.0	-
KA433-1.1D Strip Blade w/TiN Coating	35077-CT1	0.0433	1.1	-
KA433-1.2D Strip Blade w/TiN Coating	30136-CT1	0.0472	1.2	-
KA433-1.3D Strip Blade w/TiN Coating	37414-CT1	0.0512	1.3	-
KA433-1.4D Strip Blade w/TiN Coating	30137-CT1	0.0551	1.4	-
KA433-1.5D Strip Blade w/TiN Coating	33939-CT1	0.0591	1.5	-
KA433-1.6D Strip Blade w/TiN Coating	44286-CT1	0.0630	1.6	-
KA433-1.7D Strip Blade w/TiN Coating	32904-CT1	0.0669	1.7	-
KA433-1.8D Strip Blade w/TiN Coating	37133-CT1	0.0709	1.8	-
KA433-1.9D Strip Blade w/TiN Coating	38349-CT1	0.0748	1.9	-
KA433-2.0D Strip Blade w/TiN Coating	33940-CT1	0.0787	2.0	-
KA433-2.1D Strip Blade w/TiN Coating	33267-CT1	0.0827	2.1	-
KA433-2.2D Strip Blade w/TiN Coating	33268-CT1	0.0866	2.2	-
KA433-2.3D Strip Blade w/TiN Coating	33269-CT1	0.0906	2.3	-
KA433-2.4D Strip Blade w/TiN Coating	38350-CT1	0.0945	2.4	-
KA433-2.5D Strip Blade w/TiN Coating	38351-CT1	0.0984	2.5	-
KA433-2.6D Strip Blade w/TiN Coating	38352-CT1	0.1024	2.6	-
KA433-2.7D Strip Blade w/TiN Coating	38353-CT1	0.1063	2.7	-
KA433-2.8D Strip Blade w/TiN Coating	30766-CT1	0.1102	2.8	-
KA433-2.9D Strip Blade w/TiN Coating	32466-CT1	0.1142	2.9	-
KA433-3.0D Strip Blade w/TiN Coating	38354-CT1	0.1181	3.0	-
KA433-3.1D Strip Blade w/TiN Coating	36482-CT1	0.1221	3.1	-
KA433-3.2D Strip Blade w/TiN Coating	38355-CT1	0.1260	3.2	-
KA433-3.3D Strip Blade w/TiN Coating	36100-CT1	0.1299	3.3	-
KA433-3.4D Strip Blade w/TiN Coating	37073-CT1	0.1339	3.4	-
KA433-3.5D Strip Blade w/TiN Coating	37033-CT1	0.1378	3.5	-
KA433-3.6D Strip Blade w/TiN Coating	37034-CT1	0.1417	3.6	-
KA433-3.7D Strip Blade w/TiN Coating	37074-CT1	0.1457	3.7	-
KA433-3.8D Strip Blade w/TiN Coating	38356-CT1	0.1496	3.8	-
KA433-3.9D Strip Blade w/TiN Coating	38357-CT1	0.1535	3.9	-
KA433-4.0D Strip Blade w/TiN Coating	38358-CT1	0.1575	4.0	-

# CrimpCenter 36/60/70 Series Blades

Used in the following *Schleuniger* machines:

CrimpCenter 36 | CrimpCenter 60 Series | CrimpCenter 70 Series

---



## CrimpCenter 36/60/70 Series Cyclonic-V® Blades

Patented **Mechtrix Cyclonic-V® Stripping Blades** are another innovative solution available for stripping the most difficult wire insulations in these machines. This stripping blade design offers more precise control of the depth of the cut into the insulation and improved centering of the wire in the stripping blades.

[Please Contact Mechtrix for Assistance](#)