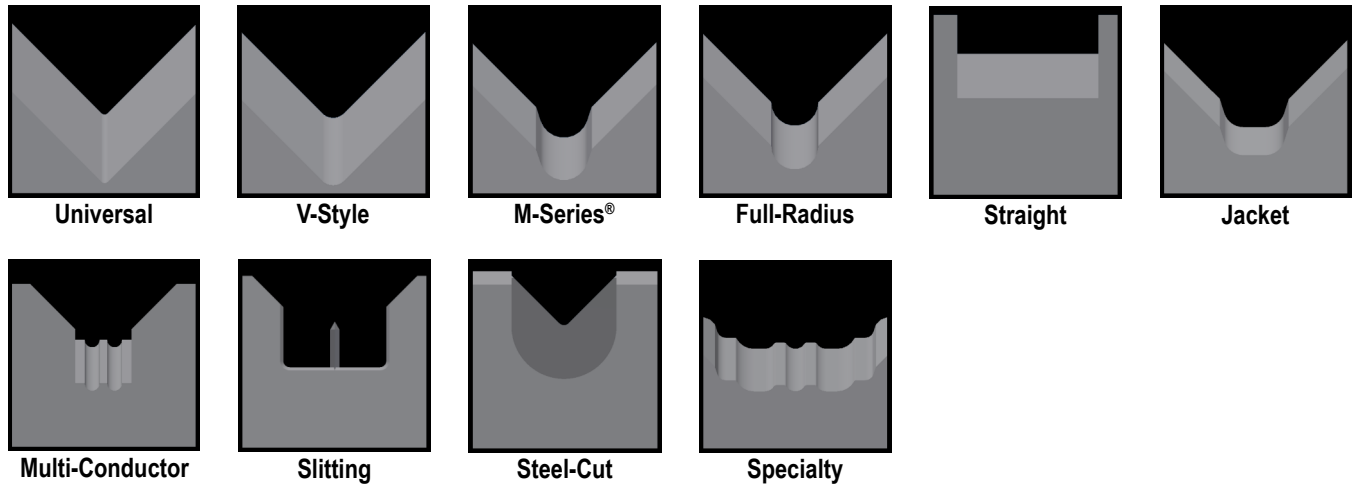


Kappa 230 Series Blades

Used in the following Komax machines:

Kappa 230, 235, 321, 322, 330, 331 & 340

Available Kappa 230 Blade Form Geometries Include:

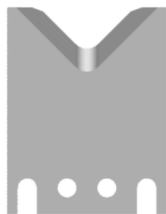


Kappa 230 Universal Blades



Mechtrix Description	Mechtrix Part Number	Blade Form Diameter		OEM Part Number
		(in)	(mm)	
K230UV Universal Strip Blade (Carbide)	20210-01	-	-	0056611
				0056612
K230UV Universal Strip Blade (Tool Steel)	20210-02	-	-	0305028
				0305868

Kappa 230 Radius V-Blades



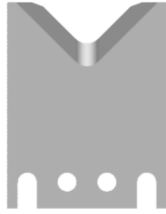
Mechtrix Description	Mechtrix Part Number	Blade Form Diameter		OEM Part Number
		(in)	(mm)	
K230-R0.5 Strip Blade (Carbide)	28211-01	0.03937	1.00	0311458
				0311459
K230-R0.5 Strip Blade (Tool Steel)	28211-02	0.03937	1.00	-
K230-R1 Strip Blade (Carbide)	34656-01	0.07874	2.00	0311456
				0311457
K230-R1 Strip Blade (Tool Steel)	34656-02	0.07874	2.00	-
K230-R1.5 Strip Blade (Carbide)	34767-01	0.11811	3.00	0311454
				0311455
K230-R1.5 Strip Blade (Tool Steel)	34767-02	0.11811	3.00	-
K230-R2 Strip Blade (Carbide)	18762-01	0.15748	4.00	0044128
				0044211
K230-R2 Strip Blade (Tool Steel)	18762-02	0.15748	4.00	-
K230-R2.5 Strip Blade (Carbide)	18763-01	0.19685	5.00	0044127
				0044212
K230-R2.5 Strip Blade (Tool Steel)	18763-02	0.19685	5.00	-
K230-R3 Strip Blade (Carbide)	18764-01	0.23622	6.00	0043912
				0044213
K230-R3 Strip Blade (Tool Steel)	18764-02	0.23622	6.00	-
K230-R4 Strip Blade (Carbide)	18765-01	0.31496	8.00	0043913
				0044214
K230-R4 Strip Blade (Tool Steel)	18765-02	0.31496	8.00	-

Continued on Next Page

Kappa 230 Series Blades

Used in the following Komax machines:

Kappa 230, 235, 321, 322, 330, 331 & 340



Kappa 230 Radius V-Blades (continued)

Mechtrix Description	Mechtrix Part Number	Blade Form (in)	Diameter (mm)	OEM Part Number
K230-R5 Strip Blade (Carbide)	18766-01	0.39370	10.00	0043914 0044215
K230-R5 Strip Blade (Tool Steel)	18766-02	0.39370	10.00	-
K230-R6 Strip Blade (Carbide)	18767-01	0.47244	12.00	0043915 0044216
K230-R6 Strip Blade (Tool Steel)	18767-02	0.47244	12.00	-



Kappa 230 M-Series® Blades

Mechtrix Description	Mechtrix Part Number	Blade Form (in)	Diameter (mm)	OEM Part Number
K230M-0.3 Strip Blade	38398	0.0118	0.3	-
K230M-0.4 Strip Blade	26767	0.0158	0.4	-
K230M-0.5 Strip Blade	38399	0.0197	0.5	-
K230M-0.6 Strip Blade	37493	0.0236	0.6	-
K230M-0.7 Strip Blade	25416	0.0276	0.7	-
K230M-0.8 Strip Blade	33453	0.0315	0.8	-
K230M-0.9 Strip Blade	34306	0.0354	0.9	-
K230M-1.0 Strip Blade	28984	0.0394	1.0	-
K230M-1.1 Strip Blade	38400	0.0433	1.1	-
K230M-1.2 Strip Blade	32611	0.0472	1.2	-
K230M-1.3 Strip Blade	28820	0.0512	1.3	-
K230M-1.4 Strip Blade	33454	0.0551	1.4	-
K230M-1.5 Strip Blade	28985	0.0591	1.5	-
K230M-1.6 Strip Blade	30623	0.0630	1.6	-
K230M-1.7 Strip Blade	27217	0.0669	1.7	-
K230M-1.8 Strip Blade	25981	0.0709	1.8	-
K230M-1.9 Strip Blade	31616	0.0748	1.9	-
K230M-2.0 Strip Blade	34506	0.0787	2.0	-
K230M-2.1 Strip Blade	23837	0.0827	2.1	-
K230M-2.2 Strip Blade	28343	0.0866	2.2	-
K230M-2.3 Strip Blade	28971	0.0906	2.3	-
K230M-2.4 Strip Blade	28666	0.0945	2.4	-
K230M-2.5 Strip Blade	34507	0.0984	2.5	-
K230M-2.6 Strip Blade	30279	0.1024	2.6	-
K230M-2.7 Strip Blade	23838	0.1063	2.7	-
K230M-2.8 Strip Blade	27094	0.1102	2.8	-
K230M-2.9 Strip Blade	25393	0.1142	2.9	-
K230M-3.0 Strip Blade	27689	0.1181	3.0	-
K230M-3.1 Strip Blade	28042	0.1221	3.1	-
K230M-3.2 Strip Blade	28178	0.1260	3.2	-
K230M-3.3 Strip Blade	24010	0.1299	3.3	-
K230M-3.4 Strip Blade	31341	0.1339	3.4	-
K230M-3.5 Strip Blade	20951	0.1378	3.5	-
K230M-3.6 Strip Blade	23839	0.1417	3.6	-
K230M-3.7 Strip Blade	29260	0.1457	3.7	-

Continued on Next Page

Kappa 230 Series Blades

Used in the following Komax machines:

Kappa 230, 235, 321, 322, 330, 331 & 340



Kappa 230 M-Series® Blades (continued)

Mechtrix Description	Mechtrix Part Number	Blade Form (in)	Diameter (mm)	OEM Part Number
K230M-3.8 Strip Blade	30280	0.1496	3.8	-
K230M-3.9 Strip Blade	23059	0.1535	3.9	-
K230M-4.0 Strip Blade	28937	0.1575	4.0	-
K230M-4.1 Strip Blade	30553	0.1614	4.1	-
K230M-4.2 Strip Blade	26777	0.1654	4.2	-
K230M-4.3 Strip Blade	30690	0.1693	4.3	-
K230M-4.4 Strip Blade	25319	0.1732	4.4	-
K230M-4.5 Strip Blade	26458	0.1772	4.5	-
K230M-4.6 Strip Blade	29011	0.1811	4.6	-
K230M-4.7 Strip Blade	27827	0.1850	4.7	-
K230M-4.8 Strip Blade	28938	0.1890	4.8	-
K230M-4.9 Strip Blade	23840	0.1929	4.9	-
K230M-5.0 Strip Blade	29231	0.1969	5.0	-
K230M-5.1 Strip Blade	26148	0.2008	5.1	-
K230M-5.2 Strip Blade	23648	0.2047	5.2	-
K230M-5.3 Strip Blade	30278	0.2087	5.3	-
K230M-5.4 Strip Blade	28939	0.2126	5.4	-
K230M-5.5 Strip Blade	31749	0.2165	5.5	-
K230M-5.6 Strip Blade	27361	0.2205	5.6	-
K230M-5.7 Strip Blade	24837	0.2244	5.7	-
K230M-5.8 Strip Blade	30277	0.2284	5.8	-
K230M-5.9 Strip Blade	30715	0.2323	5.9	-
K230M-6.0 Strip Blade	21722	0.2362	6.0	-
K230M-6.1 Strip Blade	30116	0.2402	6.1	-
K230M-6.2 Strip Blade	28732	0.2441	6.2	-
K230M-6.3 Strip Blade	25471	0.2480	6.3	-
K230M-6.4 Strip Blade	29928	0.2520	6.4	-
K230M-6.5 Strip Blade	34667	0.2559	6.5	-
K230M-6.6 Strip Blade	27978	0.2598	6.6	-
K230M-6.7 Strip Blade	35710	0.2638	6.7	-
K230M-6.8 Strip Blade	28358	0.2677	6.8	-
K230M-6.9 Strip Blade	23384	0.2717	6.9	-
K230M-7.0 Strip Blade	29232	0.2756	7.0	-
K230M-7.1 Strip Blade	33438	0.2795	7.1	-
K230M-7.2 Strip Blade	22093	0.2835	7.2	-
K230M-7.3 Strip Blade	26145	0.2874	7.3	-
K230M-7.4 Strip Blade	36918	0.2913	7.4	-
K230M-7.5 Strip Blade	26086	0.2953	7.5	-
K230M-7.6 Strip Blade	28477	0.2992	7.6	-
K230M-7.7 Strip Blade	27216	0.3032	7.7	-
K230M-7.8 Strip Blade	34996	0.3071	7.8	-
K230M-7.9 Strip Blade	34813	0.3110	7.9	-
K230M-8.0 Strip Blade	22091	0.3150	8.0	-
K230M-8.1 Strip Blade	22092	0.3189	8.1	-
K230M-8.2 Strip Blade	38028	0.3228	8.2	-
K230M-8.3 Strip Blade	38401	0.3268	8.3	-
K230M-8.4 Strip Blade	27979	0.3307	8.4	-

Continued on Next Page

Kappa 230 Series Blades

Used in the following Komax machines:

Kappa 230, 235, 321, 322, 330, 331 & 340



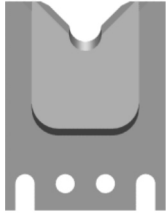
Kappa 230 M-Series® Blades (continued)

Mechtrix Description	Mechtrix	Blade Form Diameter		OEM
	Part Number	(in)	(mm)	Part Number
K230M-8.5 Strip Blade	37416	0.3346	8.5	-
K230M-8.6 Strip Blade	34489	0.3386	8.6	-
K230M-8.7 Strip Blade	26245	0.3425	8.7	-
K230M-8.8 Strip Blade	31267	0.3465	8.8	-
K230M-8.9 Strip Blade	27215	0.3504	8.9	-
K230M-9.0 Strip Blade	29135	0.3543	9.0	-
K230M-9.1 Strip Blade	38402	0.3583	9.1	-
K230M-9.2 Strip Blade	22090	0.3622	9.2	-
K230M-9.3 Strip Blade	36682	0.3661	9.3	-
K230M-9.4 Strip Blade	26246	0.3701	9.4	-
K230M-9.5 Strip Blade	30100	0.3740	9.5	-
K230M-9.6 Strip Blade	32262	0.3780	9.6	-
K230M-9.7 Strip Blade	36946	0.3819	9.7	-
K230M-9.8 Strip Blade	28808	0.3858	9.8	-
K230M-9.9 Strip Blade	38403	0.3898	9.9	-
K230M-10.0 Strip Blade	27159	0.3937	10.0	-
K230M-10.1 Strip Blade	38404	0.3976	10.1	-
K230M-10.2 Strip Blade	38405	0.4016	10.2	-
K230M-10.3 Strip Blade	38406	0.4055	10.3	-
K230M-10.4 Strip Blade	30716	0.4094	10.4	-
K230M-10.5 Strip Blade	38407	0.4134	10.5	-
K230M-10.6 Strip Blade	38408	0.4173	10.6	-
K230M-10.7 Strip Blade	38409	0.4213	10.7	-
K230M-10.8 Strip Blade	35606	0.4252	10.8	-
K230M-10.9 Strip Blade	38410	0.4291	10.9	-
K230M-11.0 Strip Blade	36945	0.4331	11.0	-
K230M-11.1 Strip Blade	38411	0.4370	11.1	-
K230M-11.2 Strip Blade	26778	0.4409	11.2	-
K230M-11.3 Strip Blade	38412	0.4449	11.3	-
K230M-11.4 Strip Blade	38413	0.4488	11.4	-
K230M-11.5 Strip Blade	26865	0.4528	11.5	-
K230M-11.6 Strip Blade	38414	0.4567	11.6	-
K230M-11.7 Strip Blade	35966	0.4606	11.7	-
K230M-11.8 Strip Blade	38415	0.4646	11.8	-
K230M-11.9 Strip Blade	38416	0.4685	11.9	-
K230M-12.0 Strip Blade	38417	0.4724	12.0	-
K230M-12.1 Strip Blade	38418	0.4764	12.1	-
K230M-12.2 Strip Blade	38419	0.4803	12.2	-
K230M-12.3 Strip Blade	38420	0.4843	12.3	-
K230M-12.4 Strip Blade	38421	0.4882	12.4	-
K230M-12.5 Strip Blade	38422	0.4921	12.5	-
K230M-12.6 Strip Blade	38423	0.4961	12.6	-
K230M-12.7 Strip Blade	25472	0.5000	12.7	-
K230M-12.8 Strip Blade	38424	0.5039	12.8	-
K230M-12.9 Strip Blade	38425	0.5079	12.9	-
K230M-13.0 Strip Blade	38426	0.5118	13.0	-

Kappa 230 Series Blades

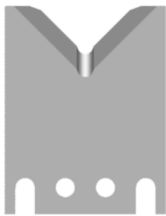
Used in the following Komax machines:

Kappa 230, 235, 321, 322, 330, 331 & 340



Kappa 230 Full Radius Blades w/Pocket

Mechtrix Description	Mechtrix Part Number	Blade Form (in)	Diameter (mm)	OEM Part Number
K230-R0.5D Strip Blade w/Pocket	34804-02	0.03937	1.00	0307823 0307837
K230-R1.0D Strip Blade w/Pocket	34805-02	0.07874	2.00	0307824 0307838
K230-R1.5D Strip Blade w/Pocket	34806-02	0.11811	3.00	0307825 0307839
K230-R2.0D Strip Blade w/Pocket	34695-02	0.15748	4.00	0307826 0307840
K230-R2.5D Strip Blade w/Pocket	34807-02	0.19685	5.00	0307827 0307841
K230-R3.0D Strip Blade w/Pocket	31885-02	0.23622	6.00	0307828 0307842
K230-R3.5D Strip Blade w/Pocket	31886-02	0.27559	7.00	0307829 0307843
K230-R4.0D Strip Blade w/Pocket	33518-02	0.31496	8.00	0307830 0307844
K230-R4.5D Strip Blade w/Pocket	34808-02	0.35433	9.00	0307831 0307845
K230-R5.0D Strip Blade w/Pocket	34809-02	0.39370	10.00	0307832 0307846
K230-R5.5D Strip Blade w/Pocket	34810-02	0.43307	11.00	0307833 0307847
K230-R6.0D Strip Blade w/Pocket	34811-02	0.47244	12.00	0307834 0307848
K230-R6.5D Strip Blade w/Pocket	34812-02	0.51181	13.00	0307835 0307850



Kappa 230 Full Radius Blades

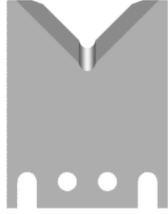
Mechtrix Description	Mechtrix Part Number	Blade Form (in)	Diameter (mm)	OEM Part Number
K230-0.3D Strip Blade	38427	0.0118	0.3	-
K230-0.4D Strip Blade	38428	0.0158	0.4	-
K230-0.5D Strip Blade	38429	0.0197	0.5	-
K230-0.6D Strip Blade	36159	0.0236	0.6	-
K230-0.7D Strip Blade	38430	0.0276	0.7	-
K230-0.8D Strip Blade	38431	0.0315	0.8	-
K230-0.9D Strip Blade	36477	0.0354	0.9	-
K230-1.0D Strip Blade	38432	0.0394	1.0	-
K230-1.1D Strip Blade	36478	0.0433	1.1	-
K230-1.2D Strip Blade	38433	0.0472	1.2	-
K230-1.3D Strip Blade	36479	0.0512	1.3	-
K230-1.4D Strip Blade	38434	0.0551	1.4	-
K230-1.5D Strip Blade	38435	0.0591	1.5	-
K230-1.6D Strip Blade	36480	0.0630	1.6	-
K230-1.7D Strip Blade	38436	0.0669	1.7	-
K230-1.8D Strip Blade	38437	0.0709	1.8	-
K230-1.9D Strip Blade	38438	0.0748	1.9	-

Continued on Next Page

Kappa 230 Series Blades

Used in the following Komax machines:

Kappa 230, 235, 321, 322, 330, 331 & 340



Kappa 230 Full Radius Blades (continued)

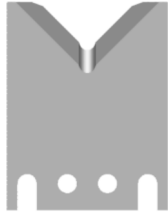
Mechtrix Description	Mechtrix Part Number	Blade Form (in)	Diameter (mm)	OEM Part Number
K230-2.0D Strip Blade	38439	0.0787	2.0	-
K230-2.1D Strip Blade	38440	0.0827	2.1	-
K230-2.2D Strip Blade	35881	0.0866	2.2	-
K230-2.3D Strip Blade	36245	0.0906	2.3	-
K230-2.4D Strip Blade	38441	0.0945	2.4	-
K230-2.5D Strip Blade	38442	0.0984	2.5	-
K230-2.6D Strip Blade	38443	0.1024	2.6	-
K230-2.7D Strip Blade	23806	0.1063	2.7	-
K230-2.8D Strip Blade	38444	0.1102	2.8	-
K230-2.9D Strip Blade	23884	0.1142	2.9	-
K230-3.0D Strip Blade	35882	0.1181	3.0	-
K230-3.1D Strip Blade	38445	0.1221	3.1	-
K230-3.2D Strip Blade	37763	0.1260	3.2	-
K230-3.3D Strip Blade	38446	0.1299	3.3	-
K230-3.4D Strip Blade	29504	0.1339	3.4	-
K230-3.5D Strip Blade	36161	0.1378	3.5	-
K230-3.6D Strip Blade	38447	0.1417	3.6	-
K230-3.7D Strip Blade	38448	0.1457	3.7	-
K230-3.8D Strip Blade	37450	0.1496	3.8	-
K230-3.9D Strip Blade	38449	0.1535	3.9	-
K230-4.0D Strip Blade	36162	0.1575	4.0	-
K230-4.1D Strip Blade	20940	0.1614	4.1	-
K230-4.2D Strip Blade	20939	0.1654	4.2	-
K230-4.3D Strip Blade	35883	0.1693	4.3	-
K230-4.4D Strip Blade	38450	0.1732	4.4	-
K230-4.5D Strip Blade	37764	0.1772	4.5	-
K230-4.6D Strip Blade	38451	0.1811	4.6	-
K230-4.7D Strip Blade	38452	0.1850	4.7	-
K230-4.8D Strip Blade	38453	0.1890	4.8	-
K230-4.9D Strip Blade	23737	0.1929	4.9	-
K230-5.0D Strip Blade	38454	0.1969	5.0	-
K230-5.1D Strip Blade	38455	0.2008	5.1	-
K230-5.2D Strip Blade	38456	0.2047	5.2	-
K230-5.3D Strip Blade	36399	0.2087	5.3	-
K230-5.4D Strip Blade	38457	0.2126	5.4	-
K230-5.5D Strip Blade	38458	0.2165	5.5	-
K230-5.6D Strip Blade	20928	0.2205	5.6	-
K230-5.7D Strip Blade	38459	0.2244	5.7	-
K230-5.8D Strip Blade	38460	0.2284	5.8	-
K230-5.9D Strip Blade	38461	0.2323	5.9	-
K230-6.0D Strip Blade	37894	0.2362	6.0	-
K230-6.1D Strip Blade	38462	0.2402	6.1	-
K230-6.2D Strip Blade	38463	0.2441	6.2	-
K230-6.3D Strip Blade	38464	0.2480	6.3	-
K230-6.4D Strip Blade	38465	0.2520	6.4	-
K230-6.5D Strip Blade	38466	0.2559	6.5	-
K230-6.6D Strip Blade	38467	0.2598	6.6	-
K230-6.7D Strip Blade	35884	0.2638	6.7	-

Continued on Next Page

Kappa 230 Series Blades

Used in the following Komax machines:

Kappa 230, 235, 321, 322, 330, 331 & 340



Kappa 230 Full Radius Blades (continued)

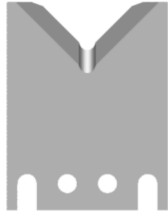
Mechtrix Description	Mechtrix Part Number	Blade Form (in)	Diameter (mm)	OEM Part Number
K230-6.8D Strip Blade	38468	0.2677	6.8	-
K230-6.9D Strip Blade	38469	0.2717	6.9	-
K230-7.0D Strip Blade	35885	0.2756	7.0	-
K230-7.1D Strip Blade	38470	0.2795	7.1	-
K230-7.2D Strip Blade	38471	0.2835	7.2	-
K230-7.3D Strip Blade	38472	0.2874	7.3	-
K230-7.4D Strip Blade	38473	0.2913	7.4	-
K230-7.5D Strip Blade	38474	0.2953	7.5	-
K230-7.6D Strip Blade	38475	0.2992	7.6	-
K230-7.7D Strip Blade	38476	0.3032	7.7	-
K230-7.8D Strip Blade	38477	0.3071	7.8	-
K230-7.9D Strip Blade	38478	0.3110	7.9	-
K230-8.0D Strip Blade	35886	0.3150	8.0	-
K230-8.1D Strip Blade	38479	0.3189	8.1	-
K230-8.2D Strip Blade	38480	0.3228	8.2	-
K230-8.3D Strip Blade	38481	0.3268	8.3	-
K230-8.4D Strip Blade	38482	0.3307	8.4	-
K230-8.5D Strip Blade	38483	0.3346	8.5	-
K230-8.6D Strip Blade	38484	0.3386	8.6	-
K230-8.7D Strip Blade	38485	0.3425	8.7	-
K230-8.8D Strip Blade	38486	0.3465	8.8	-
K230-8.9D Strip Blade	38487	0.3504	8.9	-
K230-9.0D Strip Blade	37368	0.3543	9.0	-
K230-9.1D Strip Blade	38488	0.3583	9.1	-
K230-9.2D Strip Blade	38489	0.3622	9.2	-
K230-9.3D Strip Blade	38490	0.3661	9.3	-
K230-9.4D Strip Blade	38491	0.3701	9.4	-
K230-9.5D Strip Blade	38492	0.3740	9.5	-
K230-9.6D Strip Blade	35887	0.3780	9.6	-
K230-9.7D Strip Blade	38493	0.3819	9.7	-
K230-9.8D Strip Blade	38494	0.3858	9.8	-
K230-9.9D Strip Blade	38495	0.3898	9.9	-
K230-10.0D Strip Blade	38496	0.3937	10.0	-
K230-10.1D Strip Blade	38497	0.3976	10.1	-
K230-10.2D Strip Blade	38498	0.4016	10.2	-
K230-10.3D Strip Blade	38499	0.4055	10.3	-
K230-10.4D Strip Blade	38500	0.4094	10.4	-
K230-10.5D Strip Blade	38501	0.4134	10.5	-
K230-10.6D Strip Blade	38502	0.4173	10.6	-
K230-10.7D Strip Blade	35888	0.4213	10.7	-
K230-10.8D Strip Blade	38503	0.4252	10.8	-
K230-10.9D Strip Blade	38504	0.4291	10.9	-
K230-11.0D Strip Blade	38505	0.4331	11.0	-
K230-11.1D Strip Blade	38506	0.4370	11.1	-
K230-11.2D Strip Blade	38507	0.4409	11.2	-
K230-11.3D Strip Blade	38508	0.4449	11.3	-

Continued on Next Page

Kappa 230 Series Blades

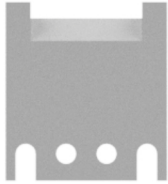
Used in the following Komax machines:

Kappa 230, 235, 321, 322, 330, 331 & 340



Kappa 230 Full Radius Blades (continued)

Mechtrix Description	Mechtrix Part Number	Blade Form Diameter (in)	Diameter (mm)	OEM Part Number
K230-11.4D Strip Blade	38509	0.4488	11.4	-
K230-11.5D Strip Blade	38510	0.4528	11.5	-
K230-11.6D Strip Blade	38511	0.4567	11.6	-
K230-11.7D Strip Blade	38512	0.4606	11.7	-
K230-11.8D Strip Blade	38513	0.4646	11.8	-
K230-11.9D Strip Blade	38514	0.4685	11.9	-
K230-12.0D Strip Blade	38515	0.4724	12.0	-
K230-12.1D Strip Blade	38516	0.4764	12.1	-
K230-12.2D Strip Blade	38517	0.4803	12.2	-
K230-12.3D Strip Blade	38518	0.4843	12.3	-
K230-12.4D Strip Blade	38519	0.4882	12.4	-
K230-12.5D Strip Blade	38520	0.4921	12.5	-
K230-12.6D Strip Blade	38521	0.4961	12.6	-
K230-12.7D Strip Blade	38522	0.5000	12.7	-
K230-12.8D Strip Blade	38523	0.5039	12.8	-
K230-12.9D Strip Blade	38524	0.5079	12.9	-
K230-13.0D Strip Blade	38525	0.5118	13.0	-



Kappa 230 Straight Blades

Mechtrix Description	Mechtrix Part Number	Blade Form Diameter (in)	Diameter (mm)	OEM Part Number
K230SC Straight Strip Blade	23665	-	-	0044129



Kappa 230 Jacket Blades

Jacket Blades are available for the Kappa 230 machines.

[Please Contact Mechtrix for Assistance](#)



Kappa 230 Multi-Conductor Blades

Multi-Conductor Blades are available for the Kappa 230 machines.

[Please Contact Mechtrix for Assistance](#)

Kappa 230 Series Blades

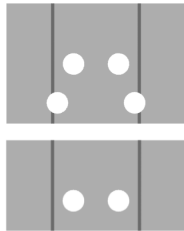
Used in the following *Komax* machines:

Kappa 230, 235, 321, 322, 330, 331 & 340



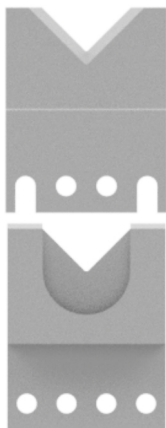
Kappa 330 Slitting Blades

Mechtrix Description	Mechtrix Part Number	Blade Form (in)	Diameter (mm)	OEM Part Number
K330 Slitting Blade (D2)	33666	-	-	0052186



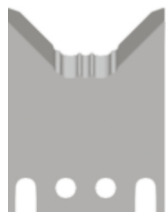
Kappa 230 and 235 Retrofit Kits

Mechtrix Description	Mechtrix Part Number	Blade Form (in)	Diameter (mm)	OEM Part Number
Kappa 230 Retro-fit Kit (Allows Komax 34 and Kappa 210, 220, 225 Blades to run in the 230)	19881-500	-	-	0044121
Kappa 235 Retro-fit Kit (Allows Komax 34 and Kappa 210, 220, 225 Blades to run in the 235)	27352-500	-	-	-



Kappa 230 Steel-Cut Blades

Mechtrix Description	Mechtrix Part Number	Blade Form (in)	Diameter (mm)	OEM Part Number
K230 Steel-Cut V-Blade	35565	-	-	-
K230 Steel-Cut Shear Blade	35564	-	-	-



Kappa 230 Specialty Blades

Specialty Blades are available for the Kappa 230 machines.

Please Contact Mechtrix for Assistance

Kappa 321 Series Blades

Used in the following Komax machines:

Kappa 321, 322, 330DH & 340DH



Kappa 321 Flat Blades for Processing Multiple Inner Conductors

Mechtrix Description	Mechtrix Part Number	Blade Form (in)	Diameter (mm)	OEM Part Number
K321SS-6W Flat Strip Blade	33958	-	6mm	0307015 0308761
K321SS-12W Flat Strip Blade	35025	-	12mm	0307014 0311658
K321SS-12W Flat Strip Blade w/Step (12W)	35026	-	12mm	0312702 0318031
K34SC Flat Strip Blade	16565	-	12mm	0063906 0063942
K230SC Flat Strip Blade	23665	-	20.5mm	0056618 0056619



Kappa 321 Blades for Processing Multiple Inner Conductors

Mechtrix Description	Mechtrix Part Number	Blade Form (in)	Diameter (mm)	OEM Part Number
K321-2UV-1.55P-3.10G Strip Blade (2 x 0.35mm ²)	35009	1.55	3.10	0307016 0308762
K321-2UV-2.05P-4.10G Strip Blade (2 x 0.5mm ²)	35010	2.05	4.10	0307017 0308763
K321-2UV-2.35P-4.70G Strip Blade (2 x 0.75mm ²)	35011	2.35	4.70	0307018 0308764
K321-2UV-2.50P-5.00G Strip Blade (2 x 1.00mm ²)	35012	2.50	5.00	0307019 0308765
K321-2UV-3.03P-6.06G Strip Blade (2 x 1.50mm ²)	35013	3.03	6.06	0307020 0308766
K321-2UV-3.80P-7.60G Strip Blade (2 x 2.50mm ²)	35014	3.80	7.60	0311349 0333689
K321-3UV-1.55P-4.65G Strip Blade (3 x 0.35mm ²)	35015	1.55	4.65	0307021 0308767
K321-3UV-2.05P-6.15G Strip Blade (3 x 0.50mm ²)	35016	2.05	6.05	0307022 0308768
K321-3UV-2.35P-7.05G Strip Blade (3 x 0.75mm ²)	35017	2.35	7.05	0307023 0308769
K321-3UV-2.50P-7.50G Strip Blade (3 x 1.00mm ²)	35018	2.50	7.50	0307024 0308770
K321-3UV-3.03P-9.09G Strip Blade (3 x 1.50mm ²)	35019	3.03	9.09	0307025 0308771
K321-3UV-3.80P-11.40G Strip Blade (3 x 2.50mm ²)	35020	3.80	11.40	0321239 0331108
K321-4UV-2.05P-8.20G Strip Blade (4 x 0.50mm ²)	35021	2.05	8.20	0314280 0314281
K321-4UV-2.35P-9.40G Strip Blade (4 x 0.75mm ²)	35022	2.35	9.40	0307167 0311116
K321-4UV-2.50P-10.00G Strip Blade (4 x 1.00mm ²)	35023	2.50	10.00	0309902 0311117
K321-4UV-3.03P-12.12G Strip Blade (4 x 1.50mm ²)	35024	3.03	12.12	0334055 0334056