

# ShinMaywa TR111 Series Blades

Used in the following *ShinMaywa* machines:

TR111 | TR201 | TR202 | TRD111 | TRD301 | TRD302

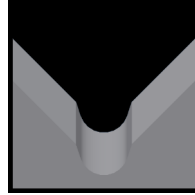
## Available TR111 Blade Form Geometries Include:



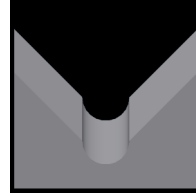
Universal



V-Style



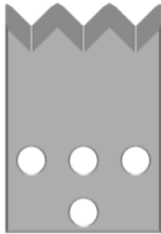
M-Series®



Full-Radius

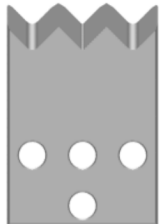


Slitting



## TR111/TR201/TR202 and TRD111/TRD301/TRD302 Universal Blades

Mechtrix Description	Mechtrix Part Number	Blade Form Diameter		OEM Part Number
		(in)	(mm)	
SM3 Universal Stripping Blade (30°)	21031-03	-	-	H92789-A
				P16307-A
				P35966-A
SM3 Universal Stripping Blade w/TiN Coating (30°)	21031-03-CT1	-	-	P16307-B P35966-B
SM3 Universal Stripping Blade-Carbide (30°)	21031-01	-	-	P17347-A
SM3 Universal Stripping Blade (20°)	32085-03	-	-	N71019-B
				N71264-A P36152-A
SM3 Universal Stripping Blade w/TiN Coating (20°)	32085-03-CT1	-	-	N71264-B P36152-B
SM3 Universal Stripping Blade (15°)	32041-03	-	-	N71019-A



## TR111/TR201/TR202 and TRD111/TRD301/TRD302 V-Style Blades (20°)

Mechtrix Description	Mechtrix Part Number	Blade Form Diameter		OEM Part Number
		(in)	(mm)	
SM3V-0.2 Stripping Blade (20°)	32118-03	0.00787	0.20	N70912-A
SM3V-0.3 Stripping Blade (20°)	32119-03	0.01181	0.30	N70912-B
SM3V-0.4 Stripping Blade (20°)	32120-03	0.01575	0.40	N70912-C
SM3V-0.5 Stripping Blade (20°)	32121-03	0.01969	0.50	N70912-D
SM3V-0.6 Stripping Blade (20°)	32122-03	0.02362	0.60	N70912-E
SM3V-1.7 Stripping Blade (20°)	32123-03	0.06693	1.70	N71520-A
SM3V-1.8 Stripping Blade (20°)	32124-03	0.07087	1.80	N71520-B

Additional V-Style Blades are available in 0.1mm increments in the following sizes:

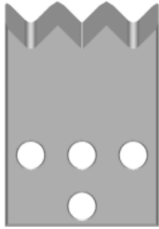
SM3V-0.3 thru SM3V-3.0

# ShinMaywa TR111 Series Blades



Used in the following *ShinMaywa* machines:

TR111 | TR201 | TR202 | TRD111 | TRD301 | TRD302



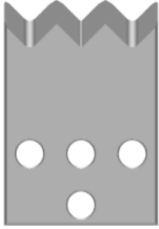
## TR111/TR201/TR202 and TRD111/TRD301/TRD302 V-Style Blades (30°)

Mechtrix Description	Mechtrix Part Number	Blade Form (in)	Diameter (mm)	OEM Part Number
SM3V-0.7 Stripping Blade (30°)	32045-03	0.02756	0.70	MS070CA NC0224-A
SM3V-0.9 Stripping Blade (30°)	32050-03	0.03543	0.90	L49700-A MS090CA NC0224-B
SM3V-1.0 Stripping Blade (30°)	32102-03	0.03937	1.00	- L49700-B
SM3V-1.1 Stripping Blade (30°)	32051-03	0.04331	1.10	MS110CA NC0224-C
SM3V-1.2 Stripping Blade (30°)	32103-03	0.04724	1.20	- L49702-C
SM3V-1.3 Stripping Blade (30°)	32052-03	0.05118	1.30	MS130CA NC0224-D
SM3V-1.4 Stripping Blade (30°)	32104-03	0.05512	1.40	MS150CA NC0224-E
SM3V-1.5 Stripping Blade (30°)	32053-03	0.05906	1.50	L49703-D
SM3V-1.6 Stripping Blade (30°)	32105-03	0.06299	1.60	-
SM3V-1.7 Stripping Blade (30°)	32106-03	0.06693	1.70	MS180CA NC0224-F
SM3V-1.8 Stripping Blade (30°)	32054-03	0.07087	1.80	-
SM3V-1.9 Stripping Blade (30°)	32107-03	0.07480	1.90	MS200CA NC0224-G
SM3V-2.0 Stripping Blade (30°)	32055-03	0.07874	2.00	L49704-E MS220CA NC0224-H
SM3V-2.2 Stripping Blade (30°)	32056-03	0.08661	2.20	L49704-F
SM3V-2.4 Stripping Blade (30°)	32057-03	0.09449	2.40	MS240CA NC0224-J
SM3V-2.6 Stripping Blade (30°)	32108-03	0.10236	2.60	-
SM3V-2.8 Stripping Blade (30°)	32109-03	0.11024	2.80	-
SM3V-3.0 Stripping Blade (30°)	32058-03	0.11811	3.00	MS300CA NC0224-K

# ShinMaywa TR111 Series Blades

Used in the following *ShinMaywa* machines:

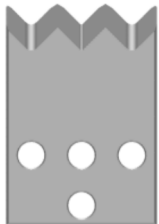
TR111 | TR201 | TR202 | TRD111 | TRD301 | TRD302



## TR111/TR201/TR202 and TRD111/TRD301/TRD302 90° V-Style Blades (30°)

Mechtrix Description	Mechtrix Part Number	Blade Form (in)	Diameter (mm)	OEM Part Number
SM3V90-0.5 Stripping Blade (30°)	32018-03	0.01969	0.50	NC0002-A NC0018-A
SM3V90-1.0 Stripping Blade (30°)	32019-03	0.03937	1.00	NC0002-B NC0018-B
SM3V90-1.2 Stripping Blade (30°)	32020-03	0.04724	1.20	-
SM3V90-1.4 Stripping Blade (30°)	32021-03	0.05512	1.40	-
SM3V90-1.5 Stripping Blade (30°)	28243-03	0.05906	1.50	NC0002-C NC0018-C
SM3V90-1.6 Stripping Blade (30°)	32022-03	0.06299	1.60	-
SM3V90-1.7 Stripping Blade (30°)	32023-03	0.06693	1.70	-
SM3V90-1.9 Stripping Blade (30°)	32024-03	0.07480	1.90	-
SM3V90-2.0 Stripping Blade (30°)	32025-03	0.07874	2.00	NC0002-D NC0018-D
SM3V90-2.4 Stripping Blade (30°)	28244-03	0.09449	2.40	-
SM3V90-2.6 Stripping Blade (30°)	32026-03	0.10236	2.60	-
SM3V90-2.8 Stripping Blade (30°)	32027-03	0.11024	2.80	-
SM3V90-3.0 Stripping Blade (30°)	32028-03	0.11811	3.00	NC0002-E NC0018-E

Additional V-Style Blades are available in 0.1mm increments in the following sizes:  
SM3V90-0.3 thru SM3V90-3.0



## TR111/TR201/TR202 and TRD111/TRD301/TRD302 V-Blades w/Ø2.0 Cut-off

Mechtrix Description	Mechtrix Part Number	Blade Form (in)	Diameter (mm)	OEM Part Number
SM3V-0.9 Strip Blade (30°) w/Ø2.0 Cut-off	32110-03	0.03543	0.90	NC0383-A
SM3V-1.1 Strip Blade (30°) w/Ø2.0 Cut-off	32111-03	0.04331	1.10	NC0383-B
SM3V-1.3 Strip Blade (30°) w/Ø2.0 Cut-off	32112-03	0.05118	1.30	NC0383-C
SM3V-1.6 Strip Blade (30°) w/Ø2.0 Cut-off	32113-03	0.06299	1.60	NC0383-D
SM3V-1.8 Strip Blade (30°) w/Ø2.0 Cut-off	32117-03	0.07087	1.80	NC0383-H
SM3V-2.2 Strip Blade (30°) w/Ø2.0 Cut-off	32114-03	0.08661	2.20	NC0383-E
SM3V-3.0 Strip Blade (30°) w/Ø2.0 Cut-off	32115-03	0.11811	3.00	NC0383-F
SM3V-3.5 Strip Blade (30°) w/Ø2.0 Cut-off	32116-03	0.13780	3.50	NC0383-G

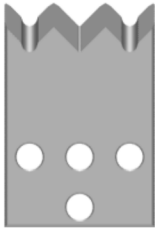
Additional V-Style Blades are available in 0.1mm increments in the following sizes:  
SM3V-0.3 thru SM3V-3.0

# ShinMaywa TR111 Series Blades



Used in the following *ShinMaywa* machines:

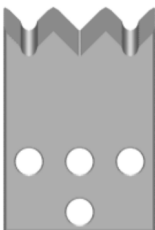
TR111 | TR201 | TR202 | TRD111 | TRD301 | TRD302



## TR111/TR201/TR202 and TRD111/TRD301/TRD302 M-Series Blades

Mechtrix Description	Mechtrix Part Number	Blade Form (in)	Diameter (mm)	OEM Part Number
SM3M-0.9 Stripping Blade (20°)	32059-03	0.03543	0.90	3090 L48755-A
SM3M-1.1 Stripping Blade (20°)	32060-03	0.04331	1.10	3110 L48755-B
SM3M-1.3 Stripping Blade (20°)	32061-03	0.05118	1.30	3130 L48755-C
SM3M-1.5 Stripping Blade (20°)	32062-03	0.05906	1.50	3150 L48755-D
SM3M-1.8 Stripping Blade (20°)	32063-03	0.07087	1.80	3180 L48755-E
SM3M-2.0 Stripping Blade (20°)	32064-03	0.07874	2.00	3200 L48755-F
SM3M-2.2 Stripping Blade (20°)	32065-03	0.08661	2.20	3220 L48755-G
SM3M-2.4 Stripping Blade (20°)	32066-03	0.09449	2.40	3240 L48755-H
SM3M-3.0 Stripping Blade (20°)	32067-03	0.11811	3.00	3300 L48755-J

Additional M-Series Blades are available in 0.1mm increments in the following sizes:  
SM3M-0.3 thru SMM-3.0



## TR111/TR201/TR202 and TRD111/TRD301/TRD302 Full Radius Blades

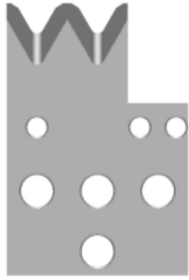
Mechtrix Description	Mechtrix Part Number	Blade Form (in)	Diameter (mm)	OEM Part Number
SM3-0.8D Stripping Blade (30°)	32029-03	0.03150	0.80	-
SM3-0.9D Stripping Blade (30°)	32030-03	0.03543	0.90	-
SM3-1.0D Stripping Blade (30°)	32031-03	0.03937	1.00	-
SM3-1.1D Stripping Blade (30°)	32032-03	0.04331	1.10	-
SM3-1.2D Stripping Blade (30°)	32033-03	0.04724	1.20	-
SM3-1.3D Stripping Blade (30°)	32034-03	0.05118	1.30	-
SM3-1.4D Stripping Blade (30°)	32035-03	0.05512	1.40	-
SM3-1.5D Stripping Blade (30°)	32036-03	0.05906	1.50	-
SM3-1.6D Stripping Blade (30°)	32037-03	0.06299	1.60	-
SM3-1.7D Stripping Blade (30°)	32038-03	0.06693	1.70	-
SM3-1.8D Stripping Blade (30°)	32039-03	0.07087	1.80	-
SM3-1.9D Stripping Blade (30°)	32040-03	0.07480	1.90	-

Additional Full Radius Blades are available in 0.1mm increments in the following sizes:  
SM3-0.3D thru SM3-3.0D

# ShinMaywa TR111 Series Blades

Used in the following *ShinMaywa* machines:

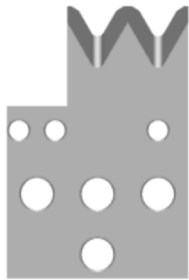
TR111 | TR201 | TR202 | TRD111 | TRD301 | TRD302



## TR111/TR201/TR202 Strip/Slit Blades

Mechtrix Description	Mechtrix Part Number	Blade Form Diameter		OEM Part Number
		(in)	(mm)	
SM3S-1.0 Stripping Blade w/Slit Position	25526-03	0.03937	1.00	MS100C
SM3S-1.1 Stripping Blade w/Slit Position	32015-03	0.04331	1.10	MS110C
SM3S-1.2 Stripping Blade w/Slit Position	25527-03	0.04724	1.20	MS120C
SM3S-1.3 Stripping Blade w/Slit Position	32016-03	0.05118	1.30	MS130C
SM3S-1.5 Stripping Blade w/Slit Position	25528-03	0.05906	1.50	MS150C
SM3S-1.8 Stripping Blade w/Slit Position	32017-03	0.07087	1.80	MS180C
SM3S-2.2 Stripping Blade w/Slit Position	25529-03	0.08661	2.20	MS220C
SM3SK-D Slitting Blade	25533	-	-	C110126A

Additional Strip/Slit Blades are available in 0.1mm increments in the following sizes:  
SM3S-0.3 thru SM3S-3.0



## TRD111/TRD301/TRD302 Strip/Slit Blades

Mechtrix Description	Mechtrix Part Number	Blade Form Diameter		OEM Part Number
		(in)	(mm)	
SM3SA-0.7 Stripping Blade w/Slit Position		0.02756	0.70	MS070CA
SM3SA-0.9 Stripping Blade w/Slit Position		0.03543	0.90	MS090CA
SM3SA-1.0 Stripping Blade w/Slit Position	46248-03	0.03937	1.00	MS100CA
SM3SA-1.1 Stripping Blade w/Slit Position	46249-03	0.04331	1.10	MS110CA
SM3SA-1.3 Stripping Blade w/Slit Position		0.05118	1.30	MS130CA
SM3SA-1.5 Stripping Blade w/Slit Position		0.05906	1.50	MS150CA
SM3SA-1.8 Stripping Blade w/Slit Position		0.07087	1.80	MS180CA
SM3SA-2.0 Stripping Blade w/Slit Position		0.07874	2.00	MS220CA
SM3SA-2.2 Stripping Blade w/Slit Position		0.08661	2.20	MS220CA
SM3SA-2.4 Stripping Blade w/Slit Position		0.09449	2.40	MS220CA
SM3SA-3.0 Stripping Blade w/Slit Position		0.11811	3.00	MS220CA
SM3SK-2C Slitting Blade	46250	-	-	P36860-C

Additional Strip/Slit Blades are available in 0.1mm increments in the following sizes:  
SM3SA-0.3 thru SM3SA-3.0

