

HPC-3XXX Series Blades

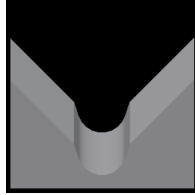
Used in the following Hiprecise machines:

HPC-3XXX

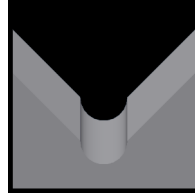
Available HPC-3XXX Blade Form Geometries Include:



Universal



M-Series®



Full-Radius

Hiprecise HPC-3XXX Stripping Blades



Mechtrix Description	Mechtrix Part Number	Blade Form Diameter		OEM Part Number
		(in)	(mm)	
Hiprecise-0.1 Stripping Blade w/Titanium Coating	36428-CT1	0.00787	0.20	8B40306-0.1
Hiprecise-0.2 Stripping Blade w/Titanium Coating	36429-CT1	0.01570	0.40	8B40306-0.2
Hiprecise-0.5 Stripping Blade w/Titanium Coating	36430-CT1	0.03937	1.00	8B40306-0.5
Hiprecise-0.75 Stripping Blade w/Titanium Coating	44795-CT1	0.05906	1.50	8B40306-0.75
Hiprecise-1.0 Stripping Blade w/Titanium Coating	44796-CT1	0.07874	2.00	8B40306-1.0
Hiprecise-1.5 Stripping Blade w/Titanium Coating	44797-CT1	0.11811	3.00	8B40306-1.5
Hiprecise-2.0 Stripping Blade w/Titanium Coating	44798-CT1	0.15748	4.00	8B40306-2.0

Hiprecise HPC-3XXX Cut-off Blades



Mechtrix Description	Mechtrix Part Number	Blade Form Diameter		OEM Part Number
		(in)	(mm)	
Hiprecise Lower Cut-Off Blade w/Titanium Coating	36107-CT1	-	-	8B40406
Hiprecise Upper Cut-Off Blade w/Titanium Coating	44794-CT1	-	-	8B40305
KA (DT) Cut-Off Upper w/Titanium Coating	15542-CT1	-	-	8B40307



Hiprecise HPC-3XXX M-Series® Blades



Mechtrix Description	Mechtrix Part Number	Blade Form Diameter		OEM Part Number
		(in)	(mm)	
KAM-0.3 Strip Blade	25841	0.0118	0.3	-
KAM-0.4 Strip Blade	21898	0.0158	0.4	-
KAM-0.5 Strip Blade	25989	0.0197	0.5	-
KAM-0.6 Strip Blade	27753	0.0236	0.6	-
KAM-0.7 Strip Blade	21166	0.0276	0.7	-
KAM-0.8 Strip Blade	24935	0.0315	0.8	-
KAM-0.9 Strip Blade	26359	0.0354	0.9	-
KAM-1.0 Strip Blade	19732	0.0394	1.0	-
KAM-1.1 Strip Blade	20207	0.0433	1.1	-

Continued on Next Page

HPC-3XXX Series Blades

Used in the following Hiprecise machines:

HPC-3XXX



Hiprecise HPC-3XXX M-Series® Blades

Mechtrix Description	Mechtrix Part Number	Blade Form (in)	Diameter (mm)	OEM Part Number
KAM-1.2 Strip Blade	19735	0.0472	1.2	-
KAM-1.3 Strip Blade	19597	0.0512	1.3	-
KAM-1.4 Strip Blade	19730	0.0551	1.4	-
KAM-1.5 Strip Blade	19847	0.0591	1.5	-
KAM-1.6 Strip Blade	19736	0.0630	1.6	-
KAM-1.7 Strip Blade	19996	0.0669	1.7	-
KAM-1.8 Strip Blade	25194	0.0709	1.8	-
KAM-1.9 Strip Blade	19731	0.0748	1.9	-
KAM-2.0 Strip Blade	27016	0.0787	2.0	-
KAM-2.1 Strip Blade	17485	0.0827	2.1	-
KAM-2.2 Strip Blade	26758	0.0866	2.2	-
KAM-2.3 Strip Blade	19738	0.0906	2.3	-
KAM-2.4 Strip Blade	27910	0.0945	2.4	-
KAM-2.5 Strip Blade	24241	0.0984	2.5	-
KAM-2.6 Strip Blade	17534	0.1024	2.6	-
KAM-2.7 Strip Blade	34103	0.1063	2.7	-
KAM-2.8 Strip Blade	26360	0.1102	2.8	-
KAM-2.9 Strip Blade	19737	0.1142	2.9	-
KAM-3.0 Strip Blade	22487	0.1181	3.0	-
KAM-3.1 Strip Blade	21489	0.1221	3.1	-
KAM-3.2 Strip Blade	32201	0.1260	3.2	-
KAM-3.3 Strip Blade	30351	0.1299	3.3	-
KAM-3.4 Strip Blade	29979	0.1339	3.4	-
KAM-3.5 Strip Blade	21399	0.1378	3.5	-
KAM-3.6 Strip Blade	24828	0.1417	3.6	-
KAM-3.7 Strip Blade	29259	0.1457	3.7	-
KAM-3.8 Strip Blade	27479	0.1496	3.8	-
KAM-3.9 Strip Blade	32070	0.1535	3.9	-
KAM-4.0 Strip Blade	25338	0.1575	4.0	-
KAM-4.1 Strip Blade	38104	0.1614	4.1	-
KAM-4.2 Strip Blade	38105	0.1654	4.2	-
KAM-4.3 Strip Blade	38106	0.1693	4.3	-
KAM-4.4 Strip Blade	38107	0.1732	4.4	-
KAM-4.5 Strip Blade	38108	0.1772	4.5	-
KAM-4.6 Strip Blade	35827	0.1811	4.6	-
KAM-4.7 Strip Blade	38109	0.1850	4.7	-
KAM-4.8 Strip Blade	38110	0.1890	4.8	-
KAM-4.9 Strip Blade	38111	0.1929	4.9	-
KAM-5.0 Strip Blade	38112	0.1969	5.0	-

HPC-3XXX Series Blades

Used in the following *Hiprecise* machines:

HPC-3XXX



Hiprecise HPC-3XXX Full Radius Blades

Mechtrix Description	Mechtrix Part Number	Blade Form (in)	Diameter (mm)	OEM Part Number
KA-0.4D Strip Blade	20901	0.0158	0.4	-
KA-0.5D Strip Blade	33941	0.0197	0.5	-
KA-0.6D Strip Blade	20328	0.0236	0.6	-
KA-0.7D Strip Blade	33942	0.0276	0.7	-
KA-0.8D Strip Blade	39328	0.0315	0.8	-
KA-0.9D Strip Blade	27514	0.0354	0.9	-
KA-1.0D Strip Blade	33943	0.0394	1.0	-
KA-1.1D Strip Blade	39329	0.0433	1.1	-
KA-1.2D Strip Blade	18498	0.0472	1.2	-
KA-1.3D Strip Blade	27032	0.0512	1.3	-
KA-1.4D Strip Blade	39330	0.0551	1.4	-
KA-1.5D Strip Blade	26142	0.0591	1.5	-
KA-1.6D Strip Blade	39331	0.0630	1.6	-
KA-1.7D Strip Blade	29019	0.0669	1.7	-
KA-1.8D Strip Blade	31945	0.0709	1.8	-
KA-1.9D Strip Blade	28433	0.0748	1.9	-
KA-2.0D Strip Blade	33944	0.0787	2.0	-
KA-2.1D Strip Blade	16698	0.0827	2.1	-
KA-2.2D Strip Blade	26759	0.0866	2.2	-
KA-2.3D Strip Blade	38132	0.0906	2.3	-
KA-2.4D Strip Blade	38133	0.0945	2.4	-
KA-2.5D Strip Blade	38134	0.0984	2.5	-
KA-2.6D Strip Blade	38135	0.1024	2.6	-
KA-2.7D Strip Blade	38136	0.1063	2.7	-
KA-2.8D Strip Blade	38137	0.1102	2.8	-
KA-2.9D Strip Blade	38138	0.1142	2.9	-
KA-3.0D Strip Blade	38139	0.1181	3.0	-
KA-3.1D Strip Blade	38140	0.1221	3.1	-
KA-3.2D Strip Blade	38141	0.1260	3.2	-
KA-3.3D Strip Blade	28050	0.1299	3.3	-
KA-3.4D Strip Blade	38142	0.1339	3.4	-
KA-3.5D Strip Blade	38143	0.1378	3.5	-
KA-3.6D Strip Blade	34816	0.1417	3.6	-
KA-3.7D Strip Blade	38144	0.1457	3.7	-
KA-3.8D Strip Blade	38145	0.1496	3.8	-
KA-3.9D Strip Blade	38146	0.1535	3.9	-
KA-4.0D Strip Blade	33981	0.1575	4.0	-
KA-4.1D Strip Blade	38147	0.1614	4.1	-
KA-4.2D Strip Blade	38148	0.1654	4.2	-
KA-4.3D Strip Blade	38149	0.1693	4.3	-
KA-4.4D Strip Blade	38150	0.1732	4.4	-
KA-4.5D Strip Blade	38151	0.1772	4.5	-
KA-4.6D Strip Blade	38152	0.1811	4.6	-
KA-4.7D Strip Blade	38153	0.1850	4.7	-
KA-4.8D Strip Blade	38154	0.1890	4.8	-
KA-4.9D Strip Blade	38155	0.1929	4.9	-
KA-5.0D Strip Blade	38156	0.1969	5.0	-
KA-5.1D Strip Blade	38157	0.2008	5.1	-

Continued on Next Page

HPC-3XXX Series Blades

Used in the following *Hiprecise* machines:

HPC-3XXX



Hiprecise HPC-3XXX Full Radius Blades (continued)

Mechtrix Description	Mechtrix Part Number	Blade Form (in)	Diameter (mm)	OEM Part Number
KA-5.2D Strip Blade	38158	0.2047	5.2	-
KA-5.3D Strip Blade	38159	0.2087	5.3	-
KA-5.4D Strip Blade	38160	0.2126	5.4	-
KA-5.5D Strip Blade	38161	0.2165	5.5	-
KA-5.6D Strip Blade	38162	0.2205	5.6	-
KA-5.7D Strip Blade	38163	0.2244	5.7	-
KA-5.8D Strip Blade	38164	0.2284	5.8	-
KA-5.9D Strip Blade	38165	0.2323	5.9	-
KA-6.0D Strip Blade	30003	0.2362	6.0	-
KA-6.1D Strip Blade	38166	0.2402	6.1	-
KA-6.2D Strip Blade	38167	0.2441	6.2	-
KA-6.3D Strip Blade	38168	0.2480	6.3	-
KA-6.4D Strip Blade	38169	0.2520	6.4	-
KA-6.5D Strip Blade	38170	0.2559	6.5	-
KA-6.6D Strip Blade	38171	0.2598	6.6	-
KA-6.7D Strip Blade	38172	0.2638	6.7	-
KA-6.8D Strip Blade	38173	0.2677	6.8	-
KA-6.9D Strip Blade	38174	0.2717	6.9	-
KA-7.0D Strip Blade	29925	0.2756	7.0	-