

Carpenter 97A Series Blades

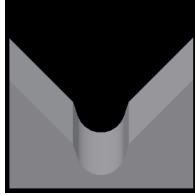
Used in the following **Carpenter** machines:

Model 93 | Model 97A | Model 930 | Model 970

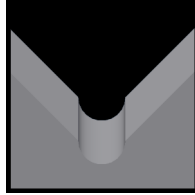
Available 97A Blade Form Geometries Include:



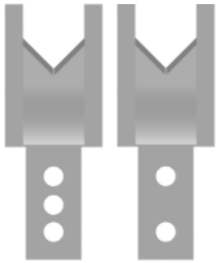
Universal



M-Series®

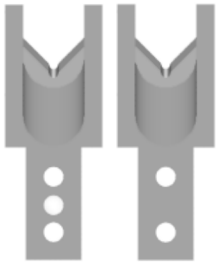


Full-Radius



Carpenter 93 and 97A Universal Stripping and Cut-off Blades

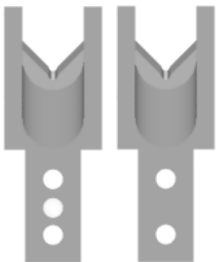
Mechtrix Description	Mechtrix Part Number	Blade Form Diameter (in)	Blade Form Diameter (mm)	OEM Part Number
Carpenter C97 Universal Strip Blade (Tool Steel)	26496-03	-	-	08961
Carpenter C97 Universal Strip Blade (Carbide)	26496-02	-	-	-
Carpenter C97 Heavy Duty Strip Blade (Tool Steel)	26497-03	-	-	-
Carpenter C97 Heavy Duty Strip Blade (Carbide)	26497-02	-	-	-



Carpenter 93 and 97A M-Series® Blades

M-Series Blades are available in 0.1mm increments in the following sizes:

C97M-0.4 thru **C97M-4.0**



Carpenter 93 and 97A Full Radius Blades

Full Radius Blades are available in 0.1mm increments in the following sizes:

C97-0.4D thru **C97-4.0D**