

Komax KA433 Series Blades

Used in the following Komax machines:

Alpha 355, 356, 358, 433, 455, 477, 488, 530, 550, 560, & 565 | Gamma 450 | Zeta & Omega Series

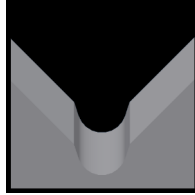
Available KA433 Blade Form Geometries Include:



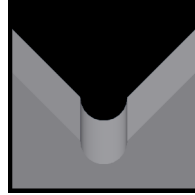
Universal



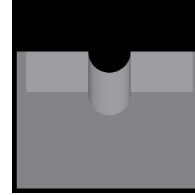
V-Style



M-Series®



Full-Radius



Die-Type

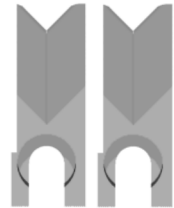


Cyclonic-V®



KA433 V-Style Stripping Blades

Mechtrix Description	Mechtrix Part Number	Blade Form Diameter		OEM Part Number
		(in)	(mm)	
KA433-0.1 Strip Blade w/TiN Coating	21651-CT1	0.00787	0.20	0048492
KA433-0.35 Strip Blade w/TiN Coating	31883-CT1	0.02756	0.70	0800006
KA433-0.5 Strip Blade w/TiN Coating	21284-CT1	0.03937	1.00	0045592
KA433-0.75 Strip Blade w/TiN Coating	21652-CT1	0.05906	1.50	0045588
KA433-1.0 Strip Blade w/TiN Coating	21283-CT1	0.07874	2.00	0045589
KA433-1.5 Strip Blade w/TiN Coating	21653-CT1	0.11811	3.00	0045590
KA433-2.0 Strip Blade w/TiN Coating	21654-CT1	0.15748	4.00	0045591
KA433-2.5 Strip Blade w/TiN Coating	27932-CT1	0.19690	5.00	0062222



KA433 Style Cut-off Blades

Mechtrix Description	Mechtrix Part Number	Blade Form Diameter		OEM Part Number
		(in)	(mm)	
KA433/477/488 Upper Cut-off Blade R-0.5	21287-CT1	-	-	0045593
KA433/477/488 Lower Cut-off Blade R-0.5	21285-CT1	-	-	0045603
KA433 (DT) Upper Cut-off Blade R-0.5	21655-CT1	-	-	0047954
KA433 (DT) Lower Cut-off Blade R-0.5	21286-CT1	-	-	0045598
KA433/477/488 Upper Cut-off Blade R-.75	25770-CT1	-	-	0045594
KA433/477/488 Lower Cut-off Blade R-.75	28701-CT1	-	-	0045604
KA433/477/488 Upper Cut-off Blade R-1.0	25769-CT1	-	-	0045595
KA433/477/488 Lower Cut-off Blade R-1.0	25771-CT1	-	-	0045605
KA433/477/488 Upper Cut-off Blade R-2.0	26870-CT1	-	-	0045597
KA433/477/488 Lower Cut-off Blade R-2.0	26876-CT1	-	-	0045608
KA433/477/488 Upper Cut-off Blade R-2.5	38051-CT1	-	-	0084826
KA433/477/488 Lower Cut-off Blade R-2.5	38052-CT1	-	-	0084822
KA477/488 Lower Cut-off Blade	24572-CT1	-	-	0048875
KA477/488 (DT) and Lower Cut-off Blade	24424-CT1	-	-	0048876
KA433H Upper Cut-off Blade R-2.0	34483-CT1	-	-	0301867
KA433H Lower Cut-off Blade R-2.0	34482-CT1	-	-	0301866
KA433H (DT) Upper Cut-off Blade	34899-CT1	-	-	0059076
KA433H (DT) Lower Cut-off Blade	34897-CT1	-	-	0059077
KA355 (DT) Cut-off Blade R-0.5	30288-CT1	-	-	0073449



Komax KA433 Series Blades



Used in the following Komax machines:

Alpha 355, 356, 358, 433, 455, 477, 488, 530, 550, 560, & 565 | Gamma 450 | Zeta & Omega Series



KA433 M-Series® Blades

Mechtrix Description	Mechtrix	Blade Form Diameter		OEM
	Part Number	(in)	(mm)	Part Number
KA433M-0.3 Strip Blade w/TiN Coating	28043-CT1	0.0118	0.3	-
KA433M-0.4 Strip Blade w/TiN Coating	28044-CT1	0.0158	0.4	-
KA433M-0.5 Strip Blade w/TiN Coating	30581-CT1	0.0197	0.5	-
KA433M-0.6 Strip Blade w/TiN Coating	28827-CT1	0.0236	0.6	-
KA433M-0.7 Strip Blade w/TiN Coating	28964-CT1	0.0276	0.7	-
KA433M-0.8 Strip Blade w/TiN Coating	28392-CT1	0.0315	0.8	-
KA433M-0.9 Strip Blade w/TiN Coating	30510-CT1	0.0354	0.9	-
KA433M-1.0 Strip Blade w/TiN Coating	25196-CT1	0.0394	1.0	-
KA433M-1.1 Strip Blade w/TiN Coating	30029-CT1	0.0433	1.1	-
KA433M-1.2 Strip Blade w/TiN Coating	27209-CT1	0.0472	1.2	-
KA433M-1.3 Strip Blade w/TiN Coating	25193-CT1	0.0512	1.3	-
KA433M-1.4 Strip Blade w/TiN Coating	28965-CT1	0.0551	1.4	-
KA433M-1.5 Strip Blade w/TiN Coating	27973-CT1	0.0591	1.5	-
KA433M-1.6 Strip Blade w/TiN Coating	29840-CT1	0.0630	1.6	-
KA433M-1.7 Strip Blade w/TiN Coating	25197-CT1	0.0669	1.7	-
KA433M-1.8 Strip Blade w/TiN Coating	25195-CT1	0.0709	1.8	-
KA433M-1.9 Strip Blade w/TiN Coating	30374-CT1	0.0748	1.9	-
KA433M-2.0 Strip Blade w/TiN Coating	29378-CT1	0.0787	2.0	-
KA433M-2.1 Strip Blade w/TiN Coating	26820-CT1	0.0827	2.1	-
KA433M-2.2 Strip Blade w/TiN Coating	27974-CT1	0.0866	2.2	-
KA433M-2.3 Strip Blade w/TiN Coating	30033-CT1	0.0906	2.3	-
KA433M-2.4 Strip Blade w/TiN Coating	30039-CT1	0.0945	2.4	-
KA433M-2.5 Strip Blade w/TiN Coating	34043-CT1	0.0984	2.5	-
KA433M-2.6 Strip Blade w/TiN Coating	36443-CT1	0.1024	2.6	-
KA433M-2.7 Strip Blade w/TiN Coating	34044-CT1	0.1063	2.7	-
KA433M-2.8 Strip Blade w/TiN Coating	29919-CT1	0.1102	2.8	-
KA433M-2.9 Strip Blade w/TiN Coating	32740-CT1	0.1142	2.9	-
KA433M-3.0 Strip Blade w/TiN Coating	30126-CT1	0.1181	3.0	-
KA433M-3.1 Strip Blade w/TiN Coating	30422-CT1	0.1221	3.1	-
KA433M-3.2 Strip Blade w/TiN Coating	33382-CT1	0.1260	3.2	-
KA433M-3.3 Strip Blade w/TiN Coating	35479-CT1	0.1299	3.3	-
KA433M-3.4 Strip Blade w/TiN Coating	31854-CT1	0.1339	3.4	-
KA433M-3.5 Strip Blade w/TiN Coating	30032-CT1	0.1378	3.5	-
KA433M-3.6 Strip Blade w/TiN Coating	35480-CT1	0.1417	3.6	-
KA433M-3.7 Strip Blade w/TiN Coating	35462-CT1	0.1457	3.7	-
KA433M-3.8 Strip Blade w/TiN Coating	35481-CT1	0.1496	3.8	-
KA433M-3.9 Strip Blade w/TiN Coating	35482-CT1	0.1535	3.9	-
KA433M-4.0 Strip Blade w/TiN Coating	33264-CT1	0.1575	4.0	-

Komax KA433 Series Blades



Used in the following Komax machines:

Alpha 355, 356, 358, 433, 455, 477, 488, 530, 550, 560, & 565 | Gamma 450 | Zeta & Omega Series



KA433 Full Radius Blades

Mechtrix Description	Mechtrix Part Number	Blade Form Diameter		OEM Part Number
		(in)	(mm)	
KA433-0.3D Strip Blade w/TiN Coating	36423-CT1	0.0118	0.3	-
KA433-0.4D Strip Blade w/TiN Coating	36424-CT1	0.0158	0.4	-
KA433-0.5D Strip Blade w/TiN Coating	30134-CT1	0.0197	0.5	-
KA433-0.6D Strip Blade w/TiN Coating	29624-CT1	0.0236	0.6	-
KA433-0.7D Strip Blade w/TiN Coating	29625-CT1	0.0276	0.7	-
KA433-0.8D Strip Blade w/TiN Coating	30135-CT1	0.0315	0.8	-
KA433-0.9D Strip Blade w/TiN Coating	35846-CT1	0.0354	0.9	-
KA433-1.0D Strip Blade w/TiN Coating	29633-CT1	0.0394	1.0	-
KA433-1.1D Strip Blade w/TiN Coating	35077-CT1	0.0433	1.1	-
KA433-1.2D Strip Blade w/TiN Coating	30136-CT1	0.0472	1.2	-
KA433-1.3D Strip Blade w/TiN Coating	37414-CT1	0.0512	1.3	-
KA433-1.4D Strip Blade w/TiN Coating	30137-CT1	0.0551	1.4	-
KA433-1.5D Strip Blade w/TiN Coating	33939-CT1	0.0591	1.5	-
KA433-1.6D Strip Blade w/TiN Coating	44286-CT1	0.0630	1.6	-
KA433-1.7D Strip Blade w/TiN Coating	32904-CT1	0.0669	1.7	-
KA433-1.8D Strip Blade w/TiN Coating	37133-CT1	0.0709	1.8	-
KA433-1.9D Strip Blade w/TiN Coating	38349-CT1	0.0748	1.9	-
KA433-2.0D Strip Blade w/TiN Coating	33940-CT1	0.0787	2.0	-
KA433-2.1D Strip Blade w/TiN Coating	33267-CT1	0.0827	2.1	-
KA433-2.2D Strip Blade w/TiN Coating	33268-CT1	0.0866	2.2	-
KA433-2.3D Strip Blade w/TiN Coating	33269-CT1	0.0906	2.3	-
KA433-2.4D Strip Blade w/TiN Coating	38350-CT1	0.0945	2.4	-
KA433-2.5D Strip Blade w/TiN Coating	38351-CT1	0.0984	2.5	-
KA433-2.6D Strip Blade w/TiN Coating	38352-CT1	0.1024	2.6	-
KA433-2.7D Strip Blade w/TiN Coating	38353-CT1	0.1063	2.7	-
KA433-2.8D Strip Blade w/TiN Coating	30766-CT1	0.1102	2.8	-
KA433-2.9D Strip Blade w/TiN Coating	32466-CT1	0.1142	2.9	-
KA433-3.0D Strip Blade w/TiN Coating	38354-CT1	0.1181	3.0	-
KA433-3.1D Strip Blade w/TiN Coating	36482-CT1	0.1221	3.1	-
KA433-3.2D Strip Blade w/TiN Coating	38355-CT1	0.1260	3.2	-
KA433-3.3D Strip Blade w/TiN Coating	36100-CT1	0.1299	3.3	-
KA433-3.4D Strip Blade w/TiN Coating	37073-CT1	0.1339	3.4	-
KA433-3.5D Strip Blade w/TiN Coating	37033-CT1	0.1378	3.5	-
KA433-3.6D Strip Blade w/TiN Coating	37034-CT1	0.1417	3.6	-
KA433-3.7D Strip Blade w/TiN Coating	37074-CT1	0.1457	3.7	-
KA433-3.8D Strip Blade w/TiN Coating	38356-CT1	0.1496	3.8	-
KA433-3.9D Strip Blade w/TiN Coating	38357-CT1	0.1535	3.9	-
KA433-4.0D Strip Blade w/TiN Coating	38358-CT1	0.1575	4.0	-

Komax KA433 Series Blades



Used in the following Komax machines:

Alpha 355, 356, 358, 433, 455, 477, 488, 530, 550, 560, & 565 | Gamma 450 | Zeta & Omega Series



KA433 Die-Type Blades

Mechtrix Description	Mechtrix	Blade Form Diameter		OEM
	Part Number	(in)	(mm)	Part Number
KA433D-0.5 Strip Blade w/TiN Coating	36513-0.5-CT1	0.01969	0.50	0059136
KA433D-0.55 Strip Blade w/TiN Coating	36513-0.55-CT1	0.02165	0.55	0067943
KA433D-0.6 Strip Blade w/TiN Coating	36513-0.6-CT1	0.02362	0.60	0059137
KA433D-0.65 Strip Blade w/TiN Coating	36513-0.65-CT1	0.02559	0.65	0067944
KA433D-0.7 Strip Blade w/TiN Coating	36513-0.7-CT1	0.02756	0.70	0059138
KA433D-0.75 Strip Blade w/TiN Coating	36513-0.75-CT1	0.02953	0.75	0067945
KA433D-0.8 Strip Blade w/TiN Coating	36513-0.8-CT1	0.03150	0.80	0059139
KA433D-0.85 Strip Blade w/TiN Coating	36513-0.85-CT1	0.03346	0.85	0067946
KA433D-0.9 Strip Blade w/TiN Coating	36513-0.9-CT1	0.03543	0.90	0059140
KA433D-0.95 Strip Blade w/TiN Coating	36513-0.95-CT1	0.03740	0.95	0067947
KA433D-1.0 Strip Blade w/TiN Coating	36513-1.0-CT1	0.03937	1.00	0059141
KA433D-1.05 Strip Blade w/TiN Coating	36513-1.05-CT1	0.04134	1.05	0067948
KA433D-1.1 Strip Blade w/TiN Coating	36513-1.1-CT1	0.04331	1.10	0059142
KA433D-1.2 Strip Blade w/TiN Coating	36513-1.2-CT1	0.04724	1.20	0059143
KA433D-1.25 Strip Blade w/TiN Coating	36513-1.25-CT1	0.04921	1.25	0070074
KA433D-1.3 Strip Blade w/TiN Coating	36513-1.3-CT1	0.05118	1.30	0059144
KA433D-1.4 Strip Blade w/TiN Coating	36513-1.4-CT1	0.05512	1.40	0059145
KA433D-1.45 Strip Blade w/TiN Coating	36513-1.45-CT1	0.05709	1.45	0080417
KA433D-1.5 Strip Blade w/TiN Coating	36513-1.5-CT1	0.05906	1.50	0059146
KA433D-1.55 Strip Blade w/TiN Coating	36513-1.55-CT1	0.06102	1.55	0073412
KA433D-1.6 Strip Blade w/TiN Coating	36513-1.6-CT1	0.06299	1.60	0059147
KA433D-1.7 Strip Blade w/TiN Coating	36513-1.7-CT1	0.06693	1.70	0059148
KA433D-1.75 Strip Blade w/TiN Coating	36513-1.75-CT1	0.06890	1.75	0070075
KA433D-1.8 Strip Blade w/TiN Coating	36513-1.8-CT1	0.07087	1.80	0059149
KA433D-1.85 Strip Blade w/TiN Coating	36513-1.85-CT1	0.07283	1.85	0070076
KA433D-1.9 Strip Blade w/TiN Coating	36513-1.9-CT1	0.07480	1.90	0059150
KA433D-2.0 Strip Blade w/TiN Coating	36513-2.0-CT1	0.07874	2.00	0059151
KA433D-2.1 Strip Blade w/TiN Coating	36513-2.1-CT1	0.08268	2.10	0059152
KA433D-2.2 Strip Blade w/TiN Coating	36513-2.2-CT1	0.08661	2.20	0059153
KA433D-2.3 Strip Blade w/TiN Coating	36513-2.3-CT1	0.09055	2.30	0059154
KA433D-2.4 Strip Blade w/TiN Coating	36513-2.4-CT1	0.09449	2.40	0059155
KA433D-2.5 Strip Blade w/TiN Coating	36513-2.5-CT1	0.09843	2.50	0059156
KA433D-2.6 Strip Blade w/TiN Coating	36513-2.6-CT1	0.10236	2.60	0059157
KA433D-2.7 Strip Blade w/TiN Coating	36513-2.7-CT1	0.10630	2.70	0059158
KA433D-2.8 Strip Blade w/TiN Coating	36513-2.8-CT1	0.11024	2.80	0059159
KA433D-2.9 Strip Blade w/TiN Coating	36513-2.9-CT1	0.11417	2.90	0059160
KA433D-3.0 Strip Blade w/TiN Coating	36513-3.0-CT1	0.11811	3.00	0059161
KA433D-3.1 Strip Blade w/TiN Coating	36513-3.1-CT1	0.12205	3.10	0059162
KA433D-3.2 Strip Blade w/TiN Coating	36513-3.2-CT1	0.12598	3.20	0059163
KA433D-3.3 Strip Blade w/TiN Coating	36513-3.3-CT1	0.12992	3.30	0059164
KA433D-3.4 Strip Blade w/TiN Coating	36513-3.4-CT1	0.13386	3.40	0059165
KA433D-3.5 Strip Blade w/TiN Coating	36513-3.5-CT1	0.13780	3.50	0059166
KA433D-3.6 Strip Blade w/TiN Coating	36513-3.6-CT1	0.14173	3.60	0059167
KA433D-3.7 Strip Blade w/TiN Coating	36513-3.7-CT1	0.14567	3.70	0059168
KA433D-3.8 Strip Blade w/TiN Coating	36513-3.8-CT1	0.14961	3.80	0059169
KA433D-3.9 Strip Blade w/TiN Coating	36513-3.9-CT1	0.15354	3.90	0059170
KA433D-4.0 Strip Blade w/TiN Coating	36513-4.0-CT1	0.15748	4.00	0059171

Komax KA433 Series Blades



Used in the following Komax machines:

Alpha 355, 356, 358, 433, 455, 477, 488, 530, 550, 560, & 565 | Gamma 450 | Zeta & Omega Series



KA433 Guide Plates

Mechtrix Description	Mechtrix Part Number	Blade Form Diameter		OEM Part Number
		(in)	(mm)	
KA433GP-0.5 Guide Plate	37209-0.5	0.01969	0.50	0059176
KA433GP-0.6 Guide Plate	37209-0.6	0.02362	0.60	0059177
KA433GP-0.7 Guide Plate	37209-0.7	0.02756	0.70	0059178
KA433GP-0.8 Guide Plate	37209-0.8	0.03150	0.80	0059179
KA433GP-0.9 Guide Plate	37209-0.9	0.03543	0.90	0059180
KA433GP-0.95 Guide Plate	37209-0.95	0.03740	0.95	0067950
KA433GP-1.0 Guide Plate	37209-1.0	0.03937	1.00	0059181
KA433GP-1.05 Guide Plate	37209-1.05	0.04133	1.05	0067951
KA433GP-1.1 Guide Plate	37209-1.1	0.04331	1.10	0059182
KA433GP-1.2 Guide Plate	37209-1.2	0.04724	1.20	0059183
KA433GP-1.25 Guide Plate	37209-1.25	0.04921	1.25	0307363
KA433GP-1.3 Guide Plate	37209-1.3	0.05118	1.30	0059184
KA433GP-1.35 Guide Plate	37209-1.35	0.05315	1.35	0067952
KA433GP-1.4 Guide Plate	37209-1.4	0.05512	1.40	0059185
KA433GP-1.5 Guide Plate	37209-1.5	0.05906	1.50	0059186
KA433GP-1.6 Guide Plate	37209-1.6	0.06299	1.60	0059187
KA433GP-1.7 Guide Plate	37209-1.7	0.06693	1.70	0059188
KA433GP-1.8 Guide Plate	37209-1.8	0.07087	1.80	0059189
KA433GP-1.9 Guide Plate	37209-1.9	0.07480	1.90	0059190
KA433GP-2.0 Guide Plate	37209-2.0	0.07874	2.00	0059191
KA433GP-2.1 Guide Plate	37209-2.1	0.08268	2.10	0059192
KA433GP-2.2 Guide Plate	37209-2.2	0.08661	2.20	0059193
KA433GP-2.3 Guide Plate	37209-2.3	0.09055	2.30	0059194
KA433GP-2.4 Guide Plate	37209-2.4	0.09449	2.40	0059195
KA433GP-2.5 Guide Plate	37209-2.5	0.09843	2.50	0059196
KA433GP-2.6 Guide Plate	37209-2.6	0.10236	2.60	0059197
KA433GP-2.7 Guide Plate	37209-2.7	0.10630	2.70	0059198
KA433GP-2.8 Guide Plate	37209-2.8	0.11024	2.80	0059199
KA433GP-2.9 Guide Plate	37209-2.9	0.11417	2.90	0059200
KA433GP-3.0 Guide Plate	37209-3.0	0.11811	3.00	0059201
KA433GP-3.1 Guide Plate	37209-3.1	0.12205	3.10	0059202
KA433GP-3.2 Guide Plate	37209-3.2	0.12598	3.20	0059203
KA433GP-3.3 Guide Plate	37209-3.3	0.12992	3.30	0059204
KA433GP-3.4 Guide Plate	37209-3.4	0.13386	3.40	0059205
KA433GP-3.5 Guide Plate	37209-3.5	0.13780	3.50	0059206
KA433GP-3.6 Guide Plate	37209-3.6	0.14173	3.60	0059207
KA433GP-3.7 Guide Plate	37209-3.7	0.14567	3.70	0059208
KA433GP-3.8 Guide Plate	37209-3.8	0.14961	3.80	0059209
KA433GP-3.9 Guide Plate	37209-3.9	0.15354	3.90	0059210
KA433GP-4.0 Guide Plate	37209-4.0	0.15748	4.00	0059211
KA433GP-4.1 Guide Plate	37209-4.1	0.16141	4.10	0307364
KA433GP-4.2 Guide Plate	37209-4.2	0.16535	4.20	0307365
KA433GP-4.3 Guide Plate	37209-4.3	0.16929	4.30	0307366
KA433GP-4.4 Guide Plate	37209-4.4	0.17322	4.40	0307367
KA433GP-4.5 Guide Plate	37209-4.5	0.17717	4.50	0307371
KA433GP-4.6 Guide Plate	37209-4.6	0.18110	4.60	0307372

Continued on Next Page

Komax KA433 Series Blades



Used in the following Komax machines:

Alpha 355, 356, 358, 433, 455, 477, 488, 530, 550, 560, & 565 | Gamma 450 | Zeta & Omega Series



KA433 Guide Plates (continued)

Mechtrix Description	Mechtrix Part Number	Blade Form Diameter		OEM Part Number
		(in)	(mm)	
KA433GP-4.7 Guide Plate	37209-4.7	0.18504	4.70	0307373
KA433GP-4.8 Guide Plate	37209-4.8	0.18898	4.80	0307374
KA433GP-4.9 Guide Plate	37209-4.9	0.19291	4.90	0307375
KA433GP-5.0 Guide Plate	37209-5.0	0.19685	5.00	0307376
KA433GP-5.1 Guide Plate	37209-5.1	0.20079	5.10	0307377
KA433GP-5.2 Guide Plate	37209-5.2	0.20472	5.20	0307378
KA433GP-5.3 Guide Plate	37209-5.3	0.20866	5.30	0307379
KA433GP-5.4 Guide Plate	37209-5.4	0.21260	5.40	0307380
KA433GP-5.5 Guide Plate	37209-5.5	0.21654	5.50	0307381
KA433GP-5.6 Guide Plate	37209-5.6	0.22047	5.60	0307382
KA433GP-5.7 Guide Plate	37209-5.7	0.22441	5.70	0307383
KA433GP-5.8 Guide Plate	37209-5.8	0.22835	5.80	0307384
KA433GP-5.9 Guide Plate	37209-5.9	0.23228	5.90	0307385
KA433GP-6.0 Guide Plate	37209-6.0	0.23622	6.00	0307386
KA433GP-6.1 Guide Plate	37209-6.1	0.24016	6.10	0307387
KA433GP-6.2 Guide Plate	37209-6.2	0.24409	6.20	0307388
KA433GP-6.3 Guide Plate	37209-6.3	0.24803	6.30	0307389
KA433GP-6.4 Guide Plate	37209-6.4	0.25197	6.40	0307390
KA433GP-6.5 Guide Plate	37209-6.5	0.25591	6.50	0307391
KA433GP-6.6 Guide Plate	37209-6.6	0.25984	6.60	0307392
KA433GP-6.7 Guide Plate	37209-6.7	0.26378	6.70	0307393
KA433GP-6.8 Guide Plate	37209-6.8	0.26772	6.80	0307394
KA433GP-6.9 Guide Plate	37209-6.9	0.27165	6.90	0307395
KA433GP-7.0 Guide Plate	37209-7.0	0.27559	7.00	0307396
KA433GP-7.1 Guide Plate	37209-7.1	0.27953	7.10	0307397
KA433GP-7.2 Guide Plate	37209-7.2	0.28346	7.20	0307398
KA433GP-7.3 Guide Plate	37209-7.3	0.28740	7.30	0307399
KA433GP-7.4 Guide Plate	37209-7.4	0.29134	7.40	0307400
KA433GP-7.5 Guide Plate	37209-7.5	0.29528	7.50	0307401
KA433GP-7.6 Guide Plate	37209-7.6	0.29921	7.60	0307402
KA433GP-7.7 Guide Plate	37209-7.7	0.30315	7.70	0307403
KA433GP-7.8 Guide Plate	37209-7.8	0.30709	7.80	0307404
KA433GP-7.9 Guide Plate	37209-7.9	0.31102	7.90	0307405
KA433GP-8.0 Guide Plate	37209-8.0	0.31496	8.00	0307406

Komax KA433 Series Blades



Used in the following Komax machines:

Alpha 355, 356, 358, 433, 455, 477, 488, 530, 550, 560, & 565 | Gamma 450 | Zeta & Omega Series



KA433 Support Plates

Mechtrix Description	Mechtrix	Blade Form Diameter		OEM
	Part Number	(in)	(mm)	Part Number
KA433SP-0.5 Support Plate	37210-0.5	0.01969	0.50	0307407
KA433SP-0.6 Support Plate	37210-0.6	0.02362	0.60	0307408
KA433SP-0.7 Support Plate	37210-0.7	0.02756	0.70	0307409
KA433SP-0.8 Support Plate	37210-0.8	0.03150	0.80	0307410
KA433SP-0.9 Support Plate	37210-0.9	0.03543	0.90	0067953
KA433SP-0.95 Support Plate	37210-0.95	0.03740	0.95	0067954
KA433SP-1.0 Support Plate	37210-1.0	0.03937	1.00	0067955
KA433SP-1.05 Support Plate	37210-1.05	0.04133	1.05	0067956
KA433SP-1.1 Support Plate	37210-1.1	0.04331	1.10	0067957
KA433SP-1.15 Support Plate	37210-1.15	0.04527	1.15	0067958
KA433SP-1.2 Support Plate	37210-1.2	0.04724	1.20	0067959
KA433SP-1.25 Support Plate	37210-1.25	0.04921	1.25	0067960
KA433SP-1.3 Support Plate	37210-1.3	0.05118	1.30	0067961
KA433SP-1.35 Support Plate	37210-1.35	0.05315	1.35	0067962
KA433SP-1.4 Support Plate	37210-1.4	0.05512	1.40	0067963
KA433SP-1.5 Support Plate	37210-1.5	0.05906	1.50	0071384
KA433SP-1.6 Support Plate	37210-1.6	0.06299	1.60	0071385
KA433SP-1.7 Support Plate	37210-1.7	0.06693	1.70	0073409
KA433SP-1.8 Support Plate	37210-1.8	0.07087	1.80	0073410
KA433SP-1.9 Support Plate	37210-1.9	0.07480	1.90	0080422
KA433SP-2.0 Support Plate	37210-2.0	0.07874	2.00	0071386
KA433SP-2.1 Support Plate	37210-2.1	0.08268	2.10	0071387
KA433SP-2.2 Support Plate	37210-2.2	0.08661	2.20	0075741
KA433SP-2.3 Support Plate	37210-2.3	0.09055	2.30	0075742
KA433SP-2.4 Support Plate	37210-2.4	0.09449	2.40	0307411
KA433SP-2.5 Support Plate	37210-2.5	0.09843	2.50	0307412
KA433SP-2.6 Support Plate	37210-2.6	0.10236	2.60	0307413
KA433SP-2.7 Support Plate	37210-2.7	0.10630	2.70	0307414
KA433SP-2.8 Support Plate	37210-2.8	0.11024	2.80	0307415
KA433SP-2.9 Support Plate	37210-2.9	0.11417	2.90	0307416
KA433SP-3.0 Support Plate	37210-3.0	0.11811	3.00	0307417
KA433SP-3.1 Support Plate	37210-3.1	0.12205	3.10	0307418
KA433SP-3.2 Support Plate	37210-3.2	0.12598	3.20	0307419
KA433SP-3.3 Support Plate	37210-3.3	0.12992	3.30	0307420
KA433SP-3.4 Support Plate	37210-3.4	0.13386	3.40	0080424
KA433SP-3.5 Support Plate	37210-3.5	0.13780	3.50	0080425
KA433SP-3.6 Support Plate	37210-3.6	0.14173	3.60	0307421
KA433SP-3.7 Support Plate	37210-3.7	0.14567	3.70	0307422
KA433SP-3.8 Support Plate	37210-3.8	0.14961	3.80	0307423
KA433SP-3.9 Support Plate	37210-3.9	0.15354	3.90	0307424
KA433SP-4.0 Support Plate	37210-4.0	0.15748	4.00	0307425
KA433SP-4.1 Support Plate	37210-4.1	0.16141	4.10	0307426
KA433SP-4.2 Support Plate	37210-4.2	0.16535	4.20	0307427
KA433SP-4.3 Support Plate	37210-4.3	0.16929	4.30	0307428
KA433SP-4.4 Support Plate	37210-4.4	0.17322	4.40	0307429
KA433SP-4.5 Support Plate	37210-4.5	0.17717	4.50	0307430

Continued on Next Page

Komax KA433 Series Blades



Used in the following Komax machines:

Alpha 355, 356, 358, 433, 455, 477, 488, 530, 550, 560, & 565 | Gamma 450 | Zeta & Omega Series



KA433 Support Plates (continued)

Mechtrix Description	Mechtrix Part Number	Blade Form Diameter		OEM Part Number
		(in)	(mm)	
KA433SP-4.6 Support Plate	37210-4.6	0.18110	4.60	0307431
KA433SP-4.7 Support Plate	37210-4.7	0.18504	4.70	0307432
KA433SP-4.8 Support Plate	37210-4.8	0.18898	4.80	0307433
KA433SP-4.9 Support Plate	37210-4.9	0.19291	4.90	0307434
KA433SP-5.0 Support Plate	37210-5.0	0.19685	5.00	0307435
KA433SP-5.1 Support Plate	37210-5.1	0.20079	5.10	0307436
KA433SP-5.2 Support Plate	37210-5.2	0.20472	5.20	0307437
KA433SP-5.3 Support Plate	37210-5.3	0.20866	5.30	0307438
KA433SP-5.4 Support Plate	37210-5.4	0.21260	5.40	0307439
KA433SP-5.5 Support Plate	37210-5.5	0.21654	5.50	0307440
KA433SP-5.6 Support Plate	37210-5.6	0.22047	5.60	0307441
KA433SP-5.7 Support Plate	37210-5.7	0.22441	5.70	0307442
KA433SP-5.8 Support Plate	37210-5.8	0.22835	5.80	0307443
KA433SP-5.9 Support Plate	37210-5.9	0.23228	5.90	0307444
KA433SP-6.0 Support Plate	37210-6.0	0.23622	6.00	0307445
KA433SP-6.1 Support Plate	37210-6.1	0.24016	6.10	0307446
KA433SP-6.2 Support Plate	37210-6.2	0.24409	6.20	0307447
KA433SP-6.3 Support Plate	37210-6.3	0.24803	6.30	0307448
KA433SP-6.4 Support Plate	37210-6.4	0.25197	6.40	0307449
KA433SP-6.5 Support Plate	37210-6.5	0.25591	6.50	0307450
KA433SP-6.6 Support Plate	37210-6.6	0.25984	6.60	0307451
KA433SP-6.7 Support Plate	37210-6.7	0.26378	6.70	0307452
KA433SP-6.8 Support Plate	37210-6.8	0.26772	6.80	0307453
KA433SP-6.9 Support Plate	37210-6.9	0.27165	6.90	0307454
KA433SP-7.0 Support Plate	37210-7.0	0.27559	7.00	0307455
KA433SP-7.1 Support Plate	37210-7.1	0.27953	7.10	0307456
KA433SP-7.2 Support Plate	37210-7.2	0.28346	7.20	0307457
KA433SP-7.3 Support Plate	37210-7.3	0.28740	7.30	0307458
KA433SP-7.4 Support Plate	37210-7.4	0.29134	7.40	0307459
KA433SP-7.5 Support Plate	37210-7.5	0.29528	7.50	0307460
KA433SP-7.6 Support Plate	37210-7.6	0.29921	7.60	0307461
KA433SP-7.7 Support Plate	37210-7.7	0.30315	7.70	0307462
KA433SP-7.8 Support Plate	37210-7.8	0.30709	7.80	0307463
KA433SP-7.9 Support Plate	37210-7.9	0.31102	7.90	0307464
KA433SP-8.0 Support Plate	37210-8.0	0.31496	8.00	0307465



KA433 Cyclonic-V® Blades

Patented **Mechtrix Cyclonic-V® Stripping Blades** are another innovative solution available for stripping the most difficult wire insulations in these machines. This stripping blade design offers more precise control of the depth of the cut into the insulation and improved centering of the wire in the stripping blades.

Please Contact Mechtrix for Assistance