

CS-327 Series Blades

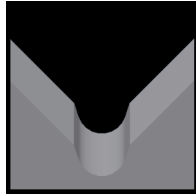
Used in the following Artos machines:

CS-327 | CS-370

Available CS-327 Blade Form Geometries Include:



Universal



M-Series®



Full-Radius



V-Style



Straight



Jacket



Multi-Conductor



Steel-Cut



Specialty



Mechtrix CS-327 Cut-off Blades (Standard)

Mechtrix Description	Mechtrix Part Number	Blade Form Diameter (in)	Blade Form Diameter (mm)	OEM Part Number
CS327CL-125 Cut-off Blade	29140	-	-	142336-125
CS327CL-060 Cut-off Blade	33516	-	-	142336-060

Mechtrix CS-327 Cut-off Blades (3-Blade Cutterhead)

Mechtrix Description	Mechtrix Part Number	Blade Form Diameter (in)	Blade Form Diameter (mm)	OEM Part Number
CS327CL-125 (3-Blade Cutterhead) Cut-off Blade	36117	-	-	142900-125
CS327CL-060 (3-Blade Cutterhead) Cut-off Blade	36204	-	-	142900-060



Mechtrix CS-327 M-Series® Blades

M-Series Blades are available in 0.1mm increments in the following sizes:

CS327M-0.4 through **CS327M-30.0**

CS-327 Series Blades

Used in the following Artos machines:

CS-327 | CS-370



Mechtrix CS-327 Radius Style Stripping Blades (30° Angle)

Mechtrix Description	Mechtrix Part Number	Blade Form (in)	Diameter (mm)	OEM Part Number
CS327-039D Strip Blade	28402-039	0.0390	1.00	142337-039
CS327-047D Strip Blade	28402-047	0.0470	1.20	142337-047
CS327-055D Strip Blade	28402-055	0.0550	1.40	142337-055
CS327-067D Strip Blade	28402-067	0.0670	1.70	142337-067
CS327-078D Strip Blade	28402-078	0.0780	2.00	142337-078
CS327-090D Strip Blade	28402-090	0.0900	2.29	142337-090
CS327-102D Strip Blade	28402-102	0.1020	2.60	142337-102
CS327-112D Strip Blade	28402-112	0.1120	2.84	142337-112
CS327-125D Strip Blade	28402-125	0.1250	3.18	142337-125
CS327-140D Strip Blade	28402-140	0.1400	3.56	142337-140
CS327-150D Strip Blade	28402-150	0.1500	3.81	142337-150
CS327-160D Strip Blade	28402-160	0.1600	4.06	142337-160
CS327-175D Strip Blade	28402-175	0.1750	4.45	142337-175
CS327-200D Strip Blade	28402-200	0.2000	5.08	142337-200
CS327-220D Strip Blade	28402-220	0.2200	5.59	142337-220
CS327-240D Strip Blade	28402-240	0.2400	6.10	142337-240
CS327-260D Strip Blade	28402-260	0.2600	6.60	142337-260
CS327-280D Strip Blade	28402-280	0.2800	7.11	142337-280
CS327-300D Strip Blade	28402-300	0.3000	7.62	142337-300
CS327-320D Strip Blade	28402-320	0.3200	8.13	142337-320
CS327-340D Strip Blade	28402-340	0.3400	8.64	142337-340
CS327-360D Strip Blade	28402-360	0.3600	9.14	142337-360
CS327-380D Strip Blade	28402-380	0.3800	9.65	142337-380
CS327-400D Strip Blade	28402-400	0.4000	10.16	142337-400
CS327-420D Strip Blade	28402-420	0.4200	10.67	142337-420
CS327-440D Strip Blade	28402-440	0.4400	11.18	142337-440
CS327-460D Strip Blade	28402-460	0.4600	11.68	142337-460
CS327-480D Strip Blade	28402-480	0.4800	12.19	142337-480
CS327-500D Strip Blade	28402-500	0.5000	12.70	142337-500
CS327-520D Strip Blade	28402-520	0.5200	13.21	142337-520
CS327-540D Strip Blade	28402-540	0.5400	13.72	142337-540
CS327-560D Strip Blade	28402-560	0.5600	14.22	142337-560
CS327-580D Strip Blade	28402-580	0.5800	14.73	142337-580
CS327-600D Strip Blade	28402-600	0.6000	15.24	142337-600
CS327-620D Strip Blade	28402-620	0.6200	15.75	142337-620
CS327-640D Strip Blade	28402-640	0.6400	16.26	142337-640
CS327-660D Strip Blade	28402-660	0.6600	16.76	142337-660
CS327-680D Strip Blade	28402-680	0.6800	17.27	142337-680
CS327-700D Strip Blade	28402-700	0.7000	17.78	142337-700
CS327-720D Strip Blade	28402-720	0.7200	18.29	142337-720



Artos CS-327 V-Style Blades

V-Style Blades are available for the CS-327 machines.

Please Contact Mechtrix for Assistance

CS-327 Series Blades

Used in the following Artos machines:

CS-327 | CS-370



Artos CS-327 Straight Blades

Mechtrix Description	Mechtrix Part Number	Blade Form (in)	Diameter (mm)	OEM Part Number
CS327SC-060 Straight Strip Blade	44844	-	-	-
CS327SC-125 Straight Strip Blade	44843	-	-	-



Artos CS-327 Jacket Blades

Jacket Blades are available for the CS-327 machines.

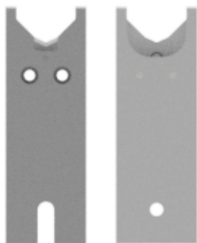
[Please Contact Mechtrix for Assistance](#)



Artos CS-327 Multi-Conductor Blades

Multi-Conductor Blades are available for the CS-327 machines.

[Please Contact Mechtrix for Assistance](#)



Artos CS-327 Steel-Cut Blades

Mechtrix Description	Mechtrix Part Number	Blade Form (in)	Diameter (mm)	OEM Part Number
CS327-SK Steel-Cut V-Blade Assembly	31604-500	-	-	0143217
CS327-SK Steel-Cut Shear Blade Assembly	31607-500	-	-	0142728
CS327-SK Steel-Cut Carbide Insert	31601	-	-	0143216
CS327-SK Steel-Cut Carbide Insert w/TiN Coating	31601-CT1	-	-	143216 TC



Artos CS-327 Specialty Blades

Specialty Blades are available for the CS-327 machines.

[Please Contact Mechtrix for Assistance](#)