

Mechtrix Tooling Catalog

PS-9550 Series Blades



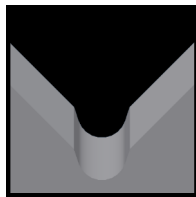
Used in the following *Schleuniger* machines:

PowerStrip 9550 S | PowerStrip 9550 M | PowerStrip 9550 SR | PowerStrip 9550 MR | PowerStrip 9680

Available Blades Include:



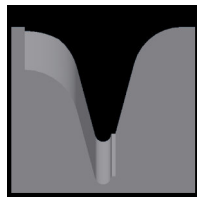
Universal



M-Series®



Full-Radius



Cyclonic-V®



Straight



Jacket



Multi-Conductor



Slitting



Steel-Cut



Specialty



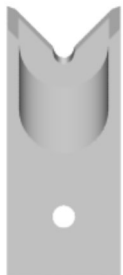
Schleuniger PS-9550 / PS-9580 Universal Blades (20mm)

Mechtrix Description	Mechtrix Part Number	Blade Form Diameter (in)	Blade Form Diameter (mm)	OEM Part Number
S9550UV-20 Universal Strip Blade	33599	-	-	419016



Schleuniger PS-9550 SR/MR Rotary Unit

Mechtrix Description	Mechtrix Part Number	Blade Form Diameter (in)	Blade Form Diameter (mm)	OEM Part Number
Schleuniger S9550-SR/MR Rotary Blade w/TiN-Carbide	33247-CT1	-	-	415075



Schleuniger PS-9550 / PS-9580 (20mm) M-Series® Blades

Mechtrix Description	Mechtrix Part Number	Blade Form Diameter (in)	Blade Form Diameter (mm)	OEM Part Number
S9550M-0.3-20 Strip Blade	44287	0.0118	0.3	-
S9550M-0.4-20 Strip Blade	44288	0.0158	0.4	-
S9550M-0.5-20 Strip Blade	44289	0.0197	0.5	-
S9550M-0.6-20 Strip Blade	44290	0.0236	0.6	-
S9550M-0.7-20 Strip Blade	44291	0.0276	0.7	-
S9550M-0.8-20 Strip Blade	44292	0.0315	0.8	-
S9550M-0.9-20 Strip Blade	44293	0.0354	0.9	-
S9550M-1.0-20 Strip Blade	44294	0.0394	1.0	-
S9550M-1.1-20 Strip Blade	44295	0.0433	1.1	-

Continued on Next Page

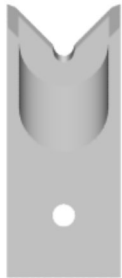
Mechtrix Tooling Catalog

PS-9550 Series Blades



Used in the following *Schleuniger* machines:

PowerStrip 9550 S | PowerStrip 9550 M | PowerStrip 9550 SR | PowerStrip 9550 MR | PowerStrip 9680



Schleuniger PS-9550 / PS-9580 (20mm) M-Series® Blades (continued)

Mechtrix Description	Mechtrix Part Number	Blade Form Diameter (in)	Diameter (mm)	OEM Part Number
S9550M-1.2-20 Strip Blade	44296	0.0472	1.2	-
S9550M-1.3-20 Strip Blade	44297	0.0512	1.3	-
S9550M-1.4-20 Strip Blade	44298	0.0551	1.4	-
S9550M-1.5-20 Strip Blade	44299	0.0591	1.5	-
S9550M-1.6-20 Strip Blade	44300	0.0630	1.6	-
S9550M-1.7-20 Strip Blade	44301	0.0669	1.7	-
S9550M-1.8-20 Strip Blade	44302	0.0709	1.8	-
S9550M-1.9-20 Strip Blade	44303	0.0748	1.9	-
S9550M-2.0-20 Strip Blade	44304	0.0787	2.0	-
S9550M-2.1-20 Strip Blade	44305	0.0827	2.1	-
S9550M-2.2-20 Strip Blade	44306	0.0866	2.2	-
S9550M-2.3-20 Strip Blade	44307	0.0906	2.3	-
S9550M-2.4-20 Strip Blade	44308	0.0945	2.4	-
S9550M-2.5-20 Strip Blade	44309	0.0984	2.5	-
S9550M-2.6-20 Strip Blade	44310	0.1024	2.6	-
S9550M-2.7-20 Strip Blade	34402	0.1063	2.7	-
S9550M-2.8-20 Strip Blade	34401	0.1102	2.8	-
S9550M-2.9-20 Strip Blade	44311	0.1142	2.9	-
S9550M-3.0-20 Strip Blade	34393	0.1181	3.0	-
S9550M-3.1-20 Strip Blade	44312	0.1221	3.1	-
S9550M-3.2-20 Strip Blade	44313	0.1260	3.2	-
S9550M-3.3-20 Strip Blade	44314	0.1299	3.3	-
S9550M-3.4-20 Strip Blade	44315	0.1339	3.4	-
S9550M-3.5-20 Strip Blade	44316	0.1378	3.5	-
S9550M-3.6-20 Strip Blade	34854	0.1417	3.6	-
S9550M-3.7-20 Strip Blade	44317	0.1457	3.7	-
S9550M-3.8-20 Strip Blade	34403	0.1496	3.8	-
S9550M-3.9-20 Strip Blade	44318	0.1535	3.9	-
S9550M-4.0-20 Strip Blade	36329	0.1575	4.0	-
S9550M-4.1-20 Strip Blade	34394	0.1614	4.1	-
S9550M-4.2-20 Strip Blade	44319	0.1654	4.2	-
S9550M-4.3-20 Strip Blade	44320	0.1693	4.3	-
S9550M-4.4-20 Strip Blade	44321	0.1732	4.4	-
S9550M-4.5-20 Strip Blade	36208	0.1772	4.5	-
S9550M-4.6-20 Strip Blade	44322	0.1811	4.6	-
S9550M-4.7-20 Strip Blade	44323	0.1850	4.7	-
S9550M-4.8-20 Strip Blade	34408	0.1890	4.8	-
S9550M-4.9-20 Strip Blade	44324	0.1929	4.9	-
S9550M-5.0-20 Strip Blade	34395	0.1969	5.0	-
S9550M-5.1-20 Strip Blade	44325	0.2008	5.1	-
S9550M-5.2-20 Strip Blade	44326	0.2047	5.2	-
S9550M-5.3-20 Strip Blade	44327	0.2087	5.3	-
S9550M-5.4-20 Strip Blade	44328	0.2126	5.4	-

Continued on Next Page

Mechtrix Corporation • W147 N9461 Held Drive, Menomonee Falls, WI 53051
Tel (262) 255-6555 • sales@mechtrix.com • Fax (262) 255-2628

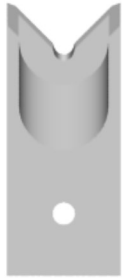
Mechtrix Tooling Catalog

PS-9550 Series Blades



Used in the following *Schleuniger* machines:

PowerStrip 9550 S | PowerStrip 9550 M | PowerStrip 9550 SR | PowerStrip 9550 MR | PowerStrip 9680



Schleuniger PS-9550 / PS-9580 (20mm) M-Series® Blades (continued)

Mechtrix Description	Mechtrix	Blade Form Diameter		OEM
	Part Number	(in)	(mm)	Part Number
S9550M-5.5-20 Strip Blade	44329	0.2165	5.5	-
S9550M-5.6-20 Strip Blade	36021	0.2205	5.6	-
S9550M-5.7-20 Strip Blade	34396	0.2244	5.7	-
S9550M-5.8-20 Strip Blade	34405	0.2284	5.8	-
S9550M-5.9-20 Strip Blade	44330	0.2323	5.9	-
S9550M-6.0-20 Strip Blade	36302	0.2362	6.0	-
S9550M-6.1-20 Strip Blade	34404	0.2402	6.1	-
S9550M-6.2-20 Strip Blade	44331	0.2441	6.2	-
S9550M-6.3-20 Strip Blade	34406	0.2480	6.3	-
S9550M-6.4-20 Strip Blade	34397	0.2520	6.4	-
S9550M-6.5-20 Strip Blade	44332	0.2559	6.5	-
S9550M-6.6-20 Strip Blade	44333	0.2598	6.6	-
S9550M-6.7-20 Strip Blade	44334	0.2638	6.7	-
S9550M-6.8-20 Strip Blade	34409	0.2677	6.8	-
S9550M-6.9-20 Strip Blade	34398	0.2717	6.9	-
S9550M-7.0-20 Strip Blade	33980	0.2756	7.0	-
S9550M-7.1-20 Strip Blade	44335	0.2795	7.1	-
S9550M-7.2-20 Strip Blade	34392	0.2835	7.2	-
S9550M-7.3-20 Strip Blade	44336	0.2874	7.3	-
S9550M-7.4-20 Strip Blade	44337	0.2913	7.4	-
S9550M-7.5-20 Strip Blade	44338	0.2953	7.5	-
S9550M-7.6-20 Strip Blade	34399	0.2992	7.6	-
S9550M-7.7-20 Strip Blade	34407	0.3032	7.7	-
S9550M-7.8-20 Strip Blade	44339	0.3071	7.8	-
S9550M-7.9-20 Strip Blade	44340	0.3110	7.9	-
S9550M-8.0-20 Strip Blade	44341	0.3150	8.0	-
S9550M-8.1-20 Strip Blade	44342	0.3189	8.1	-
S9550M-8.2-20 Strip Blade	34651	0.3228	8.2	-
S9550M-8.3-20 Strip Blade	44343	0.3268	8.3	-
S9550M-8.4-20 Strip Blade	44344	0.3307	8.4	-
S9550M-8.5-20 Strip Blade	34400	0.3346	8.5	-
S9550M-8.6-20 Strip Blade	44345	0.3386	8.6	-
S9550M-8.7-20 Strip Blade	34410	0.3425	8.7	-
S9550M-8.8-20 Strip Blade	36022	0.3465	8.8	-
S9550M-8.9-20 Strip Blade	36303	0.3504	8.9	-
S9550M-9.0-20 Strip Blade	36210	0.3543	9.0	-
S9550M-9.1-20 Strip Blade	44346	0.3583	9.1	-
S9550M-9.2-20 Strip Blade	44347	0.3622	9.2	-
S9550M-9.3-20 Strip Blade	44348	0.3661	9.3	-
S9550M-9.4-20 Strip Blade	44349	0.3701	9.4	-
S9550M-9.5-20 Strip Blade	39799	0.3740	9.5	-
S9550M-9.6-20 Strip Blade	44350	0.3780	9.6	-
S9550M-9.7-20 Strip Blade	44351	0.3819	9.7	-

Continued on Next Page

Mechtrix Corporation • W147 N9461 Held Drive, Menomonee Falls, WI 53051
Tel (262) 255-6555 • sales@mechtrix.com • Fax (262) 255-2628

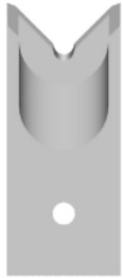
Mechtrix Tooling Catalog

PS-9550 Series Blades



Used in the following *Schleuniger* machines:

PowerStrip 9550 S | PowerStrip 9550 M | PowerStrip 9550 SR | PowerStrip 9550 MR | PowerStrip 9680



Schleuniger PS-9550 / PS-9580- (20mm) M-Series® Blades (continued)

Mechtrix Description	Mechtrix	Blade Form Diameter		OEM
	Part Number	(in)	(mm)	Part Number
S9550M-9.8-20 Strip Blade	44352	0.3858	9.8	-
S9550M-9.9-20 Strip Blade	44353	0.3898	9.9	-
S9550M-10.0-20 Strip Blade	44354	0.3937	10.0	-
S9550M-10.1-20 Strip Blade	35495	0.3976	10.1	-
S9550M-10.2-20 Strip Blade	44355	0.4016	10.2	-
S9550M-10.3-20 Strip Blade	44356	0.4055	10.3	-
S9550M-10.4-20 Strip Blade	44357	0.4094	10.4	-
S9550M-10.5-20 Strip Blade	39800	0.4134	10.5	-
S9550M-10.6-20 Strip Blade	44358	0.4173	10.6	-
S9550M-10.7-20 Strip Blade	36001	0.4213	10.7	-
S9550M-10.8-20 Strip Blade	44359	0.4252	10.8	-
S9550M-10.9-20 Strip Blade	44360	0.4291	10.9	-
S9550M-11.0-20 Strip Blade	44361	0.4331	11.0	-
S9550M-11.1-20 Strip Blade	44362	0.4370	11.1	-
S9550M-11.2-20 Strip Blade	44363	0.4409	11.2	-
S9550M-11.3-20 Strip Blade	44364	0.4449	11.3	-
S9550M-11.4-20 Strip Blade	44365	0.4488	11.4	-
S9550M-11.5-20 Strip Blade	44366	0.4528	11.5	-
S9550M-11.6-20 Strip Blade	44367	0.4567	11.6	-
S9550M-11.7-20 Strip Blade	44368	0.4606	11.7	-
S9550M-11.8-20 Strip Blade	35172	0.4646	11.8	-
S9550M-11.9-20 Strip Blade	44369	0.4685	11.9	-
S9550M-12.0-20 Strip Blade	44370	0.4724	12.0	-
S9550M-12.1-20 Strip Blade	44371	0.4764	12.1	-
S9550M-12.2-20 Strip Blade	44372	0.4803	12.2	-
S9550M-12.3-20 Strip Blade	44373	0.4843	12.3	-
S9550M-12.4-20 Strip Blade	44374	0.4882	12.4	-
S9550M-12.5-20 Strip Blade	44375	0.4921	12.5	-
S9550M-12.6-20 Strip Blade	44376	0.4961	12.6	-
S9550M-12.7-20 Strip Blade	44377	0.5000	12.7	-
S9550M-12.8-20 Strip Blade	44378	0.5039	12.8	-
S9550M-12.9-20 Strip Blade	44379	0.5079	12.9	-
S9550M-13.0-20 Strip Blade	37375	0.5118	13.0	-

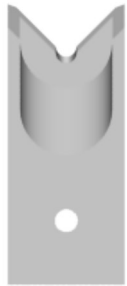
Mechtrix Tooling Catalog

PS-9550 Series Blades



Used in the following *Schleuniger* machines:

PowerStrip 9550 S | PowerStrip 9550 M | PowerStrip 9550 SR | PowerStrip 9550 MR | PowerStrip 9680



Schleuniger PS-9550 / PS-9580 (20mm) Full Radius Blades

Mechtrix Description	Mechtrix Part Number	Blade Form Diameter		OEM Part Number
		(in)	(mm)	
S9550-0.3D-20 Strip Blade	44380	0.0118	0.3	-
S9550-0.4D-20 Strip Blade	44381	0.0158	0.4	-
S9550-0.5D-20 Strip Blade	44382	0.0197	0.5	-
S9550-0.6D-20 Strip Blade	44383	0.0236	0.6	-
S9550-0.7D-20 Strip Blade	44384	0.0276	0.7	-
S9550-0.8D-20 Strip Blade	44385	0.0315	0.8	-
S9550-0.9D-20 Strip Blade	44386	0.0354	0.9	-
S9550-1.0D-20 Strip Blade	44387	0.0394	1.0	-
S9550-1.1D-20 Strip Blade	44388	0.0433	1.1	-
S9550-1.2D-20 Strip Blade	44389	0.0472	1.2	-
S9550-1.3D-20 Strip Blade	44390	0.0512	1.3	-
S9550-1.4D-20 Strip Blade	44391	0.0551	1.4	-
S9550-1.5D-20 Strip Blade	38075	0.0591	1.5	-
S9550-1.6D-20 Strip Blade	44392	0.0630	1.6	-
S9550-1.7D-20 Strip Blade	44393	0.0669	1.7	-
S9550-1.8D-20 Strip Blade	44394	0.0709	1.8	-
S9550-1.9D-20 Strip Blade	44395	0.0748	1.9	-
S9550-2.0D-20 Strip Blade	44396	0.0787	2.0	-
S9550-2.1D-20 Strip Blade	44397	0.0827	2.1	-
S9550-2.2D-20 Strip Blade	44398	0.0866	2.2	-
S9550-2.3D-20 Strip Blade	44399	0.0906	2.3	-
S9550-2.4D-20 Strip Blade	44400	0.0945	2.4	-
S9550-2.5D-20 Strip Blade	44401	0.0984	2.5	-
S9550-2.6D-20 Strip Blade	44402	0.1024	2.6	-
S9550-2.7D-20 Strip Blade	38000	0.1063	2.7	-
S9550-2.8D-20 Strip Blade	44403	0.1102	2.8	-
S9550-2.9D-20 Strip Blade	44404	0.1142	2.9	-
S9550-3.0D-20 Strip Blade	35075	0.1181	3.0	-
S9550-3.1D-20 Strip Blade	44405	0.1221	3.1	-
S9550-3.2D-20 Strip Blade	44406	0.1260	3.2	-
S9550-3.3D-20 Strip Blade	44407	0.1299	3.3	-
S9550-3.4D-20 Strip Blade	44408	0.1339	3.4	-
S9550-3.5D-20 Strip Blade	37029	0.1378	3.5	416081
S9550-3.6D-20 Strip Blade	44409	0.1417	3.6	-
S9550-3.7D-20 Strip Blade	44410	0.1457	3.7	-
S9550-3.8D-20 Strip Blade	37030	0.1496	3.8	-
S9550-3.9D-20 Strip Blade	44411	0.1535	3.9	-
S9550-4.0D-20 Strip Blade	37031	0.1575	4.0	416082
S9550-4.1D-20 Strip Blade	44412	0.1614	4.1	-
S9550-4.2D-20 Strip Blade	44413	0.1654	4.2	-
S9550-4.3D-20 Strip Blade	44414	0.1693	4.3	-
S9550-4.4D-20 Strip Blade	34097	0.1732	4.4	-
S9550-4.5D-20 Strip Blade	34873	0.1772	4.5	-

Continued on Next Page

Mechtrix Corporation • W147 N9461 Held Drive, Menomonee Falls, WI 53051
Tel (262) 255-6555 • sales@mechtrix.com • Fax (262) 255-2628

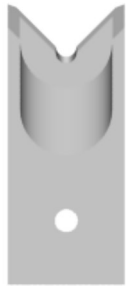
Mechtrix Tooling Catalog

PS-9550 Series Blades



Used in the following *Schleuniger* machines:

PowerStrip 9550 S | PowerStrip 9550 M | PowerStrip 9550 SR | PowerStrip 9550 MR | PowerStrip 9680



Schleuniger PS-9550 / PS-9580 (20mm) Full Radius Blades (continued)

Mechtrix Description	Mechtrix Part Number	Blade Form (in)	Diameter (mm)	OEM Part Number
S9550-4.6D-20 Strip Blade	44415	0.1811	4.6	-
S9550-4.7D-20 Strip Blade	44416	0.1850	4.7	-
S9550-4.8D-20 Strip Blade	37032	0.1890	4.8	-
S9550-4.9D-20 Strip Blade	44417	0.1929	4.9	-
S9550-5.0D-20 Strip Blade	34289	0.1969	5.0	416099
S9550-5.1D-20 Strip Blade	44418	0.2008	5.1	-
S9550-5.2D-20 Strip Blade	44419	0.2047	5.2	-
S9550-5.3D-20 Strip Blade	44420	0.2087	5.3	-
S9550-5.4D-20 Strip Blade	44421	0.2126	5.4	-
S9550-5.5D-20 Strip Blade	36859	0.2165	5.5	-
S9550-5.6D-20 Strip Blade	44422	0.2205	5.6	-
S9550-5.7D-20 Strip Blade	44423	0.2244	5.7	-
S9550-5.8D-20 Strip Blade	44424	0.2284	5.8	-
S9550-5.9D-20 Strip Blade	44425	0.2323	5.9	-
S9550-6.0D-20 Strip Blade	33740	0.2362	6.0	416065
S9550-6.1D-20 Strip Blade	44426	0.2402	6.1	-
S9550-6.2D-20 Strip Blade	36598	0.2441	6.2	-
S9550-6.3D-20 Strip Blade	44427	0.2480	6.3	-
S9550-6.4D-20 Strip Blade	44428	0.2520	6.4	-
S9550-6.5D-20 Strip Blade	34290	0.2559	6.5	416101
S9550-6.6D-20 Strip Blade	36767	0.2598	6.6	-
S9550-6.7D-20 Strip Blade	35076	0.2638	6.7	-
S9550-6.8D-20 Strip Blade	44429	0.2677	6.8	-
S9550-6.9D-20 Strip Blade	44430	0.2717	6.9	-
S9550-7.0D-20 Strip Blade	33741	0.2756	7.0	416066
S9550-7.1D-20 Strip Blade	44431	0.2795	7.1	-
S9550-7.2D-20 Strip Blade	44432	0.2835	7.2	-
S9550-7.3D-20 Strip Blade	44433	0.2874	7.3	-
S9550-7.4D-20 Strip Blade	44434	0.2913	7.4	-
S9550-7.5D-20 Strip Blade	37864	0.2953	7.5	-
S9550-7.6D-20 Strip Blade	44435	0.2992	7.6	-
S9550-7.7D-20 Strip Blade	44436	0.3031	7.7	-
S9550-7.8D-20 Strip Blade	44437	0.3071	7.8	-
S9550-7.9D-20 Strip Blade	44438	0.3110	7.9	-
S9550-8.0D-20 Strip Blade	33742	0.3150	8.0	416067
S9550-8.1D-20 Strip Blade	44439	0.3189	8.1	-
S9550-8.2D-20 Strip Blade	44440	0.3228	8.2	-
S9550-8.3D-20 Strip Blade	44441	0.3268	8.3	-
S9550-8.4D-20 Strip Blade	44442	0.3307	8.4	-
S9550-8.5D-20 Strip Blade	36858	0.3346	8.5	-
S9550-8.6D-20 Strip Blade	36390	0.3386	8.6	-
S9550-8.7D-20 Strip Blade	44443	0.3425	8.7	-

Continued on Next Page

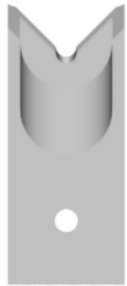
Mechtrix Tooling Catalog

PS-9550 Series Blades



Used in the following *Schleuniger* machines:

PowerStrip 9550 S | PowerStrip 9550 M | PowerStrip 9550 SR | PowerStrip 9550 MR | PowerStrip 9680



Schleuniger PS-9550 / PS-9580 (20mm) Full Radius Blades (continued)

Mechtrix Description	Mechtrix Part Number	Blade Form (in)	Diameter (mm)	OEM Part Number
S9550-8.8D-20 Strip Blade	44444	0.3465	8.8	-
S9550-8.9D-20 Strip Blade	44445	0.3504	8.9	-
S9550-9.0D-20 Strip Blade	33743	0.3543	9.0	416069
S9550-9.1D-20 Strip Blade	44446	0.3583	9.1	-
S9550-9.2D-20 Strip Blade	44447	0.3622	9.2	-
S9550-9.3D-20 Strip Blade	44448	0.3661	9.3	-
S9550-9.4D-20 Strip Blade	44449	0.3701	9.4	-
S9550-9.5D-20 Strip Blade	37865	0.3740	9.5	-
S9550-9.6D-20 Strip Blade	33922	0.3780	9.6	-
S9550-9.7D-20 Strip Blade	44450	0.3819	9.7	-
S9550-9.8D-20 Strip Blade	44451	0.3858	9.8	-
S9550-9.9D-20 Strip Blade	44452	0.3898	9.9	-
S9550-10.0D-20 Strip Blade	33744	0.3937	10.0	416072
S9550-10.1D-20 Strip Blade	44453	0.3976	10.1	-
S9550-10.2D-20 Strip Blade	44454	0.4016	10.2	-
S9550-10.3D-20 Strip Blade	44455	0.4055	10.3	-
S9550-10.4D-20 Strip Blade	44456	0.4094	10.4	-
S9550-10.5D-20 Strip Blade	34246	0.4134	10.5	-
S9550-10.6D-20 Strip Blade	44457	0.4173	10.6	-
S9550-10.7D-20 Strip Blade	44458	0.4213	10.7	-
S9550-10.8D-20 Strip Blade	44459	0.4252	10.8	-
S9550-10.9D-20 Strip Blade	44460	0.4291	10.9	-
S9550-11.0D-20 Strip Blade	33745	0.4331	11.0	416073
S9550-11.1D-20 Strip Blade	44461	0.4370	11.1	-
S9550-11.2D-20 Strip Blade	44462	0.4409	11.2	-
S9550-11.3D-20 Strip Blade	44463	0.4449	11.3	-
S9550-11.4D-20 Strip Blade	44464	0.4488	11.4	-
S9550-11.5D-20 Strip Blade	34247	0.4528	11.5	-
S9550-11.6D-20 Strip Blade	44465	0.4567	11.6	-
S9550-11.7D-20 Strip Blade	44466	0.4606	11.7	-
S9550-11.8D-20 Strip Blade	44467	0.4646	11.8	-
S9550-11.9D-20 Strip Blade	44468	0.4685	11.9	-
S9550-12.0D-20 Strip Blade	33746	0.4724	12.0	416074
S9550-12.1D-20 Strip Blade	44469	0.4764	12.1	-
S9550-12.2D-20 Strip Blade	44470	0.4803	12.2	-
S9550-12.3D-20 Strip Blade	44471	0.4843	12.3	-
S9550-12.4D-20 Strip Blade	44472	0.4882	12.4	-
S9550-12.5D-20 Strip Blade	34248	0.4921	12.5	-
S9550-12.6D-20 Strip Blade	44473	0.4961	12.6	-
S9550-12.7D-20 Strip Blade	44474	0.5000	12.7	-
S9550-12.8D-20 Strip Blade	44475	0.5039	12.8	-
S9550-12.9D-20 Strip Blade	44476	0.5079	12.9	-
S9550-13.0D-20 Strip Blade	33747	0.5118	13.0	416075

Mechtrix Corporation • W147 N9461 Held Drive, Menomonee Falls, WI 53051
Tel (262) 255-6555 • sales@mechtrix.com • Fax (262) 255-2628

Mechtrix Tooling Catalog

PS-9550 Series Blades



Used in the following *Schleuniger* machines:

PowerStrip 9550 S | PowerStrip 9550 M | PowerStrip 9550 SR | PowerStrip 9550 MR | PowerStrip 9680



PowerStrip 9550 / PS-9580 Cyclonic-V® Blades

Cyclonic-V® Blades are available for the PowerStrip 9550 machines.

[Please Contact Mechtrix for Assistance](#)



PowerStrip 9550 / PS-9580 Straight Blades

Mechtrix Description	Mechtrix Part Number	Blade Form (in)	Diameter (mm)	OEM Part Number
S9550-SC Straight Strip Blade	44830	-	-	419177



PowerStrip 9550 / PS-9580 Jacket Blades

Jacket Blades are available for the PowerStrip 9550 machines.

[Please Contact Mechtrix for Assistance](#)



PowerStrip 9550 / PS-9580 Multi-Conductor Blades

Multi-Conductor Blades are available for the PowerStrip 9550 machines.

[Please Contact Mechtrix for Assistance](#)



PowerStrip 9550 / PS-9580 Slitting Blades

Slitting Blades are available for the PowerStrip 9550 machines.

[Please Contact Mechtrix for Assistance](#)

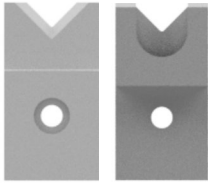
Mechtrix Tooling Catalog

PS-9550 Series Blades



Used in the following *Schleuniger* machines:

PowerStrip 9550 S | PowerStrip 9550 M | PowerStrip 9550 SR | PowerStrip 9550 MR | PowerStrip 9680



PowerStrip 9550 / PS-9580 Steel-Cut Blades

Mechtrix Description	Mechtrix Part Number	Blade Form (in)	Diameter (mm)	OEM Part Number
S9550 Steel-Cut V-Blade	44841	-	-	-
S9550 Steel-Cut Shear Blade	44842	-	-	-



PowerStrip 9550 / PS-9580 Specialty Blades

Specialty Blades are available for the PowerStrip 9550 machines.

Please Contact Mechtrix for Assistance