

Gamma 255 Series Blades

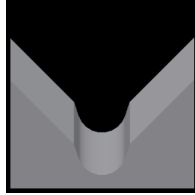
Used in the following Komax machines:

Gamma 252, 253, 255, & 263

Available Gamma 255 Blade Form Geometries Include:



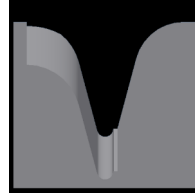
V-Style



M-Series®



Full-Radius



Cyclonic-V®



Gamma 255 Multi-V-Style Stripping Blades

Mechtrix Description	Mechtrix Part Number	Blade Form Diameter		OEM Part Number
		(in)	(mm)	
K255-R0.07 Strip Blade w/TiN Coating	29912-CT1	0.0055	0.14	0065331
K255-R0.10 Strip Blade w/TiN Coating	29913-CT1	0.0079	0.20	0065332
K255-R0.15 Strip Blade w/TiN Coating	33112-CT1	0.0118	0.30	0081843
K255-R0.20 Strip Blade w/TiN Coating	32745-CT1	0.0157	0.40	-
K255-R0.25 Strip Blade w/TiN Coating	28959-CT1	0.0197	0.50	0065333
K255-R0.35 Strip Blade w/TiN Coating	31198-CT1	0.0276	0.70	0325101
K255-R0.40 Strip Blade w/TiN Coating	33325-CT1	0.0315	0.80	-
K255-R0.50 Strip Blade w/TiN Coating	28921-CT1	0.0394	1.00	0065334
K255-R0.65 Strip Blade w/TiN Coating	31805-CT1	0.0512	1.30	-
K255-R0.75 Strip Blade w/TiN Coating	28998-CT1	0.0591	1.50	0065335
K255-R1.00 Strip Blade w/TiN Coating	29714-CT1	0.0787	2.00	0065336
K255-R1.50 Strip Blade w/TiN Coating	29715-CT1	0.1181	3.00	0320825
K255-R2.00 Strip Blade w/TiN Coating	36096-CT1	0.1575	4.00	0320826



Gamma 255 Multi-V-Style Stripping Blades w/0.1 Cut-off Form

Mechtrix Description	Mechtrix Part Number	Blade Form Diameter		OEM Part Number
		(in)	(mm)	
K255-R0.07/R0.1/R0.07 Strip Blade w/TiN Coating	38359-CT1	0.0055	0.14	-
K255-R0.10/R0.1/R0.10 Strip Blade w/TiN Coating	29913-CT1	0.0079	0.20	0065332
K255-R0.15/R0.1/R0.15 Strip Blade w/TiN Coating	38360-CT1	0.0118	0.30	-
K255-R0.20/R0.1/R0.20 Strip Blade w/TiN Coating	38361-CT1	0.0157	0.40	-
K255-R0.25/R0.1/R0.25 Strip Blade w/TiN Coating	38362-CT1	0.0197	0.50	0331835
K255-R0.35/R0.1/R0.35 Strip Blade w/TiN Coating	38363-CT1	0.0276	0.70	0332691
K255-R0.40/R0.1/R0.40 Strip Blade w/TiN Coating	38364-CT1	0.0315	0.80	-
K255-R0.50/R0.1/R0.50 Strip Blade w/TiN Coating	36963-CT1	0.0394	1.00	0332037
K255-R0.65/R0.1/R0.65 Strip Blade w/TiN Coating	38365-CT1	0.0512	1.30	-
K255-R0.75/R0.1/R0.75 Strip Blade w/TiN Coating	37775-CT1	0.0591	1.50	0332044
K255-R1.00/R0.1/R1.00 Strip Blade w/TiN Coating	36342-CT1	0.0787	2.00	0332046
K255-R1.50/R0.1/R1.50 Strip Blade w/TiN Coating	38366-CT1	0.1181	3.00	0332049
K255-R2.00/R0.1/R2.00 Strip Blade w/TiN Coating	38367-CT1	0.1575	4.00	0332050

Gamma 255 Series Blades

Used in the following Komax machines:

Gamma 252, 253, 255, & 263



Komax Gamma 255 M-Series® Blades

Mechtrix Description	Mechtrix	Blade Form Diameter		OEM
	Part Number	(in)	(mm)	Part Number
K255M-0.3 Strip Blade w/TiN Coating	38007-CT1	0.0118	0.3	-
K255M-0.4 Strip Blade w/TiN Coating	31448-CT1	0.0158	0.4	-
K255M-0.5 Strip Blade w/TiN Coating	30322-CT1	0.0197	0.5	-
K255M-0.6 Strip Blade w/TiN Coating	31326-CT1	0.0236	0.6	-
K255M-0.7 Strip Blade w/TiN Coating	31447-CT1	0.0276	0.7	-
K255M-0.8 Strip Blade w/TiN Coating	31389-CT1	0.0315	0.8	-
K255M-0.9 Strip Blade w/TiN Coating	32415-CT1	0.0354	0.9	-
K255M-1.0 Strip Blade w/TiN Coating	29699-CT1	0.0394	1.0	-
K255M-1.1 Strip Blade w/TiN Coating	32804-CT1	0.0433	1.1	-
K255M-1.2 Strip Blade w/TiN Coating	33265-CT1	0.0472	1.2	-
K255M-1.3 Strip Blade w/TiN Coating	31804-CT1	0.0512	1.3	-
K255M-1.4 Strip Blade w/TiN Coating	35797-CT1	0.0551	1.4	-
K255M-1.5 Strip Blade w/TiN Coating	34847-CT1	0.0591	1.5	-
K255M-1.6 Strip Blade w/TiN Coating	34682-CT1	0.0630	1.6	-
K255M-1.7 Strip Blade w/TiN Coating	35682-CT1	0.0669	1.7	-
K255M-1.8 Strip Blade w/TiN Coating	35072-CT1	0.0709	1.8	-
K255M-1.9 Strip Blade w/TiN Coating	34848-CT1	0.0748	1.9	-
K255M-2.0 Strip Blade w/TiN Coating	35650-CT1	0.0787	2.0	-
K255M-2.1 Strip Blade w/TiN Coating	35454-CT1	0.0827	2.1	-
K255M-2.2 Strip Blade w/TiN Coating	38368-CT1	0.0866	2.2	-
K255M-2.3 Strip Blade w/TiN Coating	38369-CT1	0.0906	2.3	-
K255M-2.4 Strip Blade w/TiN Coating	31703-CT1	0.0945	2.4	-
K255M-2.5 Strip Blade w/TiN Coating	38370-CT1	0.0984	2.5	-
K255M-2.6 Strip Blade w/TiN Coating	38371-CT1	0.1024	2.6	-
K255M-2.7 Strip Blade w/TiN Coating	38372-CT1	0.1063	2.7	-
K255M-2.8 Strip Blade w/TiN Coating	38373-CT1	0.1102	2.8	-
K255M-2.9 Strip Blade w/TiN Coating	35651-CT1	0.1142	2.9	-
K255M-3.0 Strip Blade w/TiN Coating	38374-CT1	0.1181	3.0	-

Gamma 255 Series Blades

Used in the following Komax machines:

Gamma 252, 253, 255, & 263



Komax Gamma 255 Full Radius Blades

Mechtrix Description	Mechtrix	Blade Form Diameter		OEM
	Part Number	(in)	(mm)	Part Number
K255-0.3D Strip Blade w/TiN Coating	38375-CT1	0.0118	0.3	-
K255-0.4D Strip Blade w/TiN Coating	38376-CT1	0.0158	0.4	310697
K255-0.5D Strip Blade w/TiN Coating	29700-CT1	0.0197	0.5	-
K255-0.6D Strip Blade w/TiN Coating	35273-CT1	0.0236	0.6	-
K255-0.7D Strip Blade w/TiN Coating	38377-CT1	0.0276	0.7	-
K255-0.8D Strip Blade w/TiN Coating	37791-CT1	0.0315	0.8	-
K255-0.9D Strip Blade w/TiN Coating	38378-CT1	0.0354	0.9	-
K255-1.0D Strip Blade w/TiN Coating	37793-CT1	0.0394	1.0	-
K255-1.1D Strip Blade w/TiN Coating	38379-CT1	0.0433	1.1	-
K255-1.2D Strip Blade w/TiN Coating	37794-CT1	0.0472	1.2	-
K255-1.3D Strip Blade w/TiN Coating	38380-CT1	0.0512	1.3	-
K255-1.4D Strip Blade w/TiN Coating	38381-CT1	0.0551	1.4	-
K255-1.5D Strip Blade w/TiN Coating	38382-CT1	0.0591	1.5	-
K255-1.6D Strip Blade w/TiN Coating	38383-CT1	0.0630	1.6	-
K255-1.7D Strip Blade w/TiN Coating	38384-CT1	0.0669	1.7	-
K255-1.8D Strip Blade w/TiN Coating	38385-CT1	0.0709	1.8	-
K255-1.9D Strip Blade w/TiN Coating	38356-CT1	0.0748	1.9	-
K255-2.0D Strip Blade w/TiN Coating	38387-CT1	0.0787	2.0	-
K255-2.1D Strip Blade w/TiN Coating	38388-CT1	0.0827	2.1	-
K255-2.2D Strip Blade w/TiN Coating	38389-CT1	0.0866	2.2	-
K255-2.3D Strip Blade w/TiN Coating	38390-CT1	0.0906	2.3	-
K255-2.4D Strip Blade w/TiN Coating	38391-CT1	0.0945	2.4	-
K255-2.5D Strip Blade w/TiN Coating	38392-CT1	0.0984	2.5	-
K255-2.6D Strip Blade w/TiN Coating	38393-CT1	0.1024	2.6	-
K255-2.7D Strip Blade w/TiN Coating	38394-CT1	0.1063	2.7	-
K255-2.8D Strip Blade w/TiN Coating	38395-CT1	0.1102	2.8	-
K255-2.9D Strip Blade w/TiN Coating	38396-CT1	0.1142	2.9	-
K255-3.0D Strip Blade w/TiN Coating	38397-CT1	0.1181	3.0	-



Gamma 255 Cyclonic-V® Blades

Patented **Mechtrix Cyclonic-V® Stripping Blades** are another innovative solution available for stripping the most difficult wire insulations in these machines. This stripping blade design offers more precise control of the depth of the cut into the insulation and improved centering of the wire in the stripping blades.

[Please Contact Mechtrix for Assistance](#)