

# Komax KA Series Blades

Used in the following Komax machines:

Alpha 411, 421, 422, & 432 | Gamma 311 & 333

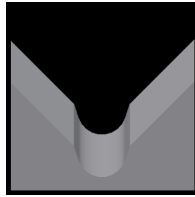
## Available KA Blade Form Geometries Include:



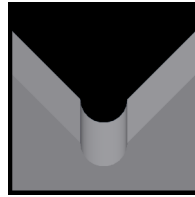
Universal



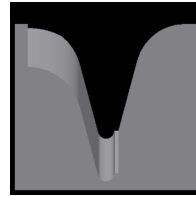
V-Style



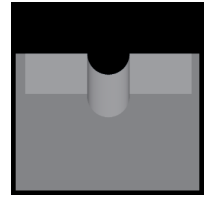
M-Series®



Full-Radius



Cyclonic-V®



Die-Type

## Komax KA and Gamma 311 & 333 Stripping Blades



Mechtrix Description	Mechtrix Part Number	Blade Form Diameter		OEM Part Number
		(in)	(mm)	
KA-0.1 Stripping Blade w/TiN Coating	15939-CT1	0.00787	0.20	0030299
KA-0.5 Stripping Blade w/TiN Coating	14944-CT1	0.03937	1.00	0033958
KA-0.75 Stripping Blade w/TiN Coating	14945-CT1	0.05906	1.50	0033959
KA-1.0 Stripping Blade w/TiN Coating	15800-CT1	0.07874	2.00	0033960
KA-1.5 Stripping Blade w/TiN Coating	15893-CT1	0.11811	3.00	0033961
KA-2.0 Stripping Blade w/TiN Coating	15894-CT1	0.15748	4.00	0033962
KA-0.5 (HD) Stripping Blade w/ Firex Coating	20773-CT5	0.03937	1.00	0041395
KA-0.75 (HD) Stripping Blade w/ Firex Coating	20774-CT5	0.05906	1.50	0041396
KA-1.0 (HD) Stripping Blade w/ Firex Coating	20775-CT5	0.07874	2.00	0041397
KA-1.5 (HD) Stripping Blade w/ Firex Coating	20776-CT5	0.11811	3.00	0041398
KA-2.0 (HD) Stripping Blade w/ Firex Coating	20777-CT5	0.15748	4.00	0041399

## Komax KA and Gamma 311 & 33 Cut-off Blades



Mechtrix Description	Mechtrix Part Number	Blade Form Diameter		OEM Part Number
		(in)	(mm)	
KA Lower Cut-Off Blade w/TiN Coating	14942-CT1	-	-	0037862
KA Upper Cut-Off Blade w/TiN Coating	14943-CT1	-	-	0030297
KA (HD) Cut-Off Lower w/TiN Coating	15957-CT1	-	-	0034645
KA (HD) Cut-Off Upper w/TiN Coating	15958-CT1	-	-	0034644
KA 4mm2 Cut-Off Lower w/TiN Coating	17855-CT1	-	-	0041596
KA 4mm2 Cut-Off Upper w/TiN Coating	17854-CT1	-	-	0041595
KA 6mm2 Cut-Off Lower w/Firex Coating	17853-CT5	-	-	0041557
KA 6mm2 Cut-Off Upper w/Firex Coating	17852-CT5	-	-	0041556
KA (DT) Cut-Off Upper w/TiN Coating	15542-CT1	-	-	0037943
KA (DT) 4mm2 Cut-Off Upper w/TiN Coating	23359-CT1	-	-	0041597
KA (DT) 6mm2 Cut-Off Upper w/Firex Coating	21760-CT5	-	-	0041558
KG Cut-Off Blade (VT1) Gamma 311	17884-CT1	-	-	0040966

# Komax KA Series Blades

Used in the following Komax machines:

Alpha 411, 421, 422, & 432 | Gamma 311 & 333



## Komax Alpha 411 M-Series® Blades

Mechtrix Description	Mechtrix Part Number	Blade Form Diameter		OEM Part Number
		(in)	(mm)	
KAM-0.3 Strip Blade w/TiN Coating	25841-CT1	0.0118	0.3	-
KAM-0.4 Strip Blade w/TiN Coating	21898-CT1	0.0158	0.4	-
KAM-0.5 Strip Blade w/TiN Coating	25989-CT1	0.0197	0.5	-
KAM-0.6 Strip Blade w/TiN Coating	27753-CT1	0.0236	0.6	-
KAM-0.7 Strip Blade w/TiN Coating	21166-CT1	0.0276	0.7	-
KAM-0.8 Strip Blade w/TiN Coating	24935-CT1	0.0315	0.8	-
KAM-0.9 Strip Blade w/TiN Coating	26359-CT1	0.0354	0.9	-
KAM-1.0 Strip Blade w/TiN Coating	19732-CT1	0.0394	1.0	-
KAM-1.1 Strip Blade w/TiN Coating	20207-CT1	0.0433	1.1	-
KAM-1.2 Strip Blade w/TiN Coating	19735-CT1	0.0472	1.2	-
KAM-1.3 Strip Blade w/TiN Coating	19597-CT1	0.0512	1.3	-
KAM-1.4 Strip Blade w/TiN Coating	19730-CT1	0.0551	1.4	-
KAM-1.5 Strip Blade w/TiN Coating	19847-CT1	0.0591	1.5	-
KAM-1.6 Strip Blade w/TiN Coating	19736-CT1	0.0630	1.6	-
KAM-1.7 Strip Blade w/TiN Coating	19996-CT1	0.0669	1.7	-
KAM-1.8 Strip Blade w/TiN Coating	25194-CT1	0.0709	1.8	-
KAM-1.9 Strip Blade w/TiN Coating	19731-CT1	0.0748	1.9	-
KAM-2.0 Strip Blade w/TiN Coating	27016-CT1	0.0787	2.0	-
KAM-2.1 Strip Blade w/TiN Coating	17485-CT1	0.0827	2.1	-
KAM-2.2 Strip Blade w/TiN Coating	26758-CT1	0.0866	2.2	-
KAM-2.3 Strip Blade w/TiN Coating	19738-CT1	0.0906	2.3	-
KAM-2.4 Strip Blade w/TiN Coating	27910-CT1	0.0945	2.4	-
KAM-2.5 Strip Blade w/TiN Coating	24241-CT1	0.0984	2.5	-
KAM-2.6 Strip Blade w/TiN Coating	17534-CT1	0.1024	2.6	-
KAM-2.7 Strip Blade w/TiN Coating	34103-CT1	0.1063	2.7	-
KAM-2.8 Strip Blade w/TiN Coating	26360-CT1	0.1102	2.8	-
KAM-2.9 Strip Blade w/TiN Coating	19737-CT1	0.1142	2.9	-
KAM-3.0 Strip Blade w/TiN Coating	22487-CT1	0.1181	3.0	-
KAM-3.1 Strip Blade w/TiN Coating	21489-CT1	0.1221	3.1	-
KAM-3.2 Strip Blade w/TiN Coating	32201-CT1	0.1260	3.2	-
KAM-3.3 Strip Blade w/TiN Coating	30351-CT1	0.1299	3.3	-
KAM-3.4 Strip Blade w/TiN Coating	29979-CT1	0.1339	3.4	-
KAM-3.5 Strip Blade w/TiN Coating	21399-CT1	0.1378	3.5	-
KAM-3.6 Strip Blade w/TiN Coating	24828-CT1	0.1417	3.6	-
KAM-3.7 Strip Blade w/TiN Coating	29259-CT1	0.1457	3.7	-
KAM-3.8 Strip Blade w/TiN Coating	27479-CT1	0.1496	3.8	-
KAM-3.9 Strip Blade w/TiN Coating	32070-CT1	0.1535	3.9	-
KAM-4.0 Strip Blade w/TiN Coating	25338-CT1	0.1575	4.0	-
KAM-4.1 Strip Blade w/TiN Coating	38104-CT1	0.1614	4.1	-
KAM-4.2 Strip Blade w/TiN Coating	38105-CT1	0.1654	4.2	-
KAM-4.3 Strip Blade w/TiN Coating	38106-CT1	0.1693	4.3	-
KAM-4.4 Strip Blade w/TiN Coating	38107-CT1	0.1732	4.4	-
KAM-4.5 Strip Blade w/TiN Coating	38108-CT1	0.1772	4.5	-
KAM-4.6 Strip Blade w/TiN Coating	35827-CT1	0.1811	4.6	-
KAM-4.7 Strip Blade w/TiN Coating	38109-CT1	0.1850	4.7	-
KAM-4.8 Strip Blade w/TiN Coating	38110-CT1	0.1890	4.8	-

# Komax KA Series Blades

Used in the following Komax machines:

Alpha 411, 421, 422, & 432 | Gamma 311 & 333



## Komax Alpha 411 Full Radius Blades

Mechtrix Description	Mechtrix	Blade Form Diameter		OEM
	Part Number	(in)	(mm)	Part Number
KA-0.4D Strip Blade w/TiN Coating	20901-CT1	0.0158	0.4	-
KA-0.5D Strip Blade w/TiN Coating	33941-CT1	0.0197	0.5	-
KA-0.6D Strip Blade w/TiN Coating	20328-CT1	0.0236	0.6	-
KA-0.7D Strip Blade w/TiN Coating	33942-CT1	0.0276	0.7	-
KA-0.8D Strip Blade w/TiN Coating	39328-CT1	0.0315	0.8	-
KA-0.9D Strip Blade w/TiN Coating	27514-CT1	0.0354	0.9	-
KA-1.0D Strip Blade w/TiN Coating	33943-CT1	0.0394	1.0	-
KA-1.1D Strip Blade w/TiN Coating	39329-CT1	0.0433	1.1	-
KA-1.2D Strip Blade w/TiN Coating	18498-CT1	0.0472	1.2	-
KA-1.3D Strip Blade w/TiN Coating	27032-CT1	0.0512	1.3	-
KA-1.4D Strip Blade w/TiN Coating	39330-CT1	0.0551	1.4	-
KA-1.5D Strip Blade w/TiN Coating	26142-CT1	0.0591	1.5	-
KA-1.6D Strip Blade w/TiN Coating	39331-CT1	0.0630	1.6	-
KA-1.7D Strip Blade w/TiN Coating	29019-CT1	0.0669	1.7	-
KA-1.8D Strip Blade w/TiN Coating	31945-CT1	0.0709	1.8	-
KA-1.9D Strip Blade w/TiN Coating	28433-CT1	0.0748	1.9	-
KA-2.0D Strip Blade w/TiN Coating	33944-CT1	0.0787	2.0	-
KA-2.1D Strip Blade w/TiN Coating	16698-CT1	0.0827	2.1	-
KA-2.2D Strip Blade w/TiN Coating	26759-CT1	0.0866	2.2	-
KA-2.3D Strip Blade w/TiN Coating	38132-CT1	0.0906	2.3	-
KA-2.4D Strip Blade w/TiN Coating	38133-CT1	0.0945	2.4	-
KA-2.5D Strip Blade w/TiN Coating	38134-CT1	0.0984	2.5	-
KA-2.6D Strip Blade w/TiN Coating	38135-CT1	0.1024	2.6	-
KA-2.7D Strip Blade w/TiN Coating	38136-CT1	0.1063	2.7	-
KA-2.8D Strip Blade w/TiN Coating	38137-CT1	0.1102	2.8	-
KA-2.9D Strip Blade w/TiN Coating	38138-CT1	0.1142	2.9	-
KA-3.0D Strip Blade w/TiN Coating	38139-CT1	0.1181	3.0	-
KA-3.1D Strip Blade w/TiN Coating	38140-CT1	0.1221	3.1	-
KA-3.2D Strip Blade w/TiN Coating	38141-CT1	0.1260	3.2	-
KA-3.3D Strip Blade w/TiN Coating	28050-CT1	0.1299	3.3	-
KA-3.4D Strip Blade w/TiN Coating	38142-CT1	0.1339	3.4	-
KA-3.5D Strip Blade w/TiN Coating	38143-CT1	0.1378	3.5	-
KA-3.6D Strip Blade w/TiN Coating	34816-CT1	0.1417	3.6	-
KA-3.7D Strip Blade w/TiN Coating	38144-CT1	0.1457	3.7	-
KA-3.8D Strip Blade w/TiN Coating	38145-CT1	0.1496	3.8	-
KA-3.9D Strip Blade w/TiN Coating	38146-CT1	0.1535	3.9	-
KA-4.0D Strip Blade w/TiN Coating	33981-CT1	0.1575	4.0	-
KA-4.1D Strip Blade w/TiN Coating	38147-CT1	0.1614	4.1	-
KA-4.2D Strip Blade w/TiN Coating	38148-CT1	0.1654	4.2	-
KA-4.3D Strip Blade w/TiN Coating	38149-CT1	0.1693	4.3	-
KA-4.4D Strip Blade w/TiN Coating	38150-CT1	0.1732	4.4	-
KA-4.5D Strip Blade w/TiN Coating	38151-CT1	0.1772	4.5	-
KA-4.6D Strip Blade w/TiN Coating	38152-CT1	0.1811	4.6	-
KA-4.7D Strip Blade w/TiN Coating	38153-CT1	0.1850	4.7	-
KA-4.8D Strip Blade w/TiN Coating	38154-CT1	0.1890	4.8	-
KA-4.9D Strip Blade w/TiN Coating	38155-CT1	0.1929	4.9	-

Continued on Next Page

# Komax KA Series Blades

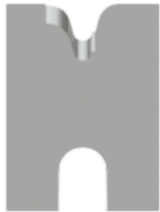
Used in the following Komax machines:

Alpha 411, 421, 422, & 432 | Gamma 311 & 333



## KA Full Radius Blades (continued)

Mechtrix Description	Mechtrix Part Number	Blade Form Diameter (in)	Blade Form Diameter (mm)	OEM Part Number
KA-5.0D Strip Blade w/TiN Coating	38156-CT1	0.1969	5.0	-
KA-5.1D Strip Blade w/TiN Coating	38157-CT1	0.2008	5.1	-
KA-5.2D Strip Blade w/TiN Coating	38158-CT1	0.2047	5.2	-
KA-5.3D Strip Blade w/TiN Coating	38159-CT1	0.2087	5.3	-
KA-5.4D Strip Blade w/TiN Coating	38160-CT1	0.2126	5.4	-
KA-5.5D Strip Blade w/TiN Coating	38161-CT1	0.2165	5.5	-
KA-5.6D Strip Blade w/TiN Coating	38162-CT1	0.2205	5.6	-
KA-5.7D Strip Blade w/TiN Coating	38163-CT1	0.2244	5.7	-
KA-5.8D Strip Blade w/TiN Coating	38164-CT1	0.2284	5.8	-
KA-5.9D Strip Blade w/TiN Coating	38165-CT1	0.2323	5.9	-
KA-6.0D Strip Blade w/TiN Coating	30003-CT1	0.2362	6.0	-
KA-6.1D Strip Blade w/TiN Coating	38166-CT1	0.2402	6.1	-
KA-6.2D Strip Blade w/TiN Coating	38167-CT1	0.2441	6.2	-
KA-6.3D Strip Blade w/TiN Coating	38168-CT1	0.2480	6.3	-
KA-6.4D Strip Blade w/TiN Coating	38169-CT1	0.2520	6.4	-
KA-6.5D Strip Blade w/TiN Coating	38170-CT1	0.2559	6.5	-
KA-6.6D Strip Blade w/TiN Coating	38171-CT1	0.2598	6.6	-
KA-6.7D Strip Blade w/TiN Coating	38172-CT1	0.2638	6.7	-
KA-6.8D Strip Blade w/TiN Coating	38173-CT1	0.2677	6.8	-
KA-6.9D Strip Blade w/TiN Coating	38174-CT1	0.2717	6.9	-
KA-7.0D Strip Blade w/TiN Coating	29925-CT1	0.2756	7.0	-



## KA Cyclonic-V® Blades

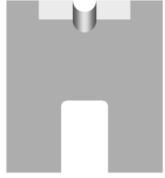
Patented **Mechtrix Cyclonic-V® Stripping Blades** are another innovative solution available for stripping the most difficult wire insulations in these machines. This stripping blade design offers more precise control of the depth of the cut into the insulation and improved centering of the wire in the stripping blades.

[Please Contact Mechtrix for Assistance](#)

# Komax KA Series Blades

Used in the following Komax machines:

Alpha 411, 421, 422, & 432 | Gamma 311 & 333



## "KD" Die-Type Stripping Blades

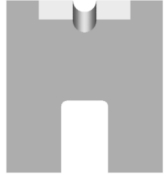
Mechtrix Description	Mechtrix Part Number	Blade Form Diameter (in)	Diameter (mm)	OEM Part Number
KD-0.25 Stripping Blade	05073	0.00984	0.25	0003034
KD-0.3 Stripping Blade	02332	0.01181	0.30	0003035
KD-0.35 Stripping Blade	08651	0.01339	0.35	0003036
KD-0.4 Stripping Blade	02333	0.01575	0.40	0003037
KD-0.45 Stripping Blade	18307	0.01772	0.45	0003038
KD-0.5 Stripping Blade	02334	0.01969	0.50	0003039
KD-0.55 Stripping Blade	18308	0.02165	0.55	0010641
KD-0.6 Stripping Blade	02335	0.02362	0.60	0003040
KD-0.65 Stripping Blade	18309	0.02559	0.65	0010642
KD-0.7 Stripping Blade	02336	0.02756	0.70	0003041
KD-0.75 Stripping Blade	18310	0.02953	0.75	0010643
KD-0.8 Stripping Blade	02337	0.03150	0.80	0003042
KD-0.85 Stripping Blade	17102	0.03346	0.85	0010644
KD-0.9 Stripping Blade	02338	0.03543	0.90	0003043
KD-0.95 Stripping Blade	16269	0.03740	0.95	0010645
KD-1.0 Stripping Blade	02339	0.03937	1.00	0003044
KD-1.05 Stripping Blade	18311	0.04134	1.05	0010646
KD-1.1 Stripping Blade	02340	0.04331	1.10	0003045
KD-1.15 Stripping Blade	14832	0.04528	1.15	0010647
KD-1.2 Stripping Blade	02341	0.04724	1.20	0003046
KD-1.25 Stripping Blade	17627	0.04921	1.25	0010648
KD-1.3 Stripping Blade	02342	0.05118	1.30	0003047
KD-1.35 Stripping Blade	10686	0.05315	1.35	0010649
KD-1.4 Stripping Blade	02343	0.05512	1.40	0003048
KD-1.45 Stripping Blade	15785	0.05709	1.45	0010650
KD-1.5 Stripping Blade	02344	0.05906	1.50	0003049
KD-1.55 Stripping Blade	17497	0.06102	1.55	0010651
KD-1.6 Stripping Blade	02345	0.06299	1.60	0003050
KD-1.65 Stripping Blade	18312	0.06496	1.65	0010652
KD-1.7 Stripping Blade	02346	0.06693	1.70	0003021
KD-1.75 Stripping Blade	18313	0.06890	1.75	0010653
KD-1.8 Stripping Blade	02347	0.07087	1.80	0003051
KD-1.85 Stripping Blade	18314	0.07283	1.85	0010654
KD-1.9 Stripping Blade	02348	0.07480	1.90	0003052
KD-1.95 Stripping Blade	18315	0.07677	1.95	0010655
KD-2.0 Stripping Blade	02349	0.07874	2.00	0003053
KD-2.1 Stripping Blade	02350	0.08268	2.10	0003054
KD-2.2 Stripping Blade	02351	0.08661	2.20	0003055
KD-2.3 Stripping Blade	02352	0.09055	2.30	0003056
KD-2.4 Stripping Blade	02353	0.09449	2.40	0003057
KD-2.5 Stripping Blade	02354	0.09843	2.50	0003058
KD-2.6 Stripping Blade	02355	0.10236	2.60	0003059
KD-2.7 Stripping Blade	02356	0.10630	2.70	0003060
KD-2.8 Stripping Blade	02357	0.11024	2.80	0003061
KD-2.9 Stripping Blade	02358	0.11417	2.90	0003062

Continued on Next Page

# Komax KA Series Blades

Used in the following Komax machines:

Alpha 411, 421, 422, & 432 | Gamma 311 & 333



## "KD" Die-Type Stripping Blades (continued)

Mechtrix Description	Mechtrix Part Number	Blade Form (in)	Diameter (mm)	OEM Part Number
KD-3.0 Stripping Blade	02359	0.11811	3.00	0003063
KD-3.1 Stripping Blade	07498	0.12205	3.10	0003064
KD-3.2 Stripping Blade	01831	0.12598	3.20	0003065
KD-3.3 Stripping Blade	04360	0.12992	3.30	0003066
KD-3.4 Stripping Blade	02651	0.13386	3.40	0003067
KD-3.5 Stripping Blade	04301	0.13780	3.50	0003068
KD-3.6 Stripping Blade	02652	0.14173	3.60	0003069
KD-3.7 Stripping Blade	07250	0.14567	3.70	0003070
KD-3.8 Stripping Blade	02653	0.14961	3.80	0003071
KD-3.9 Stripping Blade	05059	0.15354	3.90	0003072
KD-4.0 Stripping Blade	02654	0.15748	4.00	0003073
KD-4.1 Stripping Blade	05039	0.16141	4.10	0003074
KD-4.2 Stripping Blade	02655	0.16535	4.20	0003075
KD-4.3 Stripping Blade	05040	0.16929	4.30	0003076
KD-4.4 Stripping Blade	02656	0.17322	4.40	0003077
KD-4.5 Stripping Blade	06932	0.17717	4.50	0003078
KD-4.6 Stripping Blade	02657	0.18110	4.60	0003079
KD-4.7 Stripping Blade	04391	0.18504	4.70	0003080
KD-4.8 Stripping Blade	02658	0.18898	4.80	0003081
KD-4.9 Stripping Blade	05041	0.19291	4.90	0003082
KD-5.0 Stripping Blade	02659	0.19685	5.00	0003083
KD-5.1 Stripping Blade	05060	0.20079	5.10	0003084
KD-5.2 Stripping Blade	05081	0.20472	5.20	0003085
KD-5.3 Stripping Blade	04361	0.20866	5.30	0003086
KD-5.4 Stripping Blade	05061	0.21260	5.40	0003087
KD-5.5 Stripping Blade	04999	0.21654	5.50	0003088
KD-5.6 Stripping Blade	05062	0.22047	5.60	0003089
KD-5.7 Stripping Blade	05063	0.22441	5.70	0003090
KD-5.8 Stripping Blade	05064	0.22835	5.80	0003091
KD-5.9 Stripping Blade	05100	0.23228	5.90	0003092
KD-6.0 Stripping Blade	05034	0.23622	6.00	0003093
KD-6.1 Stripping Blade	05065	0.24016	6.10	0003094
KD-6.2 Stripping Blade	04494	0.24409	6.20	0003095
KD-6.3 Stripping Blade	05082	0.24803	6.30	0003096
KD-6.4 Stripping Blade	05083	0.25197	6.40	0003097
KD-6.5 Stripping Blade	05035	0.25591	6.50	0003098
KD-6.6 Stripping Blade	04362	0.25984	6.60	0003099
KD-6.7 Stripping Blade	08431	0.26378	6.70	0003100
KD-6.8 Stripping Blade	13058	0.26772	6.80	0003101
KD-6.9 Stripping Blade	13059	0.27165	6.90	0003102
KD-7.0 Stripping Blade	08796	0.27559	7.00	0003103
KD-7.1 Stripping Blade	07606	0.27953	7.10	0003104
KD-7.2 Stripping Blade	12096	0.28346	7.20	0003105
KD-7.3 Stripping Blade	18316	0.28740	7.30	0003106
KD-7.4 Stripping Blade	07784	0.29134	7.40	0003107

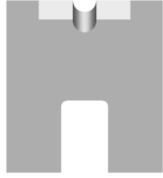
Continued on Next Page



# Komax KA Series Blades

Used in the following Komax machines:

Alpha 411, 421, 422, & 432 | Gamma 311 & 333



## "KD" Die-Type Stripping Blades (continued)

Mechtrix Description	Mechtrix Part Number	Blade Form (in)	Diameter (mm)	OEM Part Number
KD-7.5 Stripping Blade	07607	0.29528	7.50	0003108
KD-7.6 Stripping Blade	16844	0.29921	7.60	0003109
KD-7.7 Stripping Blade	18317	0.30315	7.70	0003110
KD-7.8 Stripping Blade	18318	0.30709	7.80	0003111
KD-7.9 Stripping Blade	18319	0.31102	7.90	0003112
KD-8.0 Stripping Blade	08416	0.31496	8.00	0003113
KD-8.1 Stripping Blade	18320	0.31890	8.10	0003114
KD-8.2 Stripping Blade	18321	0.32283	8.20	0003115
KD-8.3 Stripping Blade	18322	0.32677	8.30	0003116
KD-8.4 Stripping Blade	18323	0.33071	8.40	0003117
KD-8.5 Stripping Blade	08415	0.33465	8.50	0003118
KD-8.6 Stripping Blade	18324	0.33858	8.60	0003119
KD-8.7 Stripping Blade	18325	0.34252	8.70	0003120
KD-8.8 Stripping Blade	18326	0.34646	8.80	0003121
KD-8.9 Stripping Blade	19434	0.35039	8.90	0003122
KD-9.0 Stripping Blade	08414	0.35433	9.00	0003123
KD-9.1 Stripping Blade	18328	0.35827	9.10	0003124
KD-9.2 Stripping Blade	18329	0.36220	9.20	0003125
KD-9.3 Stripping Blade	08797	0.36614	9.30	0003126
KD-9.4 Stripping Blade	18330	0.37008	9.40	0003127
KD-9.5 Stripping Blade	18331	0.37402	9.50	0003128
KD-9.6 Stripping Blade	18332	0.37795	9.60	0003129
KD-9.7 Stripping Blade	18333	0.38189	9.70	0003130
KD-9.8 Stripping Blade	18334	0.38583	9.80	0003131
KD-9.9 Stripping Blade	18335	0.38976	9.90	0003132
KD-10.0 Stripping Blade	18336	0.39370	10.00	0003133



## "KDG" Wire Guides

Mechtrix Description	Mechtrix Part Number	Guide Form (in)	Diameter (mm)	OEM Part Number
KDG-0.5 Wire Guide	02559	0.01969	0.50	0003134
KDG-0.6 Wire Guide	02560	0.02362	0.60	0003135
KDG-0.7 Wire Guide	02561	0.02756	0.70	0003136
KDG-0.8 Wire Guide	02562	0.03150	0.80	0003137
KDG-0.9 Wire Guide	02563	0.03543	0.90	0003138
KDG-1.0 Wire Guide	02564	0.03937	1.00	0003139
KDG-1.1 Wire Guide	02565	0.04331	1.10	0003140
KDG-1.2 Wire Guide	02566	0.04724	1.20	0003141
KDG-1.3 Wire Guide	02567	0.05118	1.30	0003142
KDG-1.4 Wire Guide	02568	0.05512	1.40	0003143
KDG-1.5 Wire Guide	02569	0.05906	1.50	0003144

Continued on Next Page

# Komax KA Series Blades

Used in the following Komax machines:

Alpha 411, 421, 422, & 432 | Gamma 311 & 333



## “KDG” Wire Guides (continued)

Mechtrix Description	Mechtrix Part Number	Guide Form Diameter (in)	Guide Form Diameter (mm)	OEM Part Number
KDG-1.6 Wire Guide	02570	0.06299	1.60	0003145
KDG-1.7 Wire Guide	02571	0.06693	1.70	0003146
KDG-1.8 Wire Guide	02572	0.07087	1.80	0003147
KDG-1.9 Wire Guide	02573	0.07480	1.90	0003148
KDG-2.0 Wire Guide	02574	0.07874	2.00	0003149
KDG-2.1 Wire Guide	02575	0.08268	2.10	0003150
KDG-2.2 Wire Guide	02576	0.08661	2.20	0003151
KDG-2.3 Wire Guide	02577	0.09055	2.30	0003152
KDG-2.4 Wire Guide	02578	0.09449	2.40	0003153
KDG-2.5 Wire Guide	02579	0.09843	2.50	0003154
KDG-2.6 Wire Guide	02580	0.10236	2.60	0003155
KDG-2.7 Wire Guide	02581	0.10630	2.70	0003023
KDG-2.8 Wire Guide	02582	0.11024	2.80	0003156
KDG-2.9 Wire Guide	02583	0.11417	2.90	0003157
KDG-3.0 Wire Guide	02584	0.11811	3.00	0003158
KDG-3.1 Wire Guide	07408	0.12205	3.10	0003159
KDG-3.2 Wire Guide	02585	0.12598	3.20	0003160
KDG-3.3 Wire Guide	06823	0.12992	3.30	0003161
KDG-3.4 Wire Guide	02586	0.13386	3.40	0003162
KDG-3.5 Wire Guide	06824	0.13780	3.50	0003163
KDG-3.6 Wire Guide	02587	0.14173	3.60	0003164
KDG-3.7 Wire Guide	04989	0.14567	3.70	0003165
KDG-3.8 Wire Guide	02588	0.14961	3.80	0003166
KDG-3.9 Wire Guide	04294	0.15354	3.90	0003167
KDG-4.0 Wire Guide	02589	0.15748	4.00	0003168
KDG-4.1 Wire Guide	12125	0.16141	4.10	0003169
KDG-4.2 Wire Guide	02590	0.16535	4.20	0003170
KDG-4.3 Wire Guide	05066	0.16929	4.30	0003171
KDG-4.4 Wire Guide	02591	0.17322	4.40	0003172
KDG-4.5 Wire Guide	04295	0.17717	4.50	0003173
KDG-4.6 Wire Guide	02592	0.18110	4.60	0003174
KDG-4.7 Wire Guide	08397	0.18504	4.70	0003175
KDG-4.8 Wire Guide	02593	0.18898	4.80	0003176
KDG-4.9 Wire Guide	04674	0.19291	4.90	0003177
KDG-5.0 Wire Guide	02594	0.19685	5.00	0003178
KDG-5.1 Wire Guide	04358	0.20079	5.10	0003179
KDG-5.2 Wire Guide	02660	0.20472	5.20	0003180
KDG-5.3 Wire Guide	07456	0.20866	5.30	0003181
KDG-5.4 Wire Guide	02661	0.21260	5.40	0003182
KDG-5.5 Wire Guide	04296	0.21654	5.50	0003183
KDG-5.6 Wire Guide	02662	0.22047	5.60	0003184
KDG-5.7 Wire Guide	07601	0.22441	5.70	0003185
KDG-5.8 Wire Guide	02663	0.22835	5.80	0003186
KDG-5.9 Wire Guide	12126	0.23228	5.90	0003187

Continued on Next Page



# Komax KA Series Blades

Used in the following Komax machines:

Alpha 411, 421, 422, & 432 | Gamma 311 & 333



## “KDG” Wire Guides (continued)

Mechtrix Description	Mechtrix Part Number	Guide Form Diameter (in)	Guide Form Diameter (mm)	OEM Part Number
KDG-6.0 Wire Guide	02664	0.23622	6.00	0003188
KDG-6.1 Wire Guide	07524	0.24016	6.10	0003189
KDG-6.2 Wire Guide	03067	0.24409	6.20	0003190
KDG-6.3 Wire Guide	10787	0.24803	6.30	0003191
KDG-6.4 Wire Guide	03068	0.25197	6.40	0003192
KDG-6.5 Wire Guide	05071	0.25591	6.50	0003193
KDG-6.6 Wire Guide	03069	0.25984	6.60	0003194
KDG-6.7 Wire Guide	12238	0.26378	6.70	0003195
KDG-6.8 Wire Guide	04527	0.26772	6.80	0003196
KDG-6.9 Wire Guide	13342	0.27165	6.90	0003197
KDG-7.0 Wire Guide	08794	0.27559	7.00	0003198
KDG-7.1 Wire Guide	11706	0.27953	7.10	0003199
KDG-7.2 Wire Guide	13561	0.28346	7.20	0003200
KDG-7.3 Wire Guide	05067	0.28740	7.30	0003201
KDG-7.4 Wire Guide	16538	0.29134	7.40	0003202
KDG-7.5 Wire Guide	17999	0.29528	7.50	0003203
KDG-7.6 Wire Guide	07409	0.29921	7.60	0003204
KDG-7.7 Wire Guide	07410	0.30315	7.70	0003205
KDG-7.8 Wire Guide	07785	0.30709	7.80	0003206
KDG-7.9 Wire Guide	07403	0.31102	7.90	0003207
KDG-8.0 Wire Guide	09283	0.31496	8.00	0003208
KDG-8.1 Wire Guide	12881	0.31890	8.10	0003209
KDG-8.2 Wire Guide	04359	0.32283	8.20	0003210
KDG-8.3 Wire Guide	12747	0.32677	8.30	0003211
KDG-8.4 Wire Guide	08334	0.33071	8.40	0003212
KDG-8.5 Wire Guide	04495	0.33465	8.50	0003213
KDG-8.6 Wire Guide	16482	0.33858	8.60	0003214
KDG-8.7 Wire Guide	08430	0.34252	8.70	0003215
KDG-8.8 Wire Guide	16845	0.34646	8.80	0003216
KDG-8.9 Wire Guide	15964	0.35039	8.90	0003217
KDG-9.0 Wire Guide	13666	0.35433	9.00	0003218
KDG-9.1 Wire Guide	21384	0.35827	9.10	0003219
KDG-9.2 Wire Guide	17780	0.36220	9.20	0003220
KDG-9.3 Wire Guide	17781	0.36614	9.30	0003221
KDG-9.4 Wire Guide	14245	0.37008	9.40	0003222
KDG-9.5 Wire Guide	17783	0.37402	9.50	0003223
KDG-9.6 Wire Guide	17784	0.37795	9.60	0003224
KDG-9.7 Wire Guide	12239	0.38189	9.70	0003225
KDG-9.8 Wire Guide	17786	0.38583	9.80	0003226
KDG-9.9 Wire Guide	17787	0.38976	9.90	0003227
KDG-10.0 Wire Guide	08430	0.39370	10.00	0003228