

UniStrip 2550 Series Blades

Used in the following *Schleuniger* machines:

UniStrip 2550

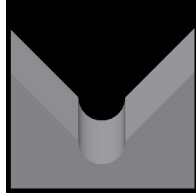
Available UniStrip 2550 Blade Form Geometries Include:



Universal



M-Series®



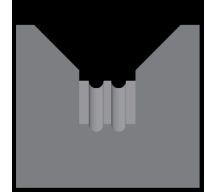
Full-Radius



Cyclonic-V®



Die-Type



Multi-Conductor



Schleuniger US-2550 Universal Blades

Mechtrix Description	Mechtrix Part Number	Blade Form Diameter		OEM Part Number
		(in)	(mm)	
Schleuniger S2550-UV Universal Strip Blade	34254	-	-	421540



Schleuniger US-2550 M-Series® Blades

Mechtrix Description	Mechtrix Part Number	Blade Form Diameter		OEM Part Number
		(in)	(mm)	
S2550M-0.3 Strip Blade	41748	0.0118	0.3	-
S2550M-0.4 Strip Blade	36607	0.0158	0.4	-
S2550M-0.5 Strip Blade	37330	0.0197	0.5	-
S2550M-0.6 Strip Blade	36608	0.0236	0.6	-
S2550M-0.7 Strip Blade	37334	0.0276	0.7	-
S2550M-0.8 Strip Blade	37338	0.0315	0.8	-
S2550M-0.9 Strip Blade	37342	0.0354	0.9	-
S2550M-1.0 Strip Blade	41749	0.0394	1.0	-
S2550M-1.1 Strip Blade	41750	0.0433	1.1	-
S2550M-1.2 Strip Blade	41751	0.0472	1.2	-
S2550M-1.3 Strip Blade	41752	0.0512	1.3	-
S2550M-1.4 Strip Blade	41753	0.0551	1.4	-
S2550M-1.5 Strip Blade	41754	0.0591	1.5	-
S2550M-1.6 Strip Blade	41755	0.0630	1.6	-
S2550M-1.7 Strip Blade	41756	0.0669	1.7	-
S2550M-1.8 Strip Blade	36556	0.0709	1.8	-
S2550M-1.9 Strip Blade	41757	0.0748	1.9	-
S2550M-2.0 Strip Blade	41758	0.0787	2.0	-
S2550M-2.1 Strip Blade	41759	0.0827	2.1	-
S2550M-2.2 Strip Blade	41760	0.0866	2.2	-
S2550M-2.3 Strip Blade	41761	0.0906	2.3	-
S2550M-2.4 Strip Blade	36604	0.0945	2.4	-
S2550M-2.5 Strip Blade	41762	0.0984	2.5	-
S2550M-2.6 Strip Blade	41763	0.1024	2.6	-
S2550M-2.7 Strip Blade	41764	0.1063	2.7	-
S2550M-2.8 Strip Blade	41765	0.1102	2.8	-
S2550M-2.9 Strip Blade	41766	0.1142	2.9	-
S2550M-3.0 Strip Blade	41767	0.1181	3.0	-
S2550M-3.1 Strip Blade	41768	0.1221	3.1	-
S2550M-3.2 Strip Blade	41769	0.1260	3.2	-

Continued on Next Page

UniStrip 2550 Series Blades

Used in the following *Schleuniger* machines:

UniStrip 2550



Schleuniger US-2550 M-Series® Blades (continued)

Mechtrix Description	Mechtrix Part Number	Blade Form Diameter		OEM Part Number
		(in)	(mm)	
S2550M-3.3 Strip Blade	36135	0.1299	3.3	-
S2550M-3.4 Strip Blade	41770	0.1339	3.4	-
S2550M-3.5 Strip Blade	41771	0.1378	3.5	-
S2550M-3.6 Strip Blade	41772	0.1417	3.6	-
S2550M-3.7 Strip Blade	36420	0.1457	3.7	-



Schleuniger US-2550 Full Radius Blades

Mechtrix Description	Mechtrix Part Number	Blade Form Diameter		OEM Part Number
		(in)	(mm)	
S2550-0.3D Strip Blade	41773	0.0118	0.3	-
S2550-0.4D Strip Blade	41774	0.0158	0.4	-
S2550-0.5D Strip Blade	37331	0.0197	0.5	-
S2550-0.6D Strip Blade	41775	0.0236	0.6	-
S2550-0.7D Strip Blade	37335	0.0276	0.7	-
S2550-0.8D Strip Blade	37339	0.0315	0.8	-
S2550-0.9D Strip Blade	37343	0.0354	0.9	-
S2550-1.0D Strip Blade	34657	0.0394	1.0	421505
S2550-1.1D Strip Blade	41776	0.0433	1.1	-
S2550-1.2D Strip Blade	41777	0.0472	1.2	-
S2550-1.3D Strip Blade	41778	0.0512	1.3	-
S2550-1.4D Strip Blade	41779	0.0551	1.4	-
S2550-1.5D Strip Blade	35930	0.0591	1.5	-
S2550-1.6D Strip Blade	37136	0.0630	1.6	-
S2550-1.7D Strip Blade	37137	0.0669	1.7	-
S2550-1.8D Strip Blade	41780	0.0709	1.8	-
S2550-1.9D Strip Blade	41781	0.0748	1.9	-
S2550-2.0D Strip Blade	41782	0.0787	2.0	-
S2550-2.1D Strip Blade	41783	0.0827	2.1	-
S2550-2.2D Strip Blade	41784	0.0866	2.2	-
S2550-2.3D Strip Blade	41785	0.0906	2.3	-
S2550-2.4D Strip Blade	41786	0.0945	2.4	-
S2550-2.5D Strip Blade	41787	0.0984	2.5	-
S2550-2.6D Strip Blade	41788	0.1024	2.6	-
S2550-2.7D Strip Blade	41789	0.1063	2.7	-
S2550-2.8D Strip Blade	41790	0.1102	2.8	-
S2550-2.9D Strip Blade	41791	0.1142	2.9	-
S2550-3.0D Strip Blade	41792	0.1181	3.0	-
S2550-3.1D Strip Blade	41793	0.1221	3.1	-
S2550-3.2D Strip Blade	41794	0.1260	3.2	-
S2550-3.3D Strip Blade	41795	0.1299	3.3	-
S2550-3.4D Strip Blade	41796	0.1339	3.4	-
S2550-3.5D Strip Blade	41797	0.1378	3.5	-
S2550-3.6D Strip Blade	41798	0.1417	3.6	-
S2550-3.7D Strip Blade	41799	0.1457	3.7	-

UniStrip 2550 Series Blades

Used in the following *Schleuniger* machines:

UniStrip 2550



Schleuniger US-2550 Cyclonic-V® Blades

Patented **Mechtrix Cyclonic-V® Stripping Blades** are another innovative solution available for stripping the most difficult wire insulations in these machines. This stripping blade design offers more precise control of the depth of the cut into the insulation and improved centering of the wire in the stripping blades.

[Please Contact Mechtrix for Assistance](#)



Schleuniger US-2550 Die-Type Blades

Die-Type Blades are available in 0.1mm increments in the following sizes:

S2550D-0.4 thru **S2550D-7.0**



Schleuniger US-2550 Multi-Conductor Blades

Multi-Conductor Blades are available for the UniStrip 2550 machines.

[Please Contact Mechtrix for Assistance](#)