

UniStrip 2500 Series Blades

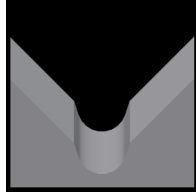
Used in the following *Schleuniger* machines:

UniStrip 2500

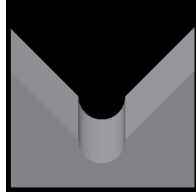
Available UniStrip 2500 Blade Form Geometries Include:



Universal



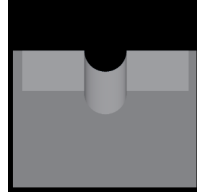
M-Series®



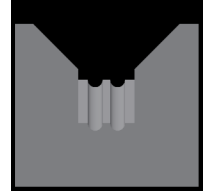
Full-Radius



Cyclonic-V®



Die-Type

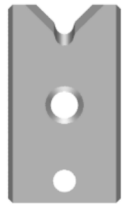


Multi-Conductor



Schleuniger US-2500 Universal Blades

Mechtrix Description	Mechtrix Part Number	Blade Form Diameter		OEM Part Number
		(in)	(mm)	
Schleuniger US-2500 Universal Blade - Tool Steel	13421	-	-	D4-1300 or USP-1300



Schleuniger US-2500 M-Series® Blades

Mechtrix Description	Mechtrix Part Number	Blade Form Diameter		OEM Part Number
		(in)	(mm)	
S25M-0.3 Strip Blade	41666	0.0118	0.3	-
S25M-0.4 Strip Blade	25809	0.0158	0.4	-
S25M-0.5 Strip Blade	14658	0.0197	0.5	-
S25M-0.6 Strip Blade	26047	0.0236	0.6	-
S25M-0.7 Strip Blade	14657	0.0276	0.7	-
S25M-0.8 Strip Blade	21874	0.0315	0.8	-
S25M-0.9 Strip Blade	21873	0.0354	0.9	-
S25M-1.0 Strip Blade	21875	0.0394	1.0	-
S25M-1.1 Strip Blade	21877	0.0433	1.1	-
S25M-1.2 Strip Blade	22488	0.0472	1.2	-
S25M-1.3 Strip Blade	25150	0.0512	1.3	-
S25M-1.4 Strip Blade	21871	0.0551	1.4	-
S25M-1.5 Strip Blade	15947	0.0591	1.5	-
S25M-1.6 Strip Blade	32406	0.0630	1.6	-
S25M-1.7 Strip Blade	41667	0.0669	1.7	-
S25M-1.8 Strip Blade	19073	0.0709	1.8	-
S25M-1.9 Strip Blade	41668	0.0748	1.9	-
S25M-2.0 Strip Blade	22465	0.0787	2.0	-
S25M-2.1 Strip Blade	41669	0.0827	2.1	-
S25M-2.2 Strip Blade	41670	0.0866	2.2	-
S25M-2.3 Strip Blade	21872	0.0906	2.3	-
S25M-2.4 Strip Blade	21878	0.0945	2.4	-
S25M-2.5 Strip Blade	41671	0.0984	2.5	-
S25M-2.6 Strip Blade	32130	0.1024	2.6	-
S25M-2.7 Strip Blade	26906	0.1063	2.7	-
S25M-2.8 Strip Blade	34938	0.1102	2.8	-
S25M-2.9 Strip Blade	20575	0.1142	2.9	-
S25M-3.0 Strip Blade	22932	0.1181	3.0	-
S25M-3.1 Strip Blade	32131	0.1221	3.1	-
S25M-3.2 Strip Blade	21876	0.1260	3.2	-
S25M-3.3 Strip Blade	25589	0.1299	3.3	-

Continued on Next Page

UniStrip 2500 Series Blades

Used in the following *Schleuniger* machines:

UniStrip 2500



Schleuniger US-2500 M-Series® Blades (continued)

Mechtrix Description	Mechtrix Part Number	Blade Form (in)	Diameter (mm)	OEM Part Number
S25M-3.4 Strip Blade	17274	0.1339	3.4	-
S25M-3.5 Strip Blade	28888	0.1378	3.5	-
S25M-3.6 Strip Blade	41672	0.1417	3.6	-
S25M-3.7 Strip Blade	17540	0.1457	3.7	-
S25M-3.8 Strip Blade	15409	0.1496	3.8	-
S25M-3.9 Strip Blade	41673	0.1535	3.9	-
S25M-4.0 Strip Blade	41674	0.1575	4.0	-
S25M-4.1 Strip Blade	41675	0.1614	4.1	-
S25M-4.2 Strip Blade	23084	0.1654	4.2	-
S25M-4.3 Strip Blade	19216	0.1693	4.3	-
S25M-4.4 Strip Blade	41676	0.1732	4.4	-
S25M-4.5 Strip Blade	41677	0.1772	4.5	-
S25M-4.6 Strip Blade	19217	0.1811	4.6	-



Schleuniger US-2500 Full Radius Blades

Mechtrix Description	Mechtrix Part Number	Blade Form (in)	Diameter (mm)	OEM Part Number
S25-0.4D Strip Blade	18220	0.0158	0.4	-
S25-0.5D Strip Blade	18574	0.0197	0.5	-
S25-0.6D Strip Blade	18392	0.0236	0.6	-
S25-0.7D Strip Blade	41679	0.0276	0.7	-
S25-0.8D Strip Blade	16900	0.0315	0.8	-
S25-0.9D Strip Blade	18394	0.0354	0.9	-
S25-1.0D Strip Blade	16898	0.0394	1.0	-
S25-1.1D Strip Blade	41680	0.0433	1.1	-
S25-1.2D Strip Blade	16896	0.0472	1.2	-
S25-1.3D Strip Blade	41681	0.0512	1.3	-
S25-1.4D Strip Blade	41682	0.0551	1.4	-
S25-1.5D Strip Blade	32385	0.0591	1.5	-
S25-1.6D Strip Blade	16902	0.0630	1.6	-
S25-1.7D Strip Blade	41683	0.0669	1.7	-
S25-1.8D Strip Blade	41684	0.0709	1.8	-
S25-1.9D Strip Blade	20434	0.0748	1.9	-
S25-2.0D Strip Blade	26373	0.0787	2.0	-
S25-2.1D Strip Blade	41685	0.0827	2.1	-
S25-2.2D Strip Blade	41686	0.0866	2.2	-
S25-2.3D Strip Blade	41687	0.0906	2.3	-
S25-2.4D Strip Blade	41688	0.0945	2.4	-
S25-2.5D Strip Blade	41689	0.0984	2.5	-
S25-2.6D Strip Blade	41690	0.1024	2.6	-
S25-2.7D Strip Blade	41691	0.1063	2.7	-
S25-2.8D Strip Blade	41692	0.1102	2.8	-
S25-2.9D Strip Blade	41693	0.1142	2.9	-

Continued on Next Page

UniStrip 2500 Series Blades

Used in the following *Schleuniger* machines:

UniStrip 2500



Schleuniger US-2500 Full Radius Blades (continued)

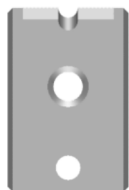
Mechtrix Description	Mechtrix Part Number	Blade Form (in)	Diameter (mm)	OEM Part Number
S25-3.0D Strip Blade	41694	0.1181	3.0	-
S25-3.1D Strip Blade	41695	0.1221	3.1	-
S25-3.2D Strip Blade	33445	0.1260	3.2	-
S25-3.3D Strip Blade	41696	0.1299	3.3	-
S25-3.4D Strip Blade	41697	0.1339	3.4	-
S25-3.5D Strip Blade	41698	0.1378	3.5	-
S25-3.6D Strip Blade	41699	0.1417	3.6	-
S25-3.7D Strip Blade	41700	0.1457	3.7	-
S25-3.8D Strip Blade	41701	0.1496	3.8	-
S25-3.9D Strip Blade	41702	0.1535	3.9	-
S25-4.0D Strip Blade	32206	0.1575	4.0	-
S25-4.1D Strip Blade	41703	0.1614	4.1	-
S25-4.2D Strip Blade	41704	0.1654	4.2	-
S25-4.3D Strip Blade	41705	0.1693	4.3	-
S25-4.4D Strip Blade	41706	0.1732	4.4	-
S25-4.5D Strip Blade	16873	0.1772	4.5	-
S25-4.6D Strip Blade	41707	0.1811	4.6	-



Schleuniger US-2500 Cyclonic-V® Blades

Patented **Mechtrix Cyclonic-V® Stripping Blades** are another innovative solution available for stripping the most difficult wire insulations in these machines. This stripping blade design offers more precise control of the depth of the cut into the insulation and improved centering of the wire in the stripping blades.

[Please Contact Mechtrix for Assistance](#)



Schleuniger US-2500 Die-Type Blades

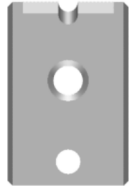
Mechtrix Description	Mechtrix Part Number	Blade Form (in)	Diameter (mm)	OEM Part Number
S25D-0.3 Strip Blade	19109	0.0118	0.3	-
S25D-0.4 Strip Blade	19065	0.0158	0.4	-
S25D-0.5 Strip Blade	18646	0.0197	0.5	-
S25D-0.6 Strip Blade	18644	0.0236	0.6	-
S25D-0.7 Strip Blade	18897	0.0276	0.7	-
S25D-0.8 Strip Blade	18642	0.0315	0.8	-
S25D-0.9 Strip Blade	19398	0.0354	0.9	-
S25D-1.0 Strip Blade	18898	0.0394	1.0	-
S25D-1.1 Strip Blade	19548	0.0433	1.1	-
S25D-1.2 Strip Blade	18650	0.0472	1.2	-
S25D-1.3 Strip Blade	19060	0.0512	1.3	-
S25D-1.4 Strip Blade	19394	0.0551	1.4	-
S25D-1.5 Strip Blade	41708	0.0591	1.5	-

[Continued on Next Page](#)

UniStrip 2500 Series Blades

Used in the following *Schleuniger* machines:

UniStrip 2500



Schleuniger US-2500 Die-Type Blades (continued)

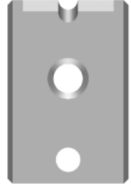
Mechtrix Description	Mechtrix Part Number	Blade Form (in)	Diameter (mm)	OEM Part Number
S25D-1.6 Strip Blade	28344	0.0630	1.6	-
S25D-1.7 Strip Blade	41709	0.0669	1.7	-
S25D-1.8 Strip Blade	28333	0.0709	1.8	-
S25D-1.9 Strip Blade	20376	0.0748	1.9	-
S25D-2.0 Strip Blade	19059	0.0787	2.0	-
S25D-2.1 Strip Blade	41710	0.0827	2.1	-
S25D-2.2 Strip Blade	19396	0.0866	2.2	-
S25D-2.3 Strip Blade	19057	0.0906	2.3	-
S25D-2.4 Strip Blade	41711	0.0945	2.4	-
S25D-2.5 Strip Blade	41712	0.0984	2.5	-
S25D-2.6 Strip Blade	25169	0.1024	2.6	-
S25D-2.7 Strip Blade	25167	0.1063	2.7	-
S25D-2.8 Strip Blade	19055	0.1102	2.8	-
S25D-2.9 Strip Blade	41713	0.1142	2.9	-
S25D-3.0 Strip Blade	26996	0.1181	3.0	-
S25D-3.1 Strip Blade	25165	0.1221	3.1	-
S25D-3.2 Strip Blade	41714	0.1260	3.2	-
S25D-3.3 Strip Blade	41715	0.1299	3.3	-
S25D-3.4 Strip Blade	41716	0.1339	3.4	-
S25D-3.5 Strip Blade	41717	0.1378	3.5	-
S25D-3.6 Strip Blade	41718	0.1417	3.6	-
S25D-3.7 Strip Blade	41719	0.1457	3.7	-
S25D-3.8 Strip Blade	41720	0.1496	3.8	-
S25D-3.9 Strip Blade	41721	0.1535	3.9	-
S25D-4.0 Strip Blade	41722	0.1575	4.0	-
S25D-4.1 Strip Blade	41723	0.1614	4.1	-
S25D-4.2 Strip Blade	41724	0.1654	4.2	-
S25D-4.3 Strip Blade	41725	0.1693	4.3	-
S25D-4.4 Strip Blade	41726	0.1732	4.4	-
S25D-4.5 Strip Blade	41727	0.1772	4.5	-
S25D-4.6 Strip Blade	41728	0.1811	4.6	-
S25D-4.7 Strip Blade	41729	0.1850	4.7	-
S25D-4.8 Strip Blade	41730	0.1890	4.8	-
S25D-4.9 Strip Blade	41731	0.1929	4.9	-
S25D-5.0 Strip Blade	41732	0.1969	5.0	-
S25D-5.1 Strip Blade	41733	0.2008	5.1	-
S25D-5.2 Strip Blade	41734	0.2047	5.2	-
S25D-5.3 Strip Blade	41735	0.2087	5.3	-
S25D-5.4 Strip Blade	41736	0.2126	5.4	-
S25D-5.5 Strip Blade	41737	0.2165	5.5	-
S25D-5.6 Strip Blade	41738	0.2205	5.6	-
S25D-5.7 Strip Blade	41739	0.2244	5.7	-
S25D-5.8 Strip Blade	41740	0.2284	5.8	-
S25D-5.9 Strip Blade	41741	0.2323	5.9	-
S25D-6.0 Strip Blade	41742	0.2362	6.0	-
S25D-6.1 Strip Blade	41743	0.2402	6.1	-
S25D-6.2 Strip Blade	41744	0.2441	6.2	-

Continued on Next Page

UniStrip 2500 Series Blades

Used in the following *Schleuniger* machines:

UniStrip 2500



Schleuniger US-2500 Die-Type Blades (continued)

Mechtrix Description	Mechtrix Part Number	Blade Form (in)	Diameter (mm)	OEM Part Number
S25D-6.3 Strip Blade	41745	0.2480	6.3	-
S25D-6.4 Strip Blade	41746	0.2520	6.4	-
S25D-6.5 Strip Blade	41747	0.2559	6.5	-



Schleuniger US-2500 Multi-Conductor Blades

Multi-Conductor Blades are available for the UniStrip 2500 machines.

Please Contact Mechtrix for Assistance