

UniStrip 2300 Series Blades

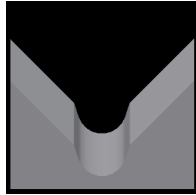
Used in the following **Schleuniger** machines:

UniStrip 2300

Available UniStrip 2300 Blade Form Geometries Include:



Universal



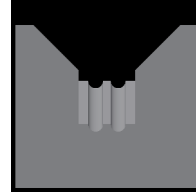
M-Series®



Full-Radius



Cyclonic-V®



Multi-Conductor



Schleuniger US-2300 Universal Blades

Mechtrix Description	Mechtrix Part Number	Blade Form Diameter		OEM Part Number
		(in)	(mm)	
Schleuniger US-2300 Universal Blade - Tool Steel	32448	-	-	STM-410993
Schleuniger US-2300 Universal Blade - Carbide	33659	-	-	STM-418229



Schleuniger US-2300 M-Series® Blades

Mechtrix Description	Mechtrix Part Number	Blade Form Diameter		OEM Part Number
		(in)	(mm)	
S2300M-0.3 Strip Blade	33959	0.0118	0.3	-
S2300M-0.4 Strip Blade	34903	0.0158	0.4	-
S2300M-0.5 Strip Blade	36919	0.0197	0.5	-
S2300M-0.6 Strip Blade	35988	0.0236	0.6	-
S2300M-0.7 Strip Blade	37541	0.0276	0.7	-
S2300M-0.8 Strip Blade	32583	0.0315	0.8	-
S2300M-0.9 Strip Blade	35956	0.0354	0.9	-
S2300M-1.0 Strip Blade	35607	0.0394	1.0	-
S2300M-1.1 Strip Blade	41616	0.0433	1.1	-
S2300M-1.2 Strip Blade	41617	0.0472	1.2	-
S2300M-1.3 Strip Blade	36769	0.0512	1.3	-
S2300M-1.4 Strip Blade	41618	0.0551	1.4	-
S2300M-1.5 Strip Blade	32584	0.0591	1.5	-
S2300M-1.6 Strip Blade	41619	0.0630	1.6	-
S2300M-1.7 Strip Blade	41620	0.0669	1.7	-
S2300M-1.8 Strip Blade	34291	0.0709	1.8	-
S2300M-1.9 Strip Blade	34263	0.0748	1.9	-
S2300M-2.0 Strip Blade	41621	0.0787	2.0	-
S2300M-2.1 Strip Blade	41622	0.0827	2.1	-
S2300M-2.2 Strip Blade	33597	0.0866	2.2	-
S2300M-2.3 Strip Blade	41623	0.0906	2.3	-
S2300M-2.4 Strip Blade	36452	0.0945	2.4	-
S2300M-2.5 Strip Blade	36453	0.0984	2.5	-
S2300M-2.6 Strip Blade	41624	0.1024	2.6	-
S2300M-2.7 Strip Blade	41625	0.1063	2.7	-
S2300M-2.8 Strip Blade	41626	0.1102	2.8	-
S2300M-2.9 Strip Blade	41627	0.1142	2.9	-
S2300M-3.0 Strip Blade	41628	0.1181	3.0	-

Continued on Next Page

UniStrip 2300 Series Blades

Used in the following *Schleuniger* machines:

UniStrip 2300



Schleuniger US-2300 M-Series® Blades (continued)

Mechtrix Description	Mechtrix Part Number	Blade Form Diameter		OEM Part Number
		(in)	(mm)	
S2300M-3.1 Strip Blade	35399	0.1221	3.1	-
S2300M-3.2 Strip Blade	41629	0.1260	3.2	-
S2300M-3.3 Strip Blade	36603	0.1299	3.3	-
S2300M-3.4 Strip Blade	41630	0.1339	3.4	-
S2300M-3.5 Strip Blade	41631	0.1378	3.5	-
S2300M-3.6 Strip Blade	41632	0.1417	3.6	-
S2300M-3.7 Strip Blade	41633	0.1457	3.7	-
S2300M-3.8 Strip Blade	41634	0.1496	3.8	-
S2300M-3.9 Strip Blade	41635	0.1535	3.9	-
S2300M-4.0 Strip Blade	41636	0.1575	4.0	-



Schleuniger US-2300 Full Radius Blades

Mechtrix Description	Mechtrix Part Number	Blade Form Diameter		OEM Part Number
		(in)	(mm)	
S2300-0.3D Strip Blade	41637	0.0118	0.3	-
S2300-0.4D Strip Blade	41638	0.0158	0.4	-
S2300-0.5D Strip Blade	34674	0.0197	0.5	-
S2300-0.6D Strip Blade	34521	0.0236	0.6	-
S2300-0.7D Strip Blade	34468	0.0276	0.7	-
S2300-0.8D Strip Blade	35306	0.0315	0.8	-
S2300-0.9D Strip Blade	35307	0.0354	0.9	-
S2300-1.0D Strip Blade	34469	0.0394	1.0	-
S2300-1.1D Strip Blade	41639	0.0433	1.1	-
S2300-1.2D Strip Blade	41640	0.0472	1.2	-
S2300-1.3D Strip Blade	41641	0.0512	1.3	-
S2300-1.4D Strip Blade	33262	0.0551	1.4	-
S2300-1.5D Strip Blade	41642	0.0591	1.5	-
S2300-1.6D Strip Blade	41643	0.0630	1.6	-
S2300-1.7D Strip Blade	41644	0.0669	1.7	-
S2300-1.8D Strip Blade	41645	0.0709	1.8	-
S2300-1.9D Strip Blade	41646	0.0748	1.9	-
S2300-2.0D Strip Blade	41647	0.0787	2.0	-
S2300-2.1D Strip Blade	41648	0.0827	2.1	-
S2300-2.2D Strip Blade	41649	0.0866	2.2	-
S2300-2.3D Strip Blade	41650	0.0906	2.3	-
S2300-2.4D Strip Blade	41651	0.0945	2.4	-
S2300-2.5D Strip Blade	41652	0.0984	2.5	-
S2300-2.6D Strip Blade	41653	0.1024	2.6	-
S2300-2.7D Strip Blade	41654	0.1063	2.7	-
S2300-2.8D Strip Blade	41655	0.1102	2.8	-
S2300-2.9D Strip Blade	41656	0.1142	2.9	-
S2300-3.0D Strip Blade	41657	0.1181	3.0	-
S2300-3.1D Strip Blade	35400	0.1221	3.1	-
S2300-3.2D Strip Blade	41658	0.1260	3.2	-
S2300-3.3D Strip Blade	41659	0.1299	3.3	-

Continued on Next Page

UniStrip 2300 Series Blades

Used in the following *Schleuniger* machines:

UniStrip 2300



Schleuniger US-2300 Full Radius Blades

Mechtrix Description	Mechtrix Part Number	Blade Form (in)	Diameter (mm)	OEM Part Number
S2300-3.4D Strip Blade	41660	0.1339	3.4	-
S2300-3.5D Strip Blade	41661	0.1378	3.5	-
S2300-3.6D Strip Blade	41662	0.1417	3.6	-
S2300-3.7D Strip Blade	41663	0.1457	3.7	-
S2300-3.8D Strip Blade	41664	0.1496	3.8	-
S2300-3.9D Strip Blade	41665	0.1535	3.9	-
S2300-4.0D Strip Blade	37415	0.1575	4.0	-



Schleuniger US-2300 Cyclonic-V® Blades

Patented **Mechtrix Cyclonic-V® Stripping Blades** are another innovative solution available for stripping the most difficult wire insulations in these machines. This stripping blade design offers more precise control of the depth of the cut into the insulation and improved centering of the wire in the stripping blades.

[Please Contact Mechtrix for Assistance](#)



Schleuniger US-2300 Multi-Conductor Blades

Multi-Conductor Blades are available for the UniStrip 2300 machines.

[Please Contact Mechtrix for Assistance](#)