

UniStrip 2015 Series Blades

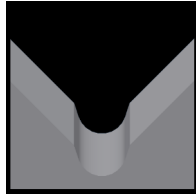
Used in the following **Schleuniger** machines:

UniStrip 2015, 2100, 2545

Available UniStrip 2015 Blade Form Geometries Include:



Universal



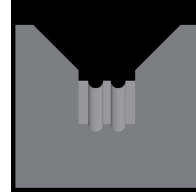
M-Series®



Full-Radius



Cyclonic-V®



Multi-Conductor

Schleuniger US-2015, US-2100 and US-2545 Universal Blades



Mechtrix Description	Mechtrix Part Number	Blade Form Diameter		OEM Part Number
		(in)	(mm)	
Schleuniger US-2015/US-2100/US-2545 Universal Blade - Tool Steel	4530	-	-	A4-0360 or CXP-2015-012C
Schleuniger US-2015/US-2100/US-2545 Universal Blade - Carbide	14453	-	-	CXP-2015-013C

Schleuniger US-2015, US-2100m and US-2545 M-Series® Blades



Mechtrix Description	Mechtrix Part Number	Blade Form Diameter		OEM Part Number
		(in)	(mm)	
S2015M-0.3 Strip Blade	22925	0.0118	0.3	-
S2015M-0.4 Strip Blade	25358	0.0158	0.4	-
S2015M-0.5 Strip Blade	20246	0.0197	0.5	-
S2015M-0.6 Strip Blade	24090	0.0236	0.6	-
S2015M-0.7 Strip Blade	22447	0.0276	0.7	-
S2015M-0.8 Strip Blade	19436	0.0315	0.8	-
S2015M-0.9 Strip Blade	27867	0.0354	0.9	-
S2015M-1.0 Strip Blade	24664	0.0394	1.0	-
S2015M-1.1 Strip Blade	23925	0.0433	1.1	-
S2015M-1.2 Strip Blade	23634	0.0472	1.2	-
S2015M-1.3 Strip Blade	21194	0.0512	1.3	-
S2015M-1.4 Strip Blade	21678	0.0551	1.4	-
S2015M-1.5 Strip Blade	19441	0.0591	1.5	-
S2015M-1.6 Strip Blade	23924	0.0630	1.6	-
S2015M-1.7 Strip Blade	27970	0.0669	1.7	-
S2015M-1.8 Strip Blade	19074	0.0709	1.8	-
S2015M-1.9 Strip Blade	28395	0.0748	1.9	-
S2015M-2.0 Strip Blade	27773	0.0787	2.0	-
S2015M-2.1 Strip Blade	24831	0.0827	2.1	-
S2015M-2.2 Strip Blade	19442	0.0866	2.2	-
S2015M-2.3 Strip Blade	24557	0.0906	2.3	-
S2015M-2.4 Strip Blade	31515	0.0945	2.4	-
S2015M-2.5 Strip Blade	41575	0.0984	2.5	-
S2015M-2.6 Strip Blade	23803	0.1024	2.6	-
S2015M-2.7 Strip Blade	41576	0.1063	2.7	-
S2015M-2.8 Strip Blade	35062	0.1102	2.8	-
S2015M-2.9 Strip Blade	31632	0.1142	2.9	-
S2015M-3.0 Strip Blade	37055	0.1181	3.0	-

Continued on Next Page

UniStrip 2015 Series Blades

Used in the following *Schleuniger* machines:

UniStrip 2015, 2100, 2545



Schleuniger US-2015, US-2100m and US-2545 M-Series® Blades (continued)

Mechtrix Description	Mechtrix Part Number	Blade Form Diameter		OEM Part Number
		(in)	(mm)	
S2015M-3.1 Strip Blade	25303	0.1221	3.1	-
S2015M-3.2 Strip Blade	41577	0.1260	3.2	-
S2015M-3.3 Strip Blade	41578	0.1299	3.3	-
S2015M-3.4 Strip Blade	41579	0.1339	3.4	-
S2015M-3.5 Strip Blade	25488	0.1378	3.5	-
S2015M-3.6 Strip Blade	41580	0.1417	3.6	-
S2015M-3.7 Strip Blade	41581	0.1457	3.7	-
S2015M-3.8 Strip Blade	41582	0.1496	3.8	-
S2015M-3.9 Strip Blade	41583	0.1535	3.9	-
S2015M-4.0 Strip Blade	41584	0.1575	4.0	-
S2015M-4.1 Strip Blade	41585	0.1614	4.1	-
S2015M-4.2 Strip Blade	41586	0.1654	4.2	-
S2015M-4.3 Strip Blade	30540	0.1693	4.3	-
S2015M-4.4 Strip Blade	41587	0.1732	4.4	-
S2015M-4.5 Strip Blade	41588	0.1772	4.5	-
S2015M-4.6 Strip Blade	41589	0.1811	4.6	-
S2015M-4.7 Strip Blade	21979	0.1850	4.7	-



Schleuniger US-2015, US-2100m and US-2545 Full Radius Blades

Mechtrix Description	Mechtrix Part Number	Blade Form Diameter		OEM Part Number
		(in)	(mm)	
S2015-0.4D Strip Blade	25122	0.0158	0.4	-
S2015-0.5D Strip Blade	20247	0.0197	0.5	-
S2015-0.6D Strip Blade	18395	0.0236	0.6	-
S2015-0.7D Strip Blade	28202	0.0276	0.7	-
S2015-0.8D Strip Blade	18598	0.0315	0.8	-
S2015-0.9D Strip Blade	18397	0.0354	0.9	-
S2015-1.0D Strip Blade	23450	0.0394	1.0	-
S2015-1.1D Strip Blade	19532	0.0433	1.1	-
S2015-1.2D Strip Blade	31202	0.0472	1.2	-
S2015-1.3D Strip Blade	18768	0.0512	1.3	-
S2015-1.4D Strip Blade	23598	0.0551	1.4	-
S2015-1.5D Strip Blade	18703	0.0591	1.5	-
S2015-1.6D Strip Blade	41590	0.0630	1.6	-
S2015-1.7D Strip Blade	25121	0.0669	1.7	-
S2015-1.8D Strip Blade	41591	0.0709	1.8	-
S2015-1.9D Strip Blade	25120	0.0748	1.9	-
S2015-2.0D Strip Blade	22079	0.0787	2.0	-
S2015-2.1D Strip Blade	25119	0.0827	2.1	-
S2015-2.2D Strip Blade	41592	0.0866	2.2	-
S2015-2.3D Strip Blade	41593	0.0906	2.3	-
S2015-2.4D Strip Blade	24306	0.0945	2.4	-
S2015-2.5D Strip Blade	41594	0.0984	2.5	-
S2015-2.6D Strip Blade	41595	0.1024	2.6	-

Continued on Next Page

UniStrip 2015 Series Blades

Used in the following *Schleuniger* machines:

UniStrip 2015, 2100, 2545



Schleuniger US-2015, US-2100m and US-2545 Full Radius Blades (continued)

Mechtrix Description	Mechtrix Part Number	Blade Form Diameter (in)	Diameter (mm)	OEM Part Number
S2015-2.7D Strip Blade	41596	0.1063	2.7	-
S2015-2.8D Strip Blade	41597	0.1102	2.8	-
S2015-2.9D Strip Blade	41598	0.1142	2.9	-
S2015-3.0D Strip Blade	41599	0.1181	3.0	-
S2015-3.1D Strip Blade	41600	0.1221	3.1	-
S2015-3.2D Strip Blade	41601	0.1260	3.2	-
S2015-3.3D Strip Blade	41602	0.1299	3.3	-
S2015-3.4D Strip Blade	41603	0.1339	3.4	-
S2015-3.5D Strip Blade	28516	0.1378	3.5	-
S2015-3.6D Strip Blade	41604	0.1417	3.6	-
S2015-3.7D Strip Blade	41605	0.1457	3.7	-
S2015-3.8D Strip Blade	41606	0.1496	3.8	-
S2015-3.9D Strip Blade	41607	0.1535	3.9	-
S2015-4.0D Strip Blade	41608	0.1575	4.0	-
S2015-4.1D Strip Blade	41609	0.1614	4.1	-
S2015-4.2D Strip Blade	41610	0.1654	4.2	-
S2015-4.3D Strip Blade	41611	0.1693	4.3	-
S2015-4.4D Strip Blade	41612	0.1732	4.4	-
S2015-4.5D Strip Blade	41613	0.1772	4.5	-
S2015-4.6D Strip Blade	41614	0.1811	4.6	-
S2015-4.7D Strip Blade	41615	0.1850	4.7	-



Schleuniger US-2015 Cyclonic-V® Blades

Patented **Mechtrix Cyclonic-V® Stripping Blades** are another innovative solution available for stripping the most difficult wire insulations in these machines. This stripping blade design offers more precise control of the depth of the cut into the insulation and improved centering of the wire in the stripping blades.

[Please Contact Mechtrix for Assistance](#)



Schleuniger US-2015 Multi-Conductor Blades

Multi-Conductor Blades are available for the UniStrip 2015 machines.

[Please Contact Mechtrix for Assistance](#)