

Mecal SC10 Series Blades

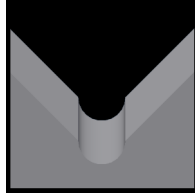
Used in the following *Mecal* machines:

SC10 | SC11 | SC12

Available SC10 Blade Form Geometries Include:



V-Style



Full-Radius



Mecal SC10/SC11/SC12 Stripping Blades

Mechtrix Description	Mechtrix Part Number	Blade Form Diameter		OEM Part Number
		(in)	(mm)	
SC10/SC11/SC12-0.2 Stripper/Crimper Blade (R0.1)	26447	0.00787	0.2	791130021
SC10/SC11/SC12-0.7 Stripper/Crimper Blade (R0.35)	26448	0.02756	0.7	791130014
SC10/SC11/SC12-1.0 Stripper/Crimper Blade (R0.5)	25611	0.03937	1.0	791130011
SC10/SC11/SC12-1.5 Stripper/Crimper Blade (R0.75)	17377	0.05906	1.5	791130020
SC10/SC11/SC12-2.0 Stripper/Crimper Blade (R1.0)	26449	0.07874	2.0	791130015
SC10/SC11/SC12-3.0 Stripper/Crimper Blade (R1.5)	26450	0.11811	3.0	791130016
SC10/SC11/SC12-4.0 Stripper/Crimper Blade (R2.0)	26451	0.15748	4.0	791130017



Mecal SC10/SC11/SC12 Full Radius Blades

Full Radius Blades are available in 0.1mm increments in the following sizes:

SC10/11/12-0.4D thru **SC10/11/12-4.0D**