

# MTX Series Blades

Used in the following Artos machines:

MTX | STX | CR.11 | CR.22

## Available MTX Blade Form Geometries Include:



Universal



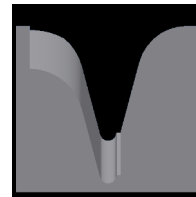
M-Series®



Full-Radius



V-Style



Cyclonic-V®



## Mechtrix MTX Universal Stripping and Cut-off Blades

Mechtrix Description	Mechtrix Part Number	Blade Form Diameter		OEM Part Number
		(in)	(mm)	
MTXMCR-30 Universal Strip Blade	24331-CT1	-	-	138774-1
MTXMCR-20 Universal Strip Blade	24332-CT1	-	-	138774-2
MTXCL Cut-off Blade	24333-CT1	-	-	138773
ACR11-CL Cut-off Blade	33624	-	-	144954



## Mechtrix MTX M-Series® Blades

Mechtrix Description	Mechtrix Part Number	Blade Form Diameter		OEM Part Number
		(in)	(mm)	
MTXM-0.3 Strip Blade	40820	0.0118	0.3	-
MTXM-0.4 Strip Blade	27735	0.0158	0.4	-
MTXM-0.5 Strip Blade	32046	0.0197	0.5	-
MTXM-0.6 Strip Blade	25906	0.0236	0.6	-
MTXM-0.7 Strip Blade	27736	0.0276	0.7	-
MTXM-0.8 Strip Blade	33029	0.0315	0.8	-
MTXM-0.9 Strip Blade	32047	0.0354	0.9	-
MTXM-1.0 Strip Blade	34533	0.0394	1.0	-
MTXM-1.1 Strip Blade	26922	0.0433	1.1	-
MTXM-1.2 Strip Blade	34820	0.0472	1.2	-
MTXM-1.3 Strip Blade	26006	0.0512	1.3	-
MTXM-1.4 Strip Blade	30552	0.0551	1.4	-
MTXM-1.5 Strip Blade	28017	0.0591	1.5	-
MTXM-1.6 Strip Blade	26005	0.0630	1.6	-
MTXM-1.7 Strip Blade	28016	0.0669	1.7	-
MTXM-1.8 Strip Blade	34377	0.0709	1.8	-
MTXM-1.9 Strip Blade	28216	0.0748	1.9	-
MTXM-2.0 Strip Blade	30090	0.0787	2.0	-
MTXM-2.1 Strip Blade	35179	0.0827	2.1	-
MTXM-2.2 Strip Blade	40821	0.0866	2.2	-
MTXM-2.3 Strip Blade	36136	0.0906	2.3	-
MTXM-2.4 Strip Blade	35944	0.0945	2.4	-
MTXM-2.5 Strip Blade	37474	0.0984	2.5	-
MTXM-2.6 Strip Blade	40822	0.1024	2.6	-
MTXM-2.7 Strip Blade	30091	0.1063	2.7	-
MTXM-2.8 Strip Blade	40823	0.1102	2.8	-
MTXM-2.9 Strip Blade	40824	0.1142	2.9	-

Continued on Next Page

# MTX Series Blades

Used in the following Artos machines:

MTX | STX | CR.11 | CR.22



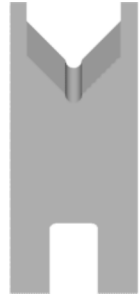
## Mechtrix MTX M-Series® Blades (continued)

Mechtrix Description	Mechtrix Part Number	Blade Form Diameter (in)	Diameter (mm)	OEM Part Number
MTXM-3.0 Strip Blade	31837	0.1181	3.0	-
MTXM-3.1 Strip Blade	37126	0.1221	3.1	-
MTXM-3.2 Strip Blade	31328	0.1260	3.2	-
MTXM-3.3 Strip Blade	40825	0.1299	3.3	-
MTXM-3.4 Strip Blade	34378	0.1339	3.4	-
MTXM-3.5 Strip Blade	40826	0.1378	3.5	-
MTXM-3.6 Strip Blade	35070	0.1417	3.6	-
MTXM-3.7 Strip Blade	40827	0.1457	3.7	-
MTXM-3.8 Strip Blade	40828	0.1496	3.8	-
MTXM-3.9 Strip Blade	31325	0.1535	3.9	-
MTXM-4.0 Strip Blade	31327	0.1575	4.0	-
MTXM-4.1 Strip Blade	40829	0.1614	4.1	-
MTXM-4.2 Strip Blade	40830	0.1654	4.2	-
MTXM-4.3 Strip Blade	40831	0.1693	4.3	-
MTXM-4.4 Strip Blade	40832	0.1732	4.4	-
MTXM-4.5 Strip Blade	29903	0.1772	4.5	-
MTXM-4.6 Strip Blade	40833	0.1811	4.6	-
MTXM-4.7 Strip Blade	40834	0.1850	4.7	-
MTXM-4.8 Strip Blade	40835	0.1890	4.8	-
MTXM-4.9 Strip Blade	40836	0.1929	4.9	-
MTXM-5.0 Strip Blade	40837	0.1969	5.0	-
MTXM-5.1 Strip Blade	40838	0.2008	5.1	-
MTXM-5.2 Strip Blade	40839	0.2047	5.2	-
MTXM-5.3 Strip Blade	40840	0.2087	5.3	-
MTXM-5.4 Strip Blade	40841	0.2126	5.4	-
MTXM-5.5 Strip Blade	40842	0.2165	5.5	-
MTXM-5.6 Strip Blade	40843	0.2205	5.6	-
MTXM-5.7 Strip Blade	40844	0.2244	5.7	-
MTXM-5.8 Strip Blade	40845	0.2284	5.8	-
MTXM-5.9 Strip Blade	40846	0.2323	5.9	-
MTXM-6.0 Strip Blade	40847	0.2362	6.0	-

# MTX Series Blades

Used in the following Artos machines:

MTX | STX | CR.11 | CR.22



## Mechtrix MTX Full Radius Blades

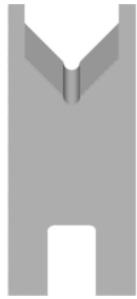
Mechtrix Description	Mechtrix	Blade Form Diameter		OEM
	Part Number	(in)	(mm)	Part Number
MTX-0.3D Strip Blade	40894	0.0118	0.3	-
MTX-0.4D Strip Blade	25909	0.0158	0.4	-
MTX-0.5D Strip Blade	25961	0.0197	0.5	-
MTX-0.6D Strip Blade	25910	0.0236	0.6	-
MTX-0.7D Strip Blade	40848	0.0276	0.7	-
MTX-0.8D Strip Blade	40849	0.0315	0.8	-
MTX-0.9D Strip Blade	35332	0.0354	0.9	-
MTX-1.0D Strip Blade	32048	0.0394	1.0	-
MTX-1.1D Strip Blade	40850	0.0433	1.1	-
MTX-1.2D Strip Blade	34718	0.0472	1.2	-
MTX-1.3D Strip Blade	40851	0.0512	1.3	-
MTX-1.4D Strip Blade	32049	0.0551	1.4	-
MTX-1.5D Strip Blade	40852	0.0591	1.5	-
MTX-1.6D Strip Blade	40853	0.0630	1.6	-
MTX-1.7D Strip Blade	34719	0.0669	1.7	-
MTX-1.8D Strip Blade	40854	0.0709	1.8	-
MTX-1.9D Strip Blade	40855	0.0748	1.9	-
MTX-2.0D Strip Blade	40856	0.0787	2.0	-
MTX-2.1D Strip Blade	40857	0.0827	2.1	-
MTX-2.2D Strip Blade	40858	0.0866	2.2	-
MTX-2.3D Strip Blade	37927	0.0906	2.3	-
MTX-2.4D Strip Blade	36386	0.0945	2.4	-
MTX-2.5D Strip Blade	40859	0.0984	2.5	-
MTX-2.6D Strip Blade	40860	0.1024	2.6	-
MTX-2.7D Strip Blade	40861	0.1063	2.7	-
MTX-2.8D Strip Blade	40862	0.1102	2.8	-
MTX-2.9D Strip Blade	40863	0.1142	2.9	-
MTX-3.0D Strip Blade	40864	0.1181	3.0	-
MTX-3.1D Strip Blade	40865	0.1221	3.1	-
MTX-3.2D Strip Blade	40866	0.1260	3.2	-
MTX-3.3D Strip Blade	40867	0.1299	3.3	-
MTX-3.4D Strip Blade	40868	0.1339	3.4	-
MTX-3.5D Strip Blade	40869	0.1378	3.5	-
MTX-3.6D Strip Blade	40870	0.1417	3.6	-
MTX-3.7D Strip Blade	40871	0.1457	3.7	-
MTX-3.8D Strip Blade	40872	0.1496	3.8	-
MTX-3.9D Strip Blade	40873	0.1535	3.9	-
MTX-4.0D Strip Blade	40874	0.1575	4.0	-
MTX-4.1D Strip Blade	40875	0.1614	4.1	-
MTX-4.2D Strip Blade	40876	0.1654	4.2	-
MTX-4.3D Strip Blade	40877	0.1693	4.3	-
MTX-4.4D Strip Blade	40878	0.1732	4.4	-
MTX-4.5D Strip Blade	40879	0.1772	4.5	-
MTX-4.6D Strip Blade	40880	0.1811	4.6	-
MTX-4.7D Strip Blade	40881	0.1850	4.7	-
MTX-4.8D Strip Blade	40882	0.1890	4.8	-
MTX-4.9D Strip Blade	40883	0.1929	4.9	-

Continued on Next Page

# MTX Series Blades

Used in the following Artos machines:

MTX | STX | CR.11 | CR.22



## Mechtrix MTX Full Radius Blades

Mechtrix Description	Mechtrix Part Number	Blade Form Diameter (in)	Blade Form Diameter (mm)	OEM Part Number
MTX-5.0D Strip Blade	40884	0.1969	5.0	-
MTX-5.1D Strip Blade	40885	0.2008	5.1	-
MTX-5.2D Strip Blade	40886	0.2047	5.2	-
MTX-5.3D Strip Blade	40887	0.2087	5.3	-
MTX-5.4D Strip Blade	40888	0.2126	5.4	-
MTX-5.5D Strip Blade	40889	0.2165	5.5	-
MTX-5.6D Strip Blade	26614	0.2205	5.6	-
MTX-5.7D Strip Blade	40890	0.2244	5.7	-
MTX-5.8D Strip Blade	40891	0.2284	5.8	-
MTX-5.9D Strip Blade	40892	0.2323	5.9	-
MTX-6.0D Strip Blade	40893	0.2362	6.0	-



## Artos MTX V-Style Blades

V-Style Blades are available for the MTX machines.

[Please Contact Mechtrix for Assistance](#)



## Artos MTX Cyclonic-V® Blades

Patented **Mechtrix Cyclonic-V® Stripping Blades** are another innovative solution available for stripping the most difficult wire insulations in these machines. This stripping blade design offers more precise control of the depth of the cut into the insulation and improved centering of the wire in the stripping blades.

[Please Contact Mechtrix for Assistance](#)