

# Komax 35 Series Blades

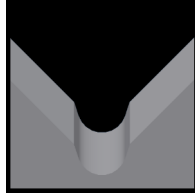
Used in the following Komax machines:

Komax 35

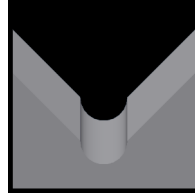
## Available Komax 35 Blade Form Geometries Include:



Universal



M-Series®



Full-Radius

## Komax 35 Universal Blades



Mechtrix Description	Mechtrix Part Number	Blade Form Diameter		OEM Part Number
		(in)	(mm)	
KL33/35 Stripping Blade (S7) - Ultra Hard Carbide	01612-01	-	-	0018810
KL33/35 Stripping Blade (S4) - Tool Steel (D2)	01612-02	-	-	-

## Komax 35 M-Series® Blades



Mechtrix Description	Mechtrix Part Number	Blade Form Diameter		OEM Part Number
		(in)	(mm)	
K33M-0.3L Strip Blade	16958	0.0118	0.3	-
K33M-0.4L Strip Blade	15704	0.0158	0.4	-
K33M-0.5L Strip Blade	15605	0.0197	0.5	-
K33M-0.6L Strip Blade	19980	0.0236	0.6	-
K33M-0.7L Strip Blade	10449	0.0276	0.7	-
K33M-0.8L Strip Blade	16892	0.0315	0.8	-
K33M-0.9L Strip Blade	24175	0.0354	0.9	-
K33M-1.0L Strip Blade	15647	0.0394	1.0	-
K33M-1.1L Strip Blade	15535	0.0433	1.1	-
K33M-1.2L Strip Blade	15649	0.0472	1.2	-
K33M-1.3L Strip Blade	18418	0.0512	1.3	-
K33M-1.4L Strip Blade	14625	0.0551	1.4	-
K33M-1.5L Strip Blade	18783	0.0591	1.5	-
K33M-1.6L Strip Blade	9517	0.0630	1.6	-
K33M-1.7L Strip Blade	39184	0.0669	1.7	-
K33M-1.8L Strip Blade	25599	0.0709	1.8	-
K33M-1.9L Strip Blade	21432	0.0748	1.9	-
K33M-2.0L Strip Blade	16190	0.0787	2.0	-
K33M-2.1L Strip Blade	16335	0.0827	2.1	-
K33M-2.2L Strip Blade	25600	0.0866	2.2	-
K33M-2.3L Strip Blade	36472	0.0906	2.3	-
K33M-2.4L Strip Blade	11565	0.0945	2.4	-
K33M-2.5L Strip Blade	34417	0.0984	2.5	-
K33M-2.6L Strip Blade	39190	0.1024	2.6	-
K33M-2.7L Strip Blade	18570	0.1063	2.7	-
K33M-2.8L Strip Blade	18572	0.1102	2.8	-
K33M-2.9L Strip Blade	39192	0.1142	2.9	-
K33M-3.0L Strip Blade	39194	0.1181	3.0	-
K33M-3.1L Strip Blade	21763	0.1221	3.1	-

Continued on Next Page

# Komax 35 Series Blades

Used in the following Komax machines:

Komax 35



## Komax 35 M-Series® Blades (continued)

Mechtrix Description	Mechtrix Part Number	Blade Form Diameter (in)	Diameter (mm)	OEM Part Number
K33/35M-3.2L Strip Blade	39197	0.1260	3.2	-
K33/35M-3.3L Strip Blade	35690	0.1299	3.3	-
K33/35M-3.4L Strip Blade	22795	0.1339	3.4	-
K33/35M-3.5L Strip Blade	39199	0.1378	3.5	-
K33/35M-3.6L Strip Blade	9355	0.1417	3.6	-
K33/35M-3.7L Strip Blade	39201	0.1457	3.7	-
K33/35M-3.8L Strip Blade	23607	0.1496	3.8	-
K33/35M-3.9L Strip Blade	39204	0.1535	3.9	-
K33/35M-4.0L Strip Blade	39206	0.1575	4.0	-
K33/35M-4.1L Strip Blade	39208	0.1614	4.1	-
K33/35M-4.2L Strip Blade	39210	0.1654	4.2	-
K33/35M-4.3L Strip Blade	18372	0.1693	4.3	-
K33/35M-4.4L Strip Blade	39212	0.1732	4.4	-
K33/35M-4.5L Strip Blade	39214	0.1772	4.5	-
K33/35M-4.6L Strip Blade	39216	0.1811	4.6	-
K33/35M-4.7L Strip Blade	39218	0.1850	4.7	-
K33/35M-4.8L Strip Blade	39220	0.1890	4.8	-
K33/35M-4.9L Strip Blade	39222	0.1929	4.9	-
K33/35M-5.0L Strip Blade	39224	0.1969	5.0	-
K33/35M-5.1L Strip Blade	39226	0.2008	5.1	-
K33/35M-5.2L Strip Blade	39228	0.2047	5.2	-
K33/35M-5.3L Strip Blade	39230	0.2087	5.3	-
K33/35M-5.4L Strip Blade	39232	0.2126	5.4	-
K33/35M-5.5L Strip Blade	39234	0.2165	5.5	-
K33/35M-5.6L Strip Blade	39236	0.2205	5.6	-
K33/35M-5.7L Strip Blade	39238	0.2244	5.7	-
K33/35M-5.8L Strip Blade	39240	0.2284	5.8	-
K33/35M-5.9L Strip Blade	39242	0.2323	5.9	-
K33/35M-6.0L Strip Blade	39244	0.2362	6.0	-



## Komax 35 Full Radius Blades

Mechtrix Description	Mechtrix Part Number	Blade Form Diameter (in)	Diameter (mm)	OEM Part Number
K33/35-0.4DL Strip Blade	17624	0.0158	0.4	-
K33/35-0.5DL Strip Blade	16774	0.0197	0.5	-
K33/35-0.6DL Strip Blade	17870	0.0236	0.6	-
K33/35-0.7DL Strip Blade	11059	0.0276	0.7	-
K33/35-0.8DL Strip Blade	18102	0.0315	0.8	-
K33/35-0.9DL Strip Blade	18157	0.0354	0.9	-
K33/35-1.0DL Strip Blade	13465	0.0394	1.0	-
K33/35-1.1DL Strip Blade	18180	0.0433	1.1	-
K33/35-1.2DL Strip Blade	39247	0.0472	1.2	-
K33/35-1.3DL Strip Blade	14287	0.0512	1.3	-
K33/35-1.4DL Strip Blade	32472	0.0551	1.4	-
K33/35-1.5DL Strip Blade	17621	0.0591	1.5	-

Continued on Next Page

# Komax 35 Series Blades

Used in the following Komax machines:

Komax 35



## Komax 35 Full Radius Blades (continued)

Mechtrix Description	Mechtrix Part Number	Blade Form (in)	Diameter (mm)	OEM Part Number
K33/35-1.6DL Strip Blade	35469	0.0630	1.6	-
K33/35-1.7DL Strip Blade	34210	0.0669	1.7	-
K33/35-1.8DL Strip Blade	17641	0.0709	1.8	-
K33/35-1.9DL Strip Blade	39251	0.0748	1.9	-
K33/35-2.0DL Strip Blade	35952	0.0787	2.0	-
K33/35-2.1DL Strip Blade	35471	0.0827	2.1	-
K33/35-2.2DL Strip Blade	39254	0.0866	2.2	-
K33/35-2.3DL Strip Blade	39256	0.0906	2.3	-
K33/35-2.4DL Strip Blade	39258	0.0945	2.4	-
K33/35-2.5DL Strip Blade	39260	0.0984	2.5	-
K33/35-2.6DL Strip Blade	39262	0.1024	2.6	-
K33/35-2.7DL Strip Blade	39264	0.1063	2.7	-
K33/35-2.8DL Strip Blade	39266	0.1102	2.8	-
K33/35-2.9DL Strip Blade	39268	0.1142	2.9	-
K33/35-3.0DL Strip Blade	39270	0.1181	3.0	-
K33/35-3.1DL Strip Blade	39272	0.1221	3.1	-
K33/35-3.2DL Strip Blade	39274	0.1260	3.2	-
K33/35-3.3DL Strip Blade	39276	0.1299	3.3	-
K33/35-3.4DL Strip Blade	35146	0.1339	3.4	-
K33/35-3.5DL Strip Blade	39279	0.1378	3.5	-
K33/35-3.6DL Strip Blade	39281	0.1417	3.6	-
K33/35-3.7DL Strip Blade	39283	0.1457	3.7	-
K33/35-3.8DL Strip Blade	39285	0.1496	3.8	-
K33/35-3.9DL Strip Blade	39287	0.1535	3.7	-
K33/35-4.0DL Strip Blade	39289	0.1575	4.0	-
K33/35-4.1DL Strip Blade	39291	0.1614	4.1	-
K33/35-4.2DL Strip Blade	39293	0.1654	4.2	-
K33/35-4.3DL Strip Blade	18367	0.1693	4.3	-
K33/35-4.4DL Strip Blade	39295	0.1732	4.4	-
K33/35-4.5DL Strip Blade	39297	0.1772	4.5	-
K33/35-4.6DL Strip Blade	39299	0.1811	4.6	-
K33/35-4.7DL Strip Blade	39301	0.1850	4.7	-
K33/35-4.8DL Strip Blade	39303	0.1890	4.8	-
K33/35-4.9DL Strip Blade	39305	0.1929	4.9	-
K33/35-5.0DL Strip Blade	39307	0.1969	5.0	-
K33/35-5.1DL Strip Blade	39308	0.2008	5.1	-
K33/35-5.2DL Strip Blade	39310	0.2047	5.2	-
K33/35-5.3DL Strip Blade	39312	0.2087	5.3	-
K33/35-5.4DL Strip Blade	39314	0.2126	5.4	-
K33/35-5.5DL Strip Blade	39316	0.2165	5.5	-
K33/35-5.6DL Strip Blade	39318	0.2205	5.6	-
K33/35-5.7DL Strip Blade	39320	0.2244	5.7	-
K33/35-5.8DL Strip Blade	39322	0.2284	5.8	-
K33/35-5.9DL Strip Blade	39324	0.2323	5.9	-
K33/35-6.0DL Strip Blade	39326	0.2362	6.0	-