

Kappa 350 Series Blades

Used in the following Komax machines:

Kappa 350

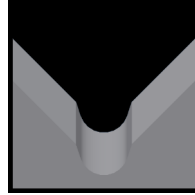
Available Kappa 350 Blade Form Geometries Include:



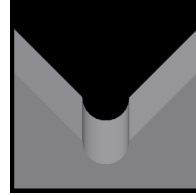
Universal



V-Style



M-Series®



Full-Radius



Straight

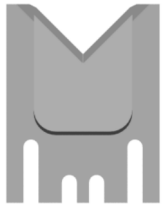


Jacket



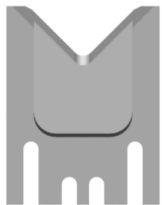
Multi-Conductor

Kappa 350 Universal Blades



Mechtrix Description	Mechtrix Part Number	Blade Form Diameter		OEM Part Number
		(in)	(mm)	
K350UV Stripping Blade	31947	-	-	0300569 0303731

Kappa 350 Radius V-Blades

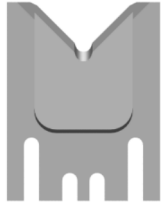


Mechtrix Description	Mechtrix Part Number	Blade Form Diameter		OEM Part Number
		(in)	(mm)	
K350-R1.0 Strip Blade	31948	0.07874	2.00	0320261 0320262
K350-R2.0 Strip Blade	31950	0.15748	4.00	0300106 0303732
K350-R3.0 Strip Blade	31952	0.23622	6.00	0300107 0303733
K350-R4.0 Strip Blade	30451	0.31496	8.00	0300108 0303734
K350-R5.0 Strip Blade	31954	0.39370	10.00	0300112 0303735
K350-R6.0 Strip Blade	31956	0.47244	12.00	0300113 0303736
K350-R7.0 Strip Blade	31958	0.55118	14.00	0300114 0303737
K350-R8.0 Strip Blade	34769	0.62992	16.00	0300115 0303738
K350-R9.0 Strip Blade	34770	0.70866	18.00	0300116 0303739
K350-R10.0 Strip Blade	34771	0.78740	20.00	0300117 0303740

Kappa 350 Series Blades

Used in the following Komax machines:

Kappa 350



Kappa 350 M-Series® Blades

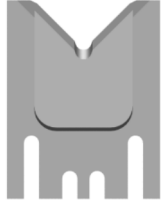
Mechtrix Description	Mechtrix Part Number	Blade Form Diameter (in)	Diameter (mm)	OEM Part Number
K350M-0.3 Strip Blade	38855	0.0118	0.3	-
K350M-0.4 Strip Blade	38856	0.0158	0.4	-
K350M-0.5 Strip Blade	38857	0.0197	0.5	-
K350M-0.6 Strip Blade	38858	0.0236	0.6	-
K350M-0.7 Strip Blade	38859	0.0276	0.7	-
K350M-0.8 Strip Blade	38860	0.0315	0.8	-
K350M-0.9 Strip Blade	38861	0.0354	0.9	-
K350M-1.0 Strip Blade	38862	0.0394	1.0	-
K350M-1.1 Strip Blade	38863	0.0433	1.1	-
K350M-1.2 Strip Blade	38864	0.0472	1.2	-
K350M-1.3 Strip Blade	38865	0.0512	1.3	-
K350M-1.4 Strip Blade	38866	0.0551	1.4	-
K350M-1.5 Strip Blade	38867	0.0591	1.5	-
K350M-1.6 Strip Blade	38868	0.0630	1.6	-
K350M-1.7 Strip Blade	38869	0.0669	1.7	-
K350M-1.8 Strip Blade	38870	0.0709	1.8	-
K350M-1.9 Strip Blade	38871	0.0748	1.9	-
K350M-2.0 Strip Blade	38872	0.0787	2.0	-
K350M-2.1 Strip Blade	38873	0.0827	2.1	-
K350M-2.2 Strip Blade	38874	0.0866	2.2	-
K350M-2.3 Strip Blade	38875	0.0906	2.3	-
K350M-2.4 Strip Blade	38876	0.0945	2.4	-
K350M-2.5 Strip Blade	38877	0.0984	2.5	-
K350M-2.6 Strip Blade	38878	0.1024	2.6	-
K350M-2.7 Strip Blade	38879	0.1063	2.7	-
K350M-2.8 Strip Blade	38880	0.1102	2.8	-
K350M-2.9 Strip Blade	38881	0.1142	2.9	-
K350M-3.0 Strip Blade	38882	0.1181	3.0	-
K350M-3.1 Strip Blade	38883	0.1221	3.1	-
K350M-3.2 Strip Blade	38884	0.1260	3.2	-
K350M-3.3 Strip Blade	38885	0.1299	3.3	-
K350M-3.4 Strip Blade	34892	0.1339	3.4	-
K350M-3.5 Strip Blade	38886	0.1378	3.5	-
K350M-3.6 Strip Blade	36735	0.1417	3.6	-
K350M-3.7 Strip Blade	38887	0.1457	3.7	-
K350M-3.8 Strip Blade	38888	0.1496	3.8	-
K350M-3.9 Strip Blade	38889	0.1535	3.9	-
K350M-4.0 Strip Blade	38890	0.1575	4.0	-
K350M-4.1 Strip Blade	38891	0.1614	4.1	-
K350M-4.2 Strip Blade	38892	0.1654	4.2	-
K350M-4.3 Strip Blade	38893	0.1693	4.3	-
K350M-4.4 Strip Blade	34893	0.1732	4.4	-
K350M-4.5 Strip Blade	36207	0.1772	4.5	-
K350M-4.6 Strip Blade	38894	0.1811	4.6	-
K350M-4.7 Strip Blade	38895	0.1850	4.7	-
K350M-4.8 Strip Blade	36736	0.1890	4.8	-
K350M-4.9 Strip Blade	33436	0.1929	4.9	-

Continued on Next Page

Kappa 350 Series Blades

Used in the following Komax machines:

Kappa 350



Kappa 350 M-Series® Blades (continued)

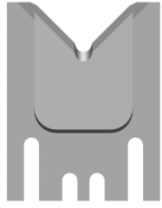
Mechtrix Description	Mechtrix Part Number	Blade Form (in)	Diameter (mm)	OEM Part Number
K350M-5.0 Strip Blade	36737	0.1969	5.0	-
K350M-5.1 Strip Blade	38896	0.2008	5.1	-
K350M-5.2 Strip Blade	38897	0.2047	5.2	-
K350M-5.3 Strip Blade	38898	0.2087	5.3	-
K350M-5.4 Strip Blade	38899	0.2126	5.4	-
K350M-5.5 Strip Blade	38900	0.2165	5.5	-
K350M-5.6 Strip Blade	33437	0.2205	5.6	-
K350M-5.7 Strip Blade	38901	0.2244	5.7	-
K350M-5.8 Strip Blade	38902	0.2284	5.8	-
K350M-5.9 Strip Blade	33439	0.2323	5.9	-
K350M-6.0 Strip Blade	38903	0.2362	6.0	-
K350M-6.1 Strip Blade	38904	0.2402	6.1	-
K350M-6.2 Strip Blade	38905	0.2441	6.2	-
K350M-6.3 Strip Blade	38906	0.2480	6.3	-
K350M-6.4 Strip Blade	38907	0.2520	6.4	-
K350M-6.5 Strip Blade	38908	0.2559	6.5	-
K350M-6.6 Strip Blade	38909	0.2598	6.6	-
K350M-6.7 Strip Blade	37860	0.2638	6.7	-
K350M-6.8 Strip Blade	38910	0.2677	6.8	-
K350M-6.9 Strip Blade	36209	0.2717	6.9	-
K350M-7.0 Strip Blade	34894	0.2756	7.0	-
K350M-7.1 Strip Blade	36739	0.2795	7.1	-
K350M-7.2 Strip Blade	38911	0.2835	7.2	-
K350M-7.3 Strip Blade	36738	0.2874	7.3	-
K350M-7.4 Strip Blade	38912	0.2913	7.4	-
K350M-7.5 Strip Blade	38913	0.2953	7.5	-
K350M-7.6 Strip Blade	38914	0.2992	7.6	-
K350M-7.7 Strip Blade	38915	0.3032	7.7	-
K350M-7.8 Strip Blade	38916	0.3071	7.8	-
K350M-7.9 Strip Blade	38917	0.3110	7.9	-
K350M-8.0 Strip Blade	38918	0.3150	8.0	-
K350M-8.1 Strip Blade	38919	0.3189	8.1	-
K350M-8.2 Strip Blade	38920	0.3228	8.2	-
K350M-8.3 Strip Blade	38921	0.3268	8.3	-
K350M-8.4 Strip Blade	37861	0.3307	8.4	-
K350M-8.5 Strip Blade	38922	0.3346	8.5	-
K350M-8.6 Strip Blade	36286	0.3386	8.6	-
K350M-8.7 Strip Blade	38923	0.3425	8.7	-
K350M-8.8 Strip Blade	36740	0.3465	8.8	-
K350M-8.9 Strip Blade	38924	0.3504	8.9	-
K350M-9.0 Strip Blade	34538	0.3543	9.0	-
K350M-9.1 Strip Blade	38925	0.3583	9.1	-
K350M-9.2 Strip Blade	33711	0.3622	9.2	-
K350M-9.3 Strip Blade	38926	0.3661	9.3	-
K350M-9.4 Strip Blade	37471	0.3701	9.4	-
K350M-9.5 Strip Blade	38927	0.3740	9.5	-

Continued on Next Page

Kappa 350 Series Blades

Used in the following Komax machines:

Kappa 350



Kappa 350 M-Series® Blades (continued)

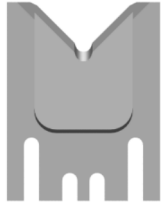
Mechtrix Description	Mechtrix Part Number	Blade Form (in)	Diameter (mm)	OEM Part Number
K350M-9.6 Strip Blade	38928	0.3780	9.6	-
K350M-9.7 Strip Blade	38929	0.3819	9.7	-
K350M-9.8 Strip Blade	38930	0.3858	9.8	-
K350M-9.9 Strip Blade	38931	0.3898	9.9	-
K350M-10.0 Strip Blade	38932	0.3937	10.0	-
K350M-10.1 Strip Blade	38933	0.3976	10.1	-
K350M-10.2 Strip Blade	38934	0.4016	10.2	-
K350M-10.3 Strip Blade	38935	0.4055	10.3	-
K350M-10.4 Strip Blade	38936	0.4094	10.4	-
K350M-10.5 Strip Blade	36383	0.4134	10.5	-
K350M-10.6 Strip Blade	38937	0.4173	10.6	-
K350M-10.7 Strip Blade	37472	0.4213	10.7	-
K350M-10.8 Strip Blade	38938	0.4252	10.8	-
K350M-10.9 Strip Blade	37475	0.4291	10.9	-
K350M-11.0 Strip Blade	38939	0.4331	11.0	-
K350M-11.1 Strip Blade	37473	0.4370	11.1	-
K350M-11.2 Strip Blade	38940	0.4409	11.2	-
K350M-11.3 Strip Blade	38941	0.4449	11.3	-
K350M-11.4 Strip Blade	38942	0.4488	11.4	-
K350M-11.5 Strip Blade	38943	0.4528	11.5	-
K350M-11.6 Strip Blade	38944	0.4567	11.6	-
K350M-11.7 Strip Blade	35185	0.4606	11.7	-
K350M-11.8 Strip Blade	36741	0.4646	11.8	-
K350M-11.9 Strip Blade	38945	0.4685	11.9	-
K350M-12.0 Strip Blade	38946	0.4724	12.0	-
K350M-12.1 Strip Blade	38947	0.4764	12.1	-
K350M-12.2 Strip Blade	38948	0.4803	12.2	-
K350M-12.3 Strip Blade	38949	0.4843	12.3	-
K350M-12.4 Strip Blade	33610	0.4882	12.4	-
K350M-12.5 Strip Blade	38950	0.4921	12.5	-
K350M-12.6 Strip Blade	37476	0.4961	12.6	-
K350M-12.7 Strip Blade	38951	0.5000	12.7	-
K350M-12.8 Strip Blade	38952	0.5039	12.8	-
K350M-12.9 Strip Blade	38953	0.5079	12.9	-
K350M-13.0 Strip Blade	38954	0.5118	13.0	-
K350M-13.1 Strip Blade	38955	0.5157	13.1	-
K350M-13.2 Strip Blade	38956	0.5197	13.2	-
K350M-13.3 Strip Blade	38957	0.5236	13.3	-
K350M-13.4 Strip Blade	36743	0.5276	13.4	-
K350M-13.5 Strip Blade	38958	0.5315	13.5	-
K350M-13.6 Strip Blade	38959	0.5354	13.6	-
K350M-13.7 Strip Blade	38960	0.5394	13.7	-
K350M-13.8 Strip Blade	38961	0.5433	13.8	-
K350M-13.9 Strip Blade	38962	0.5472	13.9	-
K350M-14.0 Strip Blade	38963	0.5512	14.0	-
K350M-14.1 Strip Blade	38964	0.5551	14.1	-

Continued on Next Page

Kappa 350 Series Blades

Used in the following Komax machines:

Kappa 350



Kappa 350 M-Series® Blades (continued)

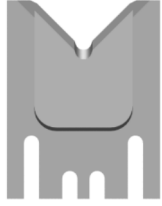
Mechtrix Description	Mechtrix Part Number	Blade Form (in)	Diameter (mm)	OEM Part Number
K350M-14.2 Strip Blade	36742	0.5591	14.2	-
K350M-14.3 Strip Blade	38965	0.5630	14.3	-
K350M-14.4 Strip Blade	38966	0.5669	14.4	-
K350M-14.5 Strip Blade	38967	0.5709	14.5	-
K350M-14.6 Strip Blade	38968	0.5748	14.6	-
K350M-14.7 Strip Blade	38969	0.5787	14.7	-
K350M-14.8 Strip Blade	38970	0.5827	14.8	-
K350M-14.9 Strip Blade	38971	0.5866	14.9	-
K350M-15.0 Strip Blade	38972	0.5906	15.0	-
K350M-15.1 Strip Blade	38973	0.5945	15.1	-
K350M-15.2 Strip Blade	38974	0.5984	15.2	-
K350M-15.3 Strip Blade	38975	0.6024	15.3	-
K350M-15.4 Strip Blade	38976	0.6063	15.4	-
K350M-15.5 Strip Blade	38977	0.6102	15.5	-
K350M-15.6 Strip Blade	38978	0.6142	15.6	-
K350M-15.7 Strip Blade	38979	0.6181	15.7	-
K350M-15.8 Strip Blade	38980	0.6220	15.8	-
K350M-15.9 Strip Blade	38981	0.6260	15.9	-
K350M-16.0 Strip Blade	38982	0.6299	16.0	-
K350M-16.1 Strip Blade	38983	0.6339	16.1	-
K350M-16.2 Strip Blade	38984	0.6378	16.2	-
K350M-16.3 Strip Blade	38985	0.6417	16.3	-
K350M-16.4 Strip Blade	34912	0.6457	16.4	-
K350M-16.5 Strip Blade	38986	0.6496	16.5	-
K350M-16.6 Strip Blade	38987	0.6535	16.6	-
K350M-16.7 Strip Blade	38988	0.6575	16.7	-
K350M-16.8 Strip Blade	38989	0.6614	16.8	-
K350M-16.9 Strip Blade	38990	0.6654	16.9	-
K350M-17.0 Strip Blade	34140	0.6693	17.0	-
K350M-17.1 Strip Blade	38991	0.6732	17.1	-
K350M-17.2 Strip Blade	35186	0.6772	17.2	-
K350M-17.3 Strip Blade	38992	0.6811	17.3	-
K350M-17.4 Strip Blade	38993	0.6850	17.4	-
K350M-17.5 Strip Blade	38994	0.6890	17.5	-
K350M-17.6 Strip Blade	38995	0.6929	17.6	-
K350M-17.7 Strip Blade	38996	0.6969	17.7	-
K350M-17.8 Strip Blade	38997	0.7008	17.8	-
K350M-17.9 Strip Blade	38998	0.7047	17.9	-
K350M-18.0 Strip Blade	38999	0.7087	18.0	-
K350M-18.1 Strip Blade	39000	0.7126	18.1	-
K350M-18.2 Strip Blade	39001	0.7165	18.2	-
K350M-18.3 Strip Blade	39002	0.7205	18.3	-
K350M-18.4 Strip Blade	37477	0.7244	18.4	-
K350M-18.5 Strip Blade	39003	0.7283	18.5	-
K350M-18.6 Strip Blade	39004	0.7323	18.6	-

Continued on Next Page

Kappa 350 Series Blades

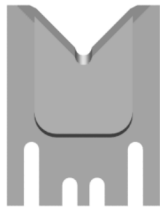
Used in the following Komax machines:

Kappa 350



Kappa 350 M-Series® Blades (continued)

Mechtrix Description	Mechtrix Part Number	Blade Form Diameter (in)	Diameter (mm)	OEM Part Number
K350M-18.7 Strip Blade	39005	0.7362	18.7	-
K350M-18.8 Strip Blade	39006	0.7402	18.8	-
K350M-18.9 Strip Blade	39007	0.7441	18.9	-
K350M-19.0 Strip Blade	34094	0.7480	19.0	-
K350M-19.1 Strip Blade	39008	0.7520	19.1	-
K350M-19.2 Strip Blade	39009	0.7559	19.2	-
K350M-19.3 Strip Blade	39010	0.7598	19.3	-
K350M-19.4 Strip Blade	39011	0.7638	19.4	-
K350M-19.5 Strip Blade	39012	0.7677	19.5	-
K350M-19.6 Strip Blade	39013	0.7717	19.6	-
K350M-19.7 Strip Blade	39014	0.7756	19.7	-
K350M-19.8 Strip Blade	39015	0.7795	19.8	-
K350M-19.9 Strip Blade	39016	0.7835	19.9	-
K350M-20.0 Strip Blade	39017	0.7874	20.0	-



Kappa 350 Full-Radius Blades

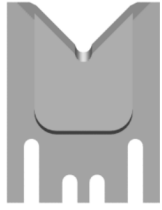
Mechtrix Description	Mechtrix Part Number	Blade Form Diameter (in)	Diameter (mm)	OEM Part Number
K350-0.3D Strip Blade	39026	0.0118	0.3	-
K350-0.4D Strip Blade	39027	0.0158	0.4	-
K350-0.5D Strip Blade	39028	0.0197	0.5	-
K350-0.6D Strip Blade	39029	0.0236	0.6	-
K350-0.7D Strip Blade	39030	0.0276	0.7	-
K350-0.8D Strip Blade	39031	0.0315	0.8	-
K350-0.9D Strip Blade	39032	0.0354	0.9	-
K350-1.0D Strip Blade	31960	0.0394	1.0	0302326
K350-1.1D Strip Blade	39033	0.0433	1.1	-
K350-1.2D Strip Blade	39034	0.0472	1.2	-
K350-1.3D Strip Blade	39035	0.0512	1.3	-
K350-1.4D Strip Blade	39036	0.0551	1.4	-
K350-1.5D Strip Blade	31961	0.0591	1.5	-
K350-1.6D Strip Blade	39037	0.0630	1.6	-
K350-1.7D Strip Blade	39038	0.0669	1.7	-
K350-1.8D Strip Blade	39039	0.0709	1.8	-
K350-1.9D Strip Blade	39040	0.0748	1.9	-
K350-2.0D Strip Blade	31962	0.0787	2.0	0302327
K350-2.1D Strip Blade	39041	0.0827	2.1	-
K350-2.2D Strip Blade	36042	0.0866	2.2	-
K350-2.3D Strip Blade	39043	0.0906	2.3	-
K350-2.4D Strip Blade	39044	0.0945	2.4	-
K350-2.5D Strip Blade	31963	0.0984	2.5	-
K350-2.6D Strip Blade	39045	0.1024	2.6	-
K350-2.7D Strip Blade	39046	0.1063	2.7	-

Continued on Next Page

Kappa 350 Series Blades

Used in the following Komax machines:

Kappa 350



Kappa 350 Full-Radius Blades (continued)

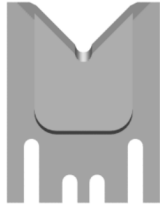
Mechtrix Description	Mechtrix Part Number	Blade Form (in)	Diameter (mm)	OEM Part Number
K350-2.8D Strip Blade	39047	0.1102	2.8	-
K350-2.9D Strip Blade	39048	0.1142	2.9	-
K350-3.0D Strip Blade	31964	0.1181	3.0	0302328
K350-3.1D Strip Blade	39049	0.1221	3.1	-
K350-3.2D Strip Blade	39050	0.1260	3.2	-
K350-3.3D Strip Blade	39051	0.1299	3.3	-
K350-3.4D Strip Blade	39052	0.1339	3.4	-
K350-3.5D Strip Blade	31965	0.1378	3.5	-
K350-3.6D Strip Blade	37762	0.1417	3.6	-
K350-3.7D Strip Blade	39053	0.1457	3.7	-
K350-3.8D Strip Blade	39054	0.1496	3.8	-
K350-3.9D Strip Blade	39055	0.1535	3.9	-
K350-4.0D Strip Blade	31966	0.1575	4.0	0302329 0303741
K350-4.1D Strip Blade	39056	0.1614	4.1	-
K350-4.2D Strip Blade	39057	0.1654	4.2	-
K350-4.3D Strip Blade	39058	0.1693	4.3	-
K350-4.4D Strip Blade	39059	0.1732	4.4	-
K350-4.5D Strip Blade	31967	0.1772	4.5	-
K350-4.6D Strip Blade	39060	0.1811	4.6	-
K350-4.7D Strip Blade	39061	0.1850	4.7	-
K350-4.8D Strip Blade	39062	0.1890	4.8	-
K350-4.9D Strip Blade	39063	0.1929	4.9	-
K350-5.0D Strip Blade	31916	0.1969	5.0	0302330 0303742
K350-5.1D Strip Blade	39064	0.2008	5.1	-
K350-5.2D Strip Blade	39065	0.2047	5.2	-
K350-5.3D Strip Blade	39066	0.2087	5.3	-
K350-5.4D Strip Blade	39067	0.2126	5.4	-
K350-5.5D Strip Blade	31968	0.2165	5.5	-
K350-5.6D Strip Blade	39068	0.2205	5.6	-
K350-5.7D Strip Blade	39069	0.2244	5.7	-
K350-5.8D Strip Blade	39070	0.2284	5.8	-
K350-5.9D Strip Blade	39071	0.2323	5.9	-
K350-6.0D Strip Blade	31969	0.2362	6.0	0302331 0303743
K350-6.1D Strip Blade	39072	0.2402	6.1	-
K350-6.2D Strip Blade	39073	0.2441	6.2	-
K350-6.3D Strip Blade	39074	0.2480	6.3	-
K350-6.4D Strip Blade	39075	0.2520	6.4	-
K350-6.5D Strip Blade	31970	0.2559	6.5	-
K350-6.6D Strip Blade	39076	0.2598	6.6	-
K350-6.7D Strip Blade	39077	0.2638	6.7	-
K350-6.8D Strip Blade	39078	0.2677	6.8	-
K350-6.9D Strip Blade	39079	0.2717	6.9	-

Continued on Next Page

Kappa 350 Series Blades

Used in the following Komax machines:

Kappa 350



Kappa 350 Full-Radius Blades (continued)

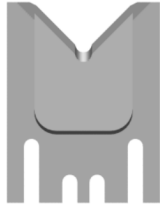
Mechtrix Description	Mechtrix Part Number	Blade Form (in)	Diameter (mm)	OEM Part Number
K350-7.0D Strip Blade	31971	0.2756	7.0	0302332 0303744
K350-7.1D Strip Blade	39080	0.2795	7.1	-
K350-7.2D Strip Blade	39081	0.2835	7.2	-
K350-7.3D Strip Blade	39082	0.2874	7.3	-
K350-7.4D Strip Blade	39083	0.2913	7.4	-
K350-7.5D Strip Blade	31972	0.2953	7.5	-
K350-7.6D Strip Blade	39084	0.2992	7.6	-
K350-7.7D Strip Blade	39085	0.3031	7.7	-
K350-7.8D Strip Blade	39086	0.3071	7.8	-
K350-7.9D Strip Blade	39087	0.3110	7.9	-
K350-8.0D Strip Blade	31973	0.3150	8.0	0302333 0303746
K350-8.1D Strip Blade	39088	0.3189	8.1	-
K350-8.2D Strip Blade	39089	0.3228	8.2	-
K350-8.3D Strip Blade	39090	0.3268	8.3	-
K350-8.4D Strip Blade	39091	0.3307	8.4	-
K350-8.5D Strip Blade	31974	0.3346	8.5	-
K350-8.6D Strip Blade	39092	0.3386	8.6	-
K350-8.7D Strip Blade	39093	0.3425	8.7	-
K350-8.8D Strip Blade	39094	0.3465	8.8	-
K350-8.9D Strip Blade	39095	0.3504	8.9	-
K350-9.0D Strip Blade	31975	0.3543	9.0	0302334 0303747
K350-9.1D Strip Blade	39096	0.3583	9.1	-
K350-9.2D Strip Blade	39097	0.3622	9.2	-
K350-9.3D Strip Blade	39098	0.3661	9.3	-
K350-9.4D Strip Blade	39099	0.3701	9.4	-
K350-9.5D Strip Blade	31976	0.3740	9.5	-
K350-9.6D Strip Blade	39100	0.3780	9.6	-
K350-9.7D Strip Blade	39101	0.3819	9.7	-
K350-9.8D Strip Blade	39102	0.3858	9.8	-
K350-9.9D Strip Blade	39103	0.3898	9.9	-
K350-10.0D Strip Blade	31977	0.3937	10.0	0302335 0303748
K350-10.1D Strip Blade	39104	0.3976	10.1	-
K350-10.2D Strip Blade	39105	0.4016	10.2	-
K350-10.3D Strip Blade	39106	0.4055	10.3	-
K350-10.4D Strip Blade	39107	0.4094	10.4	-
K350-10.5D Strip Blade	31978	0.4134	10.5	-
K350-10.6D Strip Blade	39108	0.4173	10.6	-
K350-10.7D Strip Blade	39109	0.4213	10.7	-
K350-10.8D Strip Blade	39110	0.4252	10.8	-
K350-10.9D Strip Blade	39111	0.4291	10.9	-

Continued on Next Page

Kappa 350 Series Blades

Used in the following Komax machines:

Kappa 350



Kappa 350 Full-Radius Blades (continued)

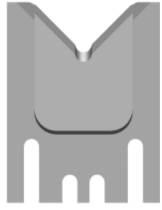
Mechtrix Description	Mechtrix Part Number	Blade Form (in)	Diameter (mm)	OEM Part Number
K350-11.0D Strip Blade	31979	0.4331	11.0	0302336 0303749
K350-11.1D Strip Blade	39112	0.4370	11.1	-
K350-11.2D Strip Blade	39113	0.4409	11.2	-
K350-11.3D Strip Blade	39114	0.4449	11.3	-
K350-11.4D Strip Blade	39115	0.4488	11.4	-
K350-11.5D Strip Blade	31980	0.4528	11.5	-
K350-11.6D Strip Blade	39116	0.4567	11.6	-
K350-11.7D Strip Blade	39117	0.4606	11.7	-
K350-11.8D Strip Blade	39118	0.4646	11.8	-
K350-11.9D Strip Blade	39119	0.4685	11.9	-
K350-12.0D Strip Blade	31981	0.4724	12.0	0302337 0303750
K350-12.1D Strip Blade	39120	0.4764	12.1	-
K350-12.2D Strip Blade	31921	0.4803	12.2	-
K350-12.3D Strip Blade	39122	0.4843	12.3	-
K350-12.4D Strip Blade	39123	0.4882	12.4	-
K350-12.5D Strip Blade	31982	0.4921	12.5	-
K350-12.6D Strip Blade	39124	0.4961	12.6	-
K350-12.7D Strip Blade	39125	0.5000	12.7	-
K350-12.8D Strip Blade	39126	0.5039	12.8	-
K350-12.9D Strip Blade	39127	0.5079	12.9	-
K350-13.0D Strip Blade	31983	0.5118	13.0	0302338 0303751
K350-13.1D Strip Blade	39128	0.5157	13.1	-
K350-13.2D Strip Blade	39129	0.5197	13.2	-
K350-13.3D Strip Blade	39130	0.5236	13.3	-
K350-13.4D Strip Blade	39131	0.5276	13.4	-
K350-13.5D Strip Blade	31984	0.5315	13.5	-
K350-13.6D Strip Blade	39132	0.5354	13.6	-
K350-13.7D Strip Blade	39133	0.5394	13.7	-
K350-13.8D Strip Blade	39134	0.5433	13.8	-
K350-13.9D Strip Blade	39135	0.5472	13.9	-
K350-14.0D Strip Blade	31985	0.5512	14.0	0302339 0303752
K350-14.1D Strip Blade	39136	0.5551	14.1	-
K350-14.2D Strip Blade	39137	0.5591	14.2	-
K350-14.3D Strip Blade	39138	0.5630	14.3	-
K350-14.4D Strip Blade	39139	0.5669	14.4	-
K350-14.5D Strip Blade	31986	0.5709	14.5	-
K350-14.6D Strip Blade	39140	0.5748	14.6	-
K350-14.7D Strip Blade	39141	0.5787	14.7	-
K350-14.8D Strip Blade	39142	0.5827	14.8	-
K350-14.9D Strip Blade	39143	0.5866	14.9	-

Continued on Next Page

Kappa 350 Series Blades

Used in the following Komax machines:

Kappa 350



Kappa 350 Full-Radius Blades (continued)

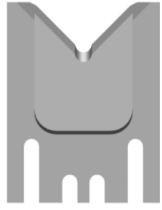
Mechtrix Description	Mechtrix Part Number	Blade Form (in)	Diameter (mm)	OEM Part Number
K350-15.0D Strip Blade	31987	0.5906	15.0	0302340 0303753
K350-15.1D Strip Blade	39144	0.5945	15.1	-
K350-15.2D Strip Blade	39145	0.5984	15.2	-
K350-15.3D Strip Blade	39146	0.6024	15.3	-
K350-15.4D Strip Blade	39147	0.6063	15.4	-
K350-15.5D Strip Blade	34772	0.6102	15.5	-
K350-15.6D Strip Blade	39148	0.6142	15.6	-
K350-15.7D Strip Blade	39149	0.6181	15.7	-
K350-15.8D Strip Blade	39150	0.6220	15.8	-
K350-15.9D Strip Blade	39151	0.6260	15.9	-
K350-16.0D Strip Blade	34773	0.6299	16.0	0302341 0303754
K350-16.1D Strip Blade	39152	0.6339	16.1	-
K350-16.2D Strip Blade	39153	0.6378	16.2	-
K350-16.3D Strip Blade	39154	0.6417	16.3	-
K350-16.4D Strip Blade	39155	0.6457	16.4	-
K350-16.5D Strip Blade	34774	0.6496	16.5	-
K350-16.6D Strip Blade	39156	0.6535	16.6	-
K350-16.7D Strip Blade	39157	0.6575	16.7	-
K350-16.8D Strip Blade	39158	0.6614	16.8	-
K350-16.9D Strip Blade	39159	0.6654	16.9	-
K350-17.0D Strip Blade	34775	0.6693	17.0	0303284 0303755
K350-17.1D Strip Blade	39160	0.6732	17.1	-
K350-17.2D Strip Blade	39161	0.6772	17.2	-
K350-17.3D Strip Blade	39162	0.6811	17.3	-
K350-17.4D Strip Blade	39163	0.6850	17.4	-
K350-17.5D Strip Blade	34776	0.6890	17.5	-
K350-17.6D Strip Blade	39164	0.6929	17.6	-
K350-17.7D Strip Blade	39165	0.6969	17.7	-
K350-17.8D Strip Blade	39166	0.7008	17.8	-
K350-17.9D Strip Blade	39167	0.7047	17.9	-
K350-18.0D Strip Blade	34777	0.7087	18.0	0303285 0303756
K350-18.1D Strip Blade	39168	0.7126	18.1	-
K350-18.2D Strip Blade	39169	0.7165	18.2	-
K350-18.3D Strip Blade	39170	0.7205	18.3	-
K350-18.4D Strip Blade	39171	0.7244	18.4	-
K350-18.5D Strip Blade	344778	0.7283	18.5	-
K350-18.6D Strip Blade	39172	0.7323	18.6	-
K350-18.7D Strip Blade	39173	0.7362	18.7	-
K350-18.8D Strip Blade	39174	0.7402	18.8	-
K350-18.9D Strip Blade	39175	0.7441	18.9	-

Continued on Next Page

Kappa 350 Series Blades

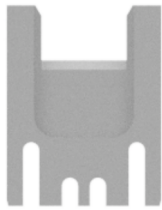
Used in the following Komax machines:

Kappa 350



Kappa 350 Full-Radius Blades (continued)

Mechtrix Description	Mechtrix Part Number	Blade Form (in)	Diameter (mm)	OEM Part Number
K350-19.0D Strip Blade	34779	0.7480	19.0	0303286 0303757
K350-19.1D Strip Blade	39176	0.7520	19.1	-
K350-19.2D Strip Blade	39177	0.7559	19.2	-
K350-19.3D Strip Blade	39178	0.7598	19.3	-
K350-19.4D Strip Blade	39179	0.7638	19.4	-
K350-19.5D Strip Blade	34780	0.7677	19.5	-
K350-19.6D Strip Blade	39180	0.7717	19.6	-
K350-19.7D Strip Blade	39181	0.7756	19.7	-
K350-19.8D Strip Blade	39182	0.7795	19.8	-
K350-19.9D Strip Blade	39183	0.7835	19.9	-
K350-20.0D Strip Blade	34781	0.7874	20.0	0303287 0303758



Kappa 350 Straight Blades

Straight Blades are available for the Kappa 350 machines.

[Please Contact Mechtrix for Assistance](#)



Kappa 350 Jacket Blades

Jacket Blades are available for the Kappa 350 machines.

[Please Contact Mechtrix for Assistance](#)



Kappa 350 Multi-Conductor Blades

Multi-Conductor Blades are available for the Kappa 350 machines.

[Please Contact Mechtrix for Assistance](#)