

# Kappa 310 Series Blades

Used in the following Komax machines:

Kappa 310

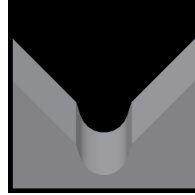
Available Kappa 310 Blade Form Geometries Include:



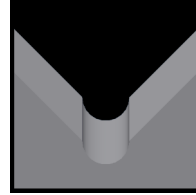
Universal



V-Style



M-Series®



Full-Radius



Straight



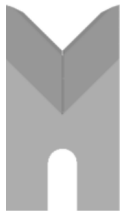
Jacket



Multi-Conductor



Steel-Cut



## Kappa 310 Universal Blades

Mechtrix Description	Mechtrix Part Number	Blade Form Diameter		OEM Part Number
		(in)	(mm)	
K310UV Stripping Blade (Carbide)	32365-02	-	-	0084667 0310527
K310UV Stripping Blade (D2)	32365-01	-	-	-



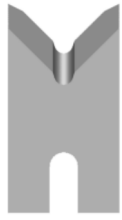
## Kappa 310 V-Style Blades

Mechtrix Description	Mechtrix Part Number	Blade Form Diameter		OEM Part Number
		(in)	(mm)	
K310-R0.5 Strip Blade	32600-02	0.03937	1.00	0310529 0310530
K310-R1.0 Strip Blade	32624-02	0.07874	2.00	0310531 0310532
K310-R1.5 Strip Blade	32625-02	0.11811	3.00	0310533 0031534
K310-R2.0 Strip Blade	32626-02	0.15748	4.00	0310535 0310536
K310-R2.5 Strip Blade	33952-02	0.19685	5.00	0310537 0310538
K310-R3.0 Strip Blade	33953-02	0.23622	6.00	0310539 0310540

# Kappa 310 Series Blades

Used in the following Komax machines:

Kappa 310



## Kappa 310 M-Series® Blades

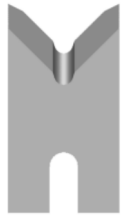
Mechtrix Description	Mechtrix Part Number	Blade Form (in)	Diameter (mm)	OEM Part Number
K310M-0.3 Strip Blade	35773	0.0118	0.3	-
K310M-0.4 Strip Blade	32830	0.0158	0.4	-
K310M-0.5 Strip Blade	34222	0.0197	0.5	-
K310M-0.6 Strip Blade	33334	0.0236	0.6	-
K310M-0.7 Strip Blade	33529	0.0276	0.7	-
K310M-0.8 Strip Blade	34158	0.0315	0.8	-
K310M-0.9 Strip Blade	38784	0.0354	0.9	-
K310M-1.0 Strip Blade	34362	0.0394	1.0	-
K310M-1.1 Strip Blade	35889	0.0433	1.1	-
K310M-1.2 Strip Blade	32384	0.0472	1.2	-
K310M-1.3 Strip Blade	33549	0.0512	1.3	-
K310M-1.4 Strip Blade	38785	0.0551	1.4	-
K310M-1.5 Strip Blade	34231	0.0591	1.5	-
K310M-1.6 Strip Blade	38786	0.0630	1.6	-
K310M-1.7 Strip Blade	35861	0.0669	1.7	-
K310M-1.8 Strip Blade	34534	0.0709	1.8	-
K310M-1.9 Strip Blade	34414	0.0748	1.9	-
K310M-2.0 Strip Blade	37479	0.0787	2.0	-
K310M-2.1 Strip Blade	35862	0.0827	2.1	-
K310M-2.2 Strip Blade	37267	0.0866	2.2	-
K310M-2.3 Strip Blade	38787	0.0906	2.3	-
K310M-2.4 Strip Blade	34535	0.0945	2.4	-
K310M-2.5 Strip Blade	33679	0.0984	2.5	-
K310M-2.6 Strip Blade	37486	0.1024	2.6	-
K310M-2.7 Strip Blade	37270	0.1063	2.7	-
K310M-2.8 Strip Blade	38788	0.1102	2.8	-
K310M-2.9 Strip Blade	37268	0.1142	2.9	-
K310M-3.0 Strip Blade	37746	0.1181	3.0	-
K310M-3.1 Strip Blade	38789	0.1221	3.1	-
K310M-3.2 Strip Blade	37266	0.1260	3.2	-
K310M-3.3 Strip Blade	37886	0.1299	3.3	-
K310M-3.4 Strip Blade	38790	0.1339	3.4	-
K310M-3.5 Strip Blade	37269	0.1378	3.5	-
K310M-3.6 Strip Blade	35919	0.1417	3.6	-
K310M-3.7 Strip Blade	34206	0.1457	3.7	-
K310M-3.8 Strip Blade	38791	0.1496	3.8	-
K310M-3.9 Strip Blade	37487	0.1535	3.9	-
K310M-4.0 Strip Blade	38792	0.1575	4.0	-
K310M-4.1 Strip Blade	37263	0.1614	4.1	-
K310M-4.2 Strip Blade	38793	0.1654	4.2	-
K310M-4.3 Strip Blade	37265	0.1693	4.3	-
K310M-4.4 Strip Blade	38794	0.1732	4.4	-
K310M-4.5 Strip Blade	38795	0.1772	4.5	-
K310M-4.6 Strip Blade	38796	0.1811	4.6	-
K310M-4.7 Strip Blade	38797	0.1850	4.7	-
K310M-4.8 Strip Blade	37401	0.1890	4.8	-
K310M-4.9 Strip Blade	38798	0.1929	4.9	-

Continued on Next Page

# Kappa 310 Series Blades

Used in the following Komax machines:

Kappa 310



## Kappa 310 M-Series® Blades

Mechtrix Description	Mechtrix Part Number	Blade Form Diameter		OEM Part Number
		(in)	(mm)	
K310M-5.0 Strip Blade	38799	0.1969	5.0	-
K310M-5.1 Strip Blade	38800	0.2008	5.1	-
K310M-5.2 Strip Blade	38801	0.2047	5.2	-
K310M-5.3 Strip Blade	38802	0.2087	5.3	-
K310M-5.4 Strip Blade	38803	0.2126	5.4	-
K310M-5.5 Strip Blade	38804	0.2165	5.5	-
K310M-5.6 Strip Blade	33457	0.2205	5.6	-
K310M-5.7 Strip Blade	38805	0.2244	5.7	-
K310M-5.8 Strip Blade	38806	0.2284	5.8	-
K310M-5.9 Strip Blade	38807	0.2323	5.9	-
K310M-6.0 Strip Blade	38808	0.2362	6.0	-



## Kappa 310 Full Radius Blades

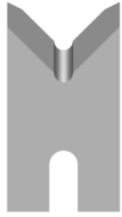
Mechtrix Description	Mechtrix Part Number	Blade Form Diameter		OEM Part Number
		(in)	(mm)	
K310-0.3D Strip Blade	38809	0.0118	0.3	-
K310-0.4D Strip Blade	38810	0.0158	0.4	310697
K310-0.5D Strip Blade	38811	0.0197	0.5	-
K310-0.6D Strip Blade	36987	0.0236	0.6	-
K310-0.7D Strip Blade	34937	0.0276	0.7	-
K310-0.8D Strip Blade	36988	0.0315	0.8	-
K310-0.9D Strip Blade	38812	0.0354	0.9	-
K310-1.0D Strip Blade	36989	0.0394	1.0	-
K310-1.1D Strip Blade	36990	0.0433	1.1	-
K310-1.2D Strip Blade	37529	0.0472	1.2	-
K310-1.3D Strip Blade	38813	0.0512	1.3	-
K310-1.4D Strip Blade	36991	0.0551	1.4	-
K310-1.5D Strip Blade	38814	0.0591	1.5	-
K310-1.6D Strip Blade	38815	0.0630	1.6	-
K310-1.7D Strip Blade	36992	0.0669	1.7	-
K310-1.8D Strip Blade	38816	0.0709	1.8	-
K310-1.9D Strip Blade	37530	0.0748	1.9	-
K310-2.0D Strip Blade	36993	0.0787	2.0	-
K310-2.1D Strip Blade	38817	0.0827	2.1	-
K310-2.2D Strip Blade	38818	0.0866	2.2	-
K310-2.3D Strip Blade	38819	0.0906	2.3	-
K310-2.4D Strip Blade	38820	0.0945	2.4	-
K310-2.5D Strip Blade	38821	0.0984	2.5	-
K310-2.6D Strip Blade	38822	0.1024	2.6	-
K310-2.7D Strip Blade	38823	0.1063	2.7	-
K310-2.8D Strip Blade	38824	0.1102	2.8	-
K310-2.9D Strip Blade	38825	0.1142	2.9	-
K310-3.0D Strip Blade	38826	0.1181	3.0	-
K310-3.1D Strip Blade	38827	0.1221	3.1	-
K310-3.2D Strip Blade	38828	0.1260	3.2	-

Continued on Next Page

# Kappa 310 Series Blades

Used in the following Komax machines:

Kappa 310



## Kappa 310 Full Radius Blades (continued)

Mechtrix Description	Mechtrix Part Number	Blade Form (in)	Diameter (mm)	OEM Part Number
K310-3.3D Strip Blade	38829	0.1299	3.3	-
K310-3.4D Strip Blade	35166	0.1339	3.4	-
K310-3.5D Strip Blade	38830	0.1378	3.5	-
K310-3.6D Strip Blade	38831	0.1417	3.6	-
K310-3.7D Strip Blade	38832	0.1457	3.7	-
K310-3.8D Strip Blade	38833	0.1496	3.8	-
K310-3.9D Strip Blade	38834	0.1535	3.9	-
K310-4.0D Strip Blade	38835	0.1575	4.0	-
K310-4.1D Strip Blade	38836	0.1614	4.1	-
K310-4.2D Strip Blade	38837	0.1654	4.2	-
K310-4.3D Strip Blade	38838	0.1693	4.3	-
K310-4.4D Strip Blade	38839	0.1732	4.4	-
K310-4.5D Strip Blade	38840	0.1772	4.5	-
K310-4.6D Strip Blade	38841	0.1811	4.6	-
K310-4.7D Strip Blade	32563	0.1850	4.7	-
K310-4.8D Strip Blade	38842	0.1890	4.8	-
K310-4.9D Strip Blade	38843	0.1929	4.9	-
K310-5.0D Strip Blade	38844	0.1969	5.0	-
K310-5.1D Strip Blade	38845	0.2008	5.1	-
K310-5.2D Strip Blade	38846	0.2047	5.2	-
K310-5.3D Strip Blade	38847	0.2087	5.3	-
K310-5.4D Strip Blade	38848	0.2126	5.4	-
K310-5.5D Strip Blade	38849	0.2165	5.5	-
K310-5.6D Strip Blade	38850	0.2205	5.6	-
K310-5.7D Strip Blade	38851	0.2244	5.7	-
K310-5.8D Strip Blade	38852	0.2284	5.8	-
K310-5.9D Strip Blade	38853	0.2323	5.9	-
K310-6.0D Strip Blade	38854	0.2362	6.0	-



## Kappa 310 Straight Blades

Mechtrix Description	Mechtrix Part Number	Blade Form (in)	Diameter (mm)	OEM Part Number
K310SS Straight Strip Blade (W=6)	35251	-	-	0317460
K310SS Straight Strip Blade (W=8)	37409	-	-	0320204



## Kappa 310 Jacket Blades

Jacket Blades are available for the Kappa 310 machines.

**Please Contact Mechtrix for Assistance**

# Kappa 310 Series Blades

Used in the following *Komax* machines:

Kappa 310



## Kappa 310 Multi-Conductor Blades

Multi-Conductor Blades are available for the Kappa 310 machines.

[Please Contact Mechtrix for Assistance](#)



## Kappa 310 Steel-Cut Blades

Mechtrix Description	Mechtrix Part Number	Blade Form (in)	Diameter (mm)	OEM Part Number
K310 Steel-Cut V-Blade	35872	-	-	-
K310 Steel-Cut Shear Blade	35873	-	-	-