

Kappa 240 Series Blades

Used in the following Komax machines:

Kappa 240

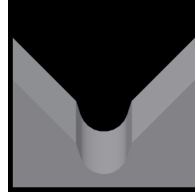
Available Kappa 240 Blade Form Geometries Include:



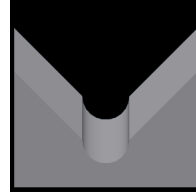
Universal



V-Style



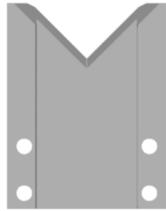
M-Series®



Full-Radius

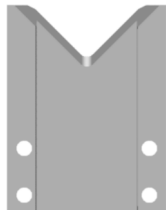


Slitting



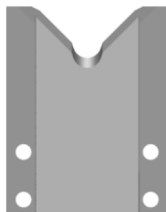
Kappa 240 Universal Stripping Blades

Mechtrix Description	Mechtrix	Blade Form Diameter		OEM
	Part Number	(in)	(mm)	Part Number
K240UV Universal Strip Blade (D2)	24467	-	-	0053884
K240UV-HD Universal Strip Blade (D2)	29184	-	-	0062765
K240UV-Double Angle Universal Strip Blade (D2)	29185	-	-	0066350



Kappa 240 V-Style Blades

Mechtrix Description	Mechtrix Part Number	Blade Form Diameter		OEM
		(in)	(mm)	Part Number
K240-R2.0 Radius Strip Blade (D2)	31379	0.15748	4.00	0058233
K240-R3.0 Radius Strip Blade (D2)	29487	0.23622	6.00	0058235
K240-R4.0 Radius Strip Blade (D2)	25936	0.31496	8.00	0058237
K240-R6.0 Radius Strip Blade (D2)	31504	0.47244	12.00	-



Kappa 240 M-Series® Blades

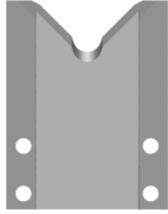
Mechtrix Description	Mechtrix Part Number	Blade Form Diameter		OEM
		(in)	(mm)	Part Number
K240M-0.3 Strip Blade	38526	0.0118	0.3	-
K240M-0.4 Strip Blade	38527	0.0158	0.4	-
K240M-0.5 Strip Blade	38528	0.0197	0.5	-
K240M-0.6 Strip Blade	38529	0.0236	0.6	-
K240M-0.7 Strip Blade	38530	0.0276	0.7	-
K240M-0.8 Strip Blade	38531	0.0315	0.8	-
K240M-0.9 Strip Blade	38532	0.0354	0.9	-
K240M-1.0 Strip Blade	36212	0.0394	1.0	-
K240M-1.1 Strip Blade	38533	0.0433	1.1	-
K240M-1.2 Strip Blade	38534	0.0472	1.2	-
K240M-1.3 Strip Blade	38535	0.0512	1.3	-
K240M-1.4 Strip Blade	38536	0.0551	1.4	-
K240M-1.5 Strip Blade	38537	0.0591	1.5	-
K240M-1.6 Strip Blade	38538	0.0630	1.6	-
K240M-1.7 Strip Blade	38539	0.0669	1.7	-
K240M-1.8 Strip Blade	38540	0.0709	1.8	-
K240M-1.9 Strip Blade	38541	0.0748	1.9	-
K240M-2.0 Strip Blade	38542	0.0787	2.0	-
K240M-2.1 Strip Blade	38543	0.0827	2.1	-
K240M-2.2 Strip Blade	38544	0.0866	2.2	-
K240M-2.3 Strip Blade	38545	0.0906	2.3	-

Continued on Next Page

Kappa 240 Series Blades

Used in the following Komax machines:

Kappa 240



Kappa 240 M-Series® Blades (continued)

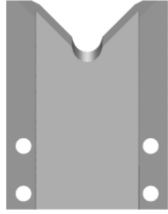
Mechtrix Description	Mechtrix Part Number	Blade Form (in)	Diameter (mm)	OEM Part Number
K240M-2.4 Strip Blade	38546	0.0945	2.4	-
K240M-2.5 Strip Blade	38547	0.0984	2.5	-
K240M-2.6 Strip Blade	38548	0.1024	2.6	-
K240M-2.7 Strip Blade	38549	0.1063	2.7	-
K240M-2.8 Strip Blade	38550	0.1102	2.8	-
K240M-2.9 Strip Blade	38551	0.1142	2.9	-
K240M-3.0 Strip Blade	38552	0.1181	3.0	-
K240M-3.1 Strip Blade	38553	0.1221	3.1	-
K240M-3.2 Strip Blade	38554	0.1260	3.2	-
K240M-3.3 Strip Blade	31546	0.1299	3.3	-
K240M-3.4 Strip Blade	38555	0.1339	3.4	-
K240M-3.5 Strip Blade	38556	0.1378	3.5	-
K240M-3.6 Strip Blade	38557	0.1417	3.6	-
K240M-3.7 Strip Blade	38558	0.1457	3.7	-
K240M-3.8 Strip Blade	29729	0.1496	3.8	-
K240M-3.9 Strip Blade	38559	0.1535	3.9	-
K240M-4.0 Strip Blade	35633	0.1575	4.0	-
K240M-4.1 Strip Blade	38560	0.1614	4.1	-
K240M-4.2 Strip Blade	38561	0.1654	4.2	-
K240M-4.3 Strip Blade	35636	0.1693	4.3	-
K240M-4.4 Strip Blade	38562	0.1732	4.4	-
K240M-4.5 Strip Blade	35635	0.1772	4.5	-
K240M-4.6 Strip Blade	30219	0.1811	4.6	-
K240M-4.7 Strip Blade	38563	0.1850	4.7	-
K240M-4.8 Strip Blade	34464	0.1890	4.8	-
K240M-4.9 Strip Blade	38564	0.1929	4.9	-
K240M-5.0 Strip Blade	38565	0.1969	5.0	-
K240M-5.1 Strip Blade	35634	0.2008	5.1	-
K240M-5.2 Strip Blade	38566	0.2047	5.2	-
K240M-5.3 Strip Blade	34843	0.2087	5.3	-
K240M-5.4 Strip Blade	38567	0.2126	5.4	-
K240M-5.5 Strip Blade	29728	0.2165	5.5	-
K240M-5.6 Strip Blade	38568	0.2205	5.6	-
K240M-5.7 Strip Blade	38569	0.2244	5.7	-
K240M-5.8 Strip Blade	38570	0.2284	5.8	-
K240M-5.9 Strip Blade	38571	0.2323	5.9	-
K240M-6.0 Strip Blade	38572	0.2362	6.0	-
K240M-6.1 Strip Blade	38573	0.2402	6.1	-
K240M-6.2 Strip Blade	38574	0.2441	6.2	-
K240M-6.3 Strip Blade	38575	0.2480	6.3	-
K240M-6.4 Strip Blade	38576	0.2520	6.4	-
K240M-6.5 Strip Blade	29727	0.2559	6.5	-
K240M-6.6 Strip Blade	38577	0.2598	6.6	-
K240M-6.7 Strip Blade	38578	0.2638	6.7	-
K240M-6.8 Strip Blade	38579	0.2677	6.8	-
K240M-6.9 Strip Blade	38580	0.2717	6.9	-
K240M-7.0 Strip Blade	28115	0.2756	7.0	-

Continued on Next Page

Kappa 240 Series Blades

Used in the following Komax machines:

Kappa 240



Kappa 240 M-Series® Blades (continued)

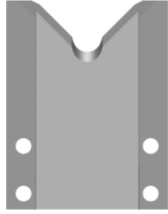
Mechtrix Description	Mechtrix Part Number	Blade Form (in)	Diameter (mm)	OEM Part Number
K240M-7.1 Strip Blade	38581	0.2795	7.1	-
K240M-7.2 Strip Blade	38582	0.2835	7.2	-
K240M-7.3 Strip Blade	29726	0.2874	7.3	-
K240M-7.4 Strip Blade	38583	0.2913	7.4	-
K240M-7.5 Strip Blade	38584	0.2953	7.5	-
K240M-7.6 Strip Blade	38585	0.2992	7.6	-
K240M-7.7 Strip Blade	38586	0.3032	7.7	-
K240M-7.8 Strip Blade	38587	0.3071	7.8	-
K240M-7.9 Strip Blade	38588	0.3110	7.9	-
K240M-8.0 Strip Blade	38589	0.3150	8.0	-
K240M-8.1 Strip Blade	38590	0.3189	8.1	-
K240M-8.2 Strip Blade	35891	0.3228	8.2	-
K240M-8.3 Strip Blade	35892	0.3268	8.3	-
K240M-8.4 Strip Blade	35893	0.3307	8.4	-
K240M-8.5 Strip Blade	35894	0.3346	8.5	-
K240M-8.6 Strip Blade	35895	0.3386	8.6	-
K240M-8.7 Strip Blade	35896	0.3425	8.7	-
K240M-8.8 Strip Blade	28116	0.3465	8.8	-
K240M-8.9 Strip Blade	35897	0.3504	8.9	-
K240M-9.0 Strip Blade	38598	0.3543	9.0	-
K240M-9.1 Strip Blade	36652	0.3583	9.1	-
K240M-9.2 Strip Blade	38599	0.3622	9.2	-
K240M-9.3 Strip Blade	38600	0.3661	9.3	-
K240M-9.4 Strip Blade	36996	0.3701	9.4	-
K240M-9.5 Strip Blade	38601	0.3740	9.5	-
K240M-9.6 Strip Blade	38602	0.3780	9.6	-
K240M-9.7 Strip Blade	38603	0.3819	9.7	-
K240M-9.8 Strip Blade	38604	0.3858	9.8	-
K240M-9.9 Strip Blade	38605	0.3898	9.9	-
K240M-10.0 Strip Blade	38606	0.3937	10.0	-
K240M-10.1 Strip Blade	38607	0.3976	10.1	-
K240M-10.2 Strip Blade	38608	0.4016	10.2	-
K240M-10.3 Strip Blade	38609	0.4055	10.3	-
K240M-10.4 Strip Blade	38610	0.4094	10.4	-
K240M-10.5 Strip Blade	38611	0.4134	10.5	-
K240M-10.6 Strip Blade	38612	0.4173	10.6	-
K240M-10.7 Strip Blade	38613	0.4213	10.7	-
K240M-10.8 Strip Blade	28117	0.4252	10.8	-
K240M-10.9 Strip Blade	38614	0.4291	10.9	-
K240M-11.0 Strip Blade	39935	0.4331	11.0	-
K240M-11.1 Strip Blade	26198	0.4370	11.1	-
K240M-11.2 Strip Blade	38615	0.4409	11.2	-
K240M-11.3 Strip Blade	37006	0.4449	11.3	-
K240M-11.4 Strip Blade	38616	0.4488	11.4	-
K240M-11.5 Strip Blade	28118	0.4528	11.5	-
K240M-11.6 Strip Blade	38617	0.4567	11.6	-

Continued on Next Page

Kappa 240 Series Blades

Used in the following Komax machines:

Kappa 240



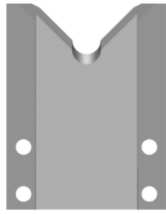
Kappa 240 M-Series® Blades (continued)

Mechtrix Description	Mechtrix	Blade Form Diameter		OEM
	Part Number	(in)	(mm)	Part Number
K240M-11.7 Strip Blade	38618	0.4606	11.7	-
K240M-11.8 Strip Blade	27273	0.4646	11.8	-
K240M-11.9 Strip Blade	33960	0.4685	11.9	-
K240M-12.0 Strip Blade	27953	0.4724	12.0	-
K240M-12.1 Strip Blade	37596	0.4764	12.1	-
K240M-12.2 Strip Blade	38619	0.4803	12.2	-
K240M-12.3 Strip Blade	38620	0.4843	12.3	-
K240M-12.4 Strip Blade	37012	0.4882	12.4	-
K240M-12.5 Strip Blade	26197	0.4921	12.5	-
K240M-12.6 Strip Blade	38621	0.4961	12.6	-
K240M-12.7 Strip Blade	38622	0.5000	12.7	-
K240M-12.8 Strip Blade	38623	0.5039	12.8	-
K240M-12.9 Strip Blade	38624	0.5079	12.9	-
K240M-13.0 Strip Blade	38625	0.5118	13.0	-
K240M-13.1 Strip Blade	38626	0.5157	13.1	-
K240M-13.2 Strip Blade	27383	0.5197	13.2	-
K240M-13.3 Strip Blade	38627	0.5236	13.3	-
K240M-13.4 Strip Blade	38628	0.5276	13.4	-
K240M-13.5 Strip Blade	38629	0.5315	13.5	-
K240M-13.6 Strip Blade	38630	0.5354	13.6	-
K240M-13.7 Strip Blade	27954	0.5394	13.7	-
K240M-13.8 Strip Blade	37013	0.5433	13.8	-
K240M-13.9 Strip Blade	38631	0.5472	13.9	-
K240M-14.0 Strip Blade	38632	0.5512	14.0	-
K240M-14.1 Strip Blade	37997	0.5551	14.1	-
K240M-14.2 Strip Blade	38633	0.5591	14.2	-
K240M-14.3 Strip Blade	38634	0.5630	14.3	-
K240M-14.4 Strip Blade	38635	0.5669	14.4	-
K240M-14.5 Strip Blade	28227	0.5709	14.5	-
K240M-14.6 Strip Blade	38636	0.5748	14.6	-
K240M-14.7 Strip Blade	38637	0.5787	14.7	-
K240M-14.8 Strip Blade	38638	0.5827	14.8	-
K240M-14.9 Strip Blade	38639	0.5866	14.9	-
K240M-15.0 Strip Blade	38640	0.5906	15.0	-

Kappa 240 Series Blades

Used in the following Komax machines:

Kappa 240



Kappa 240 Full Radius Blades

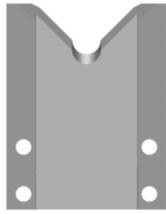
Mechtrix Description	Mechtrix Part Number	Blade Form (in)	Diameter (mm)	OEM Part Number
K240-0.3D Strip Blade	38641	0.0118	0.3	-
K240-0.4D Strip Blade	38642	0.0158	0.4	-
K240-0.5D Strip Blade	38643	0.0197	0.5	-
K240-0.6D Strip Blade	38644	0.0236	0.6	-
K240-0.7D Strip Blade	38645	0.0276	0.7	-
K240-0.8D Strip Blade	38646	0.0315	0.8	-
K240-0.9D Strip Blade	38647	0.0354	0.9	-
K240-1.0D Strip Blade	38648	0.0394	1.0	-
K240-1.1D Strip Blade	38649	0.0433	1.1	-
K240-1.2D Strip Blade	38650	0.0472	1.2	-
K240-1.3D Strip Blade	38651	0.0512	1.3	-
K240-1.4D Strip Blade	38652	0.0551	1.4	-
K240-1.5D Strip Blade	38653	0.0591	1.5	-
K240-1.6D Strip Blade	38654	0.0630	1.6	-
K240-1.7D Strip Blade	38655	0.0669	1.7	-
K240-1.8D Strip Blade	38656	0.0709	1.8	-
K240-1.9D Strip Blade	38657	0.0748	1.9	-
K240-2.0D Strip Blade	38658	0.0787	2.0	-
K240-2.1D Strip Blade	38659	0.0827	2.1	-
K240-2.2D Strip Blade	38660	0.0866	2.2	-
K240-2.3D Strip Blade	38661	0.0906	2.3	-
K240-2.4D Strip Blade	38662	0.0945	2.4	-
K240-2.5D Strip Blade	38663	0.0984	2.5	-
K240-2.6D Strip Blade	38664	0.1024	2.6	-
K240-2.7D Strip Blade	38665	0.1063	2.7	-
K240-2.8D Strip Blade	38666	0.1102	2.8	-
K240-2.9D Strip Blade	38667	0.1142	2.9	-
K240-3.0D Strip Blade	38668	0.1181	3.0	-
K240-3.1D Strip Blade	38669	0.1221	3.1	-
K240-3.2D Strip Blade	38670	0.1260	3.2	-
K240-3.3D Strip Blade	38671	0.1299	3.3	-
K240-3.4D Strip Blade	38672	0.1339	3.4	-
K240-3.5D Strip Blade	38673	0.1378	3.5	-
K240-3.6D Strip Blade	38674	0.1417	3.6	-
K240-3.7D Strip Blade	38675	0.1457	3.7	-
K240-3.8D Strip Blade	38676	0.1496	3.8	-
K240-3.9D Strip Blade	38677	0.1535	3.9	-
K240-4.0D Strip Blade	38678	0.1575	4.0	-
K240-4.1D Strip Blade	38679	0.1614	4.1	-
K240-4.2D Strip Blade	38680	0.1654	4.2	-
K240-4.3D Strip Blade	38681	0.1693	4.3	-
K240-4.4D Strip Blade	38682	0.1732	4.4	-
K240-4.5D Strip Blade	38683	0.1772	4.5	-
K240-4.6D Strip Blade	38684	0.1811	4.6	-
K240-4.7D Strip Blade	38685	0.1850	4.7	-
K240-4.8D Strip Blade	38686	0.1890	4.8	-
K240-4.9D Strip Blade	38687	0.1929	4.9	-

Continued on Next Page

Kappa 240 Series Blades

Used in the following Komax machines:

Kappa 240



Kappa 240 Full Radius Blades (continued)

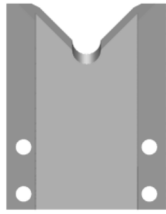
Mechtrix Description	Mechtrix Part Number	Blade Form (in)	Diameter (mm)	OEM Part Number
K240-5.0D Strip Blade	38688	0.1969	5.0	-
K240-5.1D Strip Blade	38689	0.2008	5.1	-
K240-5.2D Strip Blade	38690	0.2047	5.2	-
K240-5.3D Strip Blade	35236	0.2087	5.3	-
K240-5.4D Strip Blade	38691	0.2126	5.4	-
K240-5.5D Strip Blade	38692	0.2165	5.5	-
K240-5.6D Strip Blade	38693	0.2205	5.6	-
K240-5.7D Strip Blade	38694	0.2244	5.7	-
K240-5.8D Strip Blade	38695	0.2284	5.8	-
K240-5.9D Strip Blade	38696	0.2323	5.9	-
K240-6.0D Strip Blade	38697	0.2362	6.0	-
K240-6.1D Strip Blade	38698	0.2402	6.1	-
K240-6.2D Strip Blade	38699	0.2441	6.2	-
K240-6.3D Strip Blade	38700	0.2480	6.3	-
K240-6.4D Strip Blade	38701	0.2520	6.4	-
K240-6.5D Strip Blade	35237	0.2559	6.5	-
K240-6.6D Strip Blade	38702	0.2598	6.6	-
K240-6.7D Strip Blade	38703	0.2638	6.7	-
K240-6.8D Strip Blade	38704	0.2677	6.8	-
K240-6.9D Strip Blade	38705	0.2717	6.9	-
K240-7.0D Strip Blade	38706	0.2756	7.0	-
K240-7.1D Strip Blade	38707	0.2795	7.1	-
K240-7.2D Strip Blade	38708	0.2835	7.2	-
K240-7.3D Strip Blade	38709	0.2874	7.3	-
K240-7.4D Strip Blade	38710	0.2913	7.4	-
K240-7.5D Strip Blade	38711	0.2953	7.5	-
K240-7.6D Strip Blade	38712	0.2992	7.6	-
K240-7.7D Strip Blade	38713	0.3032	7.7	-
K240-7.8D Strip Blade	38714	0.3071	7.8	-
K240-7.9D Strip Blade	38715	0.3110	7.9	-
K240-8.0D Strip Blade	30379	0.3150	8.0	-
K240-8.1D Strip Blade	38716	0.3189	8.1	-
K240-8.2D Strip Blade	38717	0.3228	8.2	-
K240-8.3D Strip Blade	38718	0.3268	8.3	-
K240-8.4D Strip Blade	38719	0.3307	8.4	-
K240-8.5D Strip Blade	38720	0.3346	8.5	-
K240-8.6D Strip Blade	38721	0.3386	8.6	-
K240-8.7D Strip Blade	38722	0.3425	8.7	-
K240-8.8D Strip Blade	38723	0.3465	8.8	-
K240-8.9D Strip Blade	38724	0.3504	8.9	-
K240-9.0D Strip Blade	38725	0.3543	9.0	-
K240-9.1D Strip Blade	38726	0.3583	9.1	-
K240-9.2D Strip Blade	38727	0.3622	9.2	-
K240-9.3D Strip Blade	38728	0.3661	9.3	-
K240-9.4D Strip Blade	38729	0.3701	9.4	-
K240-9.5D Strip Blade	38730	0.3740	9.5	-

Continued on Next Page

Kappa 240 Series Blades

Used in the following Komax machines:

Kappa 240



Kappa 240 Full Radius Blades (continued)

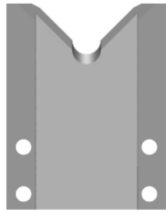
Mechtrix Description	Mechtrix Part Number	Blade Form (in)	Diameter (mm)	OEM Part Number
K240-9.6D Strip Blade	38731	0.3780	9.6	-
K240-9.7D Strip Blade	38732	0.3819	9.7	-
K240-9.8D Strip Blade	38733	0.3858	9.8	-
K240-9.9D Strip Blade	38734	0.3898	9.9	-
K240-10.0D Strip Blade	38735	0.3937	10.0	-
K240-10.1D Strip Blade	38736	0.3976	10.1	-
K240-10.2D Strip Blade	38737	0.4016	10.2	-
K240-10.3D Strip Blade	38738	0.4055	10.3	-
K240-10.4D Strip Blade	38739	0.4094	10.4	-
K240-10.5D Strip Blade	38740	0.4134	10.5	-
K240-10.6D Strip Blade	38741	0.4173	10.6	-
K240-10.7D Strip Blade	38742	0.4213	10.7	-
K240-10.8D Strip Blade	38743	0.4252	10.8	-
K240-10.9D Strip Blade	38744	0.4291	10.9	-
K240-11.0D Strip Blade	36124	0.4331	11.0	-
K240-11.1D Strip Blade	38745	0.4370	11.1	-
K240-11.2D Strip Blade	38746	0.4409	11.2	-
K240-11.3D Strip Blade	38747	0.4449	11.3	-
K240-11.4D Strip Blade	38748	0.4488	11.4	-
K240-11.5D Strip Blade	38749	0.4528	11.5	-
K240-11.6D Strip Blade	38750	0.4567	11.6	-
K240-11.7D Strip Blade	38751	0.4606	11.7	-
K240-11.8D Strip Blade	38752	0.4646	11.8	-
K240-11.9D Strip Blade	38753	0.4685	11.9	-
K240-12.0D Strip Blade	35434	0.4724	12.0	-
K240-12.1D Strip Blade	38754	0.4764	12.1	-
K240-12.2D Strip Blade	38755	0.4803	12.2	-
K240-12.3D Strip Blade	38756	0.4843	12.3	-
K240-12.4D Strip Blade	38757	0.4882	12.4	-
K240-12.5D Strip Blade	38758	0.4921	12.5	-
K240-12.6D Strip Blade	38759	0.4961	12.6	-
K240-12.7D Strip Blade	38760	0.5000	12.7	-
K240-12.8D Strip Blade	38761	0.5039	12.8	-
K240-12.9D Strip Blade	38762	0.5079	12.9	-
K240-13.0D Strip Blade	38763	0.5118	13.0	-
K240-13.1D Strip Blade	38764	0.5157	13.1	-
K240-13.2D Strip Blade	38765	0.5197	13.2	-
K240-13.3D Strip Blade	38766	0.5236	13.3	-
K240-13.4D Strip Blade	38767	0.5276	13.4	-
K240-13.5D Strip Blade	38768	0.5315	13.5	-
K240-13.6D Strip Blade	38769	0.5354	13.6	-
K240-13.7D Strip Blade	38770	0.5394	13.7	-
K240-13.8D Strip Blade	38771	0.5433	13.8	-
K240-13.9D Strip Blade	38772	0.5472	13.9	-
K240-14.0D Strip Blade	38773	0.5512	14.0	-

Continued on Next Page

Kappa 240 Series Blades

Used in the following Komax machines:

Kappa 240



Kappa 240 Full Radius Blades (continued)

Mechtrix Description	Mechtrix Part Number	Blade Form Diameter (in)	Diameter (mm)	OEM Part Number
K240-14.1D Strip Blade	38774	0.5551	14.1	-
K240-14.2D Strip Blade	38775	0.5591	14.2	-
K240-14.3D Strip Blade	38776	0.5630	14.3	-
K240-14.4D Strip Blade	38777	0.5669	14.4	-
K240-14.5D Strip Blade	38778	0.5709	14.5	-
K240-14.6D Strip Blade	38779	0.5748	14.6	-
K240-14.7D Strip Blade	38780	0.5787	14.7	-
K240-14.8D Strip Blade	38781	0.5827	14.8	-
K240-14.9D Strip Blade	38782	0.5866	14.9	-
K240-15.0D Strip Blade	38783	0.5906	15.0	-



Kappa 240 Slitting Blades

Mechtrix Description	Mechtrix Part Number	Blade Form Diameter (in)	Diameter (mm)	OEM Part Number
K240 Slitting Blade (D2)	28199	-	-	0052186