

KMI Series Blades

Used in the following **KMI Wire Processing** machines:

Contact ST | Contact ST5 | Contact DWF 5 | Contact TR | Extreme | Junior

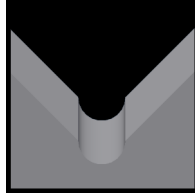
Available KMI Blade Form Geometries Include:



Universal



M-Series®



Full-Radius



KMI Universal Blades

| Mechtrix Description | Mechtrix Part Number | Blade Form Diameter (in) | Diameter (mm) | OEM Part Number |
|--|----------------------|--------------------------|---------------|-----------------|
| KMI Universal Strip/Cut Blades (Carbide) | 17893-01 | - | - | T2AB0017V |
| KMI Universal Strip/Cut Blades (M2) | 17893-03 | - | - | T2AB0017 |
| KMI Universal Strip/Cut Blades w/TiN Coating (M2) | 17893-03-CT1 | - | - | T2AB0017R |
| KMI Universal Cut-off Blades w/TiN Coating (Carbide) | 26929-01-CT1 | - | - | AB000365 |
| KMI Universal Cut-off Blades w/TiN Coating (A2) | 26929-04-CT1 | - | - | - |



KMI M-Series Blades

M-Series Blades are available in 0.1mm increments in the following sizes:

KMIM-0.3 thru **KMIM-4.0**



KMI Full Radius Blades

Full Radius Blades are available in 0.1mm increments in the following sizes:

KMI-0.4D thru **KMI-4.0D**