

# KM-104N Series Blades

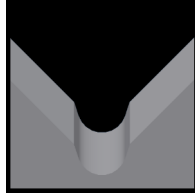
Used in the following *KM Digitech* machines:

KM-104N

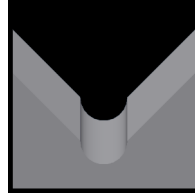
## Available KM-104N Blade Form Geometries Include:



Universal



M-Series®



Full-Radius



## KM Digitech KM-104N Universal Stripping and Cut-off Blades

| Mechtrix Description                      | Mechtrix Part Number | Blade Form | Diameter (in) | Diameter (mm) | OEM Part Number |
|---|----------------------|------------|---------------|---------------|-----------------|
| KM-104N Universal Strip Blade-Upper Left  | 29638-CT1            | -          | -             | -             | -               |
| KM-104N Universal Strip Blade-Lower Left  | 29636-CT1            | -          | -             | -             | -               |
| KM-104N Universal Strip Blade-Upper Right | 29639-CT1            | -          | -             | -             | -               |
| KM-104N Universal Strip Blade-Lower Right | 29637-CT1            | -          | -             | -             | -               |
| KM-104N Lower Cut-off Blade               | 29640-CT1            | -          | -             | -             | -               |
| KM-104N Upper Cut-off Blade               | 29641-CT1            | -          | -             | -             | -               |
| KM-104N (DT) Cut-off Blade                | 29642-CT1            | -          | -             | -             | -               |

## KM Digitech KM-104N M-Series Blades

M-Series Blades are available in 0.1mm increments in the following sizes:

[KM104NM-0.3](#) thru [KM104NM-4.0](#)

## KM Digitech KM-104N Full Radius Blades

Full Radius Blades are available in 0.1mm increments in the following sizes:

[KM104N-0.4D](#) thru [KM104N-4.0D](#)