

# Eubanks Standard Series Blades



Used in the following **Eubanks** machines:

Model 1000 | Model 2600 | Model 2670 | Model 2700 | Model 2750 | Model 2800 | Model 2900 | Model 4000

## Available Eubanks 1000 Blade Form Geometries Include:



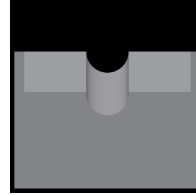
Universal



Cut-Off



V-Style



Die-Type

## EVU Stripping Blades



Mechtrix Description	Mechtrix Part Number	Blade Form Diameter		OEM Part Number
		(in)	(mm)	
EVU-.930 Stripping Blade	08223	-	-	00154

## EVC Cut-off Blades

Mechtrix Description	Mechtrix Part Number	Blade Form Diameter		OEM Part Number
		(in)	(mm)	
EVC-.990 Cut-off Blade	08225	-	-	00157
EVC-.960 Cut-off Blade	08922	-	-	00158
EVC-.945 Cut-off Blade	08923	-	-	00159

\* A set of **Eubanks Standard** blades consists of four (4) **EVU** Strip Blades & two (2) **EVC** Cut-Off Blades

## EV Stripping Blades



Mechtrix Description	Mechtrix Part Number	Blade Form Diameter		OEM Part Number
		(in)	(mm)	
EV-0.30 Stripping Blade	12418	0.01181	0.30	-
EV-0.55 Stripping Blade	12419	0.02165	0.55	-
EV-0.78 Stripping Blade	12420	0.03071	0.78	-
EV-1.13 Stripping Blade	08292	0.04449	1.13	-
EV-1.65 Stripping Blade	08293	0.06496	1.65	-
EV-2.09 Stripping Blade	08294	0.08228	2.09	-
EV-2.53 Stripping Blade	09969	0.09961	2.53	-
EV-3.01 Stripping Blade	08965	0.11850	3.01	-
EV-3.49 Stripping Blade	12421	0.13740	3.49	-
EV-4.37 Stripping Blade	12422	0.17205	4.37	-

## EVC Cut-off Blades

Mechtrix Description	Mechtrix Part Number	Blade Form Diameter		OEM Part Number
		(in)	(mm)	
EVC-.990	08225	-	-	00157

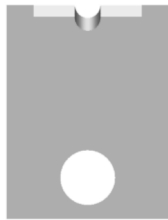
\* A set of **Eubanks Standard** blades consists of four (4) **EV** Strip Blades & two (2) **EVC** Cut-Off Blades

# Eubanks Standard Series Blades



Used in the following **Eubanks** machines:

Model 1000 | Model 2600 | Model 2670 | Model 2700 | Model 2750 | Model 2800 | Model 2900 | Model 4000



## ED Stripping Blades

Mechtrix Description	Mechtrix Part Number	Blade Form (in)	Diameter (mm)	OEM Part Number
ED-0.4 Stripping Blade	08742	0.01575	0.40	-
ED-0.5 Stripping Blade	13560	0.01969	0.50	-
ED-0.6 Stripping Blade	08221	0.02362	0.60	-
ED-0.7 Stripping Blade	08497	0.02756	0.70	-
ED-0.8 Stripping Blade	08498	0.03150	0.80	-
ED-0.9 Stripping Blade	09211	0.03543	0.90	-
ED-1.0 Stripping Blade	08453	0.03937	1.00	-
ED-1.1 Stripping Blade	09967	0.04331	1.10	-
ED-1.2 Stripping Blade	09349	0.04724	1.20	-
ED-1.3 Stripping Blade	08588	0.05118	1.30	-
ED-1.4 Stripping Blade	10857	0.05512	1.40	-
ED-1.5 Stripping Blade	09402	0.05906	1.50	-
ED-1.6 Stripping Blade	08454	0.06299	1.60	-
ED-1.7 Stripping Blade	08522	0.06693	1.70	-
ED-1.8 Stripping Blade	07844	0.07087	1.80	-
ED-1.9 Stripping Blade	08523	0.07480	1.90	-
ED-2.0 Stripping Blade	08524	0.07874	2.00	-
ED-2.1 Stripping Blade	09935	0.08268	2.10	-
ED-2.2 Stripping Blade	11412	0.08661	2.20	-
ED-2.3 Stripping Blade	07893	0.09055	2.30	-
ED-2.4 Stripping Blade	08525	0.09449	2.40	-
ED-2.5 Stripping Blade	08526	0.09843	2.50	-
ED-2.6 Stripping Blade	09743	0.10236	2.60	-
ED-2.7 Stripping Blade	09744	0.10630	2.70	-
ED-2.8 Stripping Blade	09217	0.11024	2.80	-
ED-2.9 Stripping Blade	09785	0.11417	2.90	-
ED-3.0 Stripping Blade	09183	0.11811	3.00	-
ED-3.1 Stripping Blade	12343	0.12205	3.10	-
ED-7.8 Stripping Blade	09426	0.30709	7.80	-
ED-7.9 Stripping Blade	10957	0.31102	7.90	-
ED-8.0 Stripping Blade	10671	0.31496	8.00	-
ED-8.1 Stripping Blade	08379	0.31890	8.10	-
ED-8.2 Stripping Blade	17694	0.32283	8.20	-
ED-8.3 Stripping Blade	23031	0.32677	8.30	-
ED-8.4 Stripping Blade	10863	0.33071	8.40	-
ED-8.5 Stripping Blade	13525	0.33465	8.50	-
ED-8.6 Stripping Blade	12341	0.33858	8.60	-
ED-8.7 Stripping Blade	08655	0.34252	8.70	-
ED-8.8 Stripping Blade	13418	0.34646	8.80	-
ED-8.9 Stripping Blade	08977	0.35039	8.90	-
ED-9.0 Stripping Blade	22089	0.35433	9.00	-
ED-9.1 Stripping Blade	08966	0.35827	9.10	-
ED-9.2 Stripping Blade	17992	0.36220	9.20	-
ED-9.3 Stripping Blade	23032	0.36614	9.30	-
ED-9.4 Stripping Blade	16570	0.37008	9.40	-
ED-9.5 Stripping Blade	23033	0.37402	9.50	-
ED-9.6 Stripping Blade	09143	0.37795	9.60	-

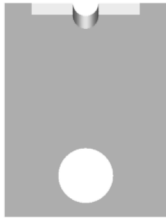
Continued on Next Page

# Eubanks Standard Series Blades



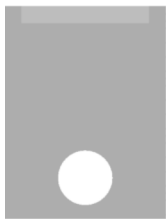
Used in the following **Eubanks** machines:

Model 1000 | Model 2600 | Model 2670 | Model 2700 | Model 2750 | Model 2800 | Model 2900 | Model 4000



## ED Stripping Blades (continued)

Mechtrix Description	Mechtrix Part Number	Blade Form Diameter		OEM Part Number
		(in)	(mm)	
ED-9.7 Stripping Blade	17496	0.38189	9.70	-
ED-9.8 Stripping Blade	16571	0.38583	9.80	-
ED-9.9 Stripping Blade	23034	0.38976	9.90	-
ED-10.0 Stripping Blade	23035	0.39370	10.00	-
ED-10.1 Stripping Blade	23036	0.39764	10.10	-
ED-10.2 Stripping Blade	09141	0.40157	10.20	-
ED-10.3 Stripping Blade	23037	0.40551	10.30	-
ED-10.4 Stripping Blade	19861	0.40945	10.40	-
ED-10.5 Stripping Blade	19862	0.41339	10.50	-
ED-10.6 Stripping Blade	09142	0.41732	10.60	-
ED-10.7 Stripping Blade	23038	0.42126	10.70	-
ED-10.8 Stripping Blade	23039	0.42520	10.80	-



## EDC Cut-off Blades

Mechtrix Description	Mechtrix Part Number	Blade Form Diameter		OEM Part Number
		(in)	(mm)	
EDC	04379	-	-	00169



## EDG Wire Guides

Mechtrix Description	Mechtrix Part Number	Guide Form Diameter		OEM Part Number
		(in)	(mm)	
EDG-0.5 Wire Guide	20671	0.01969	0.50	-
EDG-0.6 Wire Guide	08461	0.02362	0.60	-
EDG-0.7 Wire Guide	08222	0.02756	0.70	-
EDG-0.8 Wire Guide	16097	0.03150	0.80	-
EDG-0.9 Wire Guide	09693	0.03543	0.90	-
EDG-1.0 Wire Guide	08462	0.03937	1.00	-
EDG-1.1 Wire Guide	11202	0.04331	1.10	-
EDG-1.2 Wire Guide	11170	0.04724	1.20	-
EDG-1.3 Wire Guide	14240	0.05118	1.30	-
EDG-1.4 Wire Guide	09473	0.05512	1.40	-
EDG-1.5 Wire Guide	08913	0.05906	1.50	-
EDG-1.6 Wire Guide	08465	0.06299	1.60	-
EDG-1.7 Wire Guide	07898	0.06693	1.70	-
EDG-1.8 Wire Guide	08527	0.07087	1.80	-
EDG-1.9 Wire Guide	08528	0.07480	1.90	-
EDG-2.0 Wire Guide	07845	0.07874	2.00	-
EDG-2.1 Wire Guide	08529	0.08268	2.10	-
EDG-2.2 Wire Guide	08530	0.08661	2.20	-
EDG-2.3 Wire Guide	08531	0.09055	2.30	-

Continued on Next Page

# Eubanks Standard Series Blades



Used in the following **Eubanks** machines:

Model 1000 | Model 2600 | Model 2670 | Model 2700 | Model 2750 | Model 2800 | Model 2900 | Model 4000



## EDG Wire Guides (continued)

Mechtrix Description	Mechtrix Part Number	Guide Form (in)	Diameter (mm)	OEM Part Number
EDG-2.4 Wire Guide	08532	0.09449	2.40	-
EDG-2.5 Wire Guide	14421	0.09843	2.50	-
EDG-2.6 Wire Guide	12364	0.10236	2.60	-
EDG-2.7 Wire Guide	08533	0.10630	2.70	-
EDG-2.8 Wire Guide	08534	0.11024	2.80	-
EDG-2.9 Wire Guide	08535	0.11417	2.90	-
EDG-3.0 Wire Guide	08536	0.11811	3.00	-
EDG-3.1 Wire Guide	08537	0.12205	3.10	-
EDG-3.2 Wire Guide	08538	0.12598	3.20	-
EDG-3.3 Wire Guide	13660	0.12992	3.30	-
EDG-3.4 Wire Guide	09745	0.13386	3.40	-
EDG-3.5 Wire Guide	09746	0.13780	3.50	-
EDG-3.6 Wire Guide	07894	0.14173	3.60	-
EDG-3.7 Wire Guide	09747	0.14567	3.70	-
EDG-3.8 Wire Guide	20087	0.14961	3.80	-
EDG-3.9 Wire Guide	12319	0.15354	3.90	-
EDG-4.0 Wire Guide	15813	0.15748	4.00	-
EDG-4.1 Wire Guide	08419	0.16142	4.10	-
EDG-4.2 Wire Guide	10323	0.16535	4.20	-
EDG-4.3 Wire Guide	12798	0.16929	4.30	-
EDG-4.4 Wire Guide	09783	0.17323	4.40	-
EDG-4.5 Wire Guide	11248	0.17717	4.50	-
EDG-4.6 Wire Guide	08424	0.18110	4.60	-
EDG-4.7 Wire Guide	14661	0.18504	4.70	-
EDG-4.8 Wire Guide	14000	0.18898	4.80	-
EDG-4.9 Wire Guide	11410	0.19291	4.90	-
EDG-5.0 Wire Guide	09153	0.19685	5.00	-
EDG-5.1 Wire Guide	16922	0.20079	5.10	-
EDG-5.2 Wire Guide	12315	0.20472	5.20	-
EDG-5.3 Wire Guide	12345	0.20866	5.30	-
EDG-5.4 Wire Guide	08657	0.21260	5.40	-
EDG-5.5 Wire Guide	14238	0.21654	5.50	-
EDG-5.6 Wire Guide	08656	0.22047	5.60	-
EDG-5.7 Wire Guide	14443	0.22441	5.70	-
EDG-5.8 Wire Guide	13865	0.22835	5.80	-
EDG-5.9 Wire Guide	13230	0.23228	5.90	-
EDG-6.0 Wire Guide	09722	0.23622	6.00	-
EDG-6.1 Wire Guide	16656	0.24016	6.10	-
EDG-6.2 Wire Guide	12321	0.24409	6.20	-
EDG-6.3 Wire Guide	08036	0.24803	6.30	-
EDG-6.4 Wire Guide	08345	0.25197	6.40	-
EDG-6.5 Wire Guide	13667	0.25591	6.50	-
EDG-6.6 Wire Guide	09500	0.25984	6.60	-
EDG-6.7 Wire Guide	12057	0.26378	6.70	-
EDG-6.8 Wire Guide	08235	0.26772	6.80	-
EDG-6.9 Wire Guide	08587	0.27165	6.90	-
EDG-7.0 Wire Guide	08549	0.27559	7.00	-

Continued on Next Page

# Eubanks Standard Series Blades



Used in the following **Eubanks** machines:

Model 1000 | Model 2600 | Model 2670 | Model 2700 | Model 2750 | Model 2800 | Model 2900 | Model 4000



## EDG Wire Guides (continued)

Mechtrix Description	Mechtrix Part Number	Guide Form (in)	Diameter (mm)	OEM Part Number
EDG-7.1 Wire Guide	14531	0.27953	7.10	-
EDG-7.2 Wire Guide	09149	0.28346	7.20	-
EDG-7.3 Wire Guide	08358	0.28740	7.30	-
EDG-7.4 Wire Guide	08420	0.29134	7.40	-
EDG-7.5 Wire Guide	19383	0.29528	7.50	-
EDG-7.6 Wire Guide	10546	0.29921	7.60	-
EDG-7.7 Wire Guide	09782	0.30315	7.70	-
EDG-7.8 Wire Guide	14078	0.30709	7.80	-
EDG-7.9 Wire Guide	08553	0.31102	7.90	-
EDG-8.0 Wire Guide	09375	0.31496	8.00	-
EDG-8.1 Wire Guide	12817	0.31890	8.10	-
EDG-8.2 Wire Guide	09146	0.32283	8.20	-
EDG-8.3 Wire Guide	13491	0.32677	8.30	-
EDG-8.4 Wire Guide	09501	0.33071	8.40	-
EDG-8.5 Wire Guide	08634	0.33465	8.50	-
EDG-8.6 Wire Guide	11189	0.33858	8.60	-
EDG-8.7 Wire Guide	13545	0.34252	8.70	-
EDG-8.8 Wire Guide	20320	0.34646	8.80	-
EDG-8.9 Wire Guide	09630	0.35039	8.90	-
EDG-9.0 Wire Guide	08287	0.35433	9.00	-
EDG-9.1 Wire Guide	08378	0.35827	9.10	-
EDG-9.2 Wire Guide	08550	0.36220	9.20	-
EDG-9.3 Wire Guide	12001	0.36614	9.30	-
EDG-9.4 Wire Guide	15962	0.37008	9.40	-
EDG-9.5 Wire Guide	23641	0.37402	9.50	-
EDG-9.6 Wire Guide	08322	0.37795	9.60	-
EDG-9.7 Wire Guide	09428	0.38189	9.70	-
EDG-9.8 Wire Guide	16508	0.38583	9.80	-
EDG-9.9 Wire Guide	08785	0.38976	9.90	-
EDG-10.0 Wire Guide	08359	0.39370	10.00	-
EDG-10.1 Wire Guide	12306	0.39764	10.10	-
EDG-10.2 Wire Guide	08518	0.40157	10.20	-
EDG-10.3 Wire Guide	17695	0.40551	10.30	-
EDG-10.4 Wire Guide	17693	0.40945	10.40	-
EDG-10.5 Wire Guide	12344	0.41339	10.50	-
EDG-10.6 Wire Guide	07782	0.41732	10.60	-
EDG-10.7 Wire Guide	08658	0.42126	10.70	-
EDG-10.8 Wire Guide	15402	0.42520	10.80	-
EDG-10.9 Wire Guide	11047	0.42913	10.90	-

\* A set of **Eubanks** tooling consists of four (4) **ED Strip Blades**, two (2) **EDC Cut-Off Blades**, & four (4) **EDG Wire Guides**

\***Model 3751 & Model 4850** machines require special wire guides and cannot use the standard EDG wire guides listed above