

Eubanks 8000 Series Blades

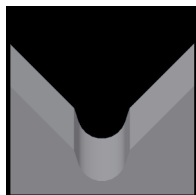
Used in the following **Eubanks** machines:

Model 8000

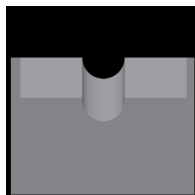
Available Eubanks 8000 Blade Form Geometries Include:



Universal



M-Series®



Die-Type



Eubanks Model 8000 Universal Blades

| Mechtrix Description | Mechtrix Part Number | Blade Form Diameter (in) | Diameter (mm) | OEM Part Number |
|--|----------------------|--------------------------|---------------|-----------------|
| Eubanks E80UV Universal Stripping (12-30 gage) | 17100 | - | - | 14252-01 |
| Eubanks E80UV Universal Stripping (4-12 gage) | 16109 | - | - | 14248-01 |
| Eubanks E80C Universal Cut-off (12-30 gage) | 17221 | - | - | 14251-01 |
| Eubanks E80C Universal Cut-off (4-12 gage) | 16110 | - | - | 14247-01 |



Eubanks Model 8000 M-Series® Blades

| Mechtrix Description | Mechtrix Part Number | Blade Form Diameter (in) | Diameter (mm) | OEM Part Number |
|----------------------|----------------------|--------------------------|---------------|-----------------|
| E80M-0.3 Strip Blade | 30638 | 0.0118 | 0.3 | - |
| E80M-0.4 Strip Blade | 30639 | 0.0158 | 0.4 | - |
| E80M-0.5 Strip Blade | 32202 | 0.0197 | 0.5 | - |
| E80M-0.6 Strip Blade | 28767 | 0.0236 | 0.6 | - |
| E80M-0.7 Strip Blade | 28592 | 0.0276 | 0.7 | - |
| E80M-0.8 Strip Blade | 44615 | 0.0315 | 0.8 | - |
| E80M-0.9 Strip Blade | 21477 | 0.0354 | 0.9 | - |
| E80M-1.0 Strip Blade | 21476 | 0.0394 | 1.0 | - |
| E80M-1.1 Strip Blade | 28593 | 0.0433 | 1.1 | - |
| E80M-1.2 Strip Blade | 31596 | 0.0472 | 1.2 | - |
| E80M-1.3 Strip Blade | 17461 | 0.0512 | 1.3 | - |
| E80M-1.4 Strip Blade | 24253 | 0.0551 | 1.4 | - |
| E80M-1.5 Strip Blade | 20583 | 0.0591 | 1.5 | - |
| E80M-1.6 Strip Blade | 32454 | 0.0630 | 1.6 | - |
| E80M-1.7 Strip Blade | 17462 | 0.0669 | 1.7 | - |
| E80M-1.8 Strip Blade | 17458 | 0.0709 | 1.8 | - |
| E80M-1.9 Strip Blade | 26345 | 0.0748 | 1.9 | - |
| E80M-2.0 Strip Blade | 22453 | 0.0787 | 2.0 | - |
| E80M-2.1 Strip Blade | 23358 | 0.0827 | 2.1 | - |
| E80M-2.2 Strip Blade | 17459 | 0.0866 | 2.2 | - |
| E80M-2.3 Strip Blade | 20827 | 0.0906 | 2.3 | - |
| E80M-2.4 Strip Blade | 17463 | 0.0945 | 2.4 | - |
| E80M-2.5 Strip Blade | 31200 | 0.0984 | 2.5 | - |
| E80M-2.6 Strip Blade | 44616 | 0.1024 | 2.6 | - |
| E80M-2.7 Strip Blade | 30349 | 0.1063 | 2.7 | - |
| E80M-2.8 Strip Blade | 20826 | 0.1102 | 2.8 | - |
| E80M-2.9 Strip Blade | 17464 | 0.1142 | 2.9 | - |
| E80M-3.0 Strip Blade | 23465 | 0.1181 | 3.0 | - |

Continued on Next Page

Eubanks 8000 Series Blades

Used in the following **Eubanks** machines:

Model 8000



Eubanks Model 8000 M-Series® Blades (continued)

| Mechtrix Description | Mechtrix Part Number | Blade Form (in) | Diameter (mm) | OEM Part Number |
|----------------------|----------------------|-----------------|---------------|-----------------|
| E80M-3.1 Strip Blade | 17460 | 0.1221 | 3.1 | - |
| E80M-3.2 Strip Blade | 17465 | 0.1260 | 3.2 | - |
| E80M-3.3 Strip Blade | 22424 | 0.1299 | 3.3 | - |
| E80M-3.4 Strip Blade | 22521 | 0.1339 | 3.4 | - |
| E80M-3.5 Strip Blade | 19655 | 0.1378 | 3.5 | - |
| E80M-3.6 Strip Blade | 20825 | 0.1417 | 3.6 | - |
| E80M-3.7 Strip Blade | 17467 | 0.1457 | 3.7 | - |
| E80M-3.8 Strip Blade | 22520 | 0.1496 | 3.8 | - |
| E80M-3.9 Strip Blade | 30112 | 0.1535 | 3.9 | - |
| E80M-4.0 Strip Blade | 33013 | 0.1575 | 4.0 | - |
| E80M-4.1 Strip Blade | 23337 | 0.1614 | 4.1 | - |
| E80M-4.2 Strip Blade | 29400 | 0.1654 | 4.2 | - |
| E80M-4.3 Strip Blade | 20507 | 0.1693 | 4.3 | - |
| E80M-4.4 Strip Blade | 17466 | 0.1732 | 4.4 | - |
| E80M-4.5 Strip Blade | 17468 | 0.1772 | 4.5 | - |
| E80M-4.6 Strip Blade | 22519 | 0.1811 | 4.6 | - |
| E80M-4.7 Strip Blade | 17470 | 0.1850 | 4.7 | - |
| E80M-4.8 Strip Blade | 44617 | 0.1890 | 4.8 | - |
| E80M-4.9 Strip Blade | 32714 | 0.1929 | 4.9 | - |
| E80M-5.0 Strip Blade | 30231 | 0.1969 | 5.0 | - |
| E80M-5.1 Strip Blade | 19650 | 0.2008 | 5.1 | - |
| E80M-5.2 Strip Blade | 22518 | 0.2047 | 5.2 | - |
| E80M-5.3 Strip Blade | 23357 | 0.2087 | 5.3 | - |
| E80M-5.4 Strip Blade | 30113 | 0.2126 | 5.4 | - |
| E80M-5.5 Strip Blade | 24598 | 0.2165 | 5.5 | - |
| E80M-5.6 Strip Blade | 23086 | 0.2205 | 5.6 | - |
| E80M-5.7 Strip Blade | 21245 | 0.2244 | 5.7 | - |
| E80M-5.8 Strip Blade | 19653 | 0.2284 | 5.8 | - |
| E80M-5.9 Strip Blade | 30114 | 0.2323 | 5.9 | - |
| E80M-6.0 Strip Blade | 22450 | 0.2362 | 6.0 | - |
| E80M-6.1 Strip Blade | 36026 | 0.2402 | 6.1 | - |
| E80M-6.2 Strip Blade | 23339 | 0.2441 | 6.2 | - |
| E80M-6.3 Strip Blade | 20505 | 0.2480 | 6.3 | - |
| E80M-6.4 Strip Blade | 19954 | 0.2520 | 6.4 | - |
| E80M-6.5 Strip Blade | 44618 | 0.2559 | 6.5 | - |
| E80M-6.6 Strip Blade | 21193 | 0.2598 | 6.6 | - |
| E80M-6.7 Strip Blade | 23338 | 0.2638 | 6.7 | - |
| E80M-6.8 Strip Blade | 44619 | 0.2677 | 6.8 | - |
| E80M-6.9 Strip Blade | 25777 | 0.2717 | 6.9 | - |
| E80M-7.0 Strip Blade | 44620 | 0.2362 | 7.0 | - |
| E80M-7.1 Strip Blade | 44621 | 0.2795 | 7.1 | - |
| E80M-7.2 Strip Blade | 23624 | 0.2835 | 7.2 | - |
| E80M-7.3 Strip Blade | 19955 | 0.2874 | 7.3 | - |
| E80M-7.4 Strip Blade | 25330 | 0.2913 | 7.4 | - |
| E80M-7.5 Strip Blade | 22449 | 0.2953 | 7.5 | - |
| E80M-7.6 Strip Blade | 44622 | 0.2992 | 7.6 | - |
| E80M-7.7 Strip Blade | 44623 | 0.3032 | 7.7 | - |

Continued on Next Page

Eubanks 8000 Series Blades

Used in the following **Eubanks** machines:

Model 8000



Eubanks Model 8000 M-Series® Blades (continued)

| Mechtrix Description | Mechtrix Part Number | Blade Form (in) | Diameter (mm) | OEM Part Number |
|-----------------------|----------------------|-----------------|---------------|-----------------|
| E80M-7.8 Strip Blade | 25778 | 0.3071 | 7.8 | - |
| E80M-7.9 Strip Blade | 19956 | 0.3110 | 7.9 | - |
| E80M-8.0 Strip Blade | 36137 | 0.2362 | 8.0 | - |
| E80M-8.1 Strip Blade | 44624 | 0.2795 | 8.1 | - |
| E80M-8.2 Strip Blade | 19741 | 0.2835 | 8.2 | - |
| E80M-8.3 Strip Blade | 23364 | 0.2874 | 8.3 | - |
| E80M-8.4 Strip Blade | 20318 | 0.2913 | 8.4 | - |
| E80M-8.5 Strip Blade | 30200 | 0.2953 | 8.5 | - |
| E80M-8.6 Strip Blade | 44625 | 0.2992 | 8.6 | - |
| E80M-8.7 Strip Blade | 30261 | 0.3032 | 8.7 | - |
| E80M-8.8 Strip Blade | 23239 | 0.3071 | 8.8 | - |
| E80M-8.9 Strip Blade | 20935 | 0.3110 | 8.9 | - |
| E80M-9.0 Strip Blade | 36882 | 0.2362 | 9.0 | - |
| E80M-9.1 Strip Blade | 22448 | 0.2795 | 9.1 | - |
| E80M-9.2 Strip Blade | 44626 | 0.2835 | 9.2 | - |
| E80M-9.3 Strip Blade | 44627 | 0.2874 | 9.3 | - |
| E80M-9.4 Strip Blade | 44628 | 0.2913 | 9.4 | - |
| E80M-9.5 Strip Blade | 44629 | 0.2953 | 9.5 | - |
| E80M-9.6 Strip Blade | 44630 | 0.2992 | 9.6 | - |
| E80M-9.7 Strip Blade | 34522 | 0.3032 | 9.7 | - |
| E80M-9.8 Strip Blade | 44631 | 0.3071 | 9.8 | - |
| E80M-9.9 Strip Blade | 44632 | 0.3110 | 9.9 | - |
| E80M-10.0 Strip Blade | 44633 | 0.2362 | 10.0 | - |
| E80M-10.1 Strip Blade | 44634 | 0.2795 | 10.1 | - |
| E80M-10.2 Strip Blade | 44635 | 0.2835 | 10.2 | - |
| E80M-10.3 Strip Blade | 44636 | 0.2874 | 10.3 | - |
| E80M-10.4 Strip Blade | 19742 | 0.2913 | 10.4 | - |
| E80M-10.5 Strip Blade | 30199 | 0.2953 | 10.5 | - |
| E80M-10.6 Strip Blade | 44637 | 0.2992 | 10.6 | - |
| E80M-10.7 Strip Blade | 44638 | 0.3032 | 10.7 | - |
| E80M-10.8 Strip Blade | 44639 | 0.3071 | 10.8 | - |
| E80M-10.9 Strip Blade | 44640 | 0.3110 | 10.9 | - |
| E80M-11.0 Strip Blade | 44641 | 0.2362 | 11.0 | - |
| E80M-11.1 Strip Blade | 44642 | 0.2795 | 11.1 | - |
| E80M-11.2 Strip Blade | 44643 | 0.2835 | 11.2 | - |
| E80M-11.3 Strip Blade | 44644 | 0.2874 | 11.3 | - |
| E80M-11.4 Strip Blade | 44645 | 0.2913 | 11.4 | - |
| E80M-11.5 Strip Blade | 44646 | 0.2953 | 11.5 | - |
| E80M-11.6 Strip Blade | 35755 | 0.2992 | 11.6 | - |
| E80M-11.7 Strip Blade | 44647 | 0.3032 | 11.7 | - |
| E80M-11.8 Strip Blade | 44648 | 0.3071 | 11.8 | - |
| E80M-11.9 Strip Blade | 44649 | 0.3110 | 11.9 | - |
| E80M-12.0 Strip Blade | 44650 | 0.2362 | 12.0 | - |
| E80M-12.1 Strip Blade | 44651 | 0.2795 | 12.1 | - |
| E80M-12.2 Strip Blade | 44652 | 0.2835 | 12.2 | - |
| E80M-12.3 Strip Blade | 44653 | 0.2874 | 12.3 | - |
| E80M-12.4 Strip Blade | 44654 | 0.2913 | 12.4 | - |

Continued on Next Page

Eubanks 8000 Series Blades

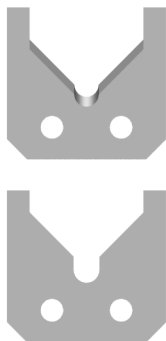
Used in the following **Eubanks** machines:

Model 8000



Eubanks Model 8000 M-Series® Blades (continued)

| Mechtrix Description | Mechtrix Part Number | Blade Form (in) | Diameter (mm) | OEM Part Number |
|-----------------------|----------------------|-----------------|---------------|-----------------|
| E80M-12.5 Strip Blade | 44655 | 0.2953 | 12.5 | - |
| E80M-12.6 Strip Blade | 44656 | 0.2992 | 12.6 | - |
| E80M-12.7 Strip Blade | 44657 | 0.3032 | 12.7 | - |
| E80M-12.8 Strip Blade | 44658 | 0.3071 | 12.8 | - |
| E80M-12.9 Strip Blade | 44659 | 0.3110 | 12.9 | - |
| E80M-13.0 Strip Blade | 44660 | 0.2362 | 13.0 | - |
| E80M-13.1 Strip Blade | 44661 | 0.2795 | 13.1 | - |
| E80M-13.2 Strip Blade | 44662 | 0.2835 | 13.2 | - |
| E80M-13.3 Strip Blade | 44663 | 0.2874 | 13.3 | - |
| E80M-13.4 Strip Blade | 44664 | 0.2913 | 13.4 | - |
| E80M-13.5 Strip Blade | 44665 | 0.2953 | 13.5 | - |
| E80M-13.6 Strip Blade | 44666 | 0.2992 | 13.6 | - |
| E80M-13.7 Strip Blade | 44667 | 0.3032 | 13.7 | - |
| E80M-13.8 Strip Blade | 44668 | 0.3071 | 13.8 | - |
| E80M-13.9 Strip Blade | 44669 | 0.3110 | 13.9 | - |
| E80M-14.0 Strip Blade | 44670 | 0.2362 | 14.0 | - |



Eubanks Model 8000 Die-Type Blades & Guides

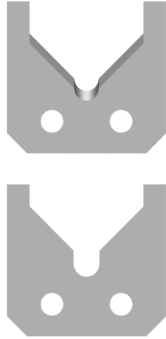
| Mechtrix Description | Mechtrix Part Number | Blade Form (in) | Diameter (mm) | OEM Part Number |
|----------------------|----------------------|-----------------|---------------|-----------------|
| E80D-0.3 Strip Blade | 21895 | 0.0118 | 0.3 | - |
| E80D-0.4 Strip Blade | 27294 | 0.0158 | 0.4 | - |
| E80D-0.5 Strip Blade | 26580 | 0.0197 | 0.5 | - |
| E80D-0.6 Strip Blade | 27297 | 0.0236 | 0.6 | - |
| E80D-0.7 Strip Blade | 26582 | 0.0276 | 0.7 | - |
| E80D-0.8 Strip Blade | 24261 | 0.0315 | 0.8 | - |
| E80D-0.9 Strip Blade | 33197 | 0.0354 | 0.9 | - |
| E80D-1.0 Strip Blade | 23236 | 0.0394 | 1.0 | - |
| E80D-1.1 Strip Blade | 44671 | 0.0433 | 1.1 | - |
| E80D-1.2 Strip Blade | 35333 | 0.0472 | 1.2 | - |
| E80D-1.3 Strip Blade | 37602 | 0.0512 | 1.3 | - |
| E80D-1.4 Strip Blade | 24298 | 0.0551 | 1.4 | - |
| E80D-1.5 Strip Blade | 24893 | 0.0591 | 1.5 | - |
| E80D-1.6 Strip Blade | 44672 | 0.0630 | 1.6 | - |
| E80D-1.7 Strip Blade | 17235 | 0.0669 | 1.7 | - |
| E80D-1.8 Strip Blade | 35336 | 0.0709 | 1.8 | - |
| E80D-1.9 Strip Blade | 44673 | 0.0748 | 1.9 | - |
| E80D-2.0 Strip Blade | 34375 | 0.0787 | 2.0 | - |
| E80D-2.1 Strip Blade | 17231 | 0.0827 | 2.1 | - |
| E80D-2.2 Strip Blade | 35338 | 0.0866 | 2.2 | - |
| E80D-2.3 Strip Blade | 44674 | 0.0906 | 2.3 | - |
| E80D-2.4 Strip Blade | 26584 | 0.0945 | 2.4 | - |
| E80D-2.5 Strip Blade | 32231 | 0.0984 | 2.5 | - |
| E80D-2.6 Strip Blade | 44675 | 0.1024 | 2.6 | - |
| E80D-2.7 Strip Blade | 44676 | 0.1063 | 2.7 | - |

Continued on Next Page

Eubanks 8000 Series Blades

Used in the following **Eubanks** machines:

Model 8000



Eubanks Model 8000 Die-Type Blades & Guides (continued)

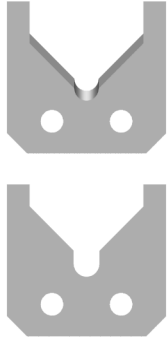
| Mechtrix Description | Mechtrix Part Number | Blade Form Diameter (in) | Blade Form Diameter (mm) | OEM Part Number |
|----------------------|----------------------|--------------------------|--------------------------|-----------------|
| E80D-2.8 Strip Blade | 26045 | 0.1102 | 2.8 | - |
| E80D-2.9 Strip Blade | 20491 | 0.1142 | 2.9 | - |
| E80D-3.0 Strip Blade | 17241 | 0.1181 | 3.0 | - |
| E80D-3.1 Strip Blade | 44677 | 0.1221 | 3.1 | - |
| E80D-3.2 Strip Blade | 44678 | 0.1260 | 3.2 | - |
| E80D-3.3 Strip Blade | 44679 | 0.1299 | 3.3 | - |
| E80D-3.4 Strip Blade | 44680 | 0.1339 | 3.4 | - |
| E80D-3.5 Strip Blade | 44681 | 0.1378 | 3.5 | - |
| E80D-3.6 Strip Blade | 44682 | 0.1417 | 3.6 | - |
| E80D-3.7 Strip Blade | 26944 | 0.1457 | 3.7 | - |
| E80D-3.8 Strip Blade | 22732 | 0.1496 | 3.8 | - |
| E80D-3.9 Strip Blade | 44683 | 0.1535 | 3.9 | - |
| E80D-4.0 Strip Blade | 44684 | 0.1575 | 4.0 | - |
| E80D-4.1 Strip Blade | 29522 | 0.1614 | 4.1 | - |
| E80D-4.2 Strip Blade | 17247 | 0.1654 | 4.2 | - |
| E80D-4.3 Strip Blade | 44685 | 0.1693 | 4.3 | - |
| E80D-4.4 Strip Blade | 44686 | 0.1732 | 4.4 | - |
| E80D-4.5 Strip Blade | 44687 | 0.1772 | 4.5 | - |
| E80D-4.6 Strip Blade | 19559 | 0.1811 | 4.6 | - |
| E80D-4.7 Strip Blade | 30203 | 0.1850 | 4.7 | - |
| E80D-4.8 Strip Blade | 44688 | 0.1890 | 4.8 | - |
| E80D-4.9 Strip Blade | 44689 | 0.1929 | 4.9 | - |
| E80D-5.0 Strip Blade | 30531 | 0.1969 | 5.0 | - |
| E80D-5.1 Strip Blade | 44690 | 0.2008 | 5.1 | - |
| E80D-5.2 Strip Blade | 44691 | 0.2047 | 5.2 | - |
| E80D-5.3 Strip Blade | 44692 | 0.2087 | 5.3 | - |
| E80D-5.4 Strip Blade | 20056 | 0.2126 | 5.4 | - |
| E80D-5.5 Strip Blade | 44693 | 0.2165 | 5.5 | - |
| E80D-5.6 Strip Blade | 44694 | 0.2205 | 5.6 | - |
| E80D-5.7 Strip Blade | 44695 | 0.2244 | 5.7 | - |
| E80D-5.8 Strip Blade | 44696 | 0.2284 | 5.8 | - |
| E80D-5.9 Strip Blade | 44697 | 0.2323 | 5.9 | - |
| E80D-6.0 Strip Blade | 44698 | 0.2362 | 6.0 | - |
| E80D-6.1 Strip Blade | 44699 | 0.2402 | 6.1 | - |
| E80D-6.2 Strip Blade | 44700 | 0.2441 | 6.2 | - |
| E80D-6.3 Strip Blade | 21596 | 0.2480 | 6.3 | - |
| E80D-6.4 Strip Blade | 44701 | 0.2520 | 6.4 | - |
| E80D-6.5 Strip Blade | 44702 | 0.2559 | 6.5 | - |
| E80D-6.6 Strip Blade | 44703 | 0.2598 | 6.6 | - |
| E80D-6.7 Strip Blade | 19561 | 0.2638 | 6.7 | - |
| E80D-6.8 Strip Blade | 30101 | 0.2677 | 6.8 | - |
| E80D-6.9 Strip Blade | 22959 | 0.2717 | 6.9 | - |
| E80D-7.0 Strip Blade | 26945 | 0.2362 | 7.0 | - |
| E80D-7.1 Strip Blade | 21594 | 0.2795 | 7.1 | - |
| E80D-7.2 Strip Blade | 44704 | 0.2835 | 7.2 | - |
| E80D-7.3 Strip Blade | 20053 | 0.2874 | 7.3 | - |
| E80D-7.4 Strip Blade | 35922 | 0.2913 | 7.4 | - |

Continued on Next Page

Eubanks 8000 Series Blades

Used in the following **Eubanks** machines:

Model 8000



Eubanks Model 8000 Die-Type Blades & Guides (continued)

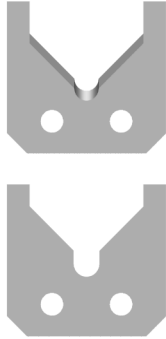
| Mechtrix Description | Mechtrix Part Number | Blade Form (in) | Diameter (mm) | OEM Part Number |
|-----------------------|----------------------|-----------------|---------------|-----------------|
| E80D-7.5 Strip Blade | 44705 | 0.2953 | 7.5 | - |
| E80D-7.6 Strip Blade | 44706 | 0.2992 | 7.6 | - |
| E80D-7.7 Strip Blade | 44707 | 0.3032 | 7.7 | - |
| E80D-7.8 Strip Blade | 44708 | 0.3071 | 7.8 | - |
| E80D-7.9 Strip Blade | 44709 | 0.3110 | 7.9 | - |
| E80D-8.0 Strip Blade | 44710 | 0.2362 | 8.0 | - |
| E80D-8.1 Strip Blade | 44711 | 0.2795 | 8.1 | - |
| E80D-8.2 Strip Blade | 44712 | 0.2835 | 8.2 | - |
| E80D-8.3 Strip Blade | 44713 | 0.2874 | 8.3 | - |
| E80D-8.4 Strip Blade | 44714 | 0.2913 | 8.4 | - |
| E80D-8.5 Strip Blade | 44715 | 0.2953 | 8.5 | - |
| E80D-8.6 Strip Blade | 44716 | 0.2992 | 8.6 | - |
| E80D-8.7 Strip Blade | 44717 | 0.3032 | 8.7 | - |
| E80D-8.8 Strip Blade | 44718 | 0.3071 | 8.8 | - |
| E80D-8.9 Strip Blade | 44719 | 0.3110 | 8.9 | - |
| E80D-9.0 Strip Blade | 44720 | 0.2362 | 9.0 | - |
| E80D-9.1 Strip Blade | 44721 | 0.2795 | 9.1 | - |
| E80D-9.2 Strip Blade | 44722 | 0.2835 | 9.2 | - |
| E80D-9.3 Strip Blade | 44723 | 0.2874 | 9.3 | - |
| E80D-9.4 Strip Blade | 44724 | 0.2913 | 9.4 | - |
| E80D-9.5 Strip Blade | 44725 | 0.2953 | 9.5 | - |
| E80D-9.6 Strip Blade | 44726 | 0.2992 | 9.6 | - |
| E80D-9.7 Strip Blade | 44727 | 0.3032 | 9.7 | - |
| E80D-9.8 Strip Blade | 44728 | 0.3071 | 9.8 | - |
| E80D-9.9 Strip Blade | 44729 | 0.3110 | 9.9 | - |
| E80D-10.0 Strip Blade | 44730 | 0.2362 | 10.0 | - |
| E80D-10.1 Strip Blade | 44731 | 0.2795 | 10.1 | - |
| E80D-10.2 Strip Blade | 44732 | 0.2835 | 10.2 | - |
| E80D-10.3 Strip Blade | 44733 | 0.2874 | 10.3 | - |
| E80D-10.4 Strip Blade | 44734 | 0.2913 | 10.4 | - |
| E80D-10.5 Strip Blade | 34376 | 0.2953 | 10.5 | - |
| E80D-10.6 Strip Blade | 44735 | 0.2992 | 10.6 | - |
| E80D-10.7 Strip Blade | 44736 | 0.3032 | 10.7 | - |
| E80D-10.8 Strip Blade | 44737 | 0.3071 | 10.8 | - |
| E80D-10.9 Strip Blade | 44738 | 0.3110 | 10.9 | - |
| E80D-11.0 Strip Blade | 44739 | 0.2362 | 11.0 | - |
| E80D-11.1 Strip Blade | 44740 | 0.2795 | 11.1 | - |
| E80D-11.2 Strip Blade | 44741 | 0.2835 | 11.2 | - |
| E80D-11.3 Strip Blade | 44742 | 0.2874 | 11.3 | - |
| E80D-11.4 Strip Blade | 44743 | 0.2913 | 11.4 | - |
| E80D-11.5 Strip Blade | 44744 | 0.2953 | 11.5 | - |
| E80D-11.6 Strip Blade | 44745 | 0.2992 | 11.6 | - |
| E80D-11.7 Strip Blade | 44746 | 0.3032 | 11.7 | - |
| E80D-11.8 Strip Blade | 44747 | 0.3071 | 11.8 | - |
| E80D-11.9 Strip Blade | 44748 | 0.3110 | 11.9 | - |
| E80D-12.0 Strip Blade | 44749 | 0.2362 | 12.0 | - |
| E80D-12.1 Strip Blade | 44750 | 0.2795 | 12.1 | - |

Continued on Next Page

Eubanks 8000 Series Blades

Used in the following **Eubanks** machines:

Model 8000



Eubanks Model 8000 Die-Type Blades & Guides (continued)

| Mechtrix Description | Mechtrix Part Number | Blade Form (in) | Diameter (mm) | OEM Part Number |
|-----------------------|----------------------|-----------------|---------------|-----------------|
| E80D-12.2 Strip Blade | 44751 | 0.2835 | 12.2 | - |
| E80D-12.3 Strip Blade | 44752 | 0.2874 | 12.3 | - |
| E80D-12.4 Strip Blade | 44753 | 0.2913 | 12.4 | - |
| E80D-12.5 Strip Blade | 44754 | 0.2953 | 12.5 | - |
| E80D-12.6 Strip Blade | 44755 | 0.2992 | 12.6 | - |
| E80D-12.7 Strip Blade | 44756 | 0.3032 | 12.7 | - |
| E80D-12.8 Strip Blade | 44757 | 0.3071 | 12.8 | - |
| E80D-12.9 Strip Blade | 44758 | 0.3110 | 12.9 | - |
| E80D-13.0 Strip Blade | 44759 | 0.2362 | 13.0 | - |
| E80D-13.1 Strip Blade | 44760 | 0.2795 | 13.1 | - |
| E80D-13.2 Strip Blade | 44761 | 0.2835 | 13.2 | - |
| E80D-13.3 Strip Blade | 44762 | 0.2874 | 13.3 | - |
| E80D-13.4 Strip Blade | 44763 | 0.2913 | 13.4 | - |
| E80D-13.5 Strip Blade | 44764 | 0.2953 | 13.5 | - |
| E80D-13.6 Strip Blade | 44765 | 0.2992 | 13.6 | - |
| E80D-13.7 Strip Blade | 44766 | 0.3032 | 13.7 | - |
| E80D-13.8 Strip Blade | 44767 | 0.3071 | 13.8 | - |
| E80D-13.9 Strip Blade | 44768 | 0.3110 | 13.9 | - |
| E80D-14.0 Strip Blade | 44769 | 0.2362 | 14.0 | - |

* A set of **Die-Type** tooling consists of two (2) **Die-Type** Blades, two (2) **Guides**, & two (2) **Cut-Off** Blades

* A set of **Universal** or **M-Series** Blades consists of two (2) **Universal / M-Series** Strip Blades & two (2) **Cut-Off** Blades