

# CrimpCenter 12 Series Blades

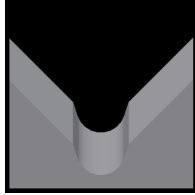
Used in the following *Schleuniger* machines:

CrimpCenter 12

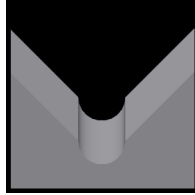
## Available CrimpCenter 12 Blade Form Geometries Include:



Universal



M-Series®



Full-Radius



## Schleuniger CrimpCenter 12 Stripping and Cut-off Blades

Mechtrix Description	Mechtrix Part Number	Blade Form Diameter (in)	Blade Form Diameter (mm)	OEM Part Number
MFCSC-UVS Stripping Blade	25613	-	-	ACA-10516696
MFCSC-UVL Stripping/Cut-off Blade	25614	-	-	ACA-10516697
MFCSC-HDC Heavy Duty Cut-off Blade	25615	-	-	ACA-10516698



## Schleuniger CrimpCenter 12 M-Series® Blades

Mechtrix Description	Mechtrix Part Number	Blade Form Diameter (in)	Blade Form Diameter (mm)	OEM Part Number
MFCSCM-0.3L Strip Blade Long	40897	0.0118	0.3	-
MFCSCM-0.3S Strip Blade Short	40898			
MFCSCM-0.4L Strip Blade Long	40899	0.0158	0.4	-
MFCSCM-0.4S Strip Blade Short	40900			
MFCSCM-0.5L Strip Blade Long	40901	0.0197	0.5	-
MFCSCM-0.5S Strip Blade Short	40902			
MFCSCM-0.6L Strip Blade Long	40903	0.0236	0.6	-
MFCSCM-0.6S Strip Blade Short	40904			
MFCSCM-0.7L Strip Blade Long	40905	0.0276	0.7	-
MFCSCM-0.7S Strip Blade Short	40906			
MFCSCM-0.8L Strip Blade Long	40907	0.0315	0.8	-
MFCSCM-0.8S Strip Blade Short	40908			
MFCSCM-0.9L Strip Blade Long	40909	0.0354	0.9	-
MFCSCM-0.9S Strip Blade Short	40910			
MFCSCM-1.0L Strip Blade Long	40911	0.0394	1.0	-
MFCSCM-1.0S Strip Blade Short	40912			
MFCSCM-1.1L Strip Blade Long	32068	0.0433	1.1	-
MFCSCM-1.1S Strip Blade Short	32069			
MFCSCM-1.2L Strip Blade Long	40913	0.0472	1.2	-
MFCSCM-1.2S Strip Blade Short	40914			
MFCSCM-1.3L Strip Blade Long	40915	0.0512	1.3	-
MFCSCM-1.3S Strip Blade Short	40916			
MFCSCM-1.4L Strip Blade Long	40917	0.0551	1.4	-
MFCSCM-1.4S Strip Blade Short	40918			
MFCSCM-1.5L Strip Blade Long	40919	0.0591	1.5	-
MFCSCM-1.5S Strip Blade Short	40920			
MFCSCM-1.6L Strip Blade Long	40921	0.0630	1.6	-
MFCSCM-1.6S Strip Blade Short	40922			

Continued on Next Page

# CrimpCenter 12 Series Blades

Used in the following *Schleuniger* machines:

CrimpCenter 12



## Schleuniger CrimpCenter 12 M-Series® Blades (continued)

Mechtrix Description	Mechtrix Part Number	Blade Form (in)	Diameter (mm)	OEM Part Number
MFCSCM-1.7L Strip Blade Long	32879	0.0669	1.7	-
MFCSCM-1.7S Strip Blade Short	32880			
MFCSCM-1.8L Strip Blade Long	40923	0.0709	1.8	-
MFCSCM-1.8S Strip Blade Short	40924			
MFCSCM-1.9L Strip Blade Long	40925	0.0748	1.9	-
MFCSCM-1.9S Strip Blade Short	40926			
MFCSCM-2.0L Strip Blade Long	40927	0.0787	2.0	-
MFCSCM-2.0S Strip Blade Short	40928			
MFCSCM-2.1L Strip Blade Long	40929	0.0827	2.1	-
MFCSCM-2.1S Strip Blade Short	40930			
MFCSCM-2.2L Strip Blade Long	40931	0.0866	2.2	-
MFCSCM-2.2S Strip Blade Short	40932			
MFCSCM-2.3L Strip Blade Long	33009	0.0906	2.3	-
MFCSCM-2.3S Strip Blade Short	33010			
MFCSCM-2.4L Strip Blade Long	40933	0.0945	2.4	-
MFCSCM-2.4S Strip Blade Short	40934			
MFCSCM-2.5L Strip Blade Long	40935	0.0984	2.5	-
MFCSCM-2.5S Strip Blade Short	40936			
MFCSCM-2.6L Strip Blade Long	40937	0.1024	2.6	-
MFCSCM-2.6S Strip Blade Short	40938			
MFCSCM-2.7L Strip Blade Long	40939	0.1063	2.7	-
MFCSCM-2.7S Strip Blade Short	40940			
MFCSCM-2.8L Strip Blade Long	40941	0.1102	2.8	-
MFCSCM-2.8S Strip Blade Short	40942			
MFCSCM-2.9L Strip Blade Long	40943	0.1142	2.9	-
MFCSCM-2.9S Strip Blade Short	40944			
MFCSCM-3.0L Strip Blade Long	40945	0.1181	3.0	-
MFCSCM-3.0S Strip Blade Short	40946			
MFCSCM-3.1L Strip Blade Long	40947	0.1221	3.1	-
MFCSCM-3.1S Strip Blade Short	40948			
MFCSCM-3.2L Strip Blade Long	40949	0.1260	3.2	-
MFCSCM-3.2S Strip Blade Short	40950			
MFCSCM-3.3L Strip Blade Long	40951	0.1299	3.3	-
MFCSCM-3.3S Strip Blade Short	40952			
MFCSCM-3.4L Strip Blade Long	40953	0.1339	3.4	-
MFCSCM-3.4S Strip Blade Short	40954			
MFCSCM-3.5L Strip Blade Long	40955	0.1378	3.5	-
MFCSCM-3.5S Strip Blade Short	40956			
MFCSCM-3.6L Strip Blade Long	40957	0.1417	3.6	-
MFCSCM-3.6S Strip Blade Short	40958			
MFCSCM-3.7L Strip Blade Long	40959	0.1457	3.7	-
MFCSCM-3.7S Strip Blade Short	40960			
MFCSCM-3.8L Strip Blade Long	40961	0.1496	3.8	-
MFCSCM-3.8S Strip Blade Short	40962			
MFCSCM-3.9L Strip Blade Long	40963	0.1535	3.9	-
MFCSCM-3.9S Strip Blade Short	40964			

Continued on Next Page

# CrimpCenter 12 Series Blades

Used in the following *Schleuniger* machines:

CrimpCenter 12



## Schleuniger CrimpCenter 12 M-Series® Blades (continued)

Mechtrix Description	Mechtrix Part Number	Blade Form (in)	Diameter (mm)	OEM Part Number
MFCSCM-4.0L Strip Blade Long	40965	0.1575	4.0	-
MFCSCM-4.0S Strip Blade Short	40966			
MFCSCM-4.1L Strip Blade Long	40967	0.1614	4.1	-
MFCSCM-4.1S Strip Blade Short	40968			
MFCSCM-4.2L Strip Blade Long	40969	0.1654	4.2	-
MFCSCM-4.2S Strip Blade Short	40970			
MFCSCM-4.3L Strip Blade Long	40971	0.1693	4.3	-
MFCSCM-4.3S Strip Blade Short	40972			
MFCSCM-4.4L Strip Blade Long	40973	0.1732	4.4	-
MFCSCM-4.4S Strip Blade Short	40974			
MFCSCM-4.5L Strip Blade Long	40975	0.1772	4.5	-
MFCSCM-4.5S Strip Blade Short	40976			
MFCSCM-4.6L Strip Blade Long	40977	0.1811	4.6	-
MFCSCM-4.6S Strip Blade Short	40978			
MFCSCM-4.7L Strip Blade Long	40979	0.1850	4.7	-
MFCSCM-4.7S Strip Blade Short	40980			
MFCSCM-4.8L Strip Blade Long	40981	0.1890	4.8	-
MFCSCM-4.8S Strip Blade Short	40982			
MFCSCM-4.9L Strip Blade Long	40983	0.1929	4.9	-
MFCSCM-4.9S Strip Blade Short	40984			
MFCSCM-5.0L Strip Blade Long	40985	0.1969	5.0	-
MFCSCM-5.0S Strip Blade Short	40986			
MFCSCM-5.1L Strip Blade Long	40987	0.2008	5.1	-
MFCSCM-5.1S Strip Blade Short	40988			
MFCSCM-5.2L Strip Blade Long	40989	0.2047	5.2	-
MFCSCM-5.2S Strip Blade Short	40990			
MFCSCM-5.3L Strip Blade Long	40991	0.2087	5.3	-
MFCSCM-5.3S Strip Blade Short	40992			
MFCSCM-5.4L Strip Blade Long	40993	0.2126	5.4	-
MFCSCM-5.4S Strip Blade Short	40994			
MFCSCM-5.5L Strip Blade Long	40995	0.2165	5.5	-
MFCSCM-5.5S Strip Blade Short	40996			
MFCSCM-5.6L Strip Blade Long	40997	0.2205	5.6	-
MFCSCM-5.6S Strip Blade Short	40998			
MFCSCM-5.7L Strip Blade Long	40999	0.2244	5.7	-
MFCSCM-5.7S Strip Blade Short	41000			
MFCSCM-5.8L Strip Blade Long	41001	0.2284	5.8	-
MFCSCM-5.8S Strip Blade Short	41002			
MFCSCM-5.9L Strip Blade Long	41003	0.2323	5.9	-
MFCSCM-5.9S Strip Blade Short	41004			
MFCSCM-6.0L Strip Blade Long	41005	0.2362	6.0	-
MFCSCM-6.0S Strip Blade Short	41006			

# CrimpCenter 12 Series Blades

Used in the following *Schleuniger* machines:

CrimpCenter 12



## Schleuniger CrimpCenter 12 Full Radius Blades

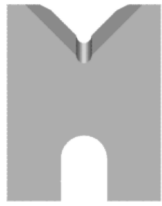
Mechtrix Description	Mechtrix Part Number	Blade Form (in)	Diameter (mm)	OEM Part Number
MFCSC-0.3DL Strip Blade Long	41007	0.0118	0.3	-
MFCSC-0.3DS Strip Blade Short	41008			
MFCSC-0.4DL Strip Blade Long	41009	0.0158	0.4	-
MFCSC-0.4DS Strip Blade Short	41010			
MFCSC-0.5DL Strip Blade Long	41011	0.0197	0.5	-
MFCSC-0.5DS Strip Blade Short	41012			
MFCSC-0.6DL Strip Blade Long	41013	0.0236	0.6	-
MFCSC-0.6DS Strip Blade Short	41014			
MFCSC-0.7DL Strip Blade Long	41015	0.0276	0.7	-
MFCSC-0.7DS Strip Blade Short	41016			
MFCSC-0.8DL Strip Blade Long	41017	0.0315	0.8	-
MFCSC-0.8DS Strip Blade Short	41018			
MFCSC-0.9DL Strip Blade Long	41019	0.0354	0.9	-
MFCSC-0.9DS Strip Blade Short	41020			
MFCSC-1.0DL Strip Blade Long	36369	0.0394	1.0	-
MFCSC-1.0DS Strip Blade Short	36370			
MFCSC-1.1DL Strip Blade Long	41021	0.0433	1.1	-
MFCSC-1.1DS Strip Blade Short	41022			
MFCSC-1.2DL Strip Blade Long	41023	0.0472	1.2	-
MFCSC-1.2DS Strip Blade Short	41024			
MFCSC-1.3DL Strip Blade Long	36371	0.0512	1.3	-
MFCSC-1.3DS Strip Blade Short	36372			
MFCSC-1.4DL Strip Blade Long	41025	0.0551	1.4	-
MFCSC-1.4DS Strip Blade Short	41026			
MFCSC-1.5DL Strip Blade Long	41027	0.0591	1.5	-
MFCSC-1.5DS Strip Blade Short	41028			
MFCSC-1.6DL Strip Blade Long	36373	0.0630	1.6	-
MFCSC-1.6DS Strip Blade Short	36374			
MFCSC-1.7DL Strip Blade Long	41029	0.0669	1.7	-
MFCSC-1.7DS Strip Blade Short	41030			
MFCSC-1.8DL Strip Blade Long	41031	0.0709	1.8	-
MFCSC-1.8DS Strip Blade Short	41032			
MFCSC-1.9DL Strip Blade Long	41033	0.0748	1.9	-
MFCSC-1.9DS Strip Blade Short	41034			
MFCSC-2.0DL Strip Blade Long	41035	0.0787	2.0	-
MFCSC-2.0DS Strip Blade Short	41036			
MFCSC-2.1DL Strip Blade Long	41037	0.0827	2.1	-
MFCSC-2.1DS Strip Blade Short	41038			
MFCSC-2.2DL Strip Blade Long	41039	0.0866	2.2	-
MFCSC-2.2DS Strip Blade Short	41040			
MFCSC-2.3DL Strip Blade Long	41041	0.0906	2.3	-
MFCSC-2.3DS Strip Blade Short	41042			
MFCSC-2.4DL Strip Blade Long	41043	0.0945	2.4	-
MFCSC-2.4DS Strip Blade Short	41044			
MFCSC-2.5DL Strip Blade Long	41045	0.0984	2.5	-
MFCSC-2.5DS Strip Blade Short	41046			

Continued on Next Page

# CrimpCenter 12 Series Blades

Used in the following *Schleuniger* machines:

CrimpCenter 12



## Schleuniger CrimpCenter 12 Full Radius Blades

Mechtrix Description	Mechtrix Part Number	Blade Form (in)	Diameter (mm)	OEM Part Number
MFCSC-2.6DL Strip Blade Long	41047	0.1024	2.6	-
MFCSC-2.6DS Strip Blade Short	41048			
MFCSC-2.7DL Strip Blade Long	41049	0.1063	2.7	-
MFCSC-2.7DS Strip Blade Short	41050			
MFCSC-2.8DL Strip Blade Long	41051	0.1102	2.8	-
MFCSC-2.8DS Strip Blade Short	41052			
MFCSC-2.9DL Strip Blade Long	41053	0.1142	2.9	-
MFCSC-2.9DS Strip Blade Short	41054			
MFCSC-3.0DL Strip Blade Long	41055	0.1181	3.0	-
MFCSC-3.0DS Strip Blade Short	41056			
MFCSC-3.1DL Strip Blade Long	41057	0.1221	3.1	-
MFCSC-3.1DS Strip Blade Short	41058			
MFCSC-3.2DL Strip Blade Long	41059	0.1260	3.2	-
MFCSC-3.2DS Strip Blade Short	41060			
MFCSC-3.3DL Strip Blade Long	41061	0.1299	3.3	-
MFCSC-3.3DS Strip Blade Short	41062			
MFCSC-3.4DL Strip Blade Long	41063	0.1339	3.4	-
MFCSC-3.4DS Strip Blade Short	41064			
MFCSC-3.5DL Strip Blade Long	41065	0.1378	3.5	-
MFCSC-3.5DS Strip Blade Short	41066			
MFCSC-3.6DL Strip Blade Long	41067	0.1417	3.6	-
MFCSC-3.6DS Strip Blade Short	41068			
MFCSC-3.7DL Strip Blade Long	41069	0.1457	3.7	-
MFCSC-3.7DS Strip Blade Short	41070			
MFCSC-3.8DL Strip Blade Long	41071	0.1496	3.8	-
MFCSC-3.8DS Strip Blade Short	41072			
MFCSC-3.9DL Strip Blade Long	41073	0.1535	3.9	-
MFCSC-3.9DS Strip Blade Short	41074			
MFCSC-4.0DL Strip Blade Long	41075	0.1575	4.0	-
MFCSC-4.0DS Strip Blade Short	41076			
MFCSC-4.1DL Strip Blade Long	41077	0.1614	4.1	-
MFCSC-4.1DS Strip Blade Short	41078			
MFCSC-4.2DL Strip Blade Long	41079	0.1654	4.2	-
MFCSC-4.2DS Strip Blade Short	41080			
MFCSC-4.3DL Strip Blade Long	41081	0.1693	4.3	-
MFCSC-4.3DS Strip Blade Short	41082			
MFCSC-4.4DL Strip Blade Long	41083	0.1732	4.4	-
MFCSC-4.4DS Strip Blade Short	41084			
MFCSC-4.5DL Strip Blade Long	41085	0.1772	4.5	-
MFCSC-4.5DS Strip Blade Short	41086			
MFCSC-4.6DL Strip Blade Long	41087	0.1811	4.6	-
MFCSC-4.6DS Strip Blade Short	41088			
MFCSC-4.7DL Strip Blade Long	41089	0.1850	4.7	-
MFCSC-4.7DS Strip Blade Short	41090			
MFCSC-4.8DL Strip Blade Long	41091	0.1890	4.8	-
MFCSC-4.8DS Strip Blade Short	41092			

Continued on Next Page

# CrimpCenter 12 Series Blades

Used in the following *Schleuniger* machines:

CrimpCenter 12



## Schleuniger CrimpCenter 12 Full Radius Blades

Mechtrix Description	Mechtrix Part Number	Blade Form Diameter (in)	Diameter (mm)	OEM Part Number
MFCSC-4.9DL Strip Blade Long	41093	0.1929	4.9	-
MFCSC-4.9DS Strip Blade Short	41094			
MFCSC-5.0DL Strip Blade Long	41095	0.1969	5.0	-
MFCSC-5.0DS Strip Blade Short	41096			
MFCSC-5.1DL Strip Blade Long	41097	0.2008	5.1	-
MFCSC-5.1DS Strip Blade Short	41098			
MFCSC-5.2DL Strip Blade Long	41099	0.2047	5.2	-
MFCSC-5.2DS Strip Blade Short	41100			
MFCSC-5.3DL Strip Blade Long	41101	0.2087	5.3	-
MFCSC-5.3DS Strip Blade Short	41102			
MFCSC-5.4DL Strip Blade Long	41103	0.2126	5.4	-
MFCSC-5.4DS Strip Blade Short	41104			
MFCSC-5.5DL Strip Blade Long	41105	0.2165	5.5	-
MFCSC-5.5DS Strip Blade Short	41106			
MFCSC-5.6DL Strip Blade Long	41107	0.2205	5.6	-
MFCSC-5.6DS Strip Blade Short	41108			
MFCSC-5.7DL Strip Blade Long	41109	0.2244	5.7	-
MFCSC-5.7DS Strip Blade Short	41110			
MFCSC-5.8DL Strip Blade Long	41111	0.2284	5.8	-
MFCSC-5.8DS Strip Blade Short	41112			
MFCSC-5.9DL Strip Blade Long	41113	0.2323	5.9	-
MFCSC-5.9DS Strip Blade Short	41114			
MFCSC-6.0DL Strip Blade Long	41115	0.2362	6.0	-
MFCSC-6.0DS Strip Blade Short	41116			