

CS-9000 Series Blades

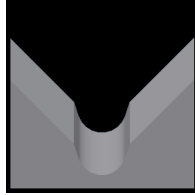
Used in the following *Schleuniger* machines:

CS-9000

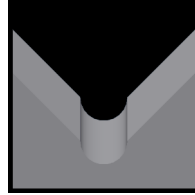
Available CS-9000 Blade Form Geometries Include:



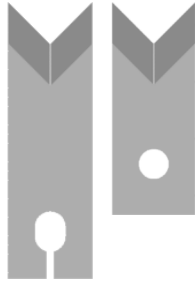
Universal



M-Series®

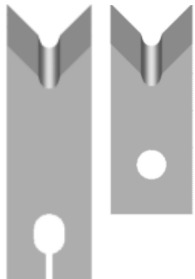


Full-Radius



CS-9000 Universal Blades

Mechtrix Description	Mechtrix Part Number	Blade Form Diameter		OEM Part Number
		(in)	(mm)	
Schleuniger CS-9000 Universal-Short (KS33)	01613-01	-	-	-
Schleuniger CS-9000 Universal-Long (KL33)	01612-01	-	-	-



Schleuniger CS-9000 M-Series® Blades

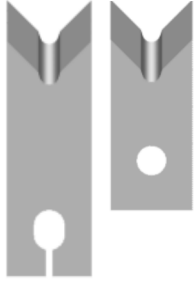
Mechtrix Description	Mechtrix Part Number	Blade Form Diameter		OEM Part Number
		(in)	(mm)	
K33/35M-0.3L Strip Blade Long	16958	0.0118	0.3	-
K33M-0.3S Strip Blade Short	16959			
K33/35M-0.4L Strip Blade Long	15704	0.0158	0.4	-
K33M-0.4S Strip Blade Short	15705			
K33/35M-0.5L Strip Blade Long	15605	0.0197	0.5	-
K33M-0.5S Strip Blade Short	15606			
K33/35M-0.6L Strip Blade Long	19980	0.0236	0.6	-
K33M-0.6S Strip Blade Short	21454			
K33/35M-0.7L Strip Blade Long	10449	0.0276	0.7	-
K33M-0.7S Strip Blade Short	10450			
K33/35M-0.8L Strip Blade Long	16892	0.0315	0.8	-
K33M-0.8S Strip Blade Short	16893			
K33/35M-0.9L Strip Blade Long	24175	0.0354	0.9	-
K33M-0.9S Strip Blade Short	30275			
K33/35M-1.0L Strip Blade Long	15647	0.0394	1.0	-
K33M-1.0S Strip Blade Short	15648			
K33/35M-1.1L Strip Blade Long	15535	0.0433	1.1	-
K33M-1.1S Strip Blade Short	15534			
K33/35M-1.2L Strip Blade Long	15649	0.0472	1.2	-
K33M-1.2S Strip Blade Short	15650			
K33/35M-1.3L Strip Blade Long	18418	0.0512	1.3	-
K33M-1.3S Strip Blade Short	18419			
K33/35M-1.4L Strip Blade Long	14625	0.0551	1.4	-
K33M-1.4S Strip Blade Short	14626			
K33/35M-1.5L Strip Blade Long	18783	0.0591	1.5	-
K33M-1.5S Strip Blade Short	29841			

Continued on Next Page

CS-9000 Series Blades

Used in the following *Schleuniger* machines:

CS-9000



Schleuniger CS-9000 M-Series® Blades (continued)

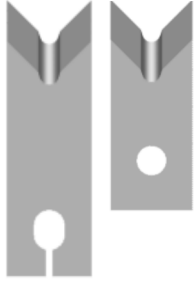
Mechtrix Description	Mechtrix Part Number	Blade Form (in)	Diameter (mm)	OEM Part Number
K33/35M-1.6L Strip Blade Long	9517	0.0630	1.6	-
K33-1.6S Strip Blade Short	9518	0.0630	1.6	-
K33/35M-1.7L Strip Blade Long	39184	0.0669	1.7	-
K33M-1.7S Strip Blade Short	39185	0.0669	1.7	-
K33/35M-1.8L Strip Blade Long	25599	0.0709	1.8	-
K33M-1.8S Strip Blade Short	35939	0.0709	1.8	-
K33/35M-1.9L Strip Blade Long	21432	0.0748	1.9	-
K33M-1.9S Strip Blade Short	39186	0.0748	1.9	-
K33/35M-2.0L Strip Blade Long	16190	0.0787	2.0	-
K33M-2.0S Strip Blade Short	33311	0.0787	2.0	-
K33/35M-2.1L Strip Blade Long	16335	0.0827	2.1	-
K33M-2.1S Strip Blade Short	16336	0.0827	2.1	-
K33/35M-2.2L Strip Blade Long	25600	0.0866	2.2	-
K33M-2.2S Strip Blade Short	39187	0.0866	2.2	-
K33/35M-2.3L Strip Blade Long	36472	0.0906	2.3	-
K33M-2.3S Strip Blade Short	39188	0.0906	2.3	-
K33/35M-2.4L Strip Blade Long	11565	0.0945	2.4	-
K33M-2.4S Strip Blade Short	11564	0.0945	2.4	-
K33/35M-2.5L Strip Blade Long	34417	0.0984	2.5	-
K33M-2.5S Strip Blade Short	39189	0.0984	2.5	-
K33/35M-2.6L Strip Blade Long	39190	0.1024	2.6	-
K33M-2.6S Strip Blade Short	39191	0.1024	2.6	-
K33/35M-2.7L Strip Blade Long	18570	0.1063	2.7	-
K33M-2.7S Strip Blade Short	18571	0.1063	2.7	-
K33/35M-2.8L Strip Blade Long	18572	0.1102	2.8	-
K33M-2.8S Strip Blade Short	18573	0.1102	2.8	-
K33/35M-2.9L Strip Blade Long	39192	0.1142	2.9	-
K33M-2.9S Strip Blade Short	39193	0.1142	2.9	-
K33/35M-3.0L Strip Blade Long	39194	0.1181	3.0	-
K33M-3.0S Strip Blade Short	39195	0.1181	3.0	-
K33/35M-3.1L Strip Blade Long	21763	0.1221	3.1	-
K33M-3.1S Strip Blade Short	39196	0.1221	3.1	-
K33/35M-3.2L Strip Blade Long	39197	0.1260	3.2	-
K33M-3.2S Strip Blade Short	39198	0.1260	3.2	-
K33/35M-3.3L Strip Blade Long	35690	0.1299	3.3	-
K33M-3.3S Strip Blade Short	35691	0.1299	3.3	-
K33/35M-3.4L Strip Blade Long	22795	0.1339	3.4	-
K33M-3.4S Strip Blade Short	22796	0.1339	3.4	-
K33/35M-3.5L Strip Blade Long	39199	0.1378	3.5	-
K33M-3.5S Strip Blade Short	39200	0.1378	3.5	-
K33/35M-3.6L Strip Blade Long	9355	0.1417	3.6	-
K33M-3.6S Strip Blade Short	9356	0.1417	3.6	-
K33/35M-3.7L Strip Blade Long	39201	0.1457	3.7	-
K33-3.7S Strip Blade Short	39202	0.1457	3.7	-
K33/35M-3.8L Strip Blade Long	23607	0.1496	3.8	-
K33M-3.8S Strip Blade Short	39203	0.1496	3.8	-

Continued on Next Page

CS-9000 Series Blades

Used in the following *Schleuniger* machines:

CS-9000



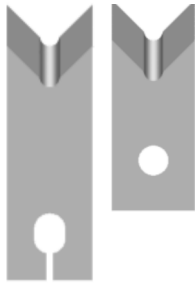
Schleuniger CS-9000 M-Series® Blades (continued)

Mechtrix Description	Mechtrix Part Number	Blade Form (in)	Diameter (mm)	OEM Part Number
K33/35M-3.9L Strip Blade Long	39204	0.1535	3.9	-
K33M-3.9S Strip Blade Short	39205			
K33/35M-4.0L Strip Blade Long	39206	0.1575	4.0	-
K33M-4.0S Strip Blade Short	39207			
K33/35M-4.1L Strip Blade Long	39208	0.1614	4.1	-
K33M-4.1S Strip Blade Short	39209			
K33/35M-4.2L Strip Blade Long	39210	0.1654	4.2	-
K33M-4.2S Strip Blade Short	39211			
K33/35M-4.3L Strip Blade Long	18372	0.1693	4.3	-
K33M-4.3S Strip Blade Short	18371			
K33/35M-4.4L Strip Blade Long	39212	0.1732	4.4	-
K33M-4.4S Strip Blade Short	39213			
K33/35M-4.5L Strip Blade Long	39214	0.1772	4.5	-
K33M-4.5S Strip Blade Short	39215			
K33/35M-4.6L Strip Blade Long	39216	0.1811	4.6	-
K33M-4.6S Strip Blade Short	39217			
K33/35M-4.7L Strip Blade Long	39218	0.1850	4.7	-
K33M-4.7S Strip Blade Short	39219			
K33/35M-4.8L Strip Blade Long	39220	0.1890	4.8	-
K33M-4.8S Strip Blade Short	39221			
K33/35M-4.9L Strip Blade Long	39222	0.1929	4.9	-
K33M-4.9S Strip Blade Short	39223			
K33/35M-5.0L Strip Blade Long	39224	0.1969	5.0	-
K33M-5.0S Strip Blade Short	39225			
K33/35M-5.1L Strip Blade Long	39226	0.2008	5.1	-
K33M-5.1S Strip Blade Short	39227			
K33/35M-5.2L Strip Blade Long	39228	0.2047	5.2	-
K33M-5.2S Strip Blade Short	39229			
K33/35M-5.3L Strip Blade Long	39230	0.2087	5.3	-
K33M-5.3S Strip Blade Short	39231			
K33/35M-5.4L Strip Blade Long	39232	0.2126	5.4	-
K33M-5.4S Strip Blade Short	39233			
K33/35M-5.5L Strip Blade Long	39234	0.2165	5.5	-
K33M-5.5S Strip Blade Short	39235			
K33/35M-5.6L Strip Blade Long	39236	0.2205	5.6	-
K33M-5.6S Strip Blade Short	39237			
K33/35M-5.7L Strip Blade Long	39238	0.2244	5.7	-
K33M-5.7S Strip Blade Short	39239			
K33/35M-5.8L Strip Blade Long	39240	0.2284	5.8	-
K33M-5.8S Strip Blade Short	39241			
K33/35M-5.9L Strip Blade Long	39242	0.2323	5.9	-
K33M-5.9S Strip Blade Short	39243			
K33/35M-6.0L Strip Blade Long	39244	0.2362	6.0	-
K33M-6.0S Strip Blade Short	39245			

CS-900 Series Blades

Used in the following *Schleuniger* machines:

CS-9000



Schleuniger CS-9000 Full Radius Blades

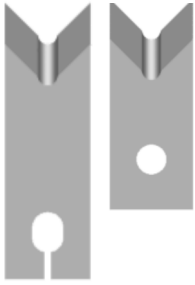
Mechtrix Description	Mechtrix Part Number	Blade Form (in)	Diameter (mm)	OEM Part Number
K33/35-0.3DL Strip Blade Long	25320	0.0118	0.3	-
K33-0.3DS Strip Blade Short	25321			
K33/35-0.4DL Strip Blade Long	17624	0.0158	0.4	-
K33-0.4DS Strip Blade Short	17625			
K33/35-0.5DL Strip Blade Long	16774	0.0197	0.5	-
K33-0.5DS Strip Blade Short	16775			
K33/35-0.6DL Strip Blade Long	17870	0.0236	0.6	-
K33-0.6DS Strip Blade Short	16976			
K33/35-0.7DL Strip Blade Long	11059	0.0276	0.7	-
K33-0.7DS Strip Blade Short	11060			
K33/35-0.8DL Strip Blade Long	18102	0.0315	0.8	-
K33-0.8DS Strip Blade Short	18103			
K33/35-0.9DL Strip Blade Long	18157	0.0354	0.9	-
K33-0.9DS Strip Blade Short	30276			
K33/35-1.0DL Strip Blade Long	13465	0.0394	1.0	-
K33-1.0DS Strip Blade Short	13466			
K33/35-1.1DL Strip Blade Long	18180	0.0433	1.1	-
K33-1.1DS Strip Blade Short	39246			
K33/35-1.2DL Strip Blade Long	39247	0.0472	1.2	-
K33-1.2DS Strip Blade Short	39248			
K33/35-1.3DL Strip Blade Long	14287	0.0512	1.3	-
K33-1.3DS Strip Blade Short	14288			
K33/35-1.4DL Strip Blade Long	32472	0.0551	1.4	-
K33-1.4DS Strip Blade Short	39249			
K33/35-1.5DL Strip Blade Long	17621	0.0591	1.5	-
K33-1.5DS Strip Blade Short	17622			
K33/35-1.6DL Strip Blade Long	35469	0.0630	1.6	-
K33-1.6DS Strip Blade Short	35470			
K33/35-1.7DL Strip Blade Long	34210	0.0669	1.7	-
K33-1.7DS Strip Blade Short	39250			
K33/35-1.8DL Strip Blade Long	17641	0.0709	1.8	-
K33-1.8DS Strip Blade Short	17642			
K33/35-1.9DL Strip Blade Long	39251	0.0748	1.9	-
K33-1.9DS Strip Blade Short	39252			
K33/35-2.0DL Strip Blade Long	35952	0.0787	2.0	-
K33-2.0DS Strip Blade Short	39253			
K33/35-2.1DL Strip Blade Long	35471	0.0827	2.1	-
K33-2.1DS Strip Blade Short	35472			
K33/35-2.2DL Strip Blade Long	39254	0.0866	2.2	-
K33-2.2DS Strip Blade Short	39255			
K33/35-2.3DL Strip Blade Long	39256	0.0906	2.3	-
K33-2.3DS Strip Blade Short	39257			
K33/35-2.4DL Strip Blade Long	39258	0.0945	2.4	-
K33-2.4DS Strip Blade Short	39259			
K33/35-2.5DL Strip Blade Long	39260	0.0984	2.5	-
K33-2.5DS Strip Blade Short	39261			

Continued on Next Page

CS-9000 Series Blades

Used in the following *Schleuniger* machines:

CS-9000



Schleuniger CS-9000 Full Radius Blades (continued)

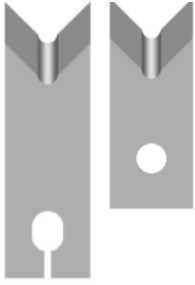
Mechtrix Description	Mechtrix Part Number	Blade Form (in)	Diameter (mm)	OEM Part Number
K33/35-2.6DL Strip Blade Long	39262	0.1024	2.6	-
K33-2.6DS Strip Blade Short	39263			
K33/35-2.7DL Strip Blade Long	39264	0.1063	2.7	-
K33-2.7DS Strip Blade Short	39265			
K33/35-2.8DL Strip Blade Long	39266	0.1102	2.8	-
K33-2.8DS Strip Blade Short	39267			
K33/35-2.9DL Strip Blade Long	39268	0.1142	2.9	-
K33-2.9DS Strip Blade Short	39269			
K33/35-3.0DL Strip Blade Long	39270	0.1181	3.0	-
K33-3.0DS Strip Blade Short	39271			
K33/35-3.1DL Strip Blade Long	39272	0.1221	3.1	-
K33-3.1DS Strip Blade Short	39273			
K33/35-3.2DL Strip Blade Long	39274	0.1260	3.2	-
K33-3.2DS Strip Blade Short	39275			
K33/35-3.3DL Strip Blade Long	39276	0.1299	3.3	-
K33-3.3DS Strip Blade Short	39277			
K33/35-3.4DL Strip Blade Long	35146	0.1339	3.4	-
K33-3.4DS Strip Blade Short	39278			
K33/35-3.5DL Strip Blade Long	39279	0.1378	3.5	-
K33-3.5DS Strip Blade Short	39280			
K33/35-3.6DL Strip Blade Long	39281	0.1417	3.6	-
K33-3.6DS Strip Blade Short	39282			
K33/35-3.7DL Strip Blade Long	39283	0.1457	3.7	-
K33-3.7DS Strip Blade Short	39284			
K33/35-3.8DL Strip Blade Long	39285	0.1496	3.8	-
K33-3.8DS Strip Blade Short	39286			
K33/35-3.9DL Strip Blade Long	39287	0.1535	3.9	-
K33-3.9DS Strip Blade Short	39288			
K33/35-4.0DL Strip Blade Long	39289	0.1575	4.0	-
K33-4.0DS Strip Blade Short	39290			
K33/35-4.1DL Strip Blade Long	39291	0.1614	4.1	-
K33-4.1DS Strip Blade Short	39292			
K33/35-4.2DL Strip Blade Long	39293	0.1654	4.2	-
K33-4.2DS Strip Blade Short	39294			
K33/35-4.3DL Strip Blade Long	18367	0.1693	4.3	-
K33-4.3DS Strip Blade Short	18368			
K33/35-4.4DL Strip Blade Long	39295	0.1732	4.4	-
K33-4.4DS Strip Blade Short	39296			
K33/35-4.5DL Strip Blade Long	39297	0.1772	4.5	-
K33-4.5DS Strip Blade Short	39298			
K33/35-4.6DL Strip Blade Long	39299	0.1811	4.6	-
K33-4.6DS Strip Blade Short	39300			
K33/35-4.7DL Strip Blade Long	39301	0.1850	4.7	-
K33-4.7DS Strip Blade Short	39302			
K33/35-4.8DL Strip Blade Long	39303	0.1890	4.8	-
K33-4.8DS Strip Blade Short	39304			

Continued on Next Page

CS-9000 Series Blades

Used in the following *Schleuniger* machines:

CS-9000



Schleuniger CS-9000 Full Radius Blades (continued)

Mechtrix Description	Mechtrix Part Number	Blade Form Diameter (in)	Diameter (mm)	OEM Part Number
K33/35-4.9DL Strip Blade Long	39305	0.1929	4.9	-
K33-4.9DS Strip Blade Short	39306			
K33/35-5.0DL Strip Blade Long	39307	0.1969	5.0	-
K33-5.0DS Strip Blade Short	36396			
K33/35-5.1DL Strip Blade Long	39308	0.2008	5.1	-
K33-5.1DS Strip Blade Short	39309			
K33/35-5.2DL Strip Blade Long	39310	0.2047	5.2	-
K33-5.2DS Strip Blade Short	39311			
K33/35-5.3DL Strip Blade Long	39312	0.2087	5.3	-
K33-5.3DS Strip Blade Short	39313			
K33/35-5.4DL Strip Blade Long	39314	0.2126	5.4	-
K33-5.4DS Strip Blade Short	39315			
K33/35-5.5DL Strip Blade Long	39316	0.2165	5.5	-
K33-5.5DS Strip Blade Short	39317			
K33/35-5.6DL Strip Blade Long	39318	0.2205	5.6	-
K33-5.6DS Strip Blade Short	39319			
K33/35-5.7DL Strip Blade Long	39320	0.2244	5.7	-
K33-5.7DS Strip Blade Short	39321			
K33/35-5.8DL Strip Blade Long	39322	0.2284	5.8	-
K33-5.8DS Strip Blade Short	39323			
K33/35-5.9DL Strip Blade Long	39324	0.2323	5.9	-
K33-5.9DS Strip Blade Short	39325			
K33/35-6.0DL Strip Blade Long	39326	0.2362	6.0	-
K33-6.0DS Strip Blade Short	39327			