

# CS-600 Series Blades

Used in the following Artos machines:

CS-600

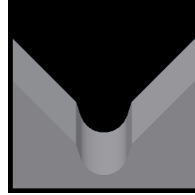
Available CS-600 Blade Form Geometries Include:



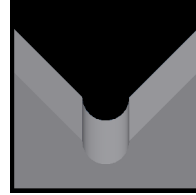
Universal



V-Style



M-Series®



Full-Radius



## CS-600 Universal Stripping and Cut-off Blades

Mechtrix Description	Mechtrix Part Number	Blade Form Diameter (in)	Blade Form Diameter (mm)	OEM Part Number
CS600MCR-30 Universal Strip Blade	21548-CT1	-	-	132921-1
CS600MCR-20 Universal Strip Blade	21549-CT1	-	-	132921-2
CS600UV-90 Universal Strip Blade	21550-CT1	-	-	12136
CS600CL Cut-off Blade	14645-CT1	-	-	121635-1



## CS-600 V-Style Series Stripping Blades

Mechtrix Description	Mechtrix Part Number	Blade Form Diameter (in)	Blade Form Diameter (mm)	OEM Part Number
CS600V-012 Strip Blade	21555-CT1	0.01200	0.30	132737-1
CS600V-022 Strip Blade	21556-CT1	0.02200	0.56	132737-2
CS600V-034 Strip Blade	21557-CT1	0.03400	0.86	132737-3
CS600V-042 Strip Blade	21558-CT1	0.04200	1.07	132737-4
CS600V-052 Strip Blade	14643-CT1	0.05200	1.32	132737-5
CS600V-062 Strip Blade	21559-CT1	0.06200	1.57	132737-6
CS600V-076 Strip Blade	14644-CT1	0.07600	1.93	132737-7
CS600V-096 Strip Blade	21560-CT1	0.09600	2.44	132737-8
CS600V-112 Strip Blade	21561-CT1	0.11200	2.84	132737-9
CS600V-172 Strip Blade	21562-CT1	0.17200	4.37	132737-10
CS600V-222 Strip Blade	21563-CT1	0.22200	5.64	132737-11



## Mechtrix CS-600 M-Series® Blades

Mechtrix Description	Mechtrix Part Number	Blade Form Diameter (in)	Blade Form Diameter (mm)	OEM Part Number
CS600M-0.3 Strip Blade	40737	0.0118	0.3	-
CS600M-0.4 Strip Blade	40738	0.0158	0.4	-
CS600M-0.5 Strip Blade	40739	0.0197	0.5	-
CS600M-0.6 Strip Blade	17690	0.0236	0.6	-
CS600M-0.7 Strip Blade	17871	0.0276	0.7	-
CS600M-0.8 Strip Blade	40740	0.0315	0.8	-
CS600M-0.9 Strip Blade	40741	0.0354	0.9	-
CS600M-1.0 Strip Blade	18276	0.0394	1.0	-
CS600M-1.1 Strip Blade	40742	0.0433	1.1	-
CS600M-1.2 Strip Blade	18277	0.0472	1.2	-
CS600M-1.3 Strip Blade	18278	0.0512	1.3	-
CS600M-1.4 Strip Blade	33482	0.0551	1.4	-

Continued on Next Page

# CS-600 Series Blades

Used in the following Artos machines:

CS-600



## Mechtrix CS-600 M-Series® Blades (continued)

Mechtrix Description	Mechtrix Part Number	Blade Form Diameter (in)	Diameter (mm)	OEM Part Number
CS600M-1.5 Strip Blade	40743	0.0591	1.5	-
CS600M-1.6 Strip Blade	33483	0.0630	1.6	-
CS600M-1.7 Strip Blade	40744	0.0669	1.7	-
CS600M-1.8 Strip Blade	40745	0.0709	1.8	-
CS600M-1.9 Strip Blade	33484	0.0748	1.9	-
CS600M-2.0 Strip Blade	40746	0.0787	2.0	-
CS600M-2.1 Strip Blade	18963	0.0827	2.1	-
CS600M-2.2 Strip Blade	40747	0.0866	2.2	-
CS600M-2.3 Strip Blade	33485	0.0906	2.3	-
CS600M-2.4 Strip Blade	40748	0.0945	2.4	-
CS600M-2.5 Strip Blade	40749	0.0984	2.5	-
CS600M-2.6 Strip Blade	40750	0.1024	2.6	-
CS600M-2.7 Strip Blade	40751	0.1063	2.7	-
CS600M-2.8 Strip Blade	40752	0.1102	2.8	-
CS600M-2.9 Strip Blade	40753	0.1142	2.9	-
CS600M-3.0 Strip Blade	40754	0.1181	3.0	-
CS600M-3.1 Strip Blade	40755	0.1221	3.1	-
CS600M-3.2 Strip Blade	40756	0.1260	3.2	-
CS600M-3.3 Strip Blade	40757	0.1299	3.3	-
CS600M-3.4 Strip Blade	40758	0.1339	3.4	-
CS600M-3.5 Strip Blade	40759	0.1378	3.5	-
CS600M-3.6 Strip Blade	40760	0.1417	3.6	-
CS600M-3.7 Strip Blade	40761	0.1457	3.7	-
CS600M-3.8 Strip Blade	18445	0.1496	3.8	-
CS600M-3.9 Strip Blade	40762	0.1535	3.9	-
CS600M-4.0 Strip Blade	40763	0.1575	4.0	-



## Mechtrix CS-600 Full Radius Blades

Mechtrix Description	Mechtrix Part Number	Blade Form Diameter (in)	Diameter (mm)	OEM Part Number
CS600-0.3D Strip Blade	40774	0.0118	0.3	-
CS600-0.4D Strip Blade	40775	0.0158	0.4	-
CS600-0.5D Strip Blade	40776	0.0197	0.5	-
CS600-0.6D Strip Blade	40777	0.0236	0.6	-
CS600-0.7D Strip Blade	40778	0.0276	0.7	-
CS600-0.8D Strip Blade	40779	0.0315	0.8	-
CS600-0.9D Strip Blade	40780	0.0354	0.9	-
CS600-1.0D Strip Blade	40781	0.0394	1.0	-
CS600-1.1D Strip Blade	40782	0.0433	1.1	-
CS600-1.2D Strip Blade	31319	0.0472	1.2	-
CS600-1.3D Strip Blade	40782	0.0512	1.3	-
CS600-1.4D Strip Blade	40783	0.0551	1.4	-
CS600-1.5D Strip Blade	40785	0.0591	1.5	-
CS600-1.6D Strip Blade	40786	0.0630	1.6	-
CS600-1.7D Strip Blade	40787	0.0669	1.7	-
CS600-1.8D Strip Blade	40788	0.0709	1.8	-

Continued on Next Page

# CS-600 Series Blades

Used in the following Artos machines:

CS-600



## Mechtrix CS-600 Full Radius Blades (continued)

Mechtrix Description	Mechtrix	Blade Form	Diameter	OEM
CS600-1.9D Strip Blade	40789	0.0748	1.9	-
CS600-2.0D Strip Blade	40790	0.0787	2.0	-
CS600-2.1D Strip Blade	40791	0.0827	2.1	-
CS600-2.2D Strip Blade	40792	0.0866	2.2	-
CS600-2.3D Strip Blade	40793	0.0906	2.3	-
CS600-2.4D Strip Blade	40794	0.0945	2.4	-
CS600-2.5D Strip Blade	40795	0.0984	2.5	-
CS600-2.6D Strip Blade	40796	0.1024	2.6	-
CS600-2.7D Strip Blade	40797	0.1063	2.7	-
CS600-2.8D Strip Blade	40798	0.1102	2.8	-
CS600-2.9D Strip Blade	40799	0.1142	2.9	-
CS600-3.0D Strip Blade	40800	0.1181	3.0	-
CS600-3.1D Strip Blade	40801	0.1221	3.1	-
CS600-3.2D Strip Blade	40802	0.1260	3.2	-
CS600-3.3D Strip Blade	40803	0.1299	3.3	-
CS600-3.4D Strip Blade	40804	0.1339	3.4	-
CS600-3.5D Strip Blade	40805	0.1378	3.5	-
CS600-3.6D Strip Blade	40806	0.1417	3.6	-
CS600-3.7D Strip Blade	40807	0.1457	3.7	-
CS600-3.8D Strip Blade	40808	0.1496	3.8	-
CS600-3.9D Strip Blade	40809	0.1535	3.9	-
CS600-4.0D Strip Blade	40810	0.1575	4.0	-
CS600-4.1D Strip Blade	40811	0.1614	4.1	-
CS600-4.2D Strip Blade	40812	0.1654	4.2	-
CS600-4.3D Strip Blade	40813	0.1693	4.3	-
CS600-4.4D Strip Blade	40814	0.1732	4.4	-
CS600-4.5D Strip Blade	40825	0.1772	4.5	-
CS600-4.6D Strip Blade	31320	0.1811	4.6	-
CS600-4.7D Strip Blade	40816	0.1850	4.7	-
CS600-4.8D Strip Blade	40817	0.1890	4.8	-
CS600-4.9D Strip Blade	40818	0.1929	4.9	-
CS600-5.0D Strip Blade	40819	0.1969	5.0	-