

C377 Series Blades

Used in the following *Kodera* machines:

Casting C377

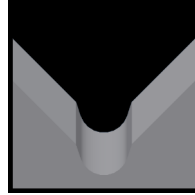
Available C377 Blade Form Geometries Include:



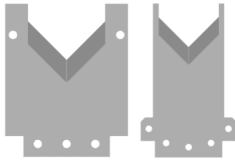
Universal



V-Style

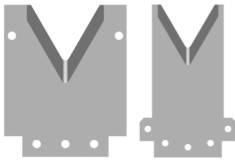


M-Series®



Casting C377 Universal Blades

Mechtrix Description	Mechtrix Part Number	Blade Form Diameter		OEM Part Number
		(in)	(mm)	
Casting C377UV-Upper Universal Blade	22061	-	-	C377-105-A
Casting C377UV-Lower Universal Blade	22062			



Casting C377 V-Types Blades

Mechtrix Description	Mechtrix Part Number	Blade Form Diameter		OEM Part Number
		(in)	(mm)	
C377V-0.3 Strip Blade Upper	39912	0.0118	0.3	-
C377V-0.3 Strip Blade Lower	39911			
C377V-0.4 Strip Blade Upper	39914	0.0158	0.4	-
C377V-0.4 Strip Blade Lower	39913			
C377V-0.5 Strip Blade Upper	39916	0.0197	0.5	-
C377V-0.5 Strip Blade Lower	39915			
C377V-0.6 Strip Blade Upper	39918	0.0236	0.6	-
C377V-0.6 Strip Blade Lower	39917			
C377V-0.7 Strip Blade Upper	39920	0.0276	0.7	-
C377V-0.7 Strip Blade Lower	39919			
C377V-0.8 Strip Blade Upper	39922	0.0315	0.8	-
C377V-0.8 Strip Blade Lower	39921			
C377V-0.9 Strip Blade Upper	39924	0.0354	0.9	-
C377V-0.9 Strip Blade Lower	39923			
C377V-1.0 Strip Blade Upper	39926	0.0394	1.0	-
C377V-1.0 Strip Blade Lower	39925			
C377V-1.1 Strip Blade Upper	39928	0.0433	1.1	-
C377V-1.1 Strip Blade Lower	39927			
C377V-1.2 Strip Blade Upper	39930	0.0472	1.2	-
C377V-1.2 Strip Blade Lower	39929			
C377V-1.3 Strip Blade Upper	39932	0.0512	1.3	-
C377V-1.3 Strip Blade Lower	39931			
C377V-1.4 Strip Blade Upper	39934	0.0551	1.4	-
C377V-1.4 Strip Blade Lower	39933			
C377V-1.5 Strip Blade Upper	39936	0.0591	1.5	-
C377V-1.5 Strip Blade Lower	39935			
C377V-1.6 Strip Blade Upper	39938	0.0630	1.6	-
C377V-1.6 Strip Blade Lower	39937			
C377V-1.7 Strip Blade Upper	39940	0.0669	1.7	-
C377V-1.7 Strip Blade Lower	39939			

Continued on Next Page

C377 Series Blades

Used in the following *Kodera* machines:

Casting C377



Casting C377 V-Types Blades (continued)

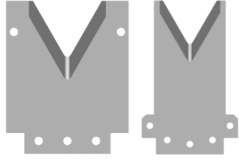
Mechtrix Description	Mechtrix Part Number	Blade Form Diameter (in)	Diameter (mm)	OEM Part Number
C377V-1.8 Strip Blade Upper	39942	0.0709	1.8	-
C377V-1.8 Strip Blade Lower	39941			
C377V-1.9 Strip Blade Upper	39944	0.0748	1.9	-
C377V-1.9 Strip Blade Lower	39943			
C377V-2.0 Strip Blade Upper	39946	0.0787	2.0	-
C377V-2.0 Strip Blade Lower	39945			
C377V-2.1 Strip Blade Upper	39948	0.0827	2.1	-
C377V-2.1 Strip Blade Lower	39947			
C377V-2.2 Strip Blade Upper	23741	0.0866	2.2	-
C377V-2.2 Strip Blade Lower	23740			
C377V-2.3 Strip Blade Upper	39950	0.0906	2.3	-
C377V-2.3 Strip Blade Lower	39949			
C377V-2.4 Strip Blade Upper	39952	0.0945	2.4	-
C377V-2.4 Strip Blade Lower	39951			
C377V-2.5 Strip Blade Upper	39954	0.0984	2.5	-
C377V-2.5 Strip Blade Lower	39953			
C377V-2.6 Strip Blade Upper	23739	0.1024	2.6	-
C377V-2.6 Strip Blade Lower	23738			
C377V-2.7 Strip Blade Upper	39956	0.1063	2.7	-
C377V-2.7 Strip Blade Lower	39955			
C377V-2.8 Strip Blade Upper	39958	0.1102	2.8	-
C377V-2.8 Strip Blade Lower	39957			
C377V-2.9 Strip Blade Upper	39960	0.1142	2.9	-
C377V-2.9 Strip Blade Lower	39959			
C377V-3.0 Strip Blade Upper	37219	0.1181	3.0	-
C377V-3.0 Strip Blade Lower	24738			
C377V-3.1 Strip Blade Upper	39962	0.1221	3.1	-
C377V-3.1 Strip Blade Lower	39961			
C377V-3.2 Strip Blade Upper	37219	0.1260	3.2	-
C377V-3.2 Strip Blade Lower	37218			
C377V-3.3 Strip Blade Upper	27691	0.1299	3.3	-
C377V-3.3 Strip Blade Lower	27690			
C377V-3.4 Strip Blade Upper	39964	0.1339	3.4	-
C377V-3.4 Strip Blade Lower	39963			
C377V-3.5 Strip Blade Upper	24918	0.1378	3.5	-
C377V-3.5 Strip Blade Lower	24917			
C377V-3.6 Strip Blade Upper	24150	0.1417	3.6	-
C377V-3.6 Strip Blade Lower	24149			
C377V-3.7 Strip Blade Upper	23743	0.1457	3.7	-
C377V-3.7 Strip Blade Lower	23742			
C377V-3.8 Strip Blade Upper	24161	0.1496	3.8	-
C377V-3.8 Strip Blade Lower	24162			
C377V-3.9 Strip Blade Upper	39966	0.1535	3.9	-
C377V-3.9 Strip Blade Lower	39965			
C377V-4.0 Strip Blade Upper	37221	0.1575	4.0	-
C377V-4.0 Strip Blade Lower	37220			

Continued on Next Page

C377 Series Blades

Used in the following *Kodera* machines:

Casting C377



Casting C377 V-Types Blades (continued)

Mechtrix Description	Mechtrix Part Number	Blade Form (in)	Diameter (mm)	OEM Part Number
C377V-4.1 Strip Blade Upper	22070	0.1614	4.1	-
C377V-4.1 Strip Blade Lower	22069			
C377V-4.2 Strip Blade Upper	39968	0.1654	4.2	-
C377V-4.2 Strip Blade Lower	39967			
C377V-4.3 Strip Blade Upper	27177	0.1693	4.3	-
C377V-4.3 Strip Blade Lower	27176			
C377V-4.4 Strip Blade Upper	39970	0.1732	4.4	-
C377V-4.4 Strip Blade Lower	39969			
C377V-4.5 Strip Blade Upper	39972	0.1772	4.5	-
C377V-4.5 Strip Blade Lower	39971			
C377V-4.6 Strip Blade Upper	27175	0.1811	4.6	-
C377V-4.6 Strip Blade Lower	27174			
C377V-4.7 Strip Blade Upper	37223	0.1850	4.7	-
C377V-4.7 Strip Blade Lower	37222			
C377V-4.8 Strip Blade Upper	24164	0.1890	4.8	-
C377V-4.8 Strip Blade Lower	24163			
C377V-4.9 Strip Blade Upper	24148	0.1929	4.9	-
C377V-4.9 Strip Blade Lower	24147			
C377V-5.0 Strip Blade Upper	24713	0.1969	5.0	-
C377V-5.0 Strip Blade Lower	24712			
C377V-5.1 Strip Blade Upper	39974	0.2008	5.1	-
C377V-5.1 Strip Blade Lower	39973			
C377V-5.2 Strip Blade Upper	39976	0.2047	5.2	-
C377V-5.2 Strip Blade Lower	39975			
C377V-5.3 Strip Blade Upper	25476	0.2087	5.3	-
C377V-5.3 Strip Blade Lower	25475			
C377V-5.4 Strip Blade Upper	22067	0.2126	5.4	-
C377V-5.4 Strip Blade Lower	22068			
C377V-5.5 Strip Blade Upper	37225	0.2165	5.5	-
C377V-5.5 Strip Blade Lower	37224			
C377V-5.6 Strip Blade Upper	39978	0.2205	5.6	-
C377V-5.6 Strip Blade Lower	39977			
C377V-5.7 Strip Blade Upper	24166	0.2244	5.7	-
C377V-5.7 Strip Blade Lower	24165			
C377V-5.8 Strip Blade Upper	39980	0.2284	5.8	-
C377V-5.8 Strip Blade Lower	39979			
C377V-5.9 Strip Blade Upper	25474	0.2323	5.9	-
C377V-5.9 Strip Blade Lower	25473			
C377V-6.0 Strip Blade Upper	24264	0.2362	6.0	-
C377V-6.0 Strip Blade Lower	24264			
C377V-6.1 Strip Blade Upper	23745	0.2402	6.1	-
C377V-6.1 Strip Blade Lower	23744			
C377V-6.2 Strip Blade Upper	39980	0.2441	6.2	-
C377V-6.2 Strip Blade Lower	39979			
C377V-6.3 Strip Blade Upper	28126	0.2480	6.3	-
C377V-6.3 Strip Blade Lower	28127			

Continued on Next Page

C377 Series Blades

Used in the following *Kodera* machines:

Casting C377



Casting C377 V-Types Blades (continued)

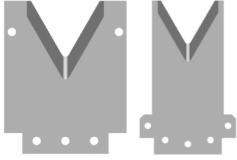
Mechtrix Description	Mechtrix Part Number	Blade Form (in)	Diameter (mm)	OEM Part Number
C377V-6.4 Strip Blade Upper	39984	0.2520	6.4	-
C377V-6.4 Strip Blade Lower	39983			
C377V-6.5 Strip Blade Upper	39986	0.2559	6.5	-
C377V-6.5 Strip Blade Lower	39987			
C377V-6.6 Strip Blade Upper	39988	0.2598	6.6	-
C377V-6.6 Strip Blade Lower	39987			
C377V-6.7 Strip Blade Upper	28681	0.2638	6.7	-
C377V-6.7 Strip Blade Lower	28680			
C377V-6.8 Strip Blade Upper	27620	0.2677	6.8	-
C377V-6.8 Strip Blade Lower	27619			
C377V-6.9 Strip Blade Upper	23747	0.2717	6.9	-
C377V-6.9 Strip Blade Lower	23746			
C377V-7.0 Strip Blade Upper	24160	0.2756	7.0	-
C377V-7.0 Strip Blade Lower	24159			
C377V-7.1 Strip Blade Upper	33929	0.2795	7.1	-
C377V-7.1 Strip Blade Lower	33928			
C377V-7.2 Strip Blade Upper	27179	0.2835	7.2	-
C377V-7.2 Strip Blade Lower	27278			
C377V-7.3 Strip Blade Upper	39990	0.2874	7.3	-
C377V-7.3 Strip Blade Lower	39989			
C377V-7.4 Strip Blade Upper	25478	0.2913	7.4	-
C377V-7.4 Strip Blade Lower	25477			
C377V-7.5 Strip Blade Upper	24158	0.2953	7.5	-
C377V-7.5 Strip Blade Lower	24157			
C377V-7.6 Strip Blade Upper	39992	0.2992	7.6	-
C377V-7.6 Strip Blade Lower	39991			
C377V-7.7 Strip Blade Upper	23752	0.3032	7.7	-
C377V-7.7 Strip Blade Lower	23751			
C377V-7.8 Strip Blade Upper	24715	0.3071	7.8	-
C377V-7.8 Strip Blade Lower	24714			
C377V-7.9 Strip Blade Upper	24267	0.3110	7.9	-
C377V-7.9 Strip Blade Lower	24266			
C377V-8.0 Strip Blade Upper	23076	0.3150	8.0	-
C377V-8.0 Strip Blade Lower	23077			
C377V-8.1 Strip Blade Upper	39994	0.3189	8.1	-
C377V-8.1 Strip Blade Lower	39993			
C377V-8.2 Strip Blade Upper	25549	0.3228	8.2	-
C377V-8.2 Strip Blade Lower	25548			
C377V-8.3 Strip Blade Upper	24688	0.3268	8.3	-
C377V-8.3 Strip Blade Lower	24687			
C377V-8.4 Strip Blade Upper	39996	0.3307	8.4	-
C377V-8.4 Strip Blade Lower	39995			
C377V-8.5 Strip Blade Upper	24156	0.3346	8.5	-
C377V-8.5 Strip Blade Lower	24155			
C377V-8.6 Strip Blade Upper	39998	0.3386	8.6	-
C377V-8.6 Strip Blade Lower	39997			

Continued on Next Page

C377 Series Blades

Used in the following *Kodera* machines:

Casting C377



Casting C377 V-Types Blades (continued)

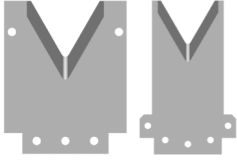
Mechtrix Description	Mechtrix	Blade Form Diameter		OEM
	Part Number	(in)	(mm)	Part Number
C377V-8.7 Strip Blade Upper	25480	0.3425	8.7	-
C377V-8.7 Strip Blade Lower	25479			
C377V-8.8 Strip Blade Upper	32081	0.3465	8.8	-
C377V-8.8 Strip Blade Lower	32080			
C377V-8.9 Strip Blade Upper	40000	0.3504	8.9	-
C377V-8.9 Strip Blade Lower	39999			
C377V-9.0 Strip Blade Upper	24680	0.3543	9.0	-
C377V-9.0 Strip Blade Lower	24679			
C377V-9.1 Strip Blade Upper	24154	0.3583	9.1	-
C377V-9.1 Strip Blade Lower	24153			
C377V-9.2 Strip Blade Upper	40002	0.3622	9.2	-
C377V-9.2 Strip Blade Lower	40001			
C377V-9.3 Strip Blade Upper	40004	0.3661	9.3	-
C377V-9.3 Strip Blade Lower	40003			
C377V-9.4 Strip Blade Upper	33925	0.3701	9.4	-
C377V-9.4 Strip Blade Lower	33924			
C377V-9.5 Strip Blade Upper	40006	0.3740	9.5	-
C377V-9.5 Strip Blade Lower	40005			
C377V-9.6 Strip Blade Upper	33927	0.3780	9.6	-
C377V-9.6 Strip Blade Lower	33926			
C377V-9.7 Strip Blade Upper	40008	0.3819	9.7	-
C377V-9.7 Strip Blade Lower	40007			
C377V-9.8 Strip Blade Upper	24269	0.3858	9.8	-
C377V-9.8 Strip Blade Lower	24268			
C377V-9.9 Strip Blade Upper	40010	0.3898	9.9	-
C377V-9.9 Strip Blade Lower	40009			
C377V-10.0 Strip Blade Upper	24459	0.3937	10.0	-
C377V-10.0 Strip Blade Lower	24458			
C377V-10.1 Strip Blade Upper	40012	0.3976	10.1	-
C377V-10.1 Strip Blade Lower	40011			
C377V-10.2 Strip Blade Upper	22180	0.4016	10.2	-
C377V-10.2 Strip Blade Lower	22181			
C377V-10.3 Strip Blade Upper	40014	0.4055	10.3	-
C377V-10.3 Strip Blade Lower	40013			
C377V-10.4 Strip Blade Upper	40016	0.4094	10.4	-
C377V-10.4 Strip Blade Lower	40015			
C377V-10.5 Strip Blade Upper	24152	0.4134	10.5	-
C377V-10.5 Strip Blade Lower	24151			
C377V-10.6 Strip Blade Upper	24678	0.4173	10.6	-
C377V-10.6 Strip Blade Lower	24678			
C377V-10.7 Strip Blade Upper	40018	0.4213	10.7	-
C377V-10.7 Strip Blade Lower	40017			
C377V-10.8 Strip Blade Upper	40020	0.4252	10.8	-
C377V-10.8 Strip Blade Lower	40019			

Continued on Next Page

C377 Series Blades

Used in the following *Kodera* machines:

Casting C377



Casting C377 V-Types Blades (continued)

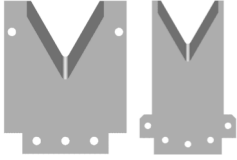
Mechtrix Description	Mechtrix Part Number	Blade Form Diameter		OEM Part Number
		(in)	(mm)	
C377V-10.9 Strip Blade Upper	25551	0.4291	10.9	-
C377V-10.9 Strip Blade Lower	25550			
C377V-11.0 Strip Blade Upper	40022	0.4331	11.0	-
C377V-11.0 Strip Blade Lower	40021			
C377V-11.1 Strip Blade Upper	40024	0.4370	11.1	-
C377V-11.1 Strip Blade Lower	40023			
C377V-11.2 Strip Blade Upper	25482	0.4409	11.2	-
C377V-11.2 Strip Blade Lower	25481			
C377V-11.3 Strip Blade Upper	40026	0.4449	11.3	-
C377V-11.3 Strip Blade Lower	40025			
C377V-11.4 Strip Blade Upper	40028	0.4488	11.4	-
C377V-11.4 Strip Blade Lower	40027			
C377V-11.5 Strip Blade Upper	40030	0.4528	11.5	-
C377V-11.5 Strip Blade Lower	40029			
C377V-11.6 Strip Blade Upper	40032	0.4567	11.6	-
C377V-11.6 Strip Blade Lower	40031			
C377V-11.7 Strip Blade Upper	40034	0.4606	11.7	-
C377V-11.7 Strip Blade Lower	40033			
C377V-11.8 Strip Blade Upper	40036	0.4646	11.8	-
C377V-11.8 Strip Blade Lower	40035			
C377V-11.9 Strip Blade Upper	40038	0.4685	11.9	-
C377V-11.9 Strip Blade Lower	40037			
C377V-12.0 Strip Blade Upper	24878	0.4724	12.0	-
C377V-12.0 Strip Blade Lower	24877			
C377V-12.1 Strip Blade Upper	40040	0.4764	12.1	-
C377V-12.1 Strip Blade Lower	40039			
C377V-12.2 Strip Blade Upper	40042	0.4803	12.2	-
C377V-12.2 Strip Blade Lower	40041			
C377V-12.3 Strip Blade Upper	40044	0.4843	12.3	-
C377V-12.3 Strip Blade Lower	40043			
C377V-12.4 Strip Blade Upper	40046	0.4882	12.4	-
C377V-12.4 Strip Blade Lower	40045			
C377V-12.5 Strip Blade Upper	22182	0.4921	12.5	-
C377V-12.5 Strip Blade Lower	22183			
C377V-12.6 Strip Blade Upper	40048	0.4961	12.6	-
C377V-12.6 Strip Blade Lower	40047			
C377V-12.7 Strip Blade Upper	40050	0.5000	12.7	-
C377V-12.7 Strip Blade Lower	40049			
C377V-12.8 Strip Blade Upper	40052	0.5039	12.8	-
C377V-12.8 Strip Blade Lower	40051			
C377V-12.9 Strip Blade Upper	40054	0.5079	12.9	-
C377V-12.9 Strip Blade Lower	40053			
C377V-13.0 Strip Blade Upper	23860	0.5118	13.0	-
C377V-13.0 Strip Blade Lower	23861			

Continued on Next Page

C377 Series Blades

Used in the following *Kodera* machines:

Casting C377



Casting C377 V-Types Blades (continued)

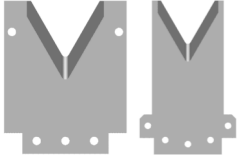
Mechtrix Description	Mechtrix Part Number	Blade Form Diameter		OEM Part Number
		(in)	(mm)	
C377V-13.1 Strip Blade Upper	40056	0.5157	13.1	-
C377V-13.1 Strip Blade Lower	40055			
C377V-13.2 Strip Blade Upper	24686	0.5197	13.2	-
C377V-13.2 Strip Blade Lower	24685			
C377V-13.3 Strip Blade Upper	24872	0.5236	13.3	-
C377V-13.3 Strip Blade Lower	24871			
C377V-13.4 Strip Blade Upper	40058	0.5276	13.4	-
C377V-13.4 Strip Blade Lower	40057			
C377V-13.5 Strip Blade Upper	24876	0.5315	13.5	-
C377V-13.5 Strip Blade Lower	24875			
C377V-13.6 Strip Blade Upper	40060	0.5354	13.6	-
C377V-13.6 Strip Blade Lower	40059			
C377V-13.7 Strip Blade Upper	40062	0.5394	13.7	-
C377V-13.7 Strip Blade Lower	40061			
C377V-13.8 Strip Blade Upper	24874	0.5433	13.8	-
C377V-13.8 Strip Blade Lower	24874			
C377V-13.9 Strip Blade Upper	40064	0.5472	13.9	-
C377V-13.9 Strip Blade Lower	40063			
C377V-14.0 Strip Blade Upper	40066	0.5512	14.0	-
C377V-14.0 Strip Blade Lower	40065			
C377V-14.1 Strip Blade Upper	28129	0.5551	14.1	-
C377V-14.1 Strip Blade Lower	28128			
C377V-14.2 Strip Blade Upper	40068	0.5591	14.2	-
C377V-14.2 Strip Blade Lower	40067			
C377V-14.3 Strip Blade Upper	40070	0.5630	14.3	-
C377V-14.3 Strip Blade Lower	40069			
C377V-14.4 Strip Blade Upper	40072	0.5669	14.4	-
C377V-14.4 Strip Blade Lower	40071			
C377V-14.5 Strip Blade Upper	23858	0.5709	14.5	-
C377V-14.5 Strip Blade Lower	23859			
C377V-14.6 Strip Blade Upper	40074	0.5748	14.6	-
C377V-14.6 Strip Blade Lower	40073			
C377V-14.7 Strip Blade Upper	40076	0.5787	14.7	-
C377V-14.7 Strip Blade Lower	40075			
C377V-14.8 Strip Blade Upper	40078	0.5827	14.8	-
C377V-14.8 Strip Blade Lower	40077			
C377V-14.9 Strip Blade Upper	40080	0.5866	14.9	-
C377V-14.9 Strip Blade Lower	40079			
C377V-15.0 Strip Blade Upper	40082	0.5906	15.0	-
C377V-15.0 Strip Blade Lower	40081			
C377V-15.1 Strip Blade Upper	27261	0.5945	15.1	-
C377V-15.1 Strip Blade Lower	27260			
C377V-15.2 Strip Blade Upper	40084	0.5984	15.2	-
C377V-15.2 Strip Blade Lower	40083			

Continued on Next Page

C377 Series Blades

Used in the following *Kodera* machines:

Casting C377



Casting C377 V-Types Blades (continued)

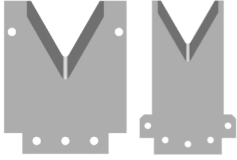
Mechtrix Description	Mechtrix Part Number	Blade Form (in)	Diameter (mm)	OEM Part Number
C377V-15.3 Strip Blade Upper	40086	0.6024	15.3	-
C377V-15.3 Strip Blade Lower	40085			
C377V-15.4 Strip Blade Upper	40088	0.6063	15.4	-
C377V-15.4 Strip Blade Lower	40087			
C377V-15.5 Strip Blade Upper	40090	0.6102	15.5	-
C377V-15.5 Strip Blade Lower	40089			
C377V-15.6 Strip Blade Upper	24682	0.6142	15.6	-
C377V-15.6 Strip Blade Lower	24681			
C377V-15.7 Strip Blade Upper	40092	0.6181	15.7	-
C377V-15.7 Strip Blade Lower	40091			
C377V-15.8 Strip Blade Upper	40094	0.6220	15.8	-
C377V-15.8 Strip Blade Lower	40093			
C377V-15.9 Strip Blade Upper	40096	0.6260	15.9	-
C377V-15.9 Strip Blade Lower	40095			
C377V-16.0 Strip Blade Upper	40098	0.6299	16.0	-
C377V-16.0 Strip Blade Lower	40097			
C377V-16.1 Strip Blade Upper	40100	0.6339	16.1	-
C377V-16.1 Strip Blade Lower	40099			
C377V-16.2 Strip Blade Upper	40102	0.6378	16.2	-
C377V-16.2 Strip Blade Lower	40101			
C377V-16.3 Strip Blade Upper	40104	0.6417	16.3	-
C377V-16.3 Strip Blade Lower	40103			
C377V-16.4 Strip Blade Upper	40106	0.6457	16.4	-
C377V-16.4 Strip Blade Lower	40105			
C377V-16.5 Strip Blade Upper	40108	0.6496	16.5	-
C377V-16.5 Strip Blade Lower	40107			
C377V-16.6 Strip Blade Upper	40110	0.6535	16.6	-
C377V-16.6 Strip Blade Lower	40109			
C377V-16.7 Strip Blade Upper	40112	0.6575	16.7	-
C377V-16.7 Strip Blade Lower	40111			
C377V-16.8 Strip Blade Upper	40114	0.6614	16.8	-
C377V-16.8 Strip Blade Lower	40113			
C377V-16.9 Strip Blade Upper	40116	0.6654	16.9	-
C377V-16.9 Strip Blade Lower	40115			
C377V-17.0 Strip Blade Upper	40118	0.6693	17.0	-
C377V-17.0 Strip Blade Lower	40117			
C377V-17.1 Strip Blade Upper	40120	0.6732	17.1	-
C377V-17.1 Strip Blade Lower	40119			
C377V-17.2 Strip Blade Upper	40122	0.6772	17.2	-
C377V-17.2 Strip Blade Lower	40121			
C377V-17.3 Strip Blade Upper	40124	0.6811	17.3	-
C377V-17.3 Strip Blade Lower	40123			
C377V-17.4 Strip Blade Upper	40126	0.6850	17.4	-
C377V-17.4 Strip Blade Lower	40125			

Continued on Next Page

C377 Series Blades

Used in the following *Kodera* machines:

Casting C377



Casting C377 V-Types Blades (continued)

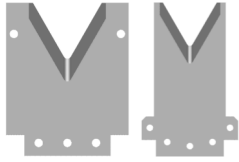
Mechtrix Description	Mechtrix	Blade Form Diameter		OEM
	Part Number	(in)	(mm)	Part Number
C377V-17.5 Strip Blade Upper	40128	0.6890	17.5	-
C377V-17.5 Strip Blade Lower	40127			
C377V-17.6 Strip Blade Upper	40130	0.6929	17.6	-
C377V-17.6 Strip Blade Lower	40129			
C377V-17.7 Strip Blade Upper	40132	0.6969	17.7	-
C377V-17.7 Strip Blade Lower	40131			
C377V-17.8 Strip Blade Upper	40134	0.7008	17.8	-
C377V-17.8 Strip Blade Lower	40133			
C377V-17.9 Strip Blade Upper	40136	0.7047	17.9	-
C377V-17.9 Strip Blade Lower	40135			
C377V-18.0 Strip Blade Upper	40138	0.7087	18.0	-
C377V-18.0 Strip Blade Lower	40137			
C377V-18.1 Strip Blade Upper	40140	0.7126	18.1	-
C377V-18.1 Strip Blade Lower	40139			
C377V-18.2 Strip Blade Upper	40142	0.7165	18.2	-
C377V-18.2 Strip Blade Lower	40141			
C377V-18.3 Strip Blade Upper	40144	0.7205	18.3	-
C377V-18.3 Strip Blade Lower	40143			
C377V-18.4 Strip Blade Upper	40146	0.7244	18.4	-
C377V-18.4 Strip Blade Lower	40145			
C377V-18.5 Strip Blade Upper	40148	0.7283	18.5	-
C377V-18.5 Strip Blade Lower	40147			
C377V-18.6 Strip Blade Upper	40150	0.7323	18.6	-
C377V-18.6 Strip Blade Lower	40149			
C377V-18.7 Strip Blade Upper	40152	0.7362	18.7	-
C377V-18.7 Strip Blade Lower	40151			
C377V-18.8 Strip Blade Upper	40154	0.7402	18.8	-
C377V-18.8 Strip Blade Lower	40153			
C377V-18.9 Strip Blade Upper	40156	0.7441	18.9	-
C377V-18.9 Strip Blade Lower	40155			
C377V-19.0 Strip Blade Upper	40158	0.7480	19.0	-
C377V-19.0 Strip Blade Lower	40157			
C377V-19.1 Strip Blade Upper	40160	0.7520	19.1	-
C377V-19.1 Strip Blade Lower	40159			
C377V-19.2 Strip Blade Upper	40162	0.7559	19.2	-
C377V-19.2 Strip Blade Lower	40161			
C377V-19.3 Strip Blade Upper	40164	0.7598	19.3	-
C377V-19.3 Strip Blade Lower	40163			
C377V-19.4 Strip Blade Upper	40166	0.7638	19.4	-
C377V-19.4 Strip Blade Lower	40165			
C377V-19.5 Strip Blade Upper	40168	0.7677	19.5	-
C377V-19.5 Strip Blade Lower	40167			
C377V-19.6 Strip Blade Upper	40170	0.7717	19.6	-
C377V-19.6 Strip Blade Lower	40169			

Continued on Next Page

C377 Series Blades

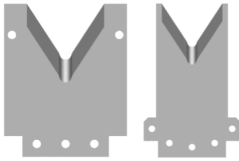
Used in the following *Kodera* machines:

Casting C377



Casting C377 V-Types Blades (continued)

Mechtrix Description	Mechtrix Part Number	Blade Form Diameter		OEM Part Number
		(in)	(mm)	
C377V-19.7 Strip Blade Upper	40172	0.7756	19.7	-
C377V-19.7 Strip Blade Lower	40171			
C377V-19.8 Strip Blade Upper	40174	0.7795	19.8	-
C377V-19.8 Strip Blade Lower	40173			
C377V-19.9 Strip Blade Upper	40176	0.7835	19.9	-
C377V-19.9 Strip Blade Lower	40175			
C377V-20.0 Strip Blade Upper	40178	0.7874	20.0	-
C377V-20.0 Strip Blade Lower	40177			



Casting C377 M-Series® Blades

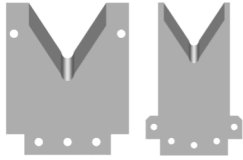
Mechtrix Description	Mechtrix Part Number	Blade Form Diameter		OEM Part Number
		(in)	(mm)	
C377M-0.3 Strip Blade Upper	40194	0.0118	0.3	-
C377M-0.3 Strip Blade Lower	40193			
C377M-0.4 Strip Blade Upper	40196	0.0158	0.4	-
C377M-0.4 Strip Blade Lower	40195			
C377M-0.5 Strip Blade Upper	40198	0.0197	0.5	-
C377M-0.5 Strip Blade Lower	40197			
C377M-0.6 Strip Blade Upper	40200	0.0236	0.6	-
C377M-0.6 Strip Blade Lower	40199			
C377M-0.7 Strip Blade Upper	40202	0.0276	0.7	-
C377M-0.7 Strip Blade Lower	40201			
C377M-0.8 Strip Blade Upper	40204	0.0315	0.8	-
C377M-0.8 Strip Blade Lower	40203			
C377M-0.9 Strip Blade Upper	40206	0.0354	0.9	-
C377M-0.9 Strip Blade Lower	40205			
C377M-1.0 Strip Blade Upper	40208	0.0394	1.0	-
C377M-1.0 Strip Blade Lower	40207			
C377M-1.1 Strip Blade Upper	40210	0.0433	1.1	-
C377M-1.1 Strip Blade Lower	40209			
C377M-1.2 Strip Blade Upper	40212	0.0472	1.2	-
C377M-1.2 Strip Blade Lower	40211			
C377M-1.3 Strip Blade Upper	40214	0.0512	1.3	-
C377M-1.3 Strip Blade Lower	40213			
C377M-1.4 Strip Blade Upper	40216	0.0551	1.4	-
C377M-1.4 Strip Blade Lower	40215			
C377M-1.5 Strip Blade Upper	40218	0.0591	1.5	-
C377M-1.5 Strip Blade Lower	40217			
C377M-1.6 Strip Blade Upper	40220	0.0630	1.6	-
C377M-1.6 Strip Blade Lower	40219			
C377M-1.7 Strip Blade Upper	40222	0.0669	1.7	-
C377M-1.7 Strip Blade Lower	40221			

Continued on Next Page

C377 Series Blades

Used in the following *Kodera* machines:

Casting C377



Casting C377 M-Series® Blades (continued)

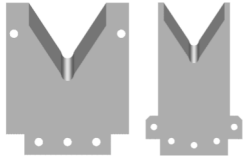
Mechtrix Description	Mechtrix Part Number	Blade Form Diameter (in)	Diameter (mm)	OEM Part Number
C377M-1.8 Strip Blade Upper	40224	0.0709	1.8	-
C377M-1.8 Strip Blade Lower	40223			
C377M-1.9 Strip Blade Upper	40226	0.0748	1.9	-
C377M-1.9 Strip Blade Lower	40225			
C377M-2.0 Strip Blade Upper	40228	0.0787	2.0	-
C377M-2.0 Strip Blade Lower	40227			
C377M-2.1 Strip Blade Upper	40230	0.0827	2.1	-
C377M-2.1 Strip Blade Lower	40229			
C377M-2.2 Strip Blade Upper	40232	0.0866	2.2	-
C377M-2.2 Strip Blade Lower	40231			
C377M-2.3 Strip Blade Upper	40234	0.0906	2.3	-
C377M-2.3 Strip Blade Lower	40233			
C377M-2.4 Strip Blade Upper	40236	0.0945	2.4	-
C377M-2.4 Strip Blade Lower	40235			
C377M-2.5 Strip Blade Upper	40238	0.0984	2.5	-
C377M-2.5 Strip Blade Lower	40237			
C377M-2.6 Strip Blade Upper	40240	0.1024	2.6	-
C377M-2.6 Strip Blade Lower	40239			
C377M-2.7 Strip Blade Upper	40242	0.1063	2.7	-
C377M-2.7 Strip Blade Lower	40241			
C377M-2.8 Strip Blade Upper	40244	0.1102	2.8	-
C377M-2.8 Strip Blade Lower	40243			
C377M-2.9 Strip Blade Upper	40246	0.1142	2.9	-
C377M-2.9 Strip Blade Lower	40245			
C377M-3.0 Strip Blade Upper	40248	0.1181	3.0	-
C377M-3.0 Strip Blade Lower	40247			
C377M-3.1 Strip Blade Upper	40250	0.1221	3.1	-
C377M-3.1 Strip Blade Lower	40249			
C377M-3.2 Strip Blade Upper	40252	0.1260	3.2	-
C377M-3.2 Strip Blade Lower	40251			
C377M-3.3 Strip Blade Upper	40254	0.1299	3.3	-
C377M-3.3 Strip Blade Lower	40253			
C377M-3.4 Strip Blade Upper	40256	0.1339	3.4	-
C377M-3.4 Strip Blade Lower	40255			
C377M-3.5 Strip Blade Upper	40258	0.1378	3.5	-
C377M-3.5 Strip Blade Lower	40257			
C377M-3.6 Strip Blade Upper	40260	0.1417	3.6	-
C377M-3.6 Strip Blade Lower	40259			
C377M-3.7 Strip Blade Upper	40262	0.1457	3.7	-
C377M-3.7 Strip Blade Lower	40261			
C377M-3.8 Strip Blade Upper	40264	0.1496	3.8	-
C377M-3.8 Strip Blade Lower	40263			
C377M-3.9 Strip Blade Upper	40266	0.1535	3.9	-
C377M-3.9 Strip Blade Lower	40265			
C377M-4.0 Strip Blade Upper	40268	0.1575	4.0	-
C377M-4.0 Strip Blade Lower	40267			

Continued on Next Page

C377 Series Blades

Used in the following *Kodera* machines:

Casting C377



Casting C377 M-Series® Blades (continued)

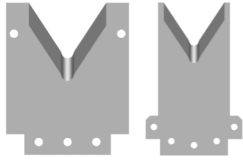
Mechtrix Description	Mechtrix Part Number	Blade Form Diameter		OEM Part Number
		(in)	(mm)	
C377M-4.1 Strip Blade Upper	34983	0.1614	4.1	-
C377M-4.1 Strip Blade Lower	34982			
C377M-4.2 Strip Blade Upper	31528	0.1654	4.2	-
C377M-4.2 Strip Blade Lower	31527			
C377M-4.3 Strip Blade Upper	40270	0.1693	4.3	-
C377M-4.3 Strip Blade Lower	40269			
C377M-4.4 Strip Blade Upper	40272	0.1732	4.4	-
C377M-4.4 Strip Blade Lower	40271			
C377M-4.5 Strip Blade Upper	35436	0.1772	4.5	-
C377M-4.5 Strip Blade Lower	35435			
C377M-4.6 Strip Blade Upper	31161	0.1811	4.6	-
C377M-4.6 Strip Blade Lower	31160			
C377M-4.7 Strip Blade Upper	34985	0.1850	4.7	-
C377M-4.7 Strip Blade Lower	34984			
C377M-4.8 Strip Blade Upper	40274	0.1890	4.8	-
C377M-4.8 Strip Blade Lower	40273			
C377M-4.9 Strip Blade Upper	40276	0.1929	4.9	-
C377M-4.9 Strip Blade Lower	40275			
C377M-5.0 Strip Blade Upper	35553	0.1969	5.0	-
C377M-5.0 Strip Blade Lower	35552			
C377M-5.1 Strip Blade Upper	33424	0.2008	5.1	-
C377M-5.1 Strip Blade Lower	33423			
C377M-5.2 Strip Blade Upper	40278	0.2047	5.2	-
C377M-5.2 Strip Blade Lower	40277			
C377M-5.3 Strip Blade Upper	40280	0.2087	5.3	-
C377M-5.3 Strip Blade Lower	40279			
C377M-5.4 Strip Blade Upper	30353	0.2126	5.4	-
C377M-5.4 Strip Blade Lower	30352			
C377M-5.5 Strip Blade Upper	40282	0.2165	5.5	-
C377M-5.5 Strip Blade Lower	40281			
C377M-5.6 Strip Blade Upper	31530	0.2205	5.6	-
C377M-5.6 Strip Blade Lower	31529			
C377M-5.7 Strip Blade Upper	34987	0.2244	5.7	-
C377M-5.7 Strip Blade Lower	34986			
C377M-5.8 Strip Blade Upper	28068	0.2284	5.8	-
C377M-5.8 Strip Blade Lower	28067			
C377M-5.9 Strip Blade Upper	29037	0.2323	5.9	-
C377M-5.9 Strip Blade Lower	29036			
C377M-6.0 Strip Blade Upper	40284	0.2362	6.0	-
C377M-6.0 Strip Blade Lower	40283			
C377M-6.1 Strip Blade Upper	40286	0.2402	6.1	-
C377M-6.1 Strip Blade Lower	40285			
C377M-6.2 Strip Blade Upper	35614	0.2441	6.2	-
C377M-6.2 Strip Blade Lower	35613			
C377M-6.3 Strip Blade Upper	40288	0.2480	6.3	-
C377M-6.3 Strip Blade Lower	40287			

Continued on Next Page

C377 Series Blades

Used in the following *Kodera* machines:

Casting C377



Casting C377 M-Series® Blades (continued)

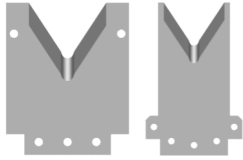
Mechtrix Description	Mechtrix Part Number	Blade Form Diameter (in)	Diameter (mm)	OEM Part Number
C377M-6.4 Strip Blade Upper	40290	0.2520	6.4	-
C377M-6.4 Strip Blade Lower	40289			
C377M-6.5 Strip Blade Upper	29024	0.2559	6.5	-
C377M-6.5 Strip Blade Lower	29023			
C377M-6.6 Strip Blade Upper	40292	0.2598	6.6	-
C377M-6.6 Strip Blade Lower	40291			
C377M-6.7 Strip Blade Upper	40294	0.2638	6.7	-
C377M-6.7 Strip Blade Lower	40293			
C377M-6.8 Strip Blade Upper	35640	0.2677	6.8	-
C377M-6.8 Strip Blade Lower	35639			
C377M-6.9 Strip Blade Upper	35616	0.2717	6.9	-
C377M-6.9 Strip Blade Lower	35615			
C377M-7.0 Strip Blade Upper	30294	0.2756	7.0	-
C377M-7.0 Strip Blade Lower	30293			
C377M-7.1 Strip Blade Upper	40296	0.2795	7.1	-
C377M-7.1 Strip Blade Lower	40295			
C377M-7.2 Strip Blade Upper	36234	0.2835	7.2	-
C377M-7.2 Strip Blade Lower	36233			
C377M-7.3 Strip Blade Upper	40298	0.2874	7.3	-
C377M-7.3 Strip Blade Lower	40297			
C377M-7.4 Strip Blade Upper	40300	0.2913	7.4	-
C377M-7.4 Strip Blade Lower	40299			
C377M-7.5 Strip Blade Upper	35425	0.2953	7.5	-
C377M-7.5 Strip Blade Lower	35424			
C377M-7.6 Strip Blade Upper	40302	0.2992	7.6	-
C377M-7.6 Strip Blade Lower	40301			
C377M-7.7 Strip Blade Upper	34944	0.3032	7.7	-
C377M-7.7 Strip Blade Lower	34943			
C377M-7.8 Strip Blade Upper	40304	0.3071	7.8	-
C377M-7.8 Strip Blade Lower	40303			
C377M-7.9 Strip Blade Upper	40306	0.3110	7.9	-
C377M-7.9 Strip Blade Lower	40305			
C377M-8.0 Strip Blade Upper	30011	0.3150	8.0	-
C377M-8.0 Strip Blade Lower	30010			
C377M-8.1 Strip Blade Upper	40308	0.3189	8.1	-
C377M-8.1 Strip Blade Lower	40307			
C377M-8.2 Strip Blade Upper	33713	0.3228	8.2	-
C377M-8.2 Strip Blade Lower	33712			
C377M-8.3 Strip Blade Upper	40310	0.3268	8.3	-
C377M-8.3 Strip Blade Lower	40309			
C377M-8.4 Strip Blade Upper	40312	0.3307	8.4	-
C377M-8.4 Strip Blade Lower	40311			
C377M-8.5 Strip Blade Upper	40314	0.3346	8.5	-
C377M-8.5 Strip Blade Lower	40313			
C377M-8.6 Strip Blade Upper	40316	0.3386	8.6	-
C377M-8.6 Strip Blade Lower	40315			

Continued on Next Page

C377 Series Blades

Used in the following *Kodera* machines:

Casting C377



Casting C377 M-Series® Blades (continued)

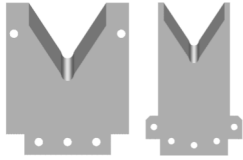
Mechtrix Description	Mechtrix Part Number	Blade Form Diameter (in)	Blade Form Diameter (mm)	OEM Part Number
C377M-8.7 Strip Blade Upper	40318	0.3425	8.7	-
C377M-8.7 Strip Blade Lower	40317			
C377M-8.8 Strip Blade Upper	40320	0.3465	8.8	-
C377M-8.8 Strip Blade Lower	40319			
C377M-8.9 Strip Blade Upper	29039	0.3504	8.9	-
C377M-8.9 Strip Blade Lower	29038			
C377M-9.0 Strip Blade Upper	40322	0.3543	9.0	-
C377M-9.0 Strip Blade Lower	40321			
C377M-9.1 Strip Blade Upper	40324	0.3583	9.1	-
C377M-9.1 Strip Blade Lower	40323			
C377M-9.2 Strip Blade Upper	33012	0.3622	9.2	-
C377M-9.2 Strip Blade Lower	33011			
C377M-9.3 Strip Blade Upper	40326	0.3661	9.3	-
C377M-9.3 Strip Blade Lower	40325			
C377M-9.4 Strip Blade Upper	40328	0.3701	9.4	-
C377M-9.4 Strip Blade Lower	40327			
C377M-9.5 Strip Blade Upper	33469	0.3740	9.5	-
C377M-9.5 Strip Blade Lower	33468			
C377M-9.6 Strip Blade Upper	40330	0.3780	9.6	-
C377M-9.6 Strip Blade Lower	40329			
C377M-9.7 Strip Blade Upper	40332	0.3819	9.7	-
C377M-9.7 Strip Blade Lower	40331			
C377M-9.8 Strip Blade Upper	40334	0.3858	9.8	-
C377M-9.8 Strip Blade Lower	40333			
C377M-9.9 Strip Blade Upper	40336	0.3898	9.9	-
C377M-9.9 Strip Blade Lower	40335			
C377M-10.0 Strip Blade Upper	32474	0.3937	10.0	-
C377M-10.0 Strip Blade Lower	32473			
C377M-10.1 Strip Blade Upper	35160	0.3976	10.1	-
C377M-10.1 Strip Blade Lower	35159			
C377M-10.2 Strip Blade Upper	28589	0.4016	10.2	-
C377M-10.2 Strip Blade Lower	28588			
C377M-10.3 Strip Blade Upper	35642	0.4055	10.3	-
C377M-10.3 Strip Blade Lower	35641			
C377M-10.4 Strip Blade Upper	40338	0.4094	10.4	-
C377M-10.4 Strip Blade Lower	40337			
C377M-10.5 Strip Blade Upper	28161	0.4134	10.5	-
C377M-10.5 Strip Blade Lower	28160			
C377M-10.6 Strip Blade Upper	40340	0.4173	10.6	-
C377M-10.6 Strip Blade Lower	40339			
C377M-10.7 Strip Blade Upper	34946	0.4213	10.7	-
C377M-10.7 Strip Blade Lower	34945			
C377M-10.8 Strip Blade Upper	40342	0.4252	10.8	-
C377M-10.8 Strip Blade Lower	40341			

Continued on Next Page

C377 Series Blades

Used in the following *Kodera* machines:

Casting C377



Casting C377 M-Series® Blades (continued)

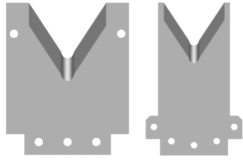
Mechtrix Description	Mechtrix Part Number	Blade Form (in)	Diameter (mm)	OEM Part Number
C377M-10.9 Strip Blade Upper	40344	0.4291	10.9	-
C377M-10.9 Strip Blade Lower	40343			
C377M-11.0 Strip Blade Upper	30194	0.4331	11.0	-
C377M-11.0 Strip Blade Lower	30193			
C377M-11.1 Strip Blade Upper	40346	0.4370	11.1	-
C377M-11.1 Strip Blade Lower	40345			
C377M-11.2 Strip Blade Upper	40348	0.4409	11.2	-
C377M-11.2 Strip Blade Lower	40347			
C377M-11.3 Strip Blade Upper	40350	0.4449	11.3	-
C377M-11.3 Strip Blade Lower	40349			
C377M-11.4 Strip Blade Upper	40352	0.4488	11.4	-
C377M-11.4 Strip Blade Lower	40351			
C377M-11.5 Strip Blade Upper	35620	0.4528	11.5	-
C377M-11.5 Strip Blade Lower	35619			
C377M-11.6 Strip Blade Upper	40354	0.4567	11.6	-
C377M-11.6 Strip Blade Lower	40353			
C377M-11.7 Strip Blade Upper	40356	0.4606	11.7	-
C377M-11.7 Strip Blade Lower	40355			
C377M-11.8 Strip Blade Upper	40358	0.4646	11.8	-
C377M-11.8 Strip Blade Lower	40357			
C377M-11.9 Strip Blade Upper	40360	0.4685	11.9	-
C377M-11.9 Strip Blade Lower	40359			
C377M-12.0 Strip Blade Upper	40362	0.4724	12.0	-
C377M-12.0 Strip Blade Lower	40361			
C377M-12.1 Strip Blade Upper	40364	0.4764	12.1	-
C377M-12.1 Strip Blade Lower	40363			
C377M-12.2 Strip Blade Upper	40366	0.4803	12.2	-
C377M-12.2 Strip Blade Lower	40365			
C377M-12.3 Strip Blade Upper	40368	0.4843	12.3	-
C377M-12.3 Strip Blade Lower	40367			
C377M-12.4 Strip Blade Upper	40370	0.4882	12.4	-
C377M-12.4 Strip Blade Lower	40369			
C377M-12.5 Strip Blade Upper	35644	0.4921	12.5	-
C377M-12.5 Strip Blade Lower	35643			
C377M-12.6 Strip Blade Upper	40372	0.4961	12.6	-
C377M-12.6 Strip Blade Lower	40371			
C377M-12.7 Strip Blade Upper	40374	0.5000	12.7	-
C377M-12.7 Strip Blade Lower	40373			
C377M-12.8 Strip Blade Upper	29026	0.5039	12.8	-
C377M-12.8 Strip Blade Lower	29025			
C377M-12.9 Strip Blade Upper	40376	0.5079	12.9	-
C377M-12.9 Strip Blade Lower	40375			
C377M-13.0 Strip Blade Upper	35622	0.5118	13.0	-
C377M-13.0 Strip Blade Lower	35621			

Continued on Next Page

C377 Series Blades

Used in the following *Kodera* machines:

Casting C377



Casting C377 M-Series® Blades (continued)

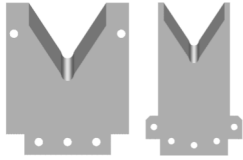
Mechtrix Description	Mechtrix Part Number	Blade Form (in)	Diameter (mm)	OEM Part Number
C377M-13.1 Strip Blade Upper	35162	0.5157	13.1	-
C377M-13.1 Strip Blade Lower	35161			
C377M-13.2 Strip Blade Upper	40378	0.5197	13.2	-
C377M-13.2 Strip Blade Lower	40377			
C377M-13.3 Strip Blade Upper	40380	0.5236	13.3	-
C377M-13.3 Strip Blade Lower	40379			
C377M-13.4 Strip Blade Upper	35646	0.5276	13.4	-
C377M-13.4 Strip Blade Lower	35645			
C377M-13.5 Strip Blade Upper	40382	0.5315	13.5	-
C377M-13.5 Strip Blade Lower	40381			
C377M-13.6 Strip Blade Upper	40384	0.5354	13.6	-
C377M-13.6 Strip Blade Lower	40383			
C377M-13.7 Strip Blade Upper	40386	0.5394	13.7	-
C377M-13.7 Strip Blade Lower	40385			
C377M-13.8 Strip Blade Upper	40388	0.5433	13.8	-
C377M-13.8 Strip Blade Lower	40387			
C377M-13.9 Strip Blade Upper	40390	0.5472	13.9	-
C377M-13.9 Strip Blade Lower	40389			
C377M-14.0 Strip Blade Upper	40392	0.5512	14.0	-
C377M-14.0 Strip Blade Lower	40391			
C377M-14.1 Strip Blade Upper	40394	0.5551	14.1	-
C377M-14.1 Strip Blade Lower	40393			
C377M-14.2 Strip Blade Upper	40396	0.5591	14.2	-
C377M-14.2 Strip Blade Lower	40395			
C377M-14.3 Strip Blade Upper	40938	0.5630	14.3	-
C377M-14.3 Strip Blade Lower	40937			
C377M-14.4 Strip Blade Upper	40400	0.5669	14.4	-
C377M-14.4 Strip Blade Lower	40399			
C377M-14.5 Strip Blade Upper	40402	0.5709	14.5	-
C377M-14.5 Strip Blade Lower	40401			
C377M-14.6 Strip Blade Upper	40404	0.5748	14.6	-
C377M-14.6 Strip Blade Lower	40403			
C377M-14.7 Strip Blade Upper	30013	0.5787	14.7	-
C377M-14.7 Strip Blade Lower	30012			
C377M-14.8 Strip Blade Upper	40406	0.5827	14.8	-
C377M-14.8 Strip Blade Lower	40405			
C377M-14.9 Strip Blade Upper	40408	0.5866	14.9	-
C377M-14.9 Strip Blade Lower	40407			
C377M-15.0 Strip Blade Upper	40410	0.5906	15.0	-
C377M-15.0 Strip Blade Lower	40409			
C377M-15.1 Strip Blade Upper	40412	0.5945	15.1	-
C377M-15.1 Strip Blade Lower	40411			
C377M-15.2 Strip Blade Upper	40414	0.5984	15.2	-
C377M-15.2 Strip Blade Lower	40413			

Continued on Next Page

C377 Series Blades

Used in the following *Kodera* machines:

Casting C377



Casting C377 M-Series® Blades (continued)

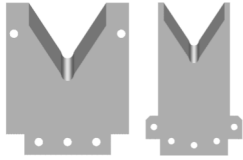
Mechtrix Description	Mechtrix	Blade Form Diameter		OEM
	Part Number	(in)	(mm)	Part Number
C377M-15.3 Strip Blade Upper	40416	0.6024	15.3	-
C377M-15.3 Strip Blade Lower	40415			
C377M-15.4 Strip Blade Upper	40418	0.6063	15.4	-
C377M-15.4 Strip Blade Lower	40417			
C377M-15.5 Strip Blade Upper	40420	0.6102	15.5	-
C377M-15.5 Strip Blade Lower	40419			
C377M-15.6 Strip Blade Upper	40422	0.6142	15.6	-
C377M-15.6 Strip Blade Lower	40421			
C377M-15.7 Strip Blade Upper	40424	0.6181	15.7	-
C377M-15.7 Strip Blade Lower	40423			
C377M-15.8 Strip Blade Upper	40426	0.6220	15.8	-
C377M-15.8 Strip Blade Lower	40425			
C377M-15.9 Strip Blade Upper	40428	0.6260	15.9	-
C377M-15.9 Strip Blade Lower	40427			
C377M-16.0 Strip Blade Upper	40430	0.6299	16.0	-
C377M-16.0 Strip Blade Lower	40429			
C377M-16.1 Strip Blade Upper	40432	0.6339	16.1	-
C377M-16.1 Strip Blade Lower	40431			
C377M-16.2 Strip Blade Upper	40434	0.6378	16.2	-
C377M-16.2 Strip Blade Lower	40433			
C377M-16.3 Strip Blade Upper	40436	0.6417	16.3	-
C377M-16.3 Strip Blade Lower	40435			
C377M-16.4 Strip Blade Upper	40438	0.6457	16.4	-
C377M-16.4 Strip Blade Lower	40437			
C377M-16.5 Strip Blade Upper	40440	0.6496	16.5	-
C377M-16.5 Strip Blade Lower	40439			
C377M-16.6 Strip Blade Upper	36512	0.6535	16.6	-
C377M-16.6 Strip Blade Lower	36511			
C377M-16.7 Strip Blade Upper	40442	0.6575	16.7	-
C377M-16.7 Strip Blade Lower	40441			
C377M-16.8 Strip Blade Upper	40444	0.6614	16.8	-
C377M-16.8 Strip Blade Lower	40443			
C377M-16.9 Strip Blade Upper	40446	0.6654	16.9	-
C377M-16.9 Strip Blade Lower	40445			
C377M-17.0 Strip Blade Upper	28301	0.6693	17.0	-
C377M-17.0 Strip Blade Lower	28300			
C377M-17.1 Strip Blade Upper	40448	0.6732	17.1	-
C377M-17.1 Strip Blade Lower	40447			
C377M-17.2 Strip Blade Upper	40450	0.6772	17.2	-
C377M-17.2 Strip Blade Lower	40449			
C377M-17.3 Strip Blade Upper	40452	0.6811	17.3	-
C377M-17.3 Strip Blade Lower	40451			
C377M-17.4 Strip Blade Upper	40454	0.6850	17.4	-
C377M-17.4 Strip Blade Lower	40453			

Continued on Next Page

C377 Series Blades

Used in the following *Kodera* machines:

Casting C377



Casting C377 M-Series® Blades (continued)

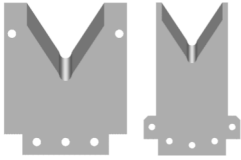
Mechtrix Description	Mechtrix Part Number	Blade Form Diameter (in)	Blade Form Diameter (mm)	OEM Part Number
C377M-17.5 Strip Blade Upper	40456	0.6890	17.5	-
C377M-17.5 Strip Blade Lower	40455			
C377M-17.6 Strip Blade Upper	40458	0.6929	17.6	-
C377M-17.6 Strip Blade Lower	40457			
C377M-17.7 Strip Blade Upper	40460	0.6969	17.7	-
C377M-17.7 Strip Blade Lower	40459			
C377M-17.8 Strip Blade Upper	40462	0.7008	17.8	-
C377M-17.8 Strip Blade Lower	40461			
C377M-17.9 Strip Blade Upper	40464	0.7047	17.9	-
C377M-17.9 Strip Blade Lower	40463			
C377M-18.0 Strip Blade Upper	40466	0.7087	18.0	-
C377M-18.0 Strip Blade Lower	40465			
C377M-18.1 Strip Blade Upper	40468	0.7126	18.1	-
C377M-18.1 Strip Blade Lower	40467			
C377M-18.2 Strip Blade Upper	40470	0.7165	18.2	-
C377M-18.2 Strip Blade Lower	40469			
C377M-18.3 Strip Blade Upper	40472	0.7205	18.3	-
C377M-18.3 Strip Blade Lower	40471			
C377M-18.4 Strip Blade Upper	40474	0.7244	18.4	-
C377M-18.4 Strip Blade Lower	40473			
C377M-18.5 Strip Blade Upper	40476	0.7283	18.5	-
C377M-18.5 Strip Blade Lower	40475			
C377M-18.6 Strip Blade Upper	40478	0.7323	18.6	-
C377M-18.6 Strip Blade Lower	40477			
C377M-18.7 Strip Blade Upper	40480	0.7362	18.7	-
C377M-18.7 Strip Blade Lower	40479			
C377M-18.8 Strip Blade Upper	40482	0.7402	18.8	-
C377M-18.8 Strip Blade Lower	40481			
C377M-18.9 Strip Blade Upper	40484	0.7441	18.9	-
C377M-18.9 Strip Blade Lower	40483			
C377M-19.0 Strip Blade Upper	40486	0.7480	19.0	-
C377M-19.0 Strip Blade Lower	40485			
C377M-19.1 Strip Blade Upper	40488	0.7520	19.1	-
C377M-19.1 Strip Blade Lower	40487			
C377M-19.2 Strip Blade Upper	40490	0.7559	19.2	-
C377M-19.2 Strip Blade Lower	40489			
C377M-19.3 Strip Blade Upper	40492	0.7598	19.3	-
C377M-19.3 Strip Blade Lower	40491			
C377M-19.4 Strip Blade Upper	40494	0.7638	19.4	-
C377M-19.4 Strip Blade Lower	40493			
C377M-19.5 Strip Blade Upper	40496	0.7677	19.5	-
C377M-19.5 Strip Blade Lower	40495			
C377M-19.6 Strip Blade Upper	40498	0.7717	19.6	-
C377M-19.6 Strip Blade Lower	40497			

Continued on Next Page

C377 Series Blades

Used in the following *Kodera* machines:

Casting C377



Casting C377 M-Series[®] Blades (continued)

Mechtrix Description	Mechtrix Part Number	Blade Form Diameter (in)	Diameter (mm)	OEM Part Number
C377M-19.7 Strip Blade Upper	40500	0.7756	19.7	-
C377M-19.7 Strip Blade Lower	40499			
C377M-19.8 Strip Blade Upper	40502	0.7795	19.8	-
C377M-19.8 Strip Blade Lower	40501			
C377M-19.9 Strip Blade Upper	40504	0.7835	19.9	-
C377M-19.9 Strip Blade Lower	40503			
C377M-20.0 Strip Blade Upper	40506	0.7874	20.0	-
C377M-20.0 Strip Blade Lower	40505			