

C353 Series Blades

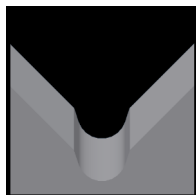
Used in the following *Kodera* machines:

Casting C353 | Casting C355 | Casting C373 | Casting C375

Available C353 Blade Form Geometries Include:



Universal



M-Series®



Full-Radius



Casting C353 Universal Blades

Mechtrix Description	Mechtrix Part Number	Blade Form Diameter		OEM Part Number
		(in)	(mm)	
K36S (S7 ₅ U) Universal-Short	11725	-	-	0030892
K36L (S7 ₅ D) Universal-Long	11726			



Casting C353 M-Series® Blades

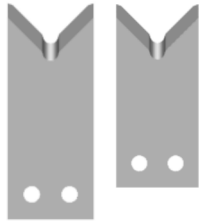
Mechtrix Description	Mechtrix Part Number	Blade Form Diameter		OEM Part Number
		(in)	(mm)	
K36M-0.3 Strip Blade Long	39433	0.0118	0.3	-
K36M-0.3 Strip Blade Short	39434	0.0118	0.3	-
K36M-0.4 Strip Blade Long	39435	0.0158	0.4	-
K36M-0.4 Strip Blade Short	39436	0.0158	0.4	-
K36M-0.5 Strip Blade Long	39437	0.0197	0.5	-
K36M-0.5 Strip Blade Short	39438	0.0197	0.5	-
K36M-0.6 Strip Blade Long	39439	0.0236	0.6	-
K36M-0.6 Strip Blade Short	39440	0.0236	0.6	-
K36M-0.7 Strip Blade Long	39441	0.0276	0.7	-
K36M-0.7 Strip Blade Short	39442	0.0276	0.1	-
K36M-0.8 Strip Blade Long	39443	0.0315	0.8	-
K36M-0.8 Strip Blade Short	39444	0.0315	0.8	-
K36M-0.9 Strip Blade Long	39445	0.0354	0.9	-
K36M-0.9 Strip Blade Short	39446	0.0354	0.9	-
K36M-1.0 Strip Blade Long	23381	0.0394	1.0	-
K36M-1.0 Strip Blade Short	23382	0.0394	1.0	-
K36M-1.1 Strip Blade Long	39447	0.0433	1.1	-
K36M-1.1 Strip Blade Short	39448	0.0433	1.1	-
K36M-1.2 Strip Blade Long	39449	0.0472	1.2	-
K36M-1.2 Strip Blade Short	39450	0.0472	1.2	-
K36M-1.3 Strip Blade Long	24716	0.0512	1.3	-
K36M-1.3 Strip Blade Short	24717	0.0512	1.3	-
K36M-1.4 Strip Blade Long	39451	0.0551	1.4	-
K36M-1.4 Strip Blade Short	39452	0.0551	1.4	-
K36M-1.5 Strip Blade Long	26212	0.0591	1.5	-
K36M-1.5 Strip Blade Short	26213	0.0591	1.5	-
K36M-1.6 Strip Blade Long	20164	0.0630	1.6	-
K36M-1.6 Strip Blade Short	20165	0.0630	1.6	-
K36M-1.7 Strip Blade Long	20374	0.0669	1.7	-
K36M-1.7 Strip Blade Short	20375	0.0699	1.7	-

Continued on Next Page

C353 Series Blades

Used in the following **Kodera** machines:

Casting C353 | Casting C355 | Casting C373 | Casting C375



Casting C353 M-Series® Blades (continued)

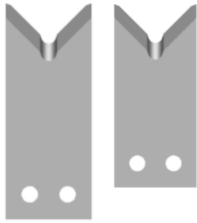
Mechtrix Description	Mechtrix Part Number	Blade Form (in)	Diameter (mm)	OEM Part Number
K36M-1.8 Strip Blade Long	33965	0.0709	1.8	-
K36M-1.8 Strip Blade Short	33966	0.0709	1.8	-
K36M-1.9 Strip Blade Long	27526	0.0748	1.9	-
K36M-1.9 Strip Blade Short	27527	0.0748	1.9	-
K36M-2.0 Strip Blade Long	20746	0.0787	2.0	-
K36M-2.0 Strip Blade Short	20747	0.0787	2.0	-
K36M-2.1 Strip Blade Long	39453	0.0827	2.1	-
K36M-2.1 Strip Blade Short	39454	0.0827	2.1	-
K36M-2.2 Strip Blade Long	39455	0.0866	2.2	-
K36M-2.2 Strip Blade Short	39456	0.0866	2.2	-
K36M-2.3 Strip Blade Long	39457	0.0906	2.3	-
K36M-2.3 Strip Blade Short	39458	0.0906	2.3	-
K36M-2.4 Strip Blade Long	20162	0.0945	2.4	-
K36M-2.4 Strip Blade Short	20163	0.0945	2.4	-
K36M-2.5 Strip Blade Long	39459	0.0984	2.5	-
K36M-2.5 Strip Blade Short	39460	0.0984	2.5	-
K36M-2.6 Strip Blade Long	39461	0.1024	2.6	-
K36M-2.6 Strip Blade Short	39462	0.1024	2.6	-
K36M-2.7 Strip Blade Long	25609	0.1063	2.7	-
K36M-2.7 Strip Blade Short	25610	0.1063	2.7	-
K36M-2.8 Strip Blade Long	15367	0.1102	2.8	-
K36M-2.8 Strip Blade Short	15368	0.1102	2.8	-
K36M-2.9 Strip Blade Long	39463	0.1142	2.9	-
K36M-2.9 Strip Blade Short	39464	0.1142	2.9	-
K36M-3.0 Strip Blade Long	39465	0.1181	3.0	-
K36M-3.0 Strip Blade Short	39466	0.1181	3.0	-
K36M-3.1 Strip Blade Long	21736	0.1221	3.1	-
K36M-3.1 Strip Blade Short	21737	0.1221	3.1	-
K36M-3.2 Strip Blade Long	24055	0.1260	3.2	-
K36M-3.2 Strip Blade Short	24056	0.1260	3.2	-
K36M-3.3 Strip Blade Long	39467	0.1299	3.3	-
K36M-3.3 Strip Blade Short	39468	0.1299	3.3	-
K36M-3.4 Strip Blade Long	22783	0.1339	3.4	-
K36M-3.4 Strip Blade Short	22784	0.1339	3.4	-
K36M-3.5 Strip Blade Long	32457	0.1378	3.5	-
K36M-3.5 Strip Blade Short	32458	0.1378	3.5	-
K36M-3.6 Strip Blade Long	39469	0.1417	3.6	-
K36M-3.6 Strip Blade Short	39470	0.1417	3.6	-
K36M-3.7 Strip Blade Long	39471	0.1457	3.7	-
K36M-3.7 Strip Blade Short	39472	0.1457	3.7	-
K36M-3.8 Strip Blade Long	15560	0.1496	3.8	-
K36M-3.8 Strip Blade Short	20262	0.1496	3.8	-
K36M-3.9 Strip Blade Long	25499	0.1535	3.9	-
K36M-3.9 Strip Blade Short	15561	0.1535	3.9	-
K36M-4.0 Strip Blade Long	19554	0.1575	4.0	-
K36M-4.0 Strip Blade Short	19555	0.1575	4.0	-

Continued on Next Page

C353 Series Blades

Used in the following *Kodera* machines:

Casting C353 | Casting C355 | Casting C373 | Casting C375



Casting C353 M-Series® Blades (continued)

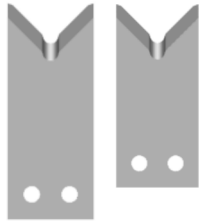
Mechtrix Description	Mechtrix Part Number	Blade Form Diameter (in)	Diameter (mm)	OEM Part Number
K36M-4.1 Strip Blade Long	16072	0.1614	4.1	-
K36M-4.1 Strip Blade Short	16073	0.1614	4.1	-
K36M-4.2 Strip Blade Long	39473	0.1654	4.2	-
K36M-4.2 Strip Blade Short	39474	0.1654	4.2	-
K36M-4.3 Strip Blade Long	39474	0.1693	4.3	-
K36M-4.3 Strip Blade Short	39475	0.1693	4.3	-
K36M-4.4 Strip Blade Long	20018	0.1732	4.4	-
K36M-4.4 Strip Blade Short	20019	0.1732	4.4	-
K36M-4.5 Strip Blade Long	22793	0.1772	4.5	-
K36M-4.5 Strip Blade Short	22794	0.1772	4.5	-
K36M-4.6 Strip Blade Long	15425	0.1811	4.6	-
K36M-4.6 Strip Blade Short	15426	0.1811	4.6	-
K36M-4.7 Strip Blade Long	17384	0.1850	4.7	-
K36M-4.7 Strip Blade Short	17385	0.1850	4.7	-
K36M-4.8 Strip Blade Long	39477	0.1890	4.8	-
K36M-4.8 Strip Blade Short	39478	0.1890	4.8	-
K36M-4.9 Strip Blade Long	39479	0.1929	4.9	-
K36M-4.9 Strip Blade Short	39480	0.1929	4.9	-
K36M-5.0 Strip Blade Long	17960	0.1969	5.0	-
K36M-5.0 Strip Blade Short	17959	0.1969	5.0	-
K36M-5.1 Strip Blade Long	39481	0.2008	5.1	-
K36M-5.1 Strip Blade Short	39482	0.2008	5.1	-
K36M-5.2 Strip Blade Long	39483	0.2047	5.2	-
K36M-5.2 Strip Blade Short	39484	0.2047	5.2	-
K36M-5.3 Strip Blade Long	39485	0.2087	5.3	-
K36M-5.3 Strip Blade Short	39486	0.2087	5.3	-
K36M-5.4 Strip Blade Long	16700	0.2126	5.4	-
K36M-5.4 Strip Blade Short	16699	0.2126	5.4	-
K36M-5.5 Strip Blade Long	21743	0.2165	5.5	-
K36M-5.5 Strip Blade Short	21744	0.2165	5.5	-
K36M-5.6 Strip Blade Long	39487	0.2205	5.6	-
K36M-5.6 Strip Blade Short	39488	0.2205	5.6	-
K36M-5.7 Strip Blade Long	39489	0.2244	5.7	-
K36M-5.7 Strip Blade Short	39490	0.2244	5.7	-
K36M-5.8 Strip Blade Long	22492	0.2284	5.8	-
K36M-5.8 Strip Blade Short	22493	0.2284	5.8	-
K36M-5.9 Strip Blade Long	31942	0.2323	5.9	-
K36M-5.9 Strip Blade Short	31943	0.2323	5.9	-
K36M-6.0 Strip Blade Long	18396	0.2362	6.0	-
K36M-6.0 Strip Blade Short	18370	0.2362	6.0	-
K36M-6.1 Strip Blade Long	21809	0.2402	6.1	-
K36M-6.1 Strip Blade Short	21810	0.2402	6.1	-
K36M-6.2 Strip Blade Long	30220	0.2441	6.2	-
K36M-6.2 Strip Blade Short	30221	0.2441	6.2	-
K36M-6.3 Strip Blade Long	13237	0.2480	6.3	-
K36M-6.3 Strip Blade Short	13238	0.2480	6.3	-

Continued on Next Page

C353 Series Blades

Used in the following *Kodera* machines:

Casting C353 | Casting C355 | Casting C373 | Casting C375



Casting C353 M-Series® Blades (continued)

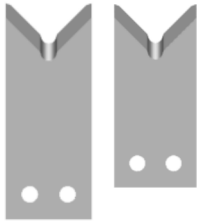
Mechtrix Description	Mechtrix Part Number	Blade Form (in)	Diameter (mm)	OEM Part Number
K36M-6.4 Strip Blade Long	16703	0.2520	6.4	-
K36M-6.4 Strip Blade Short	16702	0.2520	6.4	-
K36M-6.5 Strip Blade Long	20975	0.2559	6.5	-
K36M-6.5 Strip Blade Short	20976	0.2559	6.5	-
K36M-6.6 Strip Blade Long	17382	0.2598	6.6	-
K36M-6.6 Strip Blade Short	17383	0.2598	6.6	-
K36M-6.7 Strip Blade Long	39491	0.2638	6.7	-
K36M-6.7 Strip Blade Short	39492	0.2638	6.7	-
K36M-6.8 Strip Blade Long	21126	0.2677	6.8	-
K36M-6.8 Strip Blade Short	21127	0.2677	6.8	-
K36M-6.9 Strip Blade Long	39493	0.2717	6.9	-
K36M-6.9 Strip Blade Short	39494	0.2717	6.9	-
K36M-7.0 Strip Blade Long	24284	0.2362	7.0	-
K36M-7.0 Strip Blade Short	24285	0.2362	7.0	-
K36M-7.1 Strip Blade Long	17964	0.2795	7.1	-
K36M-7.1 Strip Blade Short	17965	0.2795	7.1	-
K36M-7.2 Strip Blade Long	22791	0.2835	7.2	-
K36M-7.2 Strip Blade Short	22792	0.2835	7.2	-
K36M-7.3 Strip Blade Long	25546	0.2874	7.3	-
K36M-7.3 Strip Blade Short	25547	0.2874	7.3	-
K36M-7.4 Strip Blade Long	39495	0.2913	7.4	-
K36M-7.4 Strip Blade Short	39496	0.2913	7.4	-
K36M-7.5 Strip Blade Long	22789	0.2953	7.5	-
K36M-7.5 Strip Blade Short	22790	0.2953	7.5	-
K36M-7.6 Strip Blade Long	39497	0.2992	7.6	-
K36M-7.6 Strip Blade Short	39498	0.2992	7.6	-
K36M-7.7 Strip Blade Long	39499	0.3032	7.7	-
K36M-7.7 Strip Blade Short	39500	0.3032	7.7	-
K36M-7.8 Strip Blade Long	16798	0.3071	7.8	-
K36M-7.8 Strip Blade Short	16799	0.3071	7.8	-
K36M-7.9 Strip Blade Long	9501	0.3110	7.9	-
K36M-7.9 Strip Blade Short	39502	0.3110	7.9	-
K36M-8.0 Strip Blade Long	19591	0.2362	8.0	-
K36M-8.0 Strip Blade Short	19592	0.2362	8.0	-
K36M-8.1 Strip Blade Long	39503	0.2795	8.1	-
K36M-8.1 Strip Blade Short	39504	0.2795	8.1	-
K36M-8.2 Strip Blade Long	39505	0.2835	8.2	-
K36M-8.2 Strip Blade Short	39506	0.2835	8.2	-
K36M-8.3 Strip Blade Long	39507	0.2874	8.3	-
K36M-8.3 Strip Blade Short	39508	0.2874	8.3	-
K36M-8.4 Strip Blade Long	17380	0.2913	8.4	-
K36M-8.4 Strip Blade Short	17381	0.2913	8.4	-
K36M-8.5 Strip Blade Long	21739	0.2953	8.5	-
K36M-8.5 Strip Blade Short	21740	0.2953	8.5	-
K36M-8.6 Strip Blade Long	39509	0.2992	8.6	-
K36M-8.6 Strip Blade Short	39510	0.2992	8.6	-

Continued on Next Page

C353 Series Blades

Used in the following *Kodera* machines:

Casting C353 | Casting C355 | Casting C373 | Casting C375



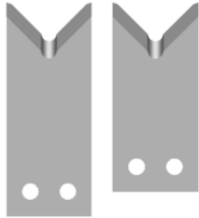
Casting C353 M-Series® Blades (continued)

Mechtrix Description	Mechtrix Part Number	Blade Form (in)	Diameter (mm)	OEM Part Number
K36M-8.7 Strip Blade Long	29376	0.3032	8.7	-
K36M-8.7 Strip Blade Short	29377	0.3032	8.7	-
K36M-8.8 Strip Blade Long	39511	0.3071	8.8	-
K36M-8.8 Strip Blade Short	39512	0.3071	8.8	-
K36M-8.9 Strip Blade Long	39513	0.3110	8.9	-
K36M-8.9 Strip Blade Short	39514	0.3110	8.9	-
K36M-9.0 Strip Blade Long	22481	0.2362	9.0	-
K36M-9.0 Strip Blade Short	22482	0.2362	9.0	-
K36M-9.1 Strip Blade Long	39515	0.2795	9.1	-
K36M-9.1 Strip Blade Short	39516	0.2795	9.1	-
K36M-9.2 Strip Blade Long	39517	0.2835	9.2	-
K36M-9.2 Strip Blade Short	39518	0.2835	9.2	-
K36M-9.3 Strip Blade Long	39519	0.2874	9.3	-
K36M-9.3 Strip Blade Short	39520	0.2874	9.3	-
K36M-9.4 Strip Blade Long	16437	0.2913	9.4	-
K36M-9.4 Strip Blade Short	16438	0.2913	9.4	-
K36M-9.5 Strip Blade Long	21741	0.2953	9.5	-
K36M-9.5 Strip Blade Short	21472	0.2953	9.5	-
K36M-9.6 Strip Blade Long	39521	0.2992	9.6	-
K36M-9.6 Strip Blade Short	39522	0.2992	9.6	-
K36M-9.7 Strip Blade Long	22787	0.3032	9.7	-
K36M-9.7 Strip Blade Short	22788	0.3032	9.7	-
K36M-9.8 Strip Blade Long	39523	0.3071	9.8	-
K36M-9.8 Strip Blade Short	39524	0.3071	9.8	-
K36M-9.9 Strip Blade Long	22785	0.3110	9.9	-
K36M-9.9 Strip Blade Short	22786	0.3110	9.9	-
K36M-10.0 Strip Blade Long	39525	0.2362	10.0	-
K36M-10.0 Strip Blade Short	39526	0.2362	10.0	-
K36M-10.1 Strip Blade Long	39527	0.2795	10.1	-
K36M-10.1 Strip Blade Short	39528	0.2795	10.1	-
K36M-10.2 Strip Blade Long	39529	0.2835	10.2	-
K36M-10.2 Strip Blade Short	39530	0.2835	10.2	-
K36M-10.3 Strip Blade Long	39531	0.2874	10.3	-
K36M-10.3 Strip Blade Short	39532	0.2874	10.3	-
K36M-10.4 Strip Blade Long	39533	0.2913	10.4	-
K36M-10.4 Strip Blade Short	39534	0.2913	10.4	-
K36M-10.5 Strip Blade Long	22439	0.2953	10.5	-
K36M-10.5 Strip Blade Short	22440	0.2953	10.5	-
K36M-10.6 Strip Blade Long	39535	0.2992	10.6	-
K36M-10.6 Strip Blade Short	39536	0.2992	10.6	-
K36M-10.7 Strip Blade Long	39537	0.3032	10.7	-
K36M-10.7 Strip Blade Short	39538	0.3032	10.7	-
K36M-10.8 Strip Blade Long	39539	0.3071	10.8	-
K36M-10.8 Strip Blade Short	39540	0.3071	10.8	-
K36M-10.9 Strip Blade Long	39541	0.3110	10.9	-
K36M-10.9 Strip Blade Short	39542	0.3110	10.9	-
K36M-11.0 Strip Blade Long	19815	0.2362	11.0	-
K36M-11.0 Strip Blade Short	19816	0.2362	11.0	-

C353 Series Blades

Used in the following *Kodera* machines:

Casting C353 | Casting C355 | Casting C373 | Casting C375



Casting C353 Full Radius Blades

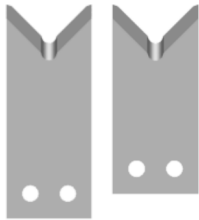
Mechtrix Description	Mechtrix Part Number	Blade Form (in)	Diameter (mm)	OEM Part Number
K36-0.4D Strip Blade Long	39543	0.0158	0.4	-
K36-0.4D Strip Blade Short	39544	0.0158	0.4	-
K36-0.5D Strip Blade Long	39545	0.0197	0.5	-
K36-0.5D Strip Blade Short	39546	0.0197	0.5	-
K36-0.6D Strip Blade Long	39547	0.0236	0.6	-
K36-0.6D Strip Blade Short	39548	0.0236	0.6	-
K36-0.7D Strip Blade Long	39549	0.0276	0.7	-
K36-0.7D Strip Blade Short	39550	0.0276	0.1	-
K36-0.8D Strip Blade Long	39551	0.0315	0.8	-
K36-0.8D Strip Blade Short	39552	0.0315	0.8	-
K36-0.9D Strip Blade Long	39553	0.0354	0.9	-
K36-0.9D Strip Blade Short	39554	0.0354	0.9	-
K36-1.0D Strip Blade Long	39555	0.0394	1.0	-
K36-1.0D Strip Blade Short	39556	0.0394	1.0	-
K36-1.1D Strip Blade Long	39557	0.0433	1.1	-
K36-1.1D Strip Blade Short	39558	0.0433	1.1	-
K36-1.2D Strip Blade Long	39559	0.0472	1.2	-
K36-1.2D Strip Blade Short	39560	0.0472	1.2	-
K36-1.3D Strip Blade Long	39561	0.0512	1.3	-
K36-1.3D Strip Blade Short	39562	0.0512	1.3	-
K36-1.4D Strip Blade Long	39563	0.0551	1.4	-
K36-1.4D Strip Blade Short	39564	0.0551	1.4	-
K36-1.5D Strip Blade Long	37987	0.0591	1.5	-
K36-1.5D Strip Blade Short	37988	0.0591	1.5	-
K36-1.6D Strip Blade Long	39565	0.0630	1.6	-
K36-1.6D Strip Blade Short	39566	0.0630	1.6	-
K36-1.7D Strip Blade Long	39567	0.0669	1.7	-
K36-1.7D Strip Blade Short	39568	0.0699	1.7	-
K36-1.8D Strip Blade Long	39569	0.0709	1.8	-
K36-1.8D Strip Blade Short	39570	0.0709	1.8	-
K36-1.9D Strip Blade Long	39571	0.0748	1.9	-
K36-1.9D Strip Blade Short	39572	0.0748	1.9	-
K36-2.0D Strip Blade Long	39573	0.0787	2.0	-
K36-2.0D Strip Blade Short	39574	0.0787	2.0	-
K36-2.1D Strip Blade Long	39575	0.0827	2.1	-
K36-2.1D Strip Blade Short	39576	0.0827	2.1	-
K36-2.2D Strip Blade Long	39577	0.0866	2.2	-
K36-2.2D Strip Blade Short	39578	0.0866	2.2	-
K36-2.3D Strip Blade Long	39579	0.0906	2.3	-
K36-2.3D Strip Blade Short	39580	0.0906	2.3	-
K36-2.4D Strip Blade Long	39581	0.0945	2.4	-
K36-2.4D Strip Blade Short	39582	0.0945	2.4	-
K36-2.5D Strip Blade Long	39583	0.0984	2.5	-
K36-2.5D Strip Blade Short	39584	0.0984	2.5	-
K36-2.6D Strip Blade Long	39585	0.1024	2.6	-
K36-2.6D Strip Blade Short	39586	0.0102	2.6	-

Continued on Next Page

C353 Series Blades

Used in the following *Kodera* machines:

Casting C353 | Casting C355 | Casting C373 | Casting C375



Casting C353 Full Radius Blades (continued)

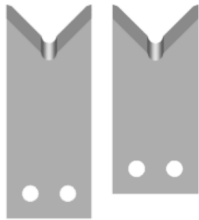
Mechtrix Description	Mechtrix Part Number	Blade Form (in)	Diameter (mm)	OEM Part Number
K36-2.7D Strip Blade Long	39587	0.1063	2.7	-
K36-2.7D Strip Blade Short	39588	0.1063	2.7	-
K36-2.8D Strip Blade Long	39589	0.1102	2.8	-
K36-2.8D Strip Blade Short	39590	0.1102	2.8	-
K36-2.9D Strip Blade Long	39591	0.1142	2.9	-
K36-2.9D Strip Blade Short	39592	0.1142	2.9	-
K36-3.0D Strip Blade Long	39593	0.1181	3.0	-
K36-3.0D Strip Blade Short	39594	0.1181	3.0	-
K36-3.1D Strip Blade Long	39595	0.1221	3.1	-
K36-3.1D Strip Blade Short	39596	0.1221	3.1	-
K36-3.2D Strip Blade Long	39597	0.1260	3.2	-
K36-3.2D Strip Blade Short	39598	0.1260	3.2	-
K36-3.3D Strip Blade Long	37989	0.1299	3.3	-
K36-3.3D Strip Blade Short	37990	0.1299	3.3	-
K36-3.4D Strip Blade Long	39599	0.1339	3.4	-
K36-3.4D Strip Blade Short	39600	0.1339	3.4	-
K36-3.5D Strip Blade Long	39601	0.1378	3.5	-
K36-3.5D Strip Blade Short	39602	0.1378	3.5	-
K36-3.6D Strip Blade Long	39603	0.1417	3.6	-
K36-3.6D Strip Blade Short	39604	0.1417	3.6	-
K36-3.7D Strip Blade Long	39605	0.1457	3.7	-
K36-3.7D Strip Blade Short	39606	0.1457	3.7	-
K36-3.8D Strip Blade Long	39607	0.1496	3.8	-
K36-3.8D Strip Blade Short	39608	0.1496	3.8	-
K36-3.9D Strip Blade Long	39609	0.1535	3.9	-
K36-3.9D Strip Blade Short	39610	0.1535	3.9	-
K36-4.0D Strip Blade Long	39611	0.1575	4.0	-
K36-4.0D Strip Blade Short	39612	0.1575	4.0	-
K36-4.1D Strip Blade Long	39613	0.1614	4.1	-
K36-4.1D Strip Blade Short	39614	0.1614	4.1	-
K36-4.2D Strip Blade Long	39615	0.1654	4.2	-
K36-4.2D Strip Blade Short	39616	0.1654	4.2	-
K36-4.3D Strip Blade Long	39617	0.1693	4.3	-
K36-4.3D Strip Blade Short	39618	0.1693	4.3	-
K36-4.4D Strip Blade Long	39619	0.1732	4.4	-
K36-4.4D Strip Blade Short	39620	0.1732	4.4	-
K36-4.5D Strip Blade Long	39621	0.1772	4.5	-
K36-4.5D Strip Blade Short	39622	0.1772	4.5	-
K36-4.6D Strip Blade Long	39623	0.1811	4.6	-
K36-4.6D Strip Blade Short	39624	0.1811	4.6	-
K36-4.7D Strip Blade Long	39625	0.1850	4.7	-
K36-4.7D Strip Blade Short	39626	0.1850	4.7	-
K36-4.8D Strip Blade Long	39627	0.1890	4.8	-
K36-4.8D Strip Blade Short	39628	0.1890	4.8	-
K36-4.9D Strip Blade Long	39629	0.1929	4.9	-
K36-4.9D Strip Blade Short	39630	0.1929	4.9	-

Continued on Next Page

C353 Series Blades

Used in the following *Kodera* machines:

Casting C353 | Casting C355 | Casting C373 | Casting C375



Casting C353 Full Radius Blades (continued)

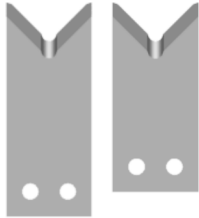
Mechtrix Description	Mechtrix Part Number	Blade Form (in)	Diameter (mm)	OEM Part Number
K36-5.0D Strip Blade Long	39631	0.1969	5.0	-
K36-5.0D Strip Blade Short	39632	0.1969	5.0	-
K36-5.1D Strip Blade Long	39633	0.2008	5.1	-
K36-5.1D Strip Blade Short	39634	0.2008	5.1	-
K36-5.2D Strip Blade Long	39635	0.2047	5.2	-
K36-5.2D Strip Blade Short	39636	0.2047	5.2	-
K36-5.3D Strip Blade Long	39637	0.2087	5.3	-
K36-5.3D Strip Blade Short	39638	0.2087	5.3	-
K36-5.4D Strip Blade Long	39639	0.2126	5.4	-
K36-5.4D Strip Blade Short	39640	0.2126	5.4	-
K36-5.5D Strip Blade Long	31633	0.2165	5.5	-
K36-5.5D Strip Blade Short	31634	0.2165	5.5	-
K36-5.6D Strip Blade Long	30712	0.2205	5.6	-
K36-5.6D Strip Blade Short	30713	0.2205	5.6	-
K36-5.7D Strip Blade Long	39641	0.2244	5.7	-
K36-5.7D Strip Blade Short	39642	0.2244	5.7	-
K36-5.8D Strip Blade Long	39643	0.2284	5.8	-
K36-5.8D Strip Blade Short	39644	0.2284	5.8	-
K36-5.9D Strip Blade Long	39645	0.2323	5.9	-
K36-5.9D Strip Blade Short	39646	0.2323	5.9	-
K36-6.0D Strip Blade Long	28261	0.2362	6.0	-
K36-6.0D Strip Blade Short	28262	0.2362	6.0	-
K36-6.1D Strip Blade Long	39647	0.2402	6.1	-
K36-6.1D Strip Blade Short	39648	0.2402	6.1	-
K36-6.2D Strip Blade Long	39649	0.2441	6.2	-
K36-6.2D Strip Blade Short	39650	0.2441	6.2	-
K36-6.3D Strip Blade Long	39651	0.2480	6.3	-
K36-6.3D Strip Blade Short	39652	0.2480	6.3	-
K36-6.4D Strip Blade Long	39653	0.2520	6.4	-
K36-6.4D Strip Blade Short	39654	0.2520	6.4	-
K36-6.5D Strip Blade Long	39655	0.2559	6.5	-
K36-6.5D Strip Blade Short	39656	0.2559	6.5	-
K36-6.6D Strip Blade Long	39657	0.2598	6.6	-
K36-6.6D Strip Blade Short	39658	0.2598	6.6	-
K36-6.7D Strip Blade Long	39659	0.2638	6.7	-
K36-6.7D Strip Blade Short	39660	0.2638	6.7	-
K36-6.8D Strip Blade Long	39661	0.2677	6.8	-
K36-6.8D Strip Blade Short	39662	0.2677	6.8	-
K36-6.9D Strip Blade Long	39663	0.2717	6.9	-
K36-6.9D Strip Blade Short	39664	0.2717	6.9	-
K36-7.0D Strip Blade Long	29673	0.2362	7.0	-
K36-7.0D Strip Blade Short	29674	0.2362	7.0	-
K36-7.1D Strip Blade Long	39665	0.2795	7.1	-
K36-7.1D Strip Blade Short	39666	0.2795	7.1	-
K36-7.2D Strip Blade Long	39667	0.2835	7.2	-
K36-7.2D Strip Blade Short	39668	0.2835	7.2	-

Continued on Next Page

C353 Series Blades

Used in the following *Kodera* machines:

Casting C353 | Casting C355 | Casting C373 | Casting C375



Casting C353 Full Radius Blades (continued)

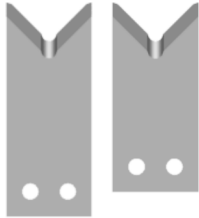
Mechtrix Description	Mechtrix Part Number	Blade Form (in)	Diameter (mm)	OEM Part Number
K36-7.3D Strip Blade Long	39669	0.2874	7.3	-
K36-7.3D Strip Blade Short	39670	0.2874	7.3	-
K36-7.4D Strip Blade Long	39671	0.2913	7.4	-
K36-7.4D Strip Blade Short	39672	0.2913	7.4	-
K36-7.5D Strip Blade Long	39673	0.2953	7.5	-
K36-7.5D Strip Blade Short	39674	0.2953	7.5	-
K36-7.6D Strip Blade Long	39675	0.2992	7.6	-
K36-7.6D Strip Blade Short	39676	0.2992	7.6	-
K36-7.7D Strip Blade Long	39677	0.3032	7.7	-
K36-7.7D Strip Blade Short	39678	0.3032	7.7	-
K36-7.8D Strip Blade Long	39679	0.3071	7.8	-
K36-7.8D Strip Blade Short	39680	0.3071	7.8	-
K36-7.9D Strip Blade Long	39681	0.3110	7.9	-
K36-7.9D Strip Blade Short	39682	0.3110	7.9	-
K36-8.0D Strip Blade Long	39683	0.2362	8.0	-
K36-8.0D Strip Blade Short	39684	0.2362	8.0	-
K36-8.1D Strip Blade Long	39685	0.2795	8.1	-
K36-8.1D Strip Blade Short	39686	0.2795	8.1	-
K36-8.2D Strip Blade Long	39687	0.2835	8.2	-
K36-8.2D Strip Blade Short	39688	0.2835	8.2	-
K36-8.3D Strip Blade Long	39689	0.2874	8.3	-
K36-8.3D Strip Blade Short	39690	0.2874	8.3	-
K36-8.4D Strip Blade Long	39691	0.2913	8.4	-
K36-8.4D Strip Blade Short	39692	0.2913	8.4	-
K36-8.5D Strip Blade Long	39693	0.2953	8.5	-
K36-8.5D Strip Blade Short	39694	0.2953	8.5	-
K36-8.6D Strip Blade Long	39695	0.2992	8.6	-
K36-8.6D Strip Blade Short	39696	0.2992	8.6	-
K36-8.7D Strip Blade Long	39697	0.3032	8.7	-
K36-8.7D Strip Blade Short	39698	0.3032	8.7	-
K36-8.8D Strip Blade Long	39699	0.3071	8.8	-
K36-8.8D Strip Blade Short	39700	0.3071	8.8	-
K36-8.9D Strip Blade Long	39701	0.3110	8.9	-
K36-8.9D Strip Blade Short	39702	0.3110	8.9	-
K36-9.0D Strip Blade Long	39703	0.2362	9.0	-
K36-9.0D Strip Blade Short	39704	0.2362	9.0	-
K36-9.1D Strip Blade Long	39705	0.2795	9.1	-
K36-9.1D Strip Blade Short	39706	0.2795	9.1	-
K36-9.2D Strip Blade Long	39707	0.2835	9.2	-
K36-9.2D Strip Blade Short	39708	0.2835	9.2	-
K36-9.3D Strip Blade Long	39709	0.2874	9.3	-
K36-9.3D Strip Blade Short	39710	0.2874	9.3	-
K36-9.4D Strip Blade Long	39711	0.2913	9.4	-
K36-9.4D Strip Blade Short	39712	0.2913	9.4	-
K36-9.5D Strip Blade Long	39713	0.2953	9.5	-
K36-9.5D Strip Blade Short	39714	0.2953	9.5	-

Continued on Next Page

C353 Series Blades

Used in the following *Kodera* machines:

Casting C353 | Casting C355 | Casting C373 | Casting C375



Casting C353 Full Radius Blades (continued)

Mechtrix Description	Mechtrix Part Number	Blade Form Diameter (in)	Diameter (mm)	OEM Part Number
K36-9.6D Strip Blade Long	39715	0.2992	9.6	-
K36-9.6D Strip Blade Short	39716	0.2992	9.6	-
K36-9.7D Strip Blade Long	39717	0.3032	9.7	-
K36-9.7D Strip Blade Short	39718	0.3032	9.7	-
K36-9.8D Strip Blade Long	39719	0.3071	9.8	-
K36-9.8D Strip Blade Short	39720	0.3071	9.8	-
K36-9.9D Strip Blade Long	39721	0.3110	9.9	-
K36-9.9D Strip Blade Short	39722	0.3110	9.9	-
K36-10.0D Strip Blade Long	39723	0.2362	10.0	-
K36-10.0D Strip Blade Short	39724	0.2362	10.0	-
K36-10.1D Strip Blade Long	39725	0.2795	10.1	-
K36-10.1D Strip Blade Short	39726	0.2795	10.1	-
K36-10.2D Strip Blade Long	39727	0.2835	10.2	-
K36-10.2D Strip Blade Short	39728	0.2835	10.2	-
K36-10.3D Strip Blade Long	39729	0.2874	10.3	-
K36-10.3D Strip Blade Short	39730	0.2874	10.3	-
K36-10.4D Strip Blade Long	39731	0.2913	10.4	-
K36-10.4D Strip Blade Short	39732	0.2913	10.4	-
K36-10.5D Strip Blade Long	39733	0.2953	10.5	-
K36-10.5D Strip Blade Short	39734	0.2953	10.5	-
K36-10.6D Strip Blade Long	39735	0.2992	10.6	-
K36-10.6D Strip Blade Short	39736	0.2992	10.6	-
K36-10.7D Strip Blade Long	39737	0.3032	10.7	-
K36-10.7D Strip Blade Short	39738	0.3032	10.7	-
K36-10.8D Strip Blade Long	39739	0.3071	10.8	-
K36-10.8D Strip Blade Short	39740	0.3071	10.8	-
K36-10.9D Strip Blade Long	39741	0.3110	10.9	-
K36-10.9D Strip Blade Short	39742	0.3110	10.9	-
K36-11.0D Strip Blade Long	39743	0.2362	11.0	-
K36-11.0D Strip Blade Short	39744	0.2362	11.0	-



Casting C355 and C375 Die-Type Blades and Guides

Die-Type Blades are available in 0.1mm increments in the following sizes:

C355-D-0.4 through **C355-D-11.0**

Casting C355 Die-Type Stripping Blades require the use of C355-G-## Guides and Spacers.