

C351 & C371 Series Blades

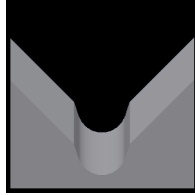
Used in the following *Kodera* machines:

Casting C351 | Casting C371

Available C351 & C371 Blade Form Geometries Include:



Universal



M-Series®



Full-Radius



Casting C351 and C371 M-Series® Blades

Mechtrix Description	Mechtrix Part Number	Blade Form Diameter		OEM Part Number
		(in)	(mm)	
K34 (D2) Universal Strip Blade (S4)	07710-02	-	-	07-015-B0
K34 (C15) Universal Strip Blade (S7) (Ultra Hard)	07710-01	-	-	07-015-C0
	07710-04	-	-	07-015-A0



Casting C351 and C371 M-Series® Blades

Mechtrix Description	Mechtrix Part Number	Blade Form Diameter		OEM Part Number
		(in)	(mm)	
K34M-0.3 Strip Blade	23608	0.0118	0.3	-
K34M-0.4 Strip Blade	19064	0.0158	0.4	-
K34M-0.5 Strip Blade	13485	0.0197	0.5	-
K34M-0.6 Strip Blade	13073	0.0236	0.6	-
K34M-0.7 Strip Blade	19063	0.0276	0.7	-
K34M-0.8 Strip Blade	17216	0.0315	0.8	-
K34M-0.9 Strip Blade	16718	0.0354	0.9	-
K34M-1.0 Strip Blade	16971	0.0394	1.0	-
K34M-1.1 Strip Blade	21192	0.0433	1.1	-
K34M-1.2 Strip Blade	13780	0.0472	1.2	-
K34M-1.3 Strip Blade	17670	0.0512	1.3	-
K34M-1.4 Strip Blade	19102	0.0551	1.4	-
K34M-1.5 Strip Blade	17671	0.0591	1.5	-
K34M-1.6 Strip Blade	14914	0.0630	1.6	-
K34M-1.7 Strip Blade	16596	0.0669	1.7	-
K34M-1.8 Strip Blade	17069	0.0709	1.8	-
K34M-1.9 Strip Blade	17985	0.0748	1.9	-
K34M-2.0 Strip Blade	14515	0.0787	2.0	-
K34M-2.1 Strip Blade	13890	0.0827	2.1	-
K34M-2.2 Strip Blade	20745	0.0866	2.2	-
K34M-2.3 Strip Blade	14086	0.0906	2.3	-
K34M-2.4 Strip Blade	16455	0.0945	2.4	-
K34M-2.5 Strip Blade	14650	0.0984	2.5	-
K34M-2.6 Strip Blade	17804	0.1024	2.6	-
K34M-2.7 Strip Blade	25054	0.1063	2.7	-
K34M-2.8 Strip Blade	14165	0.1102	2.8	-
K34M-2.9 Strip Blade	16875	0.1142	2.9	-

Continued on Next Page

C351 & C371 Series Blades

Used in the following *Kodera* machines:

Casting C351 | Casting C371



Casting C351 and C371 M-Series® Blades (continued)

Mechtrix Description	Mechtrix Part Number	Blade Form (in)	Diameter (mm)	OEM Part Number
K34M-3.0 Strip Blade	17963	0.1181	3.0	-
K34M-3.1 Strip Blade	18080	0.1221	3.1	-
K34M-3.2 Strip Blade	13998	0.1260	3.2	-
K34M-3.3 Strip Blade	17164	0.1299	3.3	-
K34M-3.4 Strip Blade	18014	0.1339	3.4	-
K34M-3.5 Strip Blade	16363	0.1378	3.5	-
K34M-3.6 Strip Blade	17162	0.1417	3.6	-
K34M-3.7 Strip Blade	19711	0.1457	3.7	-
K34M-3.8 Strip Blade	16456	0.1496	3.8	-
K34M-3.9 Strip Blade	17163	0.1535	3.9	-
K34M-4.0 Strip Blade	14553	0.1575	4.0	-
K34M-4.1 Strip Blade	20816	0.1614	4.1	-
K34M-4.2 Strip Blade	17547	0.1654	4.2	-
K34M-4.3 Strip Blade	19283	0.1693	4.3	-
K34M-4.4 Strip Blade	14530	0.1732	4.4	-
K34M-4.5 Strip Blade	19451	0.1772	4.5	-
K34M-4.6 Strip Blade	14736	0.1811	4.6	-
K34M-4.7 Strip Blade	20578	0.1850	4.7	-
K34M-4.8 Strip Blade	14638	0.1890	4.8	-
K34M-4.9 Strip Blade	16346	0.1929	4.9	-
K34M-5.0 Strip Blade	13467	0.1969	5.0	-
K34M-5.1 Strip Blade	16517	0.2008	5.1	-
K34M-5.2 Strip Blade	17161	0.2047	5.2	-
K34M-5.3 Strip Blade	22480	0.2087	5.3	-
K34M-5.4 Strip Blade	15321	0.2126	5.4	-
K34M-5.5 Strip Blade	14095	0.2165	5.5	-
K34M-5.6 Strip Blade	19978	0.2205	5.6	-
K34M-5.7 Strip Blade	20117	0.2244	5.7	-
K34M-5.8 Strip Blade	21383	0.2284	5.8	-
K34M-5.9 Strip Blade	25616	0.2323	5.9	-
K34M-6.0 Strip Blade	21890	0.2362	6.0	-
K34M-6.1 Strip Blade	13468	0.2402	6.1	-
K34M-6.2 Strip Blade	20579	0.2441	6.2	-
K34M-6.3 Strip Blade	19264	0.2480	6.3	-
K34M-6.4 Strip Blade	19979	0.2520	6.4	-
K34M-6.5 Strip Blade	20580	0.2559	6.5	-
K34M-6.6 Strip Blade	21889	0.2598	6.6	-
K34M-6.7 Strip Blade	20442	0.2638	6.7	-
K34M-6.8 Strip Blade	20581	0.2677	6.8	-
K34M-6.9 Strip Blade	20582	0.2717	6.9	-
K34M-7.0 Strip Blade	24282	0.2756	7.0	-
K34M-7.1 Strip Blade	37765	0.2795	7.1	-
K34M-7.2 Strip Blade	16706	0.2835	7.2	-
K34M-7.3 Strip Blade	15582	0.2874	7.3	-
K34M-7.4 Strip Blade	39340	0.2913	7.4	-
K34M-7.5 Strip Blade	16995	0.2953	7.5	-

Continued on Next Page

C351 & C371 Series Blades

Used in the following *Kodera* machines:

Casting C351 | Casting C371



Casting C351 and C371 M-Series® Blades (continued)

Mechtrix Description	Mechtrix Part Number	Blade Form Diameter (in)	Blade Form Diameter (mm)	OEM Part Number
K34M-7.6 Strip Blade	39341	0.2992	7.6	-
K34M-7.7 Strip Blade	19743	0.3032	7.7	-
K34M-7.8 Strip Blade	39342	0.3071	7.8	-
K34M-7.9 Strip Blade	39343	0.3110	7.9	-
K34M-8.0 Strip Blade	16217	0.3150	8.0	-
K34M-8.1 Strip Blade	14504	0.3189	8.1	-
K34M-8.2 Strip Blade	19739	0.3228	8.2	-
K34M-8.3 Strip Blade	17134	0.3268	8.3	-
K34M-8.4 Strip Blade	39344	0.3307	8.4	-
K34M-8.5 Strip Blade	28807	0.3346	8.5	-
K34M-8.6 Strip Blade	13486	0.3386	8.6	-
K34M-8.7 Strip Blade	24634	0.3425	8.7	-
K34M-8.8 Strip Blade	39345	0.3465	8.8	-
K34M-8.9 Strip Blade	13883	0.3504	8.9	-
K34M-9.0 Strip Blade	39346	0.3543	9.0	-
K34M-9.1 Strip Blade	23383	0.3583	9.1	-
K34M-9.2 Strip Blade	39347	0.3622	9.2	-
K34M-9.3 Strip Blade	39348	0.3661	9.3	-
K34M-9.4 Strip Blade	39349	0.3701	9.4	-
K34M-9.5 Strip Blade	20752	0.3740	9.5	-
K34M-9.6 Strip Blade	39350	0.3780	9.6	-
K34M-9.7 Strip Blade	25487	0.3819	9.7	-
K34M-9.8 Strip Blade	39351	0.3858	9.8	-
K34M-9.9 Strip Blade	39352	0.3898	9.9	-
K34M-10.0 Strip Blade	39353	0.3937	10.0	-
K34M-10.1 Strip Blade	39354	0.3976	10.1	-
K34M-10.2 Strip Blade	39355	0.4016	10.2	-
K34M-10.3 Strip Blade	39356	0.4055	10.3	-
K34M-10.4 Strip Blade	39357	0.4094	10.4	-
K34M-10.5 Strip Blade	39358	0.4134	10.5	-
K34M-10.6 Strip Blade	39359	0.4173	10.6	-
K34M-10.7 Strip Blade	39360	0.4213	10.7	-
K34M-10.8 Strip Blade	39361	0.4252	10.8	-
K34M-10.9 Strip Blade	39362	0.4291	10.9	-
K34M-11.0 Strip Blade	28900	0.4331	11.0	-

C351 & C371 Series Blades

Used in the following *Kodera* machines:

Casting C351 | Casting C371



Casting 351 and 371 Full Radius Blades

Mechtrix Description	Mechtrix Part Number	Blade Form (in)	Diameter (mm)	OEM Part Number
K34-0.4D Strip Blade	27504	0.0158	0.4	-
K34-0.5D Strip Blade	27503	0.0197	0.5	-
K34-0.6D Strip Blade	23879	0.0236	0.6	-
K34-0.7D Strip Blade	20093	0.0276	0.7	-
K34-0.8D Strip Blade	23880	0.0315	0.8	-
K34-0.9D Strip Blade	18054	0.0354	0.9	-
K34-1.0D Strip Blade	39363	0.0394	1.0	-
K34-1.1D Strip Blade	17872	0.0433	1.1	-
K34-1.2D Strip Blade	24327	0.0472	1.2	-
K34-1.3D Strip Blade	18451	0.0512	1.3	-
K34-1.4D Strip Blade	39364	0.0551	1.4	-
K34-1.5D Strip Blade	18059	0.0591	1.5	-
K34-1.6D Strip Blade	34858	0.0630	1.6	-
K34-1.7D Strip Blade	39365	0.0669	1.7	-
K34-1.8D Strip Blade	17338	0.0709	1.8	-
K34-1.9D Strip Blade	17391	0.0748	1.9	-
K34-2.0D Strip Blade	19613	0.0787	2.0	-
K34-2.1D Strip Blade	39366	0.0827	2.1	-
K34-2.2D Strip Blade	21814	0.0866	2.2	-
K34-2.3D Strip Blade	18780	0.0906	2.3	-
K34-2.4D Strip Blade	18579	0.0945	2.4	-
K34-2.5D Strip Blade	39367	0.0984	2.5	-
K34-2.6D Strip Blade	39368	0.1024	2.6	-
K34-2.7D Strip Blade	39369	0.1063	2.7	-
K34-2.8D Strip Blade	18987	0.1102	2.8	-
K34-2.9D Strip Blade	17339	0.1142	2.9	-
K34-3.0D Strip Blade	24272	0.1181	3.0	-
K34-3.1D Strip Blade	36893	0.1221	3.1	-
K34-3.2D Strip Blade	23243	0.1260	3.2	-
K34-3.3D Strip Blade	39370	0.1299	3.3	-
K34-3.4D Strip Blade	39371	0.1339	3.4	-
K34-3.5D Strip Blade	39372	0.1378	3.5	-
K34-3.6D Strip Blade	17623	0.1417	3.6	-
K34-3.7D Strip Blade	27035	0.1457	3.7	-
K34-3.8D Strip Blade	16719	0.1496	3.8	-
K34-3.9D Strip Blade	20101	0.1535	3.9	-
K34-4.0D Strip Blade	29777	0.1575	4.0	-
K34-4.1D Strip Blade	39373	0.1614	4.1	-
K34-4.2D Strip Blade	29230	0.1654	4.2	-
K34-4.3D Strip Blade	39374	0.1693	4.3	-
K34-4.4D Strip Blade	18925	0.1732	4.4	-
K34-4.5D Strip Blade	39375	0.1772	4.5	-
K34-4.6D Strip Blade	17968	0.1811	4.6	-
K34-4.7D Strip Blade	39376	0.1850	4.7	-
K34-4.8D Strip Blade	16591	0.1890	4.8	-
K34-4.9D Strip Blade	23733	0.1929	4.9	-
K34-5.0D Strip Blade	16720	0.1969	5.0	-

Continued on Next Page

C351 & C371 Series Blades

Used in the following *Kodera* machines:

Casting C351 | Casting C371



Casting 351 and 371 Full Radius Blades (continued)

Mechtrix Description	Mechtrix Part Number	Blade Form (in)	Diameter (mm)	OEM Part Number
K34-5.1D Strip Blade	16722	0.2008	5.1	-
K34-5.2D Strip Blade	39377	0.2047	5.2	-
K34-5.3D Strip Blade	39378	0.2087	5.3	-
K34-5.4D Strip Blade	39379	0.2126	5.4	-
K34-5.5D Strip Blade	39380	0.2165	5.5	-
K34-5.6D Strip Blade	39381	0.2205	5.6	-
K34-5.7D Strip Blade	39382	0.2244	5.7	-
K34-5.8D Strip Blade	39383	0.2284	5.8	-
K34-5.9D Strip Blade	39384	0.2323	5.9	-
K34-6.0D Strip Blade	29778	0.2362	6.0	-
K34-6.1D Strip Blade	39385	0.2402	6.1	-
K34-6.2D Strip Blade	39386	0.2441	6.2	-
K34-6.3D Strip Blade	16592	0.2480	6.3	-
K34-6.4D Strip Blade	39387	0.2520	6.4	-
K34-6.5D Strip Blade	39388	0.2559	6.5	-
K34-6.6D Strip Blade	39389	0.2598	6.6	-
K34-6.7D Strip Blade	39390	0.2638	6.7	-
K34-6.8D Strip Blade	26979	0.2677	6.8	-
K34-6.9D Strip Blade	39391	0.2717	6.9	-
K34-7.0D Strip Blade	39392	0.2756	7.0	-
K34-7.1D Strip Blade	39393	0.2795	7.1	-
K34-7.2D Strip Blade	39394	0.2835	7.2	-
K34-7.3D Strip Blade	39395	0.2874	7.3	-
K34-7.4D Strip Blade	39396	0.2913	7.4	-
K34-7.5D Strip Blade	39397	0.2953	7.5	-
K34-7.6D Strip Blade	39398	0.2992	7.6	-
K34-7.7D Strip Blade	39399	0.3031	7.7	-
K34-7.8D Strip Blade	39400	0.3071	7.8	-
K34-7.9D Strip Blade	39401	0.3110	7.9	-
K34-8.0D Strip Blade	39402	0.3150	8.0	-
K34-8.1D Strip Blade	39403	0.3189	8.1	-
K34-8.2D Strip Blade	39404	0.3228	8.2	-
K34-8.3D Strip Blade	39405	0.3268	8.3	-
K34-8.4D Strip Blade	39406	0.3307	8.4	-
K34-8.5D Strip Blade	39407	0.3346	8.5	-
K34-8.6D Strip Blade	39408	0.3386	8.6	-
K34-8.7D Strip Blade	39409	0.3425	8.7	-
K34-8.8D Strip Blade	39410	0.3465	8.8	-
K34-8.9D Strip Blade	39411	0.3504	8.9	-
K34-9.0D Strip Blade	39412	0.3543	9.0	-
K34-9.1D Strip Blade	39413	0.3583	9.1	-
K34-9.2D Strip Blade	39414	0.3622	9.2	-
K34-9.3D Strip Blade	39415	0.3661	9.3	-
K34-9.4D Strip Blade	39416	0.3701	9.4	-
K34-9.5D Strip Blade	39417	0.3740	9.5	-

Continued on Next Page

C351 & C371 Series Blades

Used in the following *Kodera* machines:

Casting C351 | Casting C371



Casting 351 and 371 Full Radius Blades (continued)

Mechtrix Description	Mechtrix Part Number	Blade Form Diameter (in)	Diameter (mm)	OEM Part Number
K34-9.6D Strip Blade	39418	0.3780	9.6	-
K34-9.7D Strip Blade	39419	0.3819	9.7	-
K34-9.8D Strip Blade	39420	0.3858	9.8	-
K34-9.9D Strip Blade	39421	0.3898	9.9	-
K34-10.0D Strip Blade	39422	0.3937	10.0	-
K34-10.1D Strip Blade	39423	0.3976	10.1	-
K34-10.2D Strip Blade	39424	0.4016	10.2	-
K34-10.3D Strip Blade	39425	0.4055	10.3	-
K34-10.4D Strip Blade	39426	0.4094	10.4	-
K34-10.5D Strip Blade	39427	0.4134	10.5	-
K34-10.6D Strip Blade	39428	0.4173	10.6	-
K34-10.7D Strip Blade	39429	0.4213	10.7	-
K34-10.8D Strip Blade	39430	0.4252	10.8	-
K34-10.9D Strip Blade	39431	0.4291	10.9	-
K34-11.0D Strip Blade	39432	0.4331	11.0	-