

C350 & C370 Series Blades

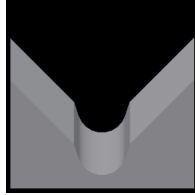
Used in the following *Kodera* machines:

Casting C350 | Casting C370

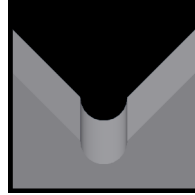
Available C350 & C370 Blade Form Geometries Include:



Universal



M-Series®



Full-Radius



Casting C350 and C370 Universal Blades

Mechtrix Description	Mechtrix Part Number	Blade Form Diameter (in)	Blade Form Diameter (mm)	OEM Part Number
KL33/35 (D2) Universal-Long (S4)	01612-02	-	-	
KL33/35 (C15) Universal-Long (S7) (Ultra Hard)	01612-01	-	-	07-312-A0 07-312-B0



Castugnon C350 and C370 M-Series® Blades

Mechtrix Description	Mechtrix Part Number	Blade Form Diameter (in)	Blade Form Diameter (mm)	OEM Part Number
K33/35M-0.3L Strip Blade Long	16958	0.0118	0.3	-
K33/35M-0.4L Strip Blade Long	15704	0.0158	0.4	-
K33/35M-0.5L Strip Blade Long	15605	0.0197	0.5	-
K33/35M-0.6L Strip Blade Long	19980	0.0236	0.6	-
K33/35M-0.7L Strip Blade Long	10449	0.0276	0.7	-
K33/35M-0.8L Strip Blade Long	16892	0.0315	0.8	-
K33/35M-0.9L Strip Blade Long	24175	0.0354	0.9	-
K33/35M-1.0L Strip Blade Long	15647	0.0394	1.0	-
K33/35M-1.1L Strip Blade Long	15535	0.0433	1.1	-
K33/35M-1.2L Strip Blade Long	15649	0.0472	1.2	-
K33/35M-1.3L Strip Blade Long	18418	0.0512	1.3	-
K33/35M-1.4L Strip Blade Long	14625	0.0551	1.4	-
K33/35M-1.5L Strip Blade Long	18783	0.0591	1.5	-
K33/35M-1.6L Strip Blade Long	9517	0.0630	1.6	-
K33/35M-1.7L Strip Blade Long	39184	0.0669	1.7	-
K33/35M-1.8L Strip Blade Long	25599	0.0709	1.8	-
K33/35M-1.9L Strip Blade Long	21432	0.0748	1.9	-
K33/35M-2.0L Strip Blade Long	16190	0.0787	2.0	-
K33/35M-2.1L Strip Blade Long	16335	0.0827	2.1	-
K33/35M-2.2L Strip Blade Long	25600	0.0866	2.2	-
K33/35M-2.3L Strip Blade Long	36472	0.0906	2.3	-
K33/35M-2.4L Strip Blade Long	11565	0.0945	2.4	-
K33/35M-2.5L Strip Blade Long	34417	0.0984	2.5	-
K33/35M-2.6L Strip Blade Long	39190	0.1024	2.6	-
K33/35M-2.7L Strip Blade Long	18570	0.1063	2.7	-
K33/35M-2.8L Strip Blade Long	18572	0.1102	2.8	-
K33/35M-2.9L Strip Blade Long	39192	0.1142	2.9	-
K33/35M-3.0L Strip Blade Long	39194	0.1181	3.0	-

Continued on Next Page

C350 & C370 Series Blades

Used in the following *Kodera* machines:

Casting C350 | Casting C370



Casting C350 & C370 M-Series® Blades (continued)

Mechtrix Description	Mechtrix Part Number	Blade Form Diameter (in)	Blade Form Diameter (mm)	OEM Part Number
K33/35M-3.1L Strip Blade Long	21763	0.1221	3.1	-
K33/35M-3.2L Strip Blade Long	39197	0.1260	3.2	-
K33/35M-3.3L Strip Blade Long	35690	0.1299	3.3	-
K33/35M-3.4L Strip Blade Long	22795	0.1339	3.4	-
K33/35M-3.5L Strip Blade Long	39199	0.1378	3.5	-
K33/35M-3.6L Strip Blade Long	9355	0.1417	3.6	-
K33/35M-3.7L Strip Blade Long	39201	0.1457	3.7	-
K33/35M-3.8L Strip Blade Long	23607	0.1496	3.8	-
K33/35M-3.9L Strip Blade Long	39204	0.1535	3.9	-
K33/35M-4.0L Strip Blade Long	39206	0.1575	4.0	-
K33/35M-4.1L Strip Blade Long	39208	0.1614	4.1	-
K33/35M-4.2L Strip Blade Long	39210	0.1654	4.2	-
K33/35M-4.3L Strip Blade Long	18372	0.1693	4.3	-
K33/35M-4.4L Strip Blade Long	39212	0.1732	4.4	-
K33/35M-4.5L Strip Blade Long	39214	0.1772	4.5	-
K33/35M-4.6L Strip Blade Long	39216	0.1811	4.6	-
K33/35M-4.7L Strip Blade Long	39218	0.1850	4.7	-
K33/35M-4.8L Strip Blade Long	39220	0.1890	4.8	-
K33/35M-4.9L Strip Blade Long	39222	0.1929	4.9	-
K33/35M-5.0L Strip Blade Long	39224	0.1969	5.0	-
K33/35M-5.1L Strip Blade Long	39226	0.2008	5.1	-
K33/35M-5.2L Strip Blade Long	39228	0.2047	5.2	-
K33/35M-5.3L Strip Blade Long	39230	0.2087	5.3	-
K33/35M-5.4L Strip Blade Long	39232	0.2126	5.4	-
K33/35M-5.5L Strip Blade Long	39234	0.2165	5.5	-
K33/35M-5.6L Strip Blade Long	39236	0.2205	5.6	-
K33/35M-5.7L Strip Blade Long	39238	0.2244	5.7	-
K33/35M-5.8L Strip Blade Long	39240	0.2284	5.8	-
K33/35M-5.9L Strip Blade Long	39242	0.2323	5.9	-
K33/35M-6.0L Strip Blade Long	39244	0.2362	6.0	-



Castugnon C350 and C370 Full Radius Blades

Mechtrix Description	Mechtrix Part Number	Blade Form Diameter (in)	Blade Form Diameter (mm)	OEM Part Number
K33/35-0.4DL Strip Blade Long	17624	0.0158	0.4	-
K33/35-0.5DL Strip Blade Long	16774	0.0197	0.5	-
K33/35-0.6DL Strip Blade Long	17870	0.0236	0.6	-
K33/35-0.7DL Strip Blade Long	11059	0.0276	0.7	-
K33/35-0.8DL Strip Blade Long	18102	0.0315	0.8	-
K33/35-0.9DL Strip Blade Long	18157	0.0354	0.9	-
K33/35-1.0DL Strip Blade Long	13465	0.0394	1.0	-
K33/35-1.1DL Strip Blade Long	18180	0.0433	1.1	-
K33/35-1.2DL Strip Blade Long	39247	0.0472	1.2	-
K33/35-1.3DL Strip Blade Long	14287	0.0512	1.3	-
K33/35-1.4DL Strip Blade Long	32472	0.0551	1.4	-

[Continued on Next Page](#)

C350 & C370 Series Blades

Used in the following *Kodera* machines:

Casting C350 | Casting C370



Casting C350 & C370 Full Radius Blades (continued)

Mechtrix Description	Mechtrix Part Number	Blade Form (in)	Diameter (mm)	OEM Part Number
K33/35-1.5DL Strip Blade Long	17621	0.0591	1.5	-
K33/35-1.6DL Strip Blade Long	35469	0.0630	1.6	-
K33/35-1.7DL Strip Blade Long	34210	0.0669	1.7	-
K33/35-1.8DL Strip Blade Long	17641	0.0709	1.8	-
K33/35-1.9DL Strip Blade Long	39251	0.0748	1.9	-
K33/35-2.0DL Strip Blade Long	35952	0.0787	2.0	-
K33/35-2.1DL Strip Blade Long	35471	0.0827	2.1	-
K33/35-2.2DL Strip Blade Long	39254	0.0866	2.2	-
K33/35-2.3DL Strip Blade Long	39256	0.0906	2.3	-
K33/35-2.4DL Strip Blade Long	39258	0.0945	2.4	-
K33/35-2.5DL Strip Blade Long	39260	0.0984	2.5	-
K33/35-2.6DL Strip Blade Long	39262	0.1024	2.6	-
K33/35-2.7DL Strip Blade Long	39264	0.1063	2.7	-
K33/35-2.8DL Strip Blade Long	39266	0.1102	2.8	-
K33/35-2.9DL Strip Blade Long	39268	0.1142	2.9	-
K33/35-3.0DL Strip Blade Long	39270	0.1181	3.0	-
K33/35-3.1DL Strip Blade Long	39272	0.1221	3.1	-
K33/35-3.2DL Strip Blade Long	39274	0.1260	3.2	-
K33/35-3.3DL Strip Blade Long	39276	0.1299	3.3	-
K33/35-3.4DL Strip Blade Long	35146	0.1339	3.4	-
K33/35-3.5DL Strip Blade Long	39279	0.1378	3.5	-
K33/35-3.6DL Strip Blade Long	39281	0.1417	3.6	-
K33/35-3.7DL Strip Blade Long	39283	0.1457	3.7	-
K33/35-3.8DL Strip Blade Long	39285	0.1496	3.8	-
K33/35-3.9DL Strip Blade Long	39287	0.1535	3.9	-
K33/35-4.0DL Strip Blade Long	39289	0.1575	4.0	-
K33/35-4.1DL Strip Blade Long	39291	0.1614	4.1	-
K33/35-4.2DL Strip Blade Long	39293	0.1654	4.2	-
K33/35-4.3DL Strip Blade Long	18367	0.1693	4.3	-
K33/35-4.4DL Strip Blade Long	39295	0.1732	4.4	-
K33/35-4.5DL Strip Blade Long	39297	0.1772	4.5	-
K33/35-4.6DL Strip Blade Long	39299	0.1811	4.6	-
K33/35-4.7DL Strip Blade Long	39301	0.1850	4.7	-
K33/35-4.8DL Strip Blade Long	39303	0.1890	4.8	-
K33/35-4.9DL Strip Blade Long	39305	0.1929	4.9	-
K33/35-5.0DL Strip Blade Long	39307	0.1969	5.0	-
K33/35-5.1DL Strip Blade Long	39308	0.2008	5.1	-
K33/35-5.2DL Strip Blade Long	39310	0.2047	5.2	-
K33/35-5.3DL Strip Blade Long	39312	0.2087	5.3	-
K33/35-5.4DL Strip Blade Long	39314	0.2126	5.4	-
K33/35-5.5DL Strip Blade Long	39316	0.2165	5.5	-
K33/35-5.6DL Strip Blade Long	39318	0.2205	5.6	-
K33/35-5.7DL Strip Blade Long	39320	0.2244	5.7	-
K33/35-5.8DL Strip Blade Long	39322	0.2284	5.8	-
K33/35-5.9DL Strip Blade Long	39324	0.2323	5.9	-
K33/35-6.0DL Strip Blade Long	39326	0.2362	6.0	-