

C301 Series Blades

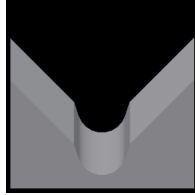
Used in the following *Kodera* machines:

Casting 301

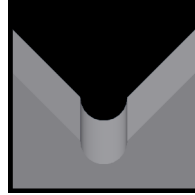
Available Casting 301 Blade Form Geometries Include:



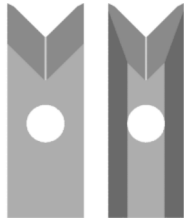
Universal



M-Series®

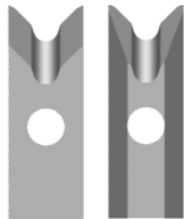


Full-Radius



Casting C301 Universal Blades

Mechtrix Description	Mechtrix Part Number	Blade Form Diameter (in)	Blade Form Diameter (mm)	OEM Part Number
C301UV Universal Strip Blade-Front	30704	-	-	-
C301UV Universal Strip Blade-Back	30705	-	-	-



Casting C301 M-Series® Blades

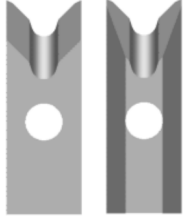
Mechtrix Description	Mechtrix Part Number	Blade Form Diameter (in)	Blade Form Diameter (mm)	OEM Part Number
C301M-0.3 Strip Blade Front	39803	0.0118	0.3	-
C301M-0.3 Strip Blade Back	39804	0.0118	0.3	-
C301M-0.4 Strip Blade Front	30706	0.0158	0.4	-
C301M-0.4 Strip Blade Back	30707	0.0158	0.4	-
C301M-0.5 Strip Blade Front	30708	0.0197	0.5	-
C301M-0.5 Strip Blade Back	30709	0.0197	0.5	-
C301M-0.6 Strip Blade Front	39805	0.0236	0.6	-
C301M-0.6 Strip Blade Back	39806	0.0236	0.6	-
C301M-0.7 Strip Blade Front	39807	0.0276	0.7	-
C301M-0.7 Strip Blade Back	39808	0.0276	0.1	-
C301M-0.8 Strip Blade Front	39809	0.0315	0.8	-
C301M-0.8 Strip Blade Back	39810	0.0315	0.8	-
C301M-0.9 Strip Blade Front	39811	0.0354	0.9	-
C301M-0.9 Strip Blade Back	39812	0.0354	0.9	-
C301M-1.0 Strip Blade Front	39813	0.0394	1.0	-
C301M-1.0 Strip Blade Back	39814	0.0394	1.0	-
C301M-1.1 Strip Blade Front	39815	0.0433	1.1	-
C301M-1.1 Strip Blade Back	39816	0.0433	1.1	-
C301M-1.2 Strip Blade Front	39817	0.0472	1.2	-
C301M-1.2 Strip Blade Back	39818	0.0472	1.2	-
C301M-1.3 Strip Blade Front	39819	0.0512	1.3	-
C301M-1.3 Strip Blade Back	39820	0.0512	1.3	-
C301M-1.4 Strip Blade Front	39821	0.0551	1.4	-
C301M-1.4 Strip Blade Back	39822	0.0551	1.4	-
C301M-1.5 Strip Blade Front	39823	0.0591	1.5	-
C301M-1.5 Strip Blade Back	39824	0.0591	1.5	-
C301M-1.6 Strip Blade Front	39825	0.0630	1.6	-
C301M-1.6 Strip Blade Back	39826	0.0630	1.6	-
C301M-1.7 Strip Blade Front	39827	0.0669	1.7	-
C301M-1.7 Strip Blade Back	39828	0.0699	1.7	-

Continued on Next Page

C301 Series Blades

Used in the following *Kodera* machines:

Casting 301



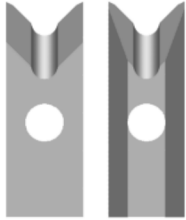
Casting C301 M-Series® Blades (continued)

Mechtrix Description	Mechtrix Part Number	Blade Form Diameter (in)	Blade Form Diameter (mm)	OEM Part Number
C301M-1.8 Strip Blade Front	39829	0.0709	1.8	-
C301M-1.8 Strip Blade Back	39830	0.0709	1.8	-
C301M-1.9 Strip Blade Front	39831	0.0748	1.9	-
C301M-1.9 Strip Blade Back	39832	0.0748	1.9	-
C301M-2.0 Strip Blade Front	39833	0.0787	2.0	-
C301M-2.0 Strip Blade Back	39834	0.0787	2.0	-
C301M-2.1 Strip Blade Front	39835	0.0827	2.1	-
C301M-2.1 Strip Blade Back	39836	0.0827	2.1	-
C301M-2.2 Strip Blade Front	39837	0.0866	2.2	-
C301M-2.2 Strip Blade Back	39838	0.0866	2.2	-
C301M-2.3 Strip Blade Front	39839	0.0906	2.3	-
C301M-2.3 Strip Blade Back	39840	0.0906	2.3	-
C301M-2.4 Strip Blade Front	39841	0.0945	2.4	-
C301M-2.4 Strip Blade Back	39842	0.0945	2.4	-
C301M-2.5 Strip Blade Front	39843	0.0984	2.5	-
C301M-2.5 Strip Blade Back	39844	0.0984	2.5	-
C301M-2.6 Strip Blade Front	39845	0.1024	2.6	-
C301M-2.6 Strip Blade Back	39846	0.1024	2.6	-
C301M-2.7 Strip Blade Front	39847	0.1063	2.7	-
C301M-2.7 Strip Blade Back	39848	0.1063	2.7	-
C301M-2.8 Strip Blade Front	39849	0.1102	2.8	-
C301M-2.8 Strip Blade Back	39850	0.1102	2.8	-
C301M-2.9 Strip Blade Front	39851	0.1142	2.9	-
C301M-2.9 Strip Blade Back	39852	0.1142	2.9	-
C301M-3.0 Strip Blade Front	39853	0.1181	3.0	-
C301M-3.0 Strip Blade Back	39854	0.1181	3.0	-

C301 Series Blades

Used in the following *Kodera* machines:

Casting 301



Casting C301 Full Radius Blades

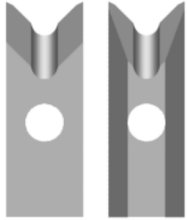
Mechtrix Description	Mechtrix Part Number	Blade Form Diameter		OEM Part Number
		(in)	(mm)	
C301-0.3D Strip Blade Front	39855	0.0118	0.3	-
C301-0.3D Strip Blade Back	39856	0.0118	0.3	-
C301-0.4D Strip Blade Front	39857	0.0158	0.4	-
C301-0.4D Strip Blade Back	39858	0.0158	0.4	-
C301-0.5D Strip Blade Front	39859	0.0197	0.5	-
C301-0.5D Strip Blade Back	39860	0.0197	0.5	-
C301-0.6D Strip Blade Front	39861	0.0236	0.6	-
C301-0.6D Strip Blade Back	39862	0.0236	0.6	-
C301-0.7D Strip Blade Front	39863	0.0276	0.7	-
C301-0.7D Strip Blade Back	39864	0.0276	0.1	-
C301-0.8D Strip Blade Front	39865	0.0315	0.8	-
C301-0.8D Strip Blade Back	39866	0.0315	0.8	-
C301-0.9D Strip Blade Front	39867	0.0354	0.9	-
C301-0.9D Strip Blade Back	39868	0.0354	0.9	-
C301-1.0D Strip Blade Front	39869	0.0394	1.0	-
C301-1.0D Strip Blade Back	39870	0.0394	1.0	-
C301-1.1D Strip Blade Front	39871	0.0433	1.1	-
C301-1.1D Strip Blade Back	39872	0.0433	1.1	-
C301-1.2D Strip Blade Front	39873	0.0472	1.2	-
C301-1.2D Strip Blade Back	39874	0.0472	1.2	-
C301-1.3D Strip Blade Front	39875	0.0512	1.3	-
C301-1.3D Strip Blade Back	39876	0.0512	1.3	-
C301-1.4D Strip Blade Front	39877	0.0551	1.4	-
C301-1.4D Strip Blade Back	39878	0.0551	1.4	-
C301-1.5D Strip Blade Front	39879	0.0591	1.5	-
C301-1.5D Strip Blade Back	39880	0.0591	1.5	-
C301-1.6D Strip Blade Front	39881	0.0630	1.6	-
C301-1.6D Strip Blade Back	39882	0.0630	1.6	-
C301-1.7D Strip Blade Front	39883	0.0669	1.7	-
C301-1.7D Strip Blade Back	39884	0.0699	1.7	-
C301-1.8D Strip Blade Front	39885	0.0709	1.8	-
C301-1.8D Strip Blade Back	39886	0.0709	1.8	-
C301-1.9D Strip Blade Front	39887	0.0748	1.9	-
C301-1.9D Strip Blade Back	39888	0.0748	1.9	-
C301-2.0D Strip Blade Front	39889	0.0787	2.0	-
C301-2.0D Strip Blade Back	39890	0.0787	2.0	-
C301-2.1D Strip Blade Front	39891	0.0827	2.1	-
C301-2.1D Strip Blade Back	39892	0.0827	2.1	-
C301-2.2D Strip Blade Front	39893	0.0866	2.2	-
C301-2.2D Strip Blade Back	39894	0.0866	2.2	-
C301-2.3D Strip Blade Front	39895	0.0906	2.3	-
C301-2.3D Strip Blade Back	39896	0.0906	2.3	-
C301-2.4D Strip Blade Front	39897	0.0945	2.4	-
C301-2.4D Strip Blade Back	39898	0.0945	2.4	-
C301-2.5D Strip Blade Front	39899	0.0984	2.5	-
C301-2.5D Strip Blade Back	39900	0.0984	2.5	-

Continued on Next Page

C301 Series Blades

Used in the following *Kodera* machines:

Casting 301



Casting C301 Full Radius Blades (continued)

Mechtrix Description	Mechtrix Part Number	Blade Form Diameter		OEM Part Number
		(in)	(mm)	
C301-2.6D Strip Blade Front	39901	0.1024	2.6	-
C301-2.6D Strip Blade Back	39902	0.0102	2.6	-
C301-2.7D Strip Blade Front	39903	0.1063	2.7	-
C301-2.7D Strip Blade Back	39904	0.1063	2.7	-
C301-2.8D Strip Blade Front	39905	0.1102	2.8	-
C301-2.8D Strip Blade Back	39906	0.1102	2.8	-
C301-2.9D Strip Blade Front	39907	0.1142	2.9	-
C301-2.9D Strip Blade Back	39908	0.1142	2.9	-
C301-3.0D Strip Blade Front	39909	0.1181	3.0	-
C301-3.0D Strip Blade Back	39910	0.1181	3.0	-