

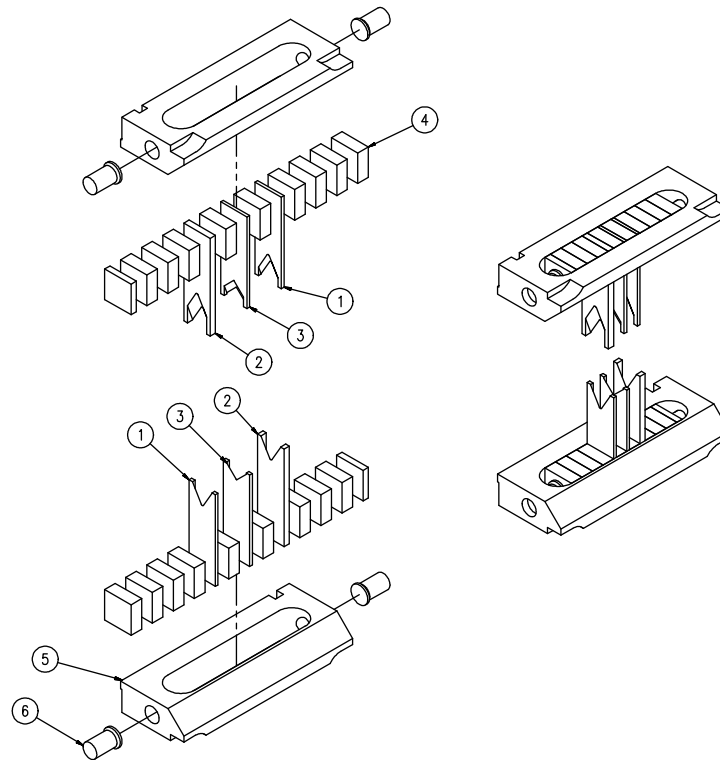
# Artos Standard Series Blades

Used in the following Artos, AMP, & Kut-Rite machines:

Artos: CS series | TA-20 | S-1 | Amp: CLS series | Kut-Rite: MCS series | BTS series



## Single "V" Tooling Setup



No.	Part Description	Qty.	No.	Part Description	Qty.
1	"V" Strip Blade-Short	2	5	Artos 4" Toolholder	2
2	"V" Strip Blade-Long	2	6	Mechtrix Endscrew/Washer Assembly	4
3	Cut-off Blade	2			
4	Spacers	-			

## Mechtrix Single "V" Series Cut-Off Blade

Mechtrix Description	Mechtrix Part Number	Blade Form (in)	Diameter (mm)	OEM Part Number
MCL Cut-off Blade	01393	-	-	C-2681-09
CL Cut-off Blade	00022	-	-	C-2681-02
CLA Cut-off Blade	00024	-	-	C-2681-01

# Artos Standard Series Blades

Used in the following Artos, AMP, & Kut-Rite machines:

Artos: CS series | TA-20 | S-1 | Amp: CLS series | Kut-Rite: MCS series | BTS series



## Mechtrix Single "V" Series Stripping Blades

Mechtrix Description	Mechtrix Part Number	Blade Form (in)	Diameter (mm)	OEM Part Number
V-012S Strip Blade-Short	12753	0.01200	0.30	86777-21
V-012L Strip Blade-Long	12752			86777-22
V-022S Strip Blade-Short	12755	0.02200	0.56	86777-19
V-022L Strip Blade-Long	12754			86777-20
V-034S Strip Blade-Short (replaces V-32)	14218	0.03400	0.86	86777-1
V-034L Strip Blade-Long (replaces V-32L)	14219			86777-2
V-042S Strip Blade-Short	12757	0.04200	1.07	86777-3
V-042L Strip Blade-Long	12756			86777-4
V-052S Strip Blade-Short	12759	0.05200	1.32	86777-5
V-052L Strip Blade-Long	12758			86777-6
V-062S Strip Blade-Short (replaces V-16)	14222	0.06200	1.57	86777-7
V-062L Strip Blade-Long (replaces V-16L)	14223			86777-8
V-076S Strip Blade-Short	12761	0.07600	1.93	86777-9
V-076L Strip Blade-Long	12760			86777-10
V-096S Strip Blade-Short (replaces V-332)	14220	0.09600	2.44	86777-11
V-096L Strip Blade-Long (replaces V-332L)	14221			86777-12
V-112S Strip Blade-Short	12725	0.11200	2.84	86777-13
V-112L Strip Blade-Long	12724			86777-14
V-125S Strip Blade-Short (replaces V-8)	00228	0.12500	3.18	-
V-125L Strip Blade-Long (replaces V-8L)	00218			-
V-156A Strip Blade-Short (replaces V-532A)	00230	0.15625	3.97	-
V-156L Strip Blade-Long (replaces V-532L)	00219			-
V-172A Strip Blade-Short	15925	0.17200	4.37	86777-15
V-172L Strip Blade-Long	12762			86777-16
V-187A Strip Blade-Short (replaces V-316A)	00231	0.18750	4.76	-
V-187L Strip Blade-Long (replaces V-316L)	00220			-
V-222A Strip Blade-Short (replaces V-732A)	14224	0.22200	5.64	86777-17
V-222L Strip Blade-Long (replaces V-732L)	14225			86777-18
V-250A Strip Blade-Short (replaces V-4A)	00232	0.25000	6.35	-
V-250L Strip Blade-Long (replaces V-4L)	00221			-

# Artos Standard Series Blades



Used in the following Artos, AMP, & Kut-Rite machines:

**Artos:** CS series | TA-20 | S-1 | **Amp:** CLS series | **Kut-Rite:** MCS series | BTS series



## Mechtrix "WWV" Series Stripping Blades

Mechtrix Description		Mechtrix Part Number	Blade Form (in)	Diameter (mm)	OEM Part Number
WWV-281S Strip Blade-Short	(WWV-932)	05093	0.28125	7.14	-
WWV-281L Strip Blade-Long	(WWV-932L)	05092			-
WWV-312S Strip Blade-Short	(WWV-516)	05095	0.31250	7.94	-
WWV-312L Strip Blade-Long	(WWV-516L)	05094			-
WWV-343S Strip Blade-Short	(WWV-1132)	05097	0.34375	8.73	-
WWV-343L Strip Blade-Long	(WWV-1132L)	05096			-
WWV-375S Strip Blade-Short	(WWV-38)	05099	0.37520	9.53	-
WWV-375L Strip Blade-Long	(WWV-38L)	05098			-
WWV-406S Strip Blade-Short	(WWV-1332)	05153	0.40625	10.32	-
WWV-406L Strip Blade-Long	(WWV-1332L)	05152			-
WWV-437S Strip Blade-Short	(WWV-716)	05155	0.43750	11.11	-
WWV-437L Strip Blade-Long	(WWV-716L)	05154			-
WWV-468S Strip Blade-Short	(WWV-1532)	05157	0.46875	11.91	-
WWV-468L Strip Blade-Long	(WWV-1532L)	05156			-
WWV-500S Strip Blade-Short	(WWV-12)	05159	0.50000	12.70	-
WWV-500L Strip Blade-Long	(WWV-12L)	05158			-
WWV-531S Strip Blade-Short	(WWV-1732)	05161	0.53125	13.49	-
WWV-531L Strip Blade-Long	(WWV-1732L)	05160			-
WWV-562S Strip Blade-Short	(WWV-916)	05163	0.56250	14.29	-
WWV-562L Strip Blade-Long	(WWV-916L)	05162			-
WWV-593S Strip Blade-Short	(WWV-1932)	05165	0.59375	15.08	-
WWV-593L Strip Blade-Long	(WWV-1932L)	05164			-
WWV-625S Strip Blade-Short	(WWV-58)	05167	0.62500	15.88	-
WWV-625L Strip Blade-Long	(WWV-58L)	05166			-

## Mechtrix "WWV" Series Cut-Off Blades

Mechtrix Description	Mechtrix Part Number	Blade Form (in)	Diameter (mm)	OEM Part Number
WWCL	05168	-	-	-

# Artos Standard Series Blades



Used in the following Artos, AMP, & Kut-Rite machines:

**Artos:** CS series | TA-20 | S-1 | **Amp:** CLS series | **Kut-Rite:** MCS series | BTS series



## Mechtrix "WV" Series Stripping Blades

Mechtrix Description		Mechtrix Part Number	Blade Form Diameter		OEM Part Number
			(in)	(mm)	
WV-281A Strip Blade-Short	(WV-932A)	00960	0.28125	7.14	-
WV-281L Strip Blade-Long	(WV-932L)	00959			-
WV-312A Strip Blade-Short	(WV-516A)	00963	0.31250	7.94	-
WV-312L Strip Blade-Long	(WV-516L)	00962			-
WV-343A Strip Blade-Short	(WV-1132A)	00966	0.34375	8.73	-
WV-343L Strip Blade-Long	(WV-1132L)	00965			-
WV-375A Strip Blade-Short	(WV-38A)	00969	0.37500	9.53	-
WV-375L Strip Blade-Long	(WV-38L)	00968			-
WV-406A Strip Blade-Short	(WV-1332A)	01362	0.40625	10.32	-
WV-406L Strip Blade-Long	(WV-1332L)	01361			-
WV-437A Strip Blade-Short	(WV-716A)	01365	0.43750	11.11	-
WV-437L Strip Blade-Long	(WV-716L)	01364			-
WV-468A Strip Blade-Short	(WV-1532A)	02375	0.46875	11.91	-
WV-468L Strip Blade-Long	(WV-1532L)	02374			-
WV-500A Strip Blade-Short	(WV-12A)	02371	0.50000	12.70	-
WV-500L Strip Blade-Long	(WV-12L)	02370			-
WV-531A Strip Blade-Short	(WV-1732A)	03564	0.53125	13.49	-
WV-531L Strip Blade-Long	(WV-1732L)	03565			-
WV-562A Strip Blade-Short	(WV-916A)	03566	0.56250	14.29	-
WV-562L Strip Blade-Long	(WV-916L)	03567			-
WV-593A Strip Blade-Short	(WV-1932A)	02311	0.59375	15.08	-
WV-593L Strip Blade-Long	(WV-1932L)	02310			-
WV-625A Strip Blade-Short	(WV-58A)	14569	0.62500	15.88	-
WV-625L Strip Blade-Long	(WV-58L)	14570			-

## Mechtrix "WV" Series Cut-Off Blades

Mechtrix Description	Mechtrix Part Number	Blade Form Diameter		OEM Part Number
		(in)	(mm)	
WCLA	02319	-	-	-

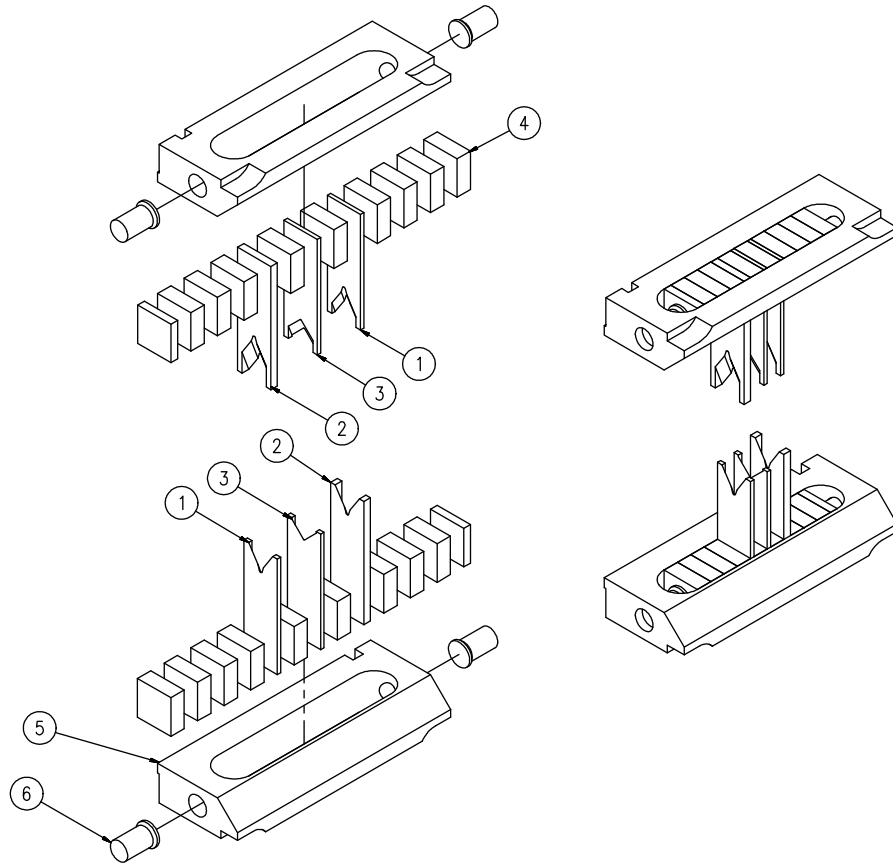
# Artos Standard Series Blades

Used in the following Artos, AMP, & Kut-Rite machines:

Artos: CS series | TA-20 | S-1 | Amp: CLS series | Kut-Rite: MCS series | BTS series



## "M" Series Tooling Setup



No.	Part Description	Qty.	No.	Part Description	Qty.
1	"M" Strip Blade-Short	2	5	Artos 4" Toolholder	2
2	"M" Strip Blade-Long	2	6	Mechtrix Endscrew/Washer Assembly	4
3	Cut-off Blade	2			
4	Spacers	-			

# Artos Standard Series Blades



Used in the following Artos, AMP, & Kut-Rite machines:

Artos: CS series | TA-20 | S-1 | Amp: CLS series | Kut-Rite: MCS series | BTS series



## "M" Series Stripping Blades

Mechtrix Description	Mechtrix Part Number	Blade Form (in)	Diameter (mm)	OEM Part Number
M-016 Strip Blade-Short	00343	0.01600	0.41	-
M-016L Strip Blade-Long	00342			-
M-020 Strip Blade-Short	01064	0.02000	0.51	-
M-020L Strip Blade-Long	01063			-
M-024 Strip Blade-Short	00269	0.02400	0.61	-
M-024L Strip Blade-Long	00268			-
M-028 Strip Blade-Short	01066	0.02800	0.71	-
M-028L Strip Blade-Long	01065			-
M-032 Strip Blade-Short	00410	0.03200	0.81	-
M-032L Strip Blade-Long	00409			-
M-040 Strip Blade-Short	01068	0.04000	1.02	-
M-040L Strip Blade-Long	01067			-
M-048 Strip Blade-Short	00413	0.04800	1.22	-
M-048L Strip Blade-Long	00412			-
M-054 Strip Blade-Short	01071	0.05400	1.37	-
M-054L Strip Blade-Long	01070			-
M-062 Strip Blade-Short	00416	0.06200	1.57	-
M-062L Strip Blade-Long	00415			-
M-070 Strip Blade-Short	01074	0.07000	1.78	-
M-070L Strip Blade-Long	01073			-
M-078 Strip Blade-Short	01144	0.07800	1.98	-
M-078L Strip Blade-Long	01143			-
M-086 Strip Blade-Short	01331	0.08600	2.18	-
M-086L Strip Blade-Long	01330			-
M-094 Strip Blade-Short	01334	0.09400	2.39	-
M-094L Strip Blade-Long	01333			-
M-102 Strip Blade-Short	01306	0.10200	2.59	-
M-102L Strip Blade-Long	01305			-
M-110 Strip Blade-Short	01482	0.11000	2.79	-
M-110L Strip Blade-Long	01481			-
M-118 Strip Blade-Short	01485	0.11800	3.00	-
M-118L Strip Blade-Long	01484			-
M-126 Strip Blade-Short	01488	0.12600	3.20	-
M-126L Strip Blade-Long	01487			-
M-134 Strip Blade-Short	01491	0.13400	3.40	-
M-134L Strip Blade-Long	01490			-
M-142 Strip Blade-Short	01494	0.14200	3.61	-
M-142L Strip Blade-Long	01493			-
M-150 Strip Blade-Short	01497	0.15000	3.81	-
M-150L Strip Blade-Long	01496			-
M-158 Strip Blade-Short	01500	0.15800	4.01	-
M-158L Strip Blade-Long	01499			-

## ID, IDQ, and WID Series Tooling

The Mechtrix complete line of **Interlocking Die-Type Stripping Blades** are a truly new concept in wire stripping and tooling . . . .

The unique, modular concept utilizes components which interlock to achieve the precise formation and alignment of two concentric holes—a stripping hole for the conductor and a guiding hole for the outer insulation. The stripping hole is formed by the ID Stripping Blades, the guiding hole is formed by the IDG Guide and the IDS Stop. These components interlock to form a rigid, single unit as they are closed on a wire.

ID Series Blades offer several features which distinguish them from the traditional die-type designs. **Specifically, the ID Series** . . . .

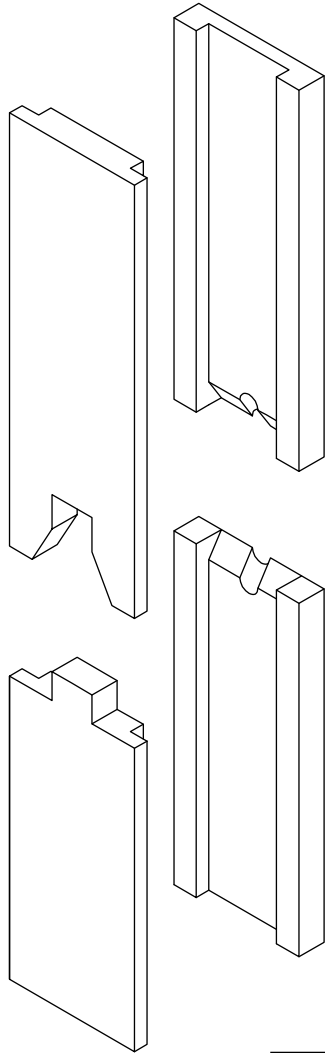
**Create perfectly round cutting forms** with a sharp edge around the entire periphery of the cutting area. This feature facilitates excellent cutting of the insulation around 360 degrees of the conductor and eliminates the *pinching effect* which is inherent to other die-type designs.

**Feature an interlocking IDG Guide and IDS Stop** which are sized to precisely define and equalize the penetration depth of the blade cutting edges into the insulation.

**Achieve significantly improved gathering** of the wire into the blade cutting form as a result of the unique IDG Guide design.

**Can achieve a minimum 0.125" strip** with standard cut-off tooling. Shorter strip lengths are achieved using special cut-off blades.

**Offer the flexibility** to use IDG Guides and IDS Stops with other ID Stripping Blades sizes, thus minimizing the long term cost of perishable tooling.



**IDQ Interlocking Die-Type Stripping Blades** are designed to be used with wires having a Measured Insulation Diameter (D) of less than 0.040" (1.02mm).

**ID Interlocking Die-Type Stripping Blades** are designed to be used with wires having a Measured Insulation Diameter (D) between 0.040" and 0.400" (1.02mm - 10.16mm).

**WID Interlocking Die-Type Stripping Blades** are designed to be used with wires having a Measured Insulation Diameter (D) between 0.401" and 0.625" (10.17mm - 15.88mm).

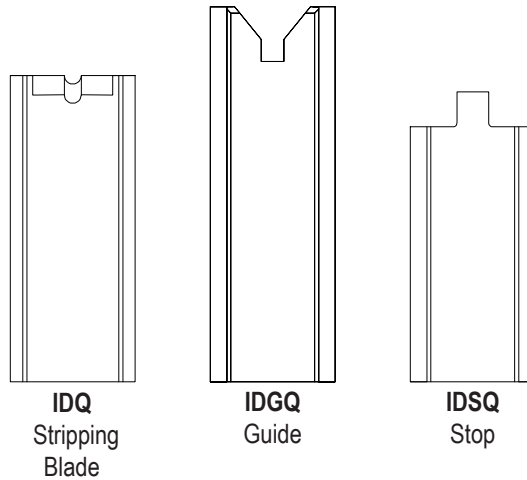
# Artos Standard Series Blades

Used in the following Artos, AMP, & Kut-Rite machines:

Artos: CS series | TA-20 | S-1 | Amp: CLS series | Kut-Rite: MCS series | BTS series

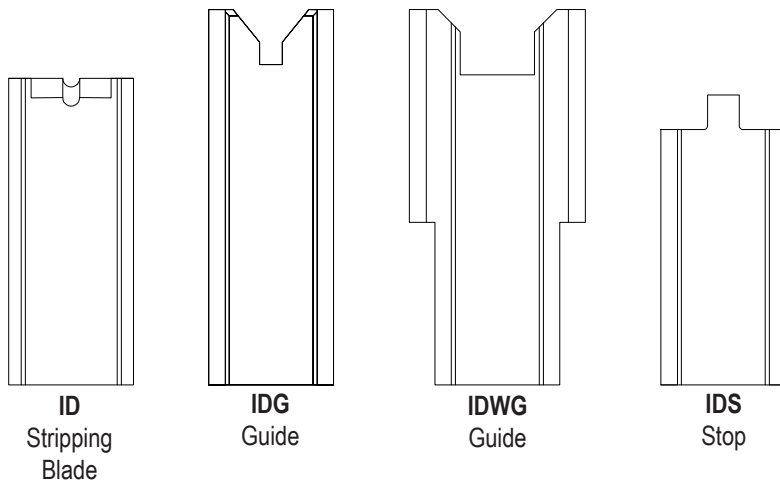
## IDQ Series Interlocking Die-Type Stripping Blades, Guides, and Stops

For wires with an Insulation Diameter (D) of up to 0.040" (1.02mm).



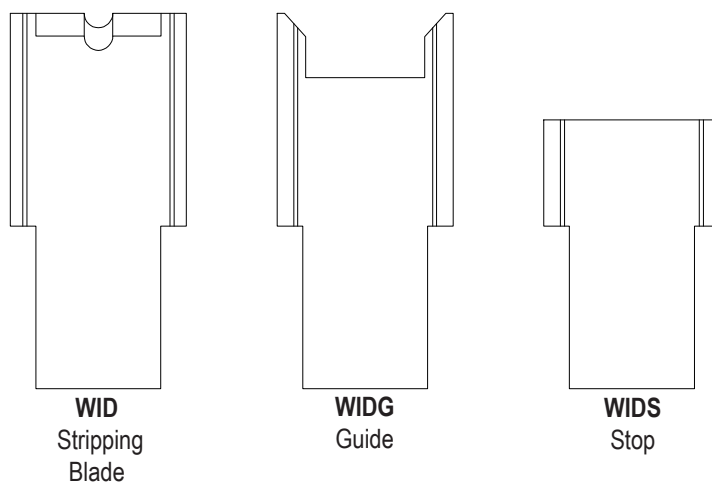
## ID Series Interlocking Die-Type Stripping Blades, Guides, and Stops

For wires with an Insulation Diameter (D) of 0.040 - 0.400" (1.02 - 10.16mm).



## WID Series Interlocking Die-Type Stripping Blades, Guides, and Stops

For wires with an Insulation Diameter (D) of: 0.401 - 0.625" (10.17 - 15.88mm).

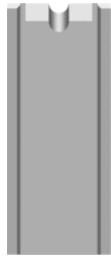




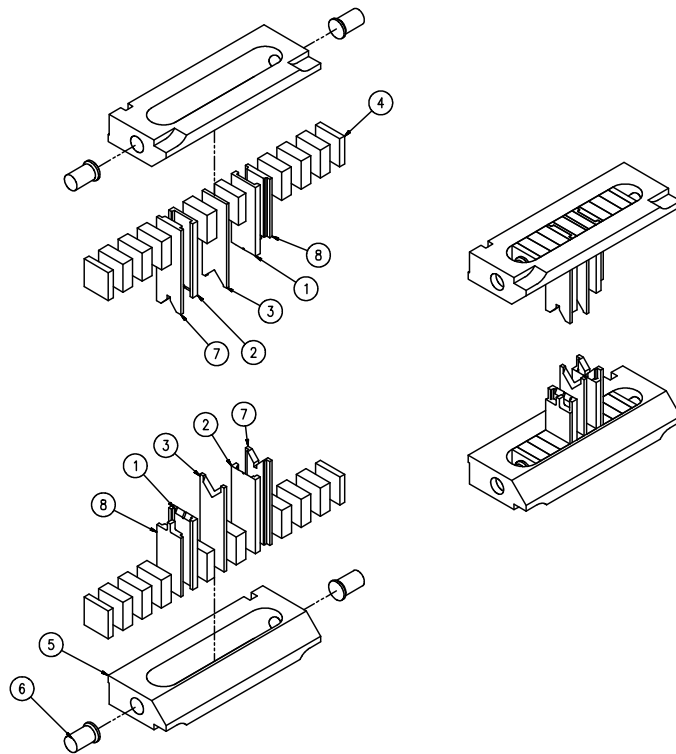
# Artos Standard Series Blades

Used in the following **Artos, AMP, & Kut-Rite** machines:

**Artos:** CS series | TA-20 | S-1 | **Amp:** CLS series | **Kut-Rite:** MCS series | BTS series



## "ID" Series Tooling Setup



No.	Part Description	Qty.	No.	Part Description	Qty.
1	"ID" Strip Blade-Short	2	5	Artos 4" Toolholder	2
2	"ID" Strip Blade-Long	2	6	Mechtrix Endscrew/Washer Assembly	4
3	Cut-off Blade	2	7	"IDG" Wire Guide-Long	2
4	Spacers	-	8	"IDS" Stop-Short	2