

Schleuniger Tooling

Schleuniger Table of Contents

Schleuniger TM-66	Schleuniger - 2
Schleuniger HC-207	Schleuniger - 2
Schleuniger MC-252	Schleuniger - 3
Schleuniger MP-257	Schleuniger - 2
Schleuniger SemiRigid 1000 (SR-1000)	Schleuniger - 3
Schleuniger UniStrip 2015/2100/2545 (US-2015) (US-2100) (US-2545)	Schleuniger - 4
Schleuniger UniStrip 2300 (US-2300)	Schleuniger - 5
Schleuniger UniStrip 2500 (US-2500)	Schleuniger - 6
Schleuniger UniStrip 2600 (US-2600)	Schleuniger - 7
Schleuniger EcoCut 3200 (EC-3200)	Schleuniger - 7
Schleuniger EcoCut 3300 (EC-3300)	Schleuniger - 8
Schleuniger UC-3750	Schleuniger - 8
Schleuniger OC-3950	Schleuniger - 8
Schleuniger JC-3985	Schleuniger - 9
Schleuniger CoaxStrip 5300	Schleuniger - 2
Schleuniger CoaxStrip 5300 MX	Schleuniger - 3
Schleuniger CoaxStrip 5400	Schleuniger - 9
Schleuniger CoaxStrip 5500	Schleuniger - 10
Schleuniger FiberOptic 7010 (FO-7010) and FiberOptic 7045 (FO-7010)	Schleuniger - 10
Schleuniger MP-8015	Schleuniger - 10
Schleuniger JacketStrip 8300 (JS-8300) and JacketStrip 8310 (JS-8310)	Schleuniger - 11
Schleuniger JacketStrip 8400 (JS-8400)	Schleuniger - 11
Schleuniger CS-9000	Schleuniger - 12
Schleuniger CS-9050	Schleuniger - 13
Schleuniger CS-9100	Schleuniger - 14
Schleuniger CA-9170	Schleuniger - 14
Schleuniger EcoStrip 9300 (ES-9300)	Schleuniger - 15
Schleuniger EcoStrip 9320 (ES-9320)	Schleuniger - 16
Schleuniger OmniStrip 9400 (OS-9400) and OmniStrip 9450 (OS-9450)	Schleuniger - 16
Schleuniger PowerStrip 9500 (PS-9500, PS-9500 BF, PS-9500 MX, PS-9500 P, PS-9500 RF, PS-9500 RS, PF-9500 RSL)	Schleuniger - 16
Schleuniger MegaStrip 9600 (MS-9600)	Schleuniger - 18
Schleuniger CrimpCenter 12	Schleuniger - 20
Schleuniger CrimpCenter 36/60/61/62/63/64/65/67 & CrimpCenter 70	Schleuniger - 21
Kirsten PP3 and K700 and K710 Stripper/Crimper Machines	Schleuniger - 22
Kirsten K750 ASC Stripper/Crimper Machines	Schleuniger - 23
Schleuniger StripCrimp 200 and StripCrimp 750 Stripper/Crimper Machines	Schleuniger - 23
PAWO B12, B16, B21 and Servo Stripper Machines	Schleuniger - 24
Special Tooling for Schleuniger Machines	Schleuniger - 25

Rev. 12/02/10



Mechtrix Corporation • W147 N9461 Held Drive • Menomonee Falls, WI 53051
Tel (262) 255-6555 • Fax (262) 255-2628 • Website <http://www.mechtrix.com>

Schleuniger Tooling

Schleuniger TM-66

Used In These Machines

The Schleuniger TM-66 Taping Machine uses a single blade to cut the tape to length. Mechtrix blades for the Schleuniger TM-66 are made to precision standards from a specially alloyed tool steel to insure optimum performance and blade life.

Schleuniger
TM-66



Schleuniger TM-66 Taping Machine Blade

Mechtrix Description	Mechtrix Part Number	Blade Form Diameter		OEM Part Number
		(in)	(mm)	
Schleuniger TM-66 Taping Machine Blade	26638	-	-	TM-66-E255034

Schleuniger HC-207, MP-257 and CoaxStrip 5300

Used In These Machines

The Schleuniger HC-207, MP-257 and CoaxStrip 5300 Machines use a single set of rotary stripping blades to remove the insulation from the end of a wire. Mechtrix blades for the Schleuniger HC-207, MP-257 and CoaxStrip 5300 are made to precision standards from specially selected tungsten carbide to insure optimum performance and blade life.

Schleuniger
HC-207
MP-257
CoaxStrip 5300



Schleuniger HC-207, MP-257 and CoaxStrip 5300 Blades

Mechtrix Description	Mechtrix Part Number	Blade Form Diameter		OEM Part Number
		(in)	(mm)	
Schleuniger HC-207/MP-257 Blade	3361	-	-	C4-0296
Schleuniger HC-207/MP-257 Blade w/TiN Coating	3361-CT1	-	-	C4-0296T

A set of blades for the Schleuniger HC-207 and MP-257 consists of two (2) pieces.

Schleuniger Tooling

Schleuniger MC-252 and CoaxStrip 5300 MX

Used In These
Machines

The Schleuniger MC-252 and Coax Strip 5300 MX Machines use either a two or four blade set-up to cut a wire to length and then remove the insulation from the end. Mechtrix blades for the MC-252 are made to precision standards from specially selected tungsten carbide to insure optimum performance and blade life.

Schleuniger
MC-252
CoaxStrip 5300 MX



Schleuniger MC-252 and CoaxStrip 5300 MX Blades

Mechtrix Description	Mechtrix Part Number	Blade Form Diameter		OEM Part Number
		(in)	(mm)	
Schleuniger MC-252 Blade (2-Blade Set-up)	16904-02	-	-	C4-0755
Schleuniger MC-252 Blade (4-Blade Set-up)	28425-02	-	-	C4-0755A

A set of blades for the Schleuniger MC-252 or CoaxStrip 5300 MX consists of either two (2) or four (4) pieces.

Schleuniger SemiRigid 1000

Used In These
Machines

The Schleuniger SR-1000 Machine uses a combination of stripping blades to remove the insulation from the end of a semi-rigid coaxial cable as well as pointing the inner conductor. Mechtrix blades for the Schleuniger SR-1000 are made to precision standards from specially selected tungsten carbide to insure optimum performance and blade life.

Schleuniger
SR-1000



Schleuniger SR-1000 Blades

Mechtrix Description	Mechtrix Part Number	Blade Form Diameter		OEM Part Number
		(in)	(mm)	
Schleuniger SR-1000 Position (1) Blade	16977-01	-	-	S4-0564NR
Schleuniger SR-1000 Position (2) Blade	20414-01	-	-	S4-0565NR
Schleuniger SR-1000 Position (3) Blade	23426-01	-	-	S4-0565AR
Schleuniger SR-1000 Pointing Blade 30°	23427	-	-	S4-0789NaR
Schleuniger SR-1000 Pointing Blade 45°	23428	-	-	S4-0789NR

A set of blades for the Schleuniger SR-1000 depends upon if you are doing a one or two-step strip with or without pointing.

Schleuniger Tooling

Schleuniger UniStrip 2015, UniStrip 2100 & UniStrip 2545

Used In These Machines

Schleuniger
US-2015
US-2100
US-2545

The Schleuniger US-2015, US-2100 and US-2545 Machines use a single set of "Universal" Stripping Blades to remove the insulation from the end of a wire. Mechtrix blades for the Schleuniger US-2015, US-2100 and US-2545 Machines are made to precision standards from a specially selected tool steel or specially selected tungsten carbide to insure optimum performance and blade life.

In addition to the "Universal" Stripping Blades, Mechtrix also offers both our patented M-Series and Full Radius stripping form geometries for processing difficult insulations in the US-2015, US-2100 and US-2545. Please contact Mechtrix for assistance in selecting the appropriate style and size blade for your particular application.



Schleuniger US-2015, US-2100 and US-2545 Universal Blades

Mechtrix Description	Mechtrix Part Number	Blade Form Diameter		OEM Part Number
		(in)	(mm)	
Schleuniger US-2015/US-2100/US-2545 Universal Blade - Tool Steel	4530	-	-	A4-0360 or CXP-2015-012C
Schleuniger US-2015/US-2100/US-2545 Universal Blade - Carbide	14453	-	-	CXP-2015-013C



Schleuniger US-2015, US-2100 and US-2545 M-Series Blades

Mechtrix Description	Mechtrix Part Number	Blade Form Diameter		OEM Part Number
		(in)	(mm)	
M-Series Blades are available in 0.1mm increments in the following sizes: S2015M-0.3 thru S2015M-5.0	-	-	-	-



Schleuniger US-2015, US-2100 and US-2545 Full Radius Blades

Mechtrix Description	Mechtrix Part Number	Blade Form Diameter		OEM Part Number
		(in)	(mm)	
Full Radius Blades are available in 0.1mm increments in the following sizes: S2015-0.4D thru S2015-5.0D	-	-	-	-

A set of blades for the Schleuniger US-2015, US-2100 or US-2545 consists of two (2) blades.

Mechtrix M-Series Stripping Blades are protected by U.S. Patent 4,630,406 and U.S. Patent 4,577,405



Mechtrix Corporation • W147 N9461 Held Drive • Menomonee Falls, WI 53051
Tel (262) 255-6555 • Fax (262) 255-2628 • Website <http://www.mechtrix.com>

Schleuniger Tooling

Schleuniger UniStrip 2300

Used In These Machines

Schleuniger US-2300

The Schleuniger US-2300 Machines use a single set of "Universal" Stripping Blades to remove the insulation from the end of a wire. Mechtrix blades for the Schleuniger US-2300 Machines are made to precision standards from a specially selected tool steel or specially selected tungsten carbide to insure optimum performance and blade life.

In addition to the "Universal" Stripping Blades, Mechtrix also offers both our patented M-Series and Full Radius stripping form geometries for processing difficult insulations in the US-2300. Please contact Mechtrix for assistance in selecting the appropriate style and size blade for your particular application.



Schleuniger US-2300 Universal Blades

Mechtrix Description	Mechtrix Part Number	Blade Form Diameter		OEM Part Number
		(in)	(mm)	
Schleuniger US-2300 Universal Blade - Tool Steel	32448	-	-	STM-410993
Schleuniger US-2300 Universal Blade - Carbide		-	-	



Schleuniger US-2300 M-Series Blades

Mechtrix Description	Mechtrix Part Number	Blade Form Diameter		OEM Part Number
		(in)	(mm)	
M-Series Blades are available in 0.1mm increments in the following sizes: S2300M-0.3 thru S2300M-5.0	-	-	-	-



Schleuniger US-2300 Full Radius Blades

Mechtrix Description	Mechtrix Part Number	Blade Form Diameter		OEM Part Number
		(in)	(mm)	
Full Radius Blades are available in 0.1mm increments in the following sizes: S2300-0.4D thru S2300-5.0D	-	-	-	-

A set of blades for the Schleuniger US-2300 consists of two (2) blades

Mechtrix M-Series Stripping Blades are protected by U.S. Patent 4,630,406 and U.S. Patent 4,577,405



Mechtrix Corporation • W147 N9461 Held Drive • Menomonee Falls, WI 53051
Tel (262) 255-6555 • Fax (262) 255-2628 • Website <http://www.mechtrix.com>

Schleuniger Tooling

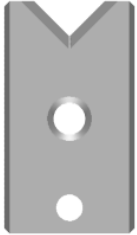
Schleuniger UniStrip 2500

Used In These Machines

Schleuniger US-2500

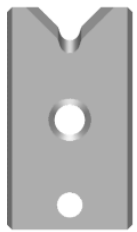
The Schleuniger US-2500 Machines use a single set of "Universal" Stripping Blades to remove the insulation from the end of a wire. Mechtrix blades for the Schleuniger US-2500 Machines are made to precision standards from a specially selected tool steel to insure optimum performance and blade life.

In addition to the "Universal" Stripping Blades, Mechtrix also offers three additional stripping form geometries for processing difficult insulations in the US-2500 these include our patented M-Series, Full Radius and Die-Type stripping blades. Please contact Mechtrix for assistance in selecting the appropriate style and size blade for your particular application.



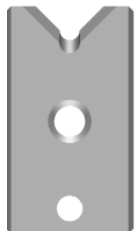
Schleuniger US-2500 Universal Blades

Mechtrix Description	Mechtrix Part Number	Blade Form Diameter		OEM Part Number
		(in)	(mm)	
Schleuniger US-2500 Universal Blade - Tool Steel	13421	-	-	D4-1300 or USP-1300



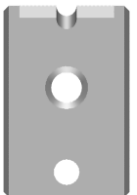
Schleuniger US-2500 M-Series Blades

Mechtrix Description	Mechtrix Part Number	Blade Form Diameter		OEM Part Number
		(in)	(mm)	
M-Series Blades are available in 0.1mm increments in the following sizes: S25M-0.3 thru S25M-7.0	-	-	-	-



Schleuniger US-2500 Full Radius Blades

Mechtrix Description	Mechtrix Part Number	Blade Form Diameter		OEM Part Number
		(in)	(mm)	
Full Radius Blades are available in 0.1mm increments in the following sizes: S25-0.4D thru S25-7.0D	-	-	-	USP-B4-1300RV##



Schleuniger US-2500 Die-Type Blades

Mechtrix Description	Mechtrix Part Number	Blade Form Diameter		OEM Part Number
		(in)	(mm)	
Die-Type Blades are available in 0.1mm increments in the following sizes: S25D-0.4 thru S25D-7.0	-	-	-	-

A set of blades for the Schleuniger US-2500 consists of two (2) pieces.

Mechtrix M-Series Stripping Blades are protected by U.S. Patent 4,630,406 and U.S. Patent 4,577,405



Mechtrix Corporation • W147 N9461 Held Drive • Menomonee Falls, WI 53051
Tel (262) 255-6555 • Fax (262) 255-2628 • Website <http://www.mechtrix.com>

Schleuniger Tooling

Schleuniger UniStrip 2600

Used In These Machines

Schleuniger US-2600



The Schleuniger US-2600 Machines use a single set of "Universal" Stripping Blades to remove the insulation from the end of a wire. Mechtrix blades for the Schleuniger US-2600 Machines are made to precision standards from a specially selected tool steel to insure optimum performance and blade life.

In addition to the "Universal" Stripping Blades, Mechtrix also offers three additional stripping form geometries for processing difficult insulations in the US-2600 these include our patented M-Series and Full Radius stripping blades. Please contact Mechtrix for assistance in selecting the appropriate style and size blade for your particular application.

Schleuniger US-2600 Universal Blades

Mechtrix Description	Mechtrix Part Number	Blade Form Diameter		OEM Part Number
		(in)	(mm)	
Schleuniger US-2600 Universal Blade	26211	-	-	STH-402.586



Schleuniger US-2600 M-Series Blades

Mechtrix Description	Mechtrix Part Number	Blade Form Diameter		OEM Part Number
		(in)	(mm)	
M-Series Blades are available in 0.1mm increments in the following sizes: S26M-0.3 thru S26M-7.0	-	-	-	-



Schleuniger US-2600 Full Radius Blades

Mechtrix Description	Mechtrix Part Number	Blade Form Diameter		OEM Part Number
		(in)	(mm)	
Full Radius Blades are available in 0.1mm increments in the following sizes: S26-0.4D thru S26-7.0D	-	-	-	-

A set of blades for the Schleuniger US-2600 consists of two (2) pieces.

Schleuniger EcoCut 3200

Used In These Machines

Schleuniger EC-3200



The Schleuniger EC-3200 Machine uses a single blade to cut material to length. Mechtrix blades for the Schleuniger EC-3200 are made to precision standards from a specially selected tool steel to insure optimum performance and blade life.

Schleuniger EcoCut-3200 Blades

Mechtrix Description	Mechtrix Part Number	Blade Form Diameter		OEM Part Number
		(in)	(mm)	
Schleuniger EC-3200 Tubing Cutter Blade	32142	-	-	CTK-406430

Mechtrix M-Series Stripping Blades are protected by U.S. Patent 4,630,406 and U.S. Patent 4,577,405



Mechtrix Corporation • W147 N9461 Held Drive • Menomonee Falls, WI 53051
Tel (262) 255-6555 • Fax (262) 255-2628 • Website <http://www.mechtrix.com>

Schleuniger Tooling

Schleuniger EcoCut 3300 and OC-3950

Used In These
Machines

Schleuniger
EcoCut 3300
OC-3950

The Schleuniger EcoCut 3300 and OC-3950 Machines use a single set of blades to cut material to length. Mechtrix blades for the Schleuniger EcoCut 3300 and OC-3950 are made to precision standards from a specially selected tool steel or specially selected tungsten carbide to insure optimum performance and blade life.



OC-3950 Shear Blade



OC-3950 Shear Block

Schleuniger EcoCut-3300 and OC-3950 Blades

Mechtrix Description	Mechtrix Part Number	Blade Form Diameter		OEM Part Number
		(in)	(mm)	
Schleuniger EC-3300/OC-3950 Shear Blade	27252	-	-	302.5006 or OCP-900
Schleuniger EC-3300/OC-3950 Shear Block	27255-500	-	-	402.5000 or OCP-900
Schleuniger EC-3300/OC-3950 Shear Blade (Carbide)	31299-500	-	-	OCP-15 or OCP-902
Schleuniger EC-3300/OC-3950 Shear Block (Carbide)	31300-500	-	-	OCP-14 or OCP-902

A set of blades for the Schleuniger EcoCut 3300 or OC-3950 consists of one (1) shear blade and one (1) shear block.

Schleuniger UC-3750

Used In These
Machines

Schleuniger
UC-3750

The Schleuniger UC-3750 Machine uses a single set of blades to cut material to length. Mechtrix blades for the Schleuniger UC-3750 are made to precision standards from a specially selected tool steel to insure optimum performance and blade life.



UC-3750 Anvil



UC-3750 Blade

Schleuniger UC-3750 Blades

Mechtrix Description	Mechtrix Part Number	Blade Form Diameter		OEM Part Number
		(in)	(mm)	
Schleuniger UC-3750 Anvil	12390	-	-	UC7-0002
Schleuniger UC-3750 Blade	12389	-	-	UC7-0002

A set of blades for the Schleuniger UC-3750 consists of one (1) anvil and one (1) blade.

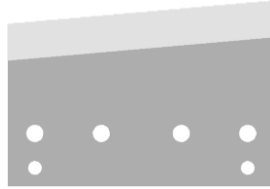
Schleuniger Tooling

Schleuniger JC-3985

Used In These Machines

Schleuniger JC-3985

The Schleuniger JC-3985 Machine uses a single set of blades to cut material to length. Mechtrix blades for the Schleuniger JC-3985 are made to precision standards from a specially selected tool steel to insure optimum performance and blade life.



Schleuniger JC-3985 Blades

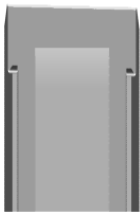
Mechtrix Description	Mechtrix Part Number	Blade Form Diameter		OEM Part Number
		(in)	(mm)	
Schleuniger JC-3985 Blade-Upper	24951	-	-	JCP-0100 202.6024
Schleuniger JC-3985 Shear Plate-Lower		-	-	JCP-0100 202.6071

Schleuniger CoaxStrip 5400

Used In These Machines

Schleuniger CoaxStrip 5400

The Schleuniger CoaxStrip 5400 Machine uses a single set of blades to cut material to length. Mechtrix blades for the Schleuniger CoaxStrip 5400 are made to precision standards from a specially tungsten carbide to insure optimum performance and blade life.



Schleuniger CoaxStrip 5400 Blades

Mechtrix Description	Mechtrix Part Number	Blade Form Diameter		OEM Part Number
		(in)	(mm)	
Schleuniger CoaxStrip 5400 Strip Blade - Carbide	25617-02	-	-	C4-1830T or CXG-C4-1830

A set of blades for the Schleuniger CoaxStrip 5400 consists of two (2) stripping blades.

Schleuniger Tooling

Schleuniger CoaxStrip 5500 and MP-8015

Used In These Machines

Schleuniger
CoaxStrip 5500
MP-8015



The Schleuniger CoaxStrip 5500 and MP-8015 Machines use four "Universal" Stripping Blades to remove the insulation from the end of a wire. Mechtrix blades for the Schleuniger CoaxStrip 5500 and MP-8015 are made to precision standards from specially selected tungsten carbide and are coated with titanium nitride to insure optimum performance and blade life.

Schleuniger CoaxStrip 5500 and MP-8015 Blades

Mechtrix Description	Mechtrix Part Number	Blade Form Diameter		OEM Part Number
		(in)	(mm)	
Schleuniger Coax Strip 5500/MP-8015 Blade (Standard)	04717-CT1	-	-	CXP-8015-014C or 04-0400
Schleuniger Coax Strip 5500/MP-8015 Blade (25°)	27401-CT1	-	-	CXP-8015-064C or 04-0400A

A set of blades for the Schleuniger CoaxStrip 5500 and MP-8015 consists of four (4) blades.

Schleuniger FiberOptic 7010 and FiberOptic 7045

Used In These Machines

Schleuniger
FiberOptic 7010
FiberOptic 7045



The Schleuniger FiberOptic 7010 and FiberOptic 7045 Machines use a blade and anvil to cut-off the Kevlar fibers that are used in the construction of fiber optic cable. Mechtrix blades for the Schleuniger FiberOptic 7010 and FiberOptic 7045 Machines are made to precision standards from a specially selected tool steel and specially selected tungsten carbide to insure optimum performance and blade life.

Schleuniger FiberOptic 7010 and FiberOptic 7045 Cut-off Blades

Mechtrix Description	Mechtrix Part Number	Blade Form Diameter		OEM Part Number
		(in)	(mm)	
Schleuniger FO-7010/FO-7045 Kevlar Cut-off Blade	31739	-	-	FOP-032 or L4-1041B
Schleuniger FO-7010/FO-7045 Kevlar Anvil	31676	-	-	FOP-033 or L4-1042B

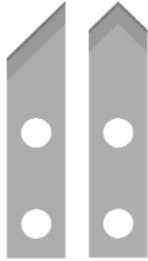
Schleuniger Tooling

Schleuniger JacketStrip 8300 and JacketStrip 8310

Used In These Machines

The Schleuniger JacketStrip 8300 and JacketStrip 8310 Machines use a single set of blades consisting of an axial and radial stripping blade. Mechtrix blades for the Schleuniger JacketStrip 8300 and JacketStrip 8310 are made to precision standards from a specially selected tool steel to insure optimum performance and blade life.

Schleuniger JacketStrip 8300 JacketStrip 8310



Schleuniger JacketStrip 8300 and JacketStrip 8310 Blades

Mechtrix Description	Mechtrix Part Number	Blade Form Diameter		OEM Part Number
		(in)	(mm)	
Schleuniger JS-8300/JS-8310 Axial Blade	13910	-	-	301.5027 or JSP-101
Schleuniger JS-8300/JS-8310 Radial Blade	13911	-	-	301.5026 or JSP-100

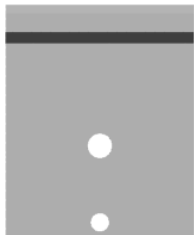
A set of blades for the Schleuniger JS 8300 and JS 8310 consists of one (1) axial and one (1) radial blade.

Schleuniger JacketStrip 8400

Used In These Machines

The Schleuniger JacketStrip 8400 Machine uses a set of four "Universal" Stripping Blades to remove the outer jacket from the end of a cable. Mechtrix blades for the Schleuniger JacketStrip 8400 are made to precision standards from a specially selected tool steel to insure optimum performance and blade life.

Schleuniger JacketStrip 8400



Schleuniger JacketStrip 8400 Blades

Mechtrix Description	Mechtrix Part Number	Blade Form Diameter		OEM Part Number
		(in)	(mm)	
Schleuniger JS-8400 Strip Blade	19870	-	-	JS4-0002 or 301.6082

A set of blades for the Schleuniger JS-8400 consists of four (4) stripping blades.

Schleuniger Tooling

Schleuniger CS-9000

Used In These Machines

Schleuniger CS-9000

Komax Komax 33 Komax 35

The Schleuniger CS-9000 Machine uses a single set of "Universal" Stripping Blades to remove the insulation from the end of a wire. Mechtrix blades for the CS-9000 are made to precision standards from specially selected tungsten carbide to insure optimum performance and blade life.

In addition to the "Universal" Stripping Blades, Mechtrix also offers both our patented M-Series and Full Radius stripping form geometries for processing difficult insulations in the CS-9000. Mechtrix M-Series and Full Radius Blades for the Schleuniger CS-9000 are made to precision standards from a specially selected tool steel to insure optimum performance and blade life. Please contact Mechtrix for assistance in selecting the appropriate style and size blade for your particular application.



Schleuniger CS-9000 Universal Blades

Mechtrix Description	Mechtrix Part Number	Blade Form Diameter		OEM Part Number
		(in)	(mm)	
Schleuniger CS-9000 Universal-Short (KS33)	1613-01	-	-	-
Schleuniger CS-9000 Universal-Long (KLS33)	1612-01	-	-	-



Schleuniger CS-9000 M-Series Blades

Mechtrix Description	Mechtrix Part Number	Blade Form Diameter		OEM Part Number
		(in)	(mm)	
M-Series Blades are available in 0.1mm increments in the following sizes: K33M-0.3 thru K33M-7.0 Long and Short	-	-	-	-



Schleuniger CS-9000 Full Radius Blades

Mechtrix Description	Mechtrix Part Number	Blade Form Diameter		OEM Part Number
		(in)	(mm)	
Full Radius Blades are available in 0.1mm increments in the following sizes: K33-0.4D thru K33-7.0D Long and Short	-	-	-	-

A set of blades for the Schleuniger CS-9000 consists of one (1) long and one (1) short stripping blade.

Mechtrix M-Series Stripping Blades are protected by U.S. Patent 4,630,406 and U.S. Patent 4,577,405



Mechtrix Corporation • W147 N9461 Held Drive • Menomonee Falls, WI 53051
Tel (262) 255-6555 • Fax (262) 255-2628 • Website <http://www.mechtrix.com>

Schleuniger Tooling

Schleuniger CS-9050

Used In These Machines

Schleuniger CS-9050

The Schleuniger CS-9050 Machine uses a single set of "Universal" Stripping Blades to remove the insulation from the end of a wire. Mechtrix blades for the Schleuniger CS-9050 are made to precision standards from a specially selected tool steel to insure optimum performance and blade life.

In addition to the "Universal" Stripping Blades, Mechtrix also offers both our patented M-Series and Full Radius stripping form geometries for processing difficult insulations in the CS-9050. Please contact Mechtrix for assistance in selecting the appropriate style and size blade for your particular application.



Schleuniger CS-9050 Universal Blades

Mechtrix Description	Mechtrix Part Number	Blade Form Diameter		OEM Part Number
		(in)	(mm)	
Schleuniger CS-9050 Universal-Short	16986	-	-	-
Schleuniger CS-9050 Universal-Long	16985	-	-	-



Schleuniger CS-9050 M-Series Blades

Mechtrix Description	Mechtrix Part Number	Blade Form Diameter		OEM Part Number
		(in)	(mm)	
M-Series Blades are available in 0.1mm increments in the following sizes: S9050M-0.3 thru S9050M-7.0 Long and Short	-	-	-	-



Schleuniger CS-9050 Full Radius Blades

Mechtrix Description	Mechtrix Part Number	Blade Form Diameter		OEM Part Number
		(in)	(mm)	
Full Radius Blades are available in 0.1mm increments in the following sizes: S9050-0.4D thru S9050-7.0D Long and Short	-	-	-	-

A set of blades for the Schleuniger CS-9050 consists of one (L) long stripping blade with a thru hole and one (S) short stripping blade with a tapped hole.

Mechtrix M-Series Stripping Blades are protected by U.S. Patent 4,630,406 and U.S. Patent 4,577,405



Mechtrix Corporation • W147 N9461 Held Drive • Menomonee Falls, WI 53051
Tel (262) 255-6555 • Fax (262) 255-2628 • Website <http://www.mechtrix.com>

Schleuniger Tooling

Schleuniger CS-9100

Used In These Machines

Schleuniger CS-9100

The Schleuniger CS-9100 Machine uses a single set of "Universal" Stripping Blades to remove the insulation from the end of a wire. Mechtrix blades for the Schleuniger CS-9100 are made to precision standards from a specially selected tool steel or specially selected tungsten carbide to insure optimum performance and blade life.

In addition to the "Universal" Stripping Blades, Mechtrix also offers both our patented M-Series and Full Radius stripping form geometries for processing difficult insulations in the CS-9100. Please contact Mechtrix for assistance in selecting the appropriate style and size blade for your particular application.

Schleuniger CS-9100 Universal Blades



Mechtrix Description	Mechtrix Part Number	Blade Form Diameter		OEM Part Number
		(in)	(mm)	
Schleuniger CS-9100 Universal-Short - Tool Steel	12585	-	-	-
Schleuniger CS-9100 Universal-Long - Tool Steel	12584	-	-	-
Schleuniger CS-9100 Universal-Short - Carbide	27647-500	-	-	-
Schleuniger CS-9100 Universal-Long - Carbide	27647	-	-	-

Schleuniger CS-9100 M-Series Blades



Mechtrix Description	Mechtrix Part Number	Blade Form Diameter		OEM Part Number
		(in)	(mm)	
M-Series Blades are available in 0.1mm increments in the following sizes: S91M-0.3 thru S91M-7.0 Long and Short	-	-	-	-

Schleuniger CS-9100 Full Radius Blades



Mechtrix Description	Mechtrix Part Number	Blade Form Diameter		OEM Part Number
		(in)	(mm)	
Full Radius Blades are available in 0.1mm increments in the following sizes: S91-0.4D thru S91-7.0D Long and Short	-	-	-	-

A set of blades for the Schleuniger CS-9100 consists of one (L) long stripping blade with a thru hole and one (S) short stripping blade with a tapped hole.

Schleuniger CA-9170

Used In These Machines

Schleuniger CA-9170

The Schleuniger CA-9170 Rotary Stripping Attachment for the CS-9100 and PS-9500 Machines uses two "Universal" Stripping Blades to remove the insulation from the end of a wire. Mechtrix blades for the Schleuniger CA-9170 are made to precision standards from specially selected tungsten carbide and are coated with titanium nitride to insure optimum performance and blade life.

Schleuniger CA-9170 Blades



Mechtrix Description	Mechtrix Part Number	Blade Form Diameter		OEM Part Number
		(in)	(mm)	
Schleuniger CA-9170 Blade	16000-CT1	-	-	301.9401

A set of blades for the Schleuniger CA-9170 consists of two pieces.



Mechtrix Corporation • W147 N9461 Held Drive • Menomonee Falls, WI 53051
Tel (262) 255-6555 • Fax (262) 255-2628 • Website <http://www.mechtrix.com>

Schleuniger Tooling

Schleuniger EcoStrip 9300

Used In These
Machines

Schleuniger
ES-9300

The Schleuniger ES-9300 Machine uses a single set of "Universal" Stripping Blades to remove the insulation from the end of a wire. Mechtrix blades for the Schleuniger ES-9300 are made to precision standards from a specially selected tool steel or specially selected tungsten carbide to insure optimum performance and blade life.

In addition to the "Universal" Stripping Blades, Mechtrix also offers both our patented M-Series and Full Radius stripping form geometries for processing difficult insulations in the ES-9300. Please contact Mechtrix for assistance in selecting the appropriate style and size blade for your particular application.



Schleuniger ES-9300 Universal Blades

Mechtrix Description	Mechtrix Part Number	Blade Form Diameter		OEM Part Number
		(in)	(mm)	
Schleuniger ES-9300 Universal-Short - Tool Steel	19280	-	-	301.7058 or
Schleuniger ES-9300 Universal-Long - Tool Steel	19279	-	-	ESP-401.7535
Schleuniger ES-9300 Universal-Short - Carbide	27648-500	-	-	ESP-401.7536
Schleuniger ES-9300 Universal-Long - Carbide	27648	-	-	



Schleuniger ES-9300 M-Series Blades

Mechtrix Description	Mechtrix Part Number	Blade Form Diameter		OEM Part Number
		(in)	(mm)	
M-Series Blades are available in 0.1mm increments in the following sizes: S93M-0.3 thru S93M-7.0 Long and Short	-	-	-	-



Schleuniger ES-9300 Full Radius Blades

Mechtrix Description	Mechtrix Part Number	Blade Form Diameter		OEM Part Number
		(in)	(mm)	
Full Radius Blades are available in 0.1mm increments in the following sizes: S93-0.4D thru S93-7.0D Long and Short	-	-	-	ESP-401.7501 to ESP-401.7577

A set of blades for the Schleuniger ES-9300 consists of one (L) long stripping blade with a thru hole and one (S) short stripping blade with a tapped hole.

Mechtrix M-Series Stripping Blades are protected by U.S. Patent 4,630,406 and U.S. Patent 4,577,405



Mechtrix Corporation • W147 N9461 Held Drive • Menomonee Falls, WI 53051
Tel (262) 255-6555 • Fax (262) 255-2628 • Website <http://www.mechtrix.com>

Schleuniger Tooling

EcoStrip 9320/OmniStrip 9400/OmniStrip 9450 and PowerStrip 9500

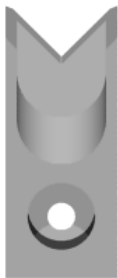
Used In These Machines

Schleuniger
ES-9320
OS-9400
OS-9450
PS-9500

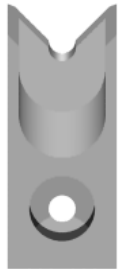
The Schleuniger ES-9320, OS-9400, OS-9450 and PS-9500 Series Machines use a single set of "Universal" Stripping Blades to remove the insulation from the end of a wire. Several of the machines are also capable of using multiple blade sets for more complex processing. Mechtrix blades for these Schleuniger Machines are made to precision standards from a specially selected tool steel or tungsten carbide to insure optimum performance and blade life. The blades for these Schleuniger Machines come in two standard widths (16mm for 1 or 2 position operation) and (10.6mm for 3 position operation). Wider blades are also available for multi-conductor and other special applications.

In addition to the "Universal" Stripping Blades, Mechtrix also offers both our patented M-Series and Full Radius stripping form geometries for processing difficult insulations in the ES-9320, OS-9400, OS-9450 and PS-9500. Please contact Mechtrix for assistance in selecting the appropriate style and size blade for your specific application.

Schleuniger ES-9320/OS-9400/OS-9450/PS-9500 Universal Blades (16mm)



Mechtrix Description	Mechtrix Part Number	Blade Form Diameter		OEM Part Number
		(in)	(mm)	
Schleuniger S95S Universal-Short - Tool Steel	19428	-	-	301.9056 or PSP-401.9008
Schleuniger S95L Universal-Long - Tool Steel	19426	-	-	
Schleuniger S95S Universal-Short - Carbide	27649-500	-	-	PSP-401.9017
Schleuniger S95L Universal-Long - Carbide	27649	-	-	
Schleuniger S95-MCR-S Universal-Short	27616	-	-	-
Schleuniger S95-MCR-L Universal-Long	27615	-	-	-



Schleuniger ES-9320/OS-9400/OS-9450/PS-9500 M-Series Blades (16mm)

Mechtrix Description	Mechtrix Part Number	Blade Form Diameter		OEM Part Number
		(in)	(mm)	
M-Series Blades are available in 0.1mm increments in the following sizes: S95M-0.3 thru S95M-12.0 Long and Short	-	-	-	-



Schleuniger ES-9320/OS-9400/OS-9450/PS-9500 Full Radius Blades (16mm)

Mechtrix Description	Mechtrix Part Number	Blade Form Diameter		OEM Part Number
		(in)	(mm)	
Full Radius Blades are available in 0.1mm increments in the following sizes: S95-0.4D thru S95-12.0D Long and Short	-	-	-	PSP-401.9500 to PSP.401.9600



Schleuniger PS-9500 MX Rotary Stripping Blades

Mechtrix Description	Mechtrix Part Number	Blade Form Diameter		OEM Part Number
		(in)	(mm)	
Schleuniger PS-9500 MX Rotary Strip Blades	31213-02-CT1	-	-	404239

A set of blades for the Schleuniger ES-9320/OS-9400/OS-9450/PS-9500 consists of at least one (L) long stripping blade with a thru hole and one (S) short stripping blade with a tapped hole. Some of these machines are capable of accepting multiple blade sets.

Mechtrix M-Series Stripping Blades are protected by U.S. Patent 4,630,406 and U.S. Patent 4,577,405



Mechtrix Corporation • W147 N9461 Held Drive • Menomonee Falls, WI 53051
Tel (262) 255-6555 • Fax (262) 255-2628 • Website <http://www.mechtrix.com>

Schleuniger Tooling

EcoStrip 9320/OmniStrip 9400/OmniStrip 9450 and PowerStrip 9500

Used In These Machines

Schleuniger
ES-9320
OS-9400
OS-9450
PS-9500

The Schleuniger PS-9500 Blades listed below are for use when 3 blade positions are required to perform more complex stripping operations. The geometries shown below are just a few of the standard types available. Many other design possibilities are possible. Please contact Mechtrix for assistance in selecting the appropriate style and size blade for your particular application.



Schleuniger ES-9320/OS-9400/OS-9450/PS-9500 Universal Blades (10.6mm)

Mechtrix Description	Mechtrix Part Number	Blade Form Diameter		OEM Part Number
		(in)	(mm)	
Schleuniger S95PNS Universal-Short - Tool Steel	27045-01	-	-	PSP-401.9010
Schleuniger S95PNL Universal-Long - Tool Steel	27044-01	-	-	



Schleuniger ES-9320/OS-9400/OS-9450/PS-9500 M-Series Blades (10.6mm)

Mechtrix Description	Mechtrix Part Number	Blade Form Diameter		OEM Part Number
		(in)	(mm)	
M-Series Blades are available in 0.1mm increments in the following sizes: S95NM-0.3 thru S95NM-7.0 Long and Short	-	-	-	-



Schleuniger ES-9320/OS-9400/OS-9450/PS-9500 Full Radius Blades (10.6mm)

Mechtrix Description	Mechtrix Part Number	Blade Form Diameter		OEM Part Number
		(in)	(mm)	
Full Radius Blades are available in 0.1mm increments in the following sizes: S95N-0.4D thru S95N-7.0D Long and Short	-	-	-	PSP-401.9602 to PSP.401.9678

A set of blades for the Schleuniger ES-9320/OS-9400/OS-9450/ PS-9500 consists of at least one (L) long stripping blade with a thru hole and one (S) short stripping blade with a tapped hole. Some of these machines are capable of accepting multiple blade sets.

PS-9500 MX

In addition to the standard stripping blades used in the PS-9500 Machine, the PS-9500 MX also uses (2) PS-9500 MX Rotary Stripping Blades. (Please see page Schleuniger - 15)

PS-9500 PS

This machine can remove the jacket from a round cable and then strip the individual inner conductors. The indexing and orientation device that accomplishes this operation requires blades that are 2mm thick. When ordering blades for the PS-9500 PS be sure to indicate this to Mechtrix.

PS-9500 RS and PS-9500 RSL

In addition to the standard stripping blades used in the PS-9500 Machine, the PS-9500 RS and PS-9500 RSL also use

(2) CA-9170 Rotary Stripping Blades. (Please see page Schleuniger - 13)

Mechtrix M-Series Stripping Blades are protected by U.S. Patent 4,630,406 and U.S. Patent 4,577,405



Mechtrix Corporation • W147 N9461 Held Drive • Menomonee Falls, WI 53051
Tel (262) 255-6555 • Fax (262) 255-2628 • Website <http://www.mechtrix.com>

Schleuniger Tooling

Schleuniger MegaStrip 9600

Used In These Machines

Schleuniger MS-9600

The Schleuniger MS-9600 Machines can use one, two or three sets of stripping blades to remove the insulation from the end of a wire. Mechtrix blades for the Schleuniger MS-9600 are made to precision standards from a specially selected tool steel to insure optimum performance and blade life.

In addition to the "Universal" Stripping Blades, Mechtrix also offers both our patented M-Series and Full Radius stripping form geometries for processing difficult insulations in the MS-9600. Please contact Mechtrix for assistance in selecting the appropriate style and size blade for your particular application.



Schleuniger MS-9600 Universal Blades (20mm)

Mechtrix Description	Mechtrix Part Number	Blade Form Diameter		OEM Part Number
		(in)	(mm)	
S96US-20W Universal-Short (1-14mm cable ø)	26259	-	-	402764
S96UL-20W Universal-Long (1-14mm cable ø)	26258	-	-	



Schleuniger MS-9600 M-Series Blades (20mm)

Mechtrix Description	Mechtrix Part Number	Blade Form Diameter		OEM Part Number
		(in)	(mm)	
M-Series Blades are available in 0.1mm increments in the following sizes: S96M-0.3-20 thru S96M-13.0-20 Long and Short	-	-	-	-



Schleuniger MS-9600 Full Radius Blades (20mm)

Mechtrix Description	Mechtrix Part Number	Blade Form Diameter		OEM Part Number
		(in)	(mm)	
Full Radius Blades are available in 0.1mm increments in the following sizes: S96-0.4D-20 thru S96-13.0D-20 Long and Short	-	-	-	402865 to 402887

A set of blades for the Schleuniger MS-9600 consists of at least one (L) long stripping blade with a thru hole and one (S) short stripping blade with a tapped hole.



Schleuniger MS-9600 Slit Blade

Mechtrix Description	Mechtrix Part Number	Blade Form Diameter		OEM Part Number
		(in)	(mm)	
Schleuniger S96 Slit Blade - Tool Steel	26977	-	-	401722

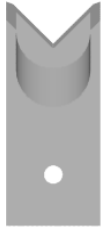


Schleuniger RU-9600 Rotary Unit

Mechtrix Description	Mechtrix Part Number	Blade Form Diameter		OEM Part Number
		(in)	(mm)	
Schleuniger S96RU Rotary Strip Blade - Tool Steel	29941-CT1	-	-	404210
Schleuniger S96RU Rotary Strip Blade - Carbide	29960-CT1	-	-	404212

Schleuniger Tooling

Schleuniger MegaStrip 9600 (cont.)



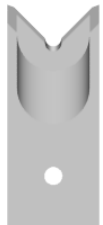
Schleuniger MS-9600 Universal Blades (28mm)

Mechtrix Description	Mechtrix Part Number	Blade Form Diameter		OEM Part Number
		(in)	(mm)	
S96US-28W Universal-Short (1-20mm cable ø)	26261	-	-	402765
S96UL-28W Universal-Long (1-20mm cable ø)	26260	-	-	402765
S96U-3.0RS-28W Short (6-20mm cable ø)	26042	0.236	6.0	402767
S96U-3.0RL-28W Long (6-20mm cable ø)	26041			



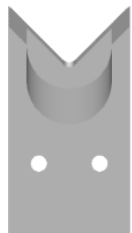
Schleuniger MS-9600 M-Series Blades (28mm)

Mechtrix Description	Mechtrix Part Number	Blade Form Diameter		OEM Part Number
		(in)	(mm)	
M-Series Blades are available in 0.1mm increments in the following sizes: S96M-0.3-28 thru S96M-19.0-28 Long and Short	-	-	-	-



Schleuniger MS-9600 Full Radius Blades (28mm)

Mechtrix Description	Mechtrix Part Number	Blade Form Diameter		OEM Part Number
		(in)	(mm)	
Full Radius Blades are available in 0.1mm increments in the following sizes: S96-0.4D-28 thru S96-19.0D-28 Long and Short	-	-	-	402836 to 402864



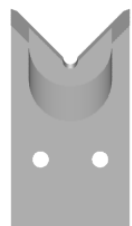
Schleuniger MS-9600 Universal Blades (40mm)

Mechtrix Description	Mechtrix Part Number	Blade Form Diameter		OEM Part Number
		(in)	(mm)	
S96US-40W Universal-Short (1-25.4mm cable ø)	26263	-	-	402766
S96UL-40W Universal-Long (1-25.4mm cable ø)	26262	-	-	402766
S96U-3.0RS-40W Short (6-25.4mm cable ø)	26265	0.236	6.0	402768
S96U-3.0RL-40W Long (6-25.4mm cable ø)	26264			



Schleuniger MS-9600 M-Series Blades (40mm)

Mechtrix Description	Mechtrix Part Number	Blade Form Diameter		OEM Part Number
		(in)	(mm)	
M-Series Blades are available in 0.1mm increments in the following sizes: S96M-0.3-40 thru S96M-24.0-40 Long and Short	-	-	-	-



Schleuniger MS-9600 Full Radius Blades (40mm)

Mechtrix Description	Mechtrix Part Number	Blade Form Diameter		OEM Part Number
		(in)	(mm)	
Full Radius Blades are available in 0.1mm increments in the following sizes: S96-0.4D-40 thru S96-24.0D-40 Long and Short	-	-	-	402801 to 402835

Schleuniger Tooling

Schleuniger CrimpCenter 12

Used In These Machines

Schleuniger CrimpCenter 12

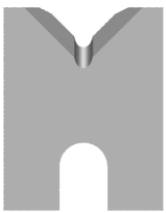
Mechtrix "MFCSC" Series Stripping Blades are used in Schleuniger CrimpCenter 12 Wire Processing Machines. "MFCSC" Stripping Blades are a "V" Style Stripping Blade and are designed to process a range of wire diameters from 0.1mm² to 6.0mm². The precise cutterhead motion control of the CrimpCenter 12 Machine allows for superior cutting and gathering ability, and longer blade life. Mechtrix "MFCSC" Stripping Blades are made to precision standards from a specially selected tool steel to insure optimum performance and blade life and are produced using state-of-the-art manufacturing techniques. "MFCSC" Stripping Blades have the Mechtrix patented feature of a cutting form which includes a perfectly formed cutting radius. Please contact Mechtrix for assistance in selecting the appropriate size blade for your particular application.

In addition to the standard replacement stripping blades for the Schleuniger CrimpCenter 12 Machines, Mechtrix also offers our "MFCSCM" Series and Full Radius Stripping Blades. "MFCSCM" Series Stripping Blades incorporate a Mechtrix patented blade design which offers a compound entry angle into the cutting portion of the blade. This design feature, while continuing to offer the advantages of a "V" type design (excellent wire gathering and adjustability) facilitates a higher degree of circumferential cut around a wire's conductor. "MFCSCM" Series and Full Radius Blades offer improved performance when processing wire which require a cutting configuration which closely matches the wire's conductor diameter. This feature is of greatest benefit when processing insulations which are either very soft, very hard and thin or just very thin. Please contact Mechtrix for assistance in selecting the appropriate style and size blade for your application.



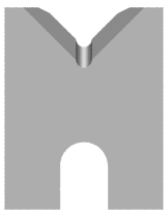
Schleuniger CrimpCenter 12 Stripping and Cut-off Blades

Mechtrix Description	Mechtrix Part Number	Blade Form Diameter		OEM Part Number
		(in)	(mm)	
MFCSC-UVS Stripping Blade	25613	-	-	16696
MFCSC-UVL Stripping/Cut-off Blade	25614	-	-	16697
MFCSC-HDC Heavy Duty Cut-off Blade	25615	-	-	16698



Schleuniger CrimpCenter 12 M-Series Blades

Mechtrix Description	Mechtrix Part Number	Blade Form Diameter		OEM Part Number
		(in)	(mm)	
M-Series Blades are available in 0.1mm increments in the following sizes: MFCSCM-0.3 thru MFCSCM-10.0	-	-	-	-



Schleuniger CrimpCenter 12 Full Radius Blades

Mechtrix Description	Mechtrix Part Number	Blade Form Diameter		OEM Part Number
		(in)	(mm)	
Full Radius Blades are available in 0.1mm increments in the following sizes: MFCSC-0.4D thru MFCSC-10.0D	-	-	-	-

Schleuniger Tooling

Schleuniger CrimpCenter 36/60/61/62/63/64/65/67 and 70 Blades

Used In These Machines

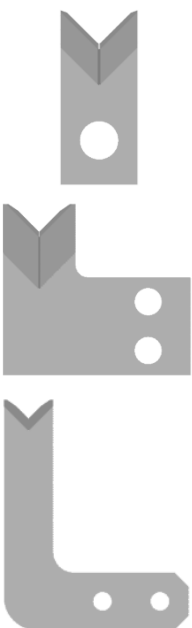
- Schleuniger CrimpCenter 36
- Schleuniger CrimpCenter 60
- Schleuniger CrimpCenter 61
- Schleuniger CrimpCenter 62
- Schleuniger CrimpCenter 63
- Schleuniger CrimpCenter 64
- Schleuniger CrimpCenter 65
- Schleuniger CrimpCenter 67
- Schleuniger CrimpCenter 70

Mechtrix "KA433" Series Stripping Blades are used in the Schleuniger CrimpCenter 36/60/61/62/63/64/65/67 and CrimpCenter 70 Wire Processing Machines (formerly the GHW SA1 and SA2). "KA433" Stripping Blades are a "V" Style Stripping Blade and are designed to process a range of wire diameters. Mechtrix "KA433" Stripping Blades are made to precision standards from a specially selected tool steel to insure optimum performance and blade life and are produced using state-of-the-art manufacturing techniques. "KA433" Stripping Blades have the Mechtrix patented feature of a cutting form which includes a perfectly formed cutting radius.

In addition to the standard replacement stripping blades, Mechtrix also offers our patented M-Series and Full Radius stripping form geometries for processing difficult insulations in the Schleuniger CrimpCenter Machines. Please contact Mechtrix for assistance in selecting the appropriate style and size blade for your particular application.

Schleuniger CrimpCenter 36/60/61/62/63/64/65/67/70 Stripping Blades

Mechtrix Description	Mechtrix Part Number	Blade Form Diameter		OEM Part Number
		(in)	(mm)	
KA433-0.1 Stripping Blade w/Titanium Coating	21651-CT1	0.00787	0.20	50920.010.295
KA433-0.25 Stripping Blade w/Titanium Coating	32396-CT1	0.01969	0.50	50000.581.574
KA433-0.5 Stripping Blade w/Titanium Coating	21284-CT1	0.03937	1.00	50920.009.437
KA433-0.75 Stripping Blade w/Titanium Coating	21652-CT1	0.05906	1.50	50000.581.576
KA433-1.0 Stripping Blade w/Titanium Coating	21283-CT1	0.07874	2.00	50000.581.577
KA433-1.25 Stripping Blade w/Titanium Coating	32397-CT1	0.09843	2.50	50920.009.578
KA433-1.5 Stripping Blade w/Titanium Coating	21653-CT1	0.11811	3.00	50920.009.438
KA433-2.0 Stripping Blade w/Titanium Coating	21654-CT1	0.15748	4.00	50000.581.580
KA433-2.5 Stripping Blade w/Titanium Coating	27932-CT1	0.19690	5.00	-



Schleuniger CrimpCenter 36/60/61/62/63/64/65/67/70 Cut-off Blades

Mechtrix Description	Mechtrix Part Number	Blade Form Diameter		OEM Part Number
		(in)	(mm)	
CrimpCenter Cut-off Blade	26444-CT1	-	-	50000.578.247
CrimpCenter (DT) Cut-off Blade	26443-CT1	-	-	50000.578.248
CrimpCenter 36 Cut-off Blade	32503-CT1	-	-	50000.585.532

Schleuniger CrimpCenter 36/60/61/62/63/64/65/67/70 M-Series Blades

Mechtrix Description	Mechtrix Part Number	Blade Form Diameter		OEM Part Number
		(in)	(mm)	
M-Series Blades are available in 0.1mm increments in the following sizes: KA433M-0.3 thru KA433M-4.0	-	-	-	-

Schleuniger CrimpCenter 36/60/61/62/63/64/65/67/70 Full Radius Blades

Mechtrix Description	Mechtrix Part Number	Blade Form Diameter		OEM Part Number
		(in)	(mm)	
Full Radius Blades are available in 0.1mm increments in the following sizes: KA433-0.4D thru KA433-4.0D	-	-	-	-

Mechtrix "KA433" Stripping Blades are protected by U.S. Patent 4,630,406 and U.S. Patent 4,577,405



Mechtrix Corporation • W147 N9461 Held Drive • Menomonee Falls, WI 53051
Tel (262) 255-6555 • Fax (262) 255-2628 • Website <http://www.mechtrix.com>

Schleuniger Tooling

Schleuniger/Kirsten PP3 Stripper/Crimper Machines

Used In These Machines

- Kirsten
- PP3
- PP3 WS
- PP3 Special
- PP3 Special LTC

The Schleuniger/Kirsten PP3 Machines use a single set of "Universal" Stripping Blades to remove the insulation from the end of a wire. Mechtrix blades for the PP3 Machines are made to precision standards from a specially selected tool steel to insure optimum performance and blade life and are produced using state-of-the-art manufacturing techniques.

In addition to the "Universal" Stripping Blades, Mechtrix also offers both our patented M-Series and Full Radius stripping form geometries for processing difficult insulations in the PP3 Machines. Please contact Mechtrix for assistance in selecting the appropriate style and size blade for your particular application.

Kirsten PP3 Stripper/Crimper Blades (Old Style)



Mechtrix Description	Mechtrix Part Number	Blade Form Diameter		OEM Part Number
		(in)	(mm)	
Kirsten PP3 Universal-Short	7094	-	-	-
Kirsten PP3 Universal-Long	7095	-	-	-

Kirsten PP3 Stripper/Crimper Blades (New Interlocking Style)



Mechtrix Description	Mechtrix Part Number	Blade Form Diameter		OEM Part Number
		(in)	(mm)	
Kirsten PP3 Universal-Short	17007	-	-	3.0048
Kirsten PP3 Universal-Long	17005	-	-	3.0049

Schleuniger/Kirsten K700 and K710 Stripper/Crimper Machines

Used In These Machines

- Kirsten
- K700 ASC
- K710 ASC

The Schleuniger/Kirsten K700 ASC and K710 ASC Machines use a single set of "Universal" Stripping Blades to remove the insulation from the end of a wire. Mechtrix blades for the Kirsten K700 and 710 Series Machines are made to precision standards from a specially selected tool steel to insure optimum performance and blade life and are produced using state-of-the-art manufacturing techniques.

In addition to the "Universal" Stripping Blades, Mechtrix also offers both our patented M-Series and Full Radius stripping form geometries for processing difficult insulations in the K700 and K710 Series Machines. Please contact Mechtrix for assistance in selecting the appropriate style and size blade for your particular application.

Kirsten K700 and K710 Stripper/Crimper Blades



Mechtrix Description	Mechtrix Part Number	Blade Form Diameter		OEM Part Number
		(in)	(mm)	
Kirsten K700ASC Universal-Short	19104	-	-	431.001.155
Kirsten K700ASC Universal-Long	19105	-	-	431.001.156

Schleuniger Tooling

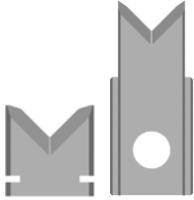
Kirsten K750 ASC and Schleuniger StripCrimp 200 Machines

Used In These Machines

Kirsten
K750 ASC
StripCrimp 200

The Kirsten K750 ASC and Schleuniger StripCrimp 200 Machines use a single set of "Universal" Stripping Blades to remove the insulation from the end of a wire. Mechtrix blades for the Kirsten K750 ASC and Schleuniger StripCrimp 200 Series Machines are made to precision standards from a specially selected tool steel to insure optimum performance and blade life and are produced using state-of-the-art manufacturing techniques.

In addition to the "Universal" Stripping Blades, Mechtrix also offers both our patented M-Series and Full Radius stripping form geometries for processing difficult insulations in the K750 ASC and Schleuniger StripCrimp 200 Series Machines. Please contact Mechtrix for assistance in selecting the appropriate style and size blade for your particular application.



Kirsten K750 and Schleuniger StripCrimp 200 Stripper/Crimper Blades

Mechtrix Description	Mechtrix Part Number	Blade Form Diameter		OEM Part Number
		(in)	(mm)	
Kirsten K750 Universal-Short	19104	-	-	405.103.147
Kirsten K750 Universal-Long	27270			405.103.149

Schleuniger StripCrimp 750 Stripper/Crimper Machines

Used In These Machines

Schleuniger
StripCrimp 750

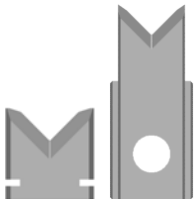
The Schleuniger StripCrimp 750 Machines use a single set of "Universal" Stripping Blades to remove the insulation from the end of a wire. Mechtrix blades for the StripCrimp 750 Series Machines are made to precision standards from a specially selected tool steel to insure optimum performance and blade life and are produced using state-of-the-art manufacturing techniques.

In addition to the "Universal" Stripping Blades, Mechtrix also offers both our patented M-Series and Full Radius stripping form geometries for processing difficult insulations in the StripCrimp 750 Machines. Please contact Mechtrix for assistance in selecting the appropriate style and size blade for your particular application.



Schleuniger StripCrimp 750 Stripper/Crimper Blades (s/n 100346 and below)

Mechtrix Description	Mechtrix Part Number	Blade Form Diameter		OEM Part Number
		(in)	(mm)	
Kirsten K700ASC Universal-Short	19104	-	-	431.001.155
Kirsten K700ASC Universal-Long	19105			431.001.156



Schleuniger StripCrimp 750 Stripper/Crimper Blades (s/n 100347 and above)

Mechtrix Description	Mechtrix Part Number	Blade Form Diameter		OEM Part Number
		(in)	(mm)	
Kirsten K750 Universal-Short	19104	-	-	405.103.147
Kirsten K750 Universal-Long	27270			405.103.149

Schleuniger Tooling

PAWO B12, B16 and B21 Stripper/Crimper Machines

Used In These Machines

PAWO
B12
B16
B21



The PAWO/Schleuniger B12, B16 and B21 Stripper/Crimper Machines use a single set of V-Style Stripping Blades to remove the insulation from the end of a wire. Mechtrix blades for the PAWO/Schleuniger Machines are made to precision standards from a specially selected tool steel to insure optimum performance and blade life and are produced using state-of-the-art manufacturing techniques.

In addition to the V-Style Stripping Blades, Mechtrix also offers Full Radius stripping form geometries for processing difficult insulations in the PAWO/Schleuniger Machines. Please contact Mechtrix for assistance in selecting the appropriate style and size blade for your particular application.

PAWO B12/B16/B21 V-Style Stripping Blades

Mechtrix Description	Mechtrix Part Number	Blade Form Diameter		OEM Part Number
		(in)	(mm)	
PAWO B16-X.XL Stripper/Crimper Blade-Long	-	-	-	1634303XXXX
PAWO B16-X.XS Stripper/Crimper Blade-Short	-	-	-	1604087XXXX
Please contact Mechtrix for specific part number (XXXX = Stripping Blade Form Radius In mm)				



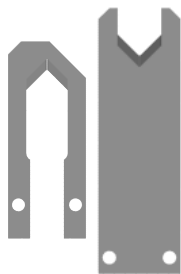
PAWO B12/B16/B21 Full Radius Stripping Blades

Mechtrix Description	Mechtrix Part Number	Blade Form Diameter		OEM Part Number
		(in)	(mm)	
PAWO B16-X.XDL Stripper/Crimper Blade-Long	-	-	-	1634431XXXX
PAWO B16-X.XDS Stripper/Crimper Blade-Short	-	-	-	1626735XXXX
Please contact Mechtrix for specific part number (XXXX = Stripping Blade Form Diameter In mm)				

PAWO/Schleuniger Servo Stripper Machines

Used In These Machines

PAWO
Servo Stripper



The PAWO/Schleuniger Servo Stripper Machines use a single set of V-Style Stripping Blades to remove the insulation from the end of a wire. Mechtrix blades for the PAWO/Schleuniger Machines are made to precision standards from a specially selected tool steel to insure optimum performance and blade life and are produced using state-of-the-art manufacturing techniques.

PAWO Servo Stripper V-Style Stripping Blades

Mechtrix Description	Mechtrix Part Number	Blade Form Diameter		OEM Part Number
		(in)	(mm)	
PAWO Servo Stripper Blade-A (R0.3)	31228	0.02362	0.6	50400870030
PAWO Servo Stripper Blade-B (R0.3)	31229			50810810030
PAWO Servo Stripper Blade-A (R0.6)		0.04724	1.2	50400870060
PAWO Servo Stripper Blade-B (R0.6)				50810810060
Please contact Mechtrix for specific part number (XXXX = Stripping Blade Form Radius In mm)				

Schleuniger Tooling

Special Tooling for Schleuniger Machines

Used In These
Machines

In addition to single conductor stripping blades, Mechtrix also offers multi-conductor stripping blades, jacket stripping blades and slitting tools for most Schleuniger Machines. Please contact Mechtrix for assistance in selecting the appropriate style and size blade for your particular application.

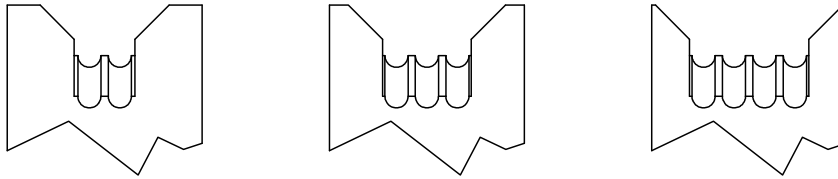
Schleuniger

US-2015
US-2100
US-2500
US-2545
CS-9000
CS-9050
CS-9100
ES-9300
OC-9400
PS-9500

Multi-Conductor Stripping Blades

Available in variety of combinations and configurations to exactly match your particular wire specifications.

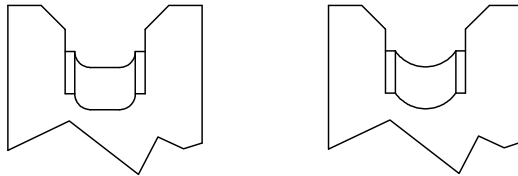
- Number of stripping forms
- Diameter size of stripping forms
- Pitch or spacing between stripping forms



Jacket Stripping Blades

Available in variety of combinations and configurations to exactly match your particular wire specifications.

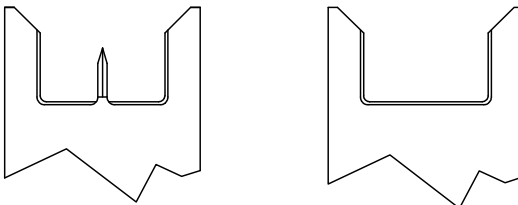
- Flat cables
- Oval cables
- Special cable profiles (not shown)



Slitting Tools

Available in variety of combinations and configurations to exactly match your particular wire specifications. A set of slitting tools consists of two pieces, (1) slitting tool and (1) guide blade.

- Slitting Tool
- Guide Blade



Schleuniger Tooling
