

AMP/Tyco Tooling

AMP/Tyco Table of Contents

AMP Ampomator Blades	Amp - 2
AMP CLS-II, CLS-III, CLS-IV, CLS-IV+ and ADUZI Standard Blades	Amp - 3
AMP CLS-II, CLS-III, CLS-IV, CLS-IV+ and ADUZI Special Blades	Amp - 5
AMP Stripper/Crimper Blades	Amp - 6

Please note that in addition to their own equipment AMP Incorporated/Tyco Electronics also sells private label equipment from Komax, Megomat and Schleuniger. For information on replacement tooling for these machines please see the respective OEM sections of this catalog.

Rev. 02/08/06



Mechtrix Corporation • W147 N9461 Held Drive • Menomonee Falls, WI 53051
Tel (262) 255-6555 • Fax (262) 255-2628 • Website <http://www.mechtrix.com>

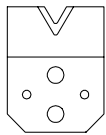
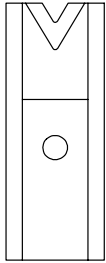
AMP/Tyco Tooling

AMP Ampomator Machines

Used In These
Machines

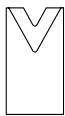
AMP
Ampomator

Mechtrix manufactures a complete selection of cut-off and stripping blades for the AMP Ampomator Machines with either the No. 453406 or No. 681107 Shear Housing. Mechtrix Ampomator Cut-off and Stripping Blades are made to precision standards from a specially selected tool steel to insure optimum performance and blade life and are produced using state-of-the-art manufacturing techniques. Mechtrix Ampomator Stripping Blades have the Mechtrix patented feature of a cutting form which includes a perfectly formed cutting radius. The perfectly formed cutting radius insures optimum cutting of the insulation while the entry angle improves the blade's "gathering" characteristics, thus eliminating the need for wire guides. Please contact Mechtrix for assistance in selecting the appropriate size blade for your particular application.



Ampomator Stripping and Cut-off Blades (Old Shear Housing)

Mechtrix Description	Mechtrix Part Number	Blade Form Diameter		OEM Part Number
		(in)	(mm)	
5054 Stripping Blade-Upper (26-22ga.)	05054	0.03125	0.79	238378-2
5072 Stripping Blade-Lower (26-22ga.)	05072			238379-1
0168 Stripping Blade-Upper (16-20ga.)	00168	0.06250	1.59	238378-4
0169 Stripping Blade-Lower (16-20ga.)	00169			238379-2
0167 Stripping Blade-Upper (12-14ga.)	00167	0.09375	2.38	238378-6
0170 Stripping Blade-Lower (12-14ga.)	00170			238379-3
5074 Stripping Blade-Upper (10ga.)	05074	0.12500	3.18	238378-8
5075 Stripping Blade-Lower (10ga.)	05075			238379-4
0166 Cut-off Blade	00166	-	-	474617-E
0165 Cut-off Blade	00165	-	-	474619-N



Ampomator Stripping and Cut-off Blades (New Shear Housing)

Mechtrix Description	Mechtrix Part Number	Blade Form Diameter		OEM Part Number
		(in)	(mm)	
A20-1457 Stripping Blade (24-26ga.)	01457	0.02000	0.51	467651-1
A32-0421 Stripping Blade (20-22ga.)	00421	0.03125	0.79	467651-2
A16-0152 Stripping Blade (16-18ga.)	00152	0.06250	1.59	467651-3
A332-0153 Stripping Blade (12-14ga.)	00153	0.09375	2.38	467651-4
A8-1102 Stripping Blade (10ga.)	01102	0.12500	3.18	467651-8
ACL-0155 Cut-off Blade	00155	-	-	467647-1
ACL-0154 Cut-off Blade	00154	-	-	467647-2-A

Mechtrix "Ampomator" Stripping Blades are covered by U.S. Pat. 4,630,406



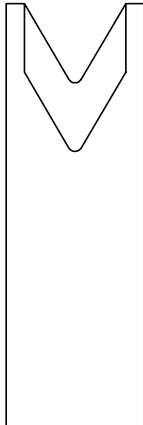
Mechtrix Corporation • W147 N9461 Held Drive • Menomonee Falls, WI 53051
Tel (262) 255-6555 • Fax (262) 255-2628 • Website <http://www.mechtrix.com>

AMP/Tyco Tooling

AMP CLS-II, CLS-III, CLS-IV and CLS-IV+ Stripping Blades

Used In These Machines

AMP
CLS-II
CLS-III
CLS-IV
CLS-IV+
ADUZI



Mechtrix manufactures a complete selection of cut-off and stripping blades for all of the AMP CLS Series Macines. Mechtrix AMP "CLS" Cut-off and Stripping Blades are made to precision standards from a specially selected tool steel to insure optimum performance and blade life and are produced using state-of-the-art manufacturing techniques. Mechtrix AMP "CLS" Stripping Blades have the Mechtrix patented feature of a cutting form which includes a perfectly formed cutting radius. The perfectly formed cutting radius insures optimum cutting of the insulation while the entry angle improves the blade's "gathering" characteristics, thus eliminating the need for wire guides. Please contact Mechtrix for assistance in selecting the appropriate size blade for your particular application.

AMP CLS-II Stripping Blades

Mechtrix Description	Mechtrix Part Number	Blade Form Diameter		OEM Part Number
		(in)	(mm)	
V-096S Stripping Blade-Short (12-14ga.)	14220	0.09600	2.44	812285-2
V-096L Stripping Blade-Long (12-14ga.)	14221			812285-1
V-062S Stripping Blade-Short (16-18ga.)	14222	0.06200	1.57	812285-4
V-062L Stripping Blade-Long (16-18ga.)	14223			812285-3
V-034S Stripping Blade-Short (20-22ga.)	14218	0.03400	0.86	812285-6
V-034L Stripping Blade-Long (20-22ga.)	14219			812285-5
M-028 Stripping Blade-Short (24ga.)	01066	0.02800	0.71	812285-8
M-028L Stripping Blade-Long (24ga.)	01065			812285-7
M-024 Stripping Blade-Short (26ga.)	00269	0.02400	0.61	812285-8
M-024L Stripping Blade-Long (26ga.)	00268			812285-7

AMP CLS-II Cut-off Blades

Mechtrix Description	Mechtrix Part Number	Blade Form Diameter		OEM Part Number
		(in)	(mm)	
MCL Cut-off Blade (22-30ga.)	01393	-	-	-
CL Cut-off Blade (12-20ga.)	00022	-	-	812284-1
CLA Cut-off Blade (10-12ga.)	00024	-	-	812284-2

AMP CLS-III Stripping Blades

Mechtrix Description	Mechtrix Part Number	Blade Form Diameter		OEM Part Number
		(in)	(mm)	
V-096S Stripping Blade-Short (12-14ga.)	14220	0.09600	2.44	853510-2
V-096L Stripping Blade-Long (12-14ga.)	14221			853510-1
V-062S Stripping Blade-Short (16-18ga.)	14222	0.06200	1.57	853510-4
V-062L Stripping Blade-Long (16-18ga.)	14223			853510-3
V-034S Stripping Blade-Short (20-22ga.)	14218	0.03400	0.86	853510-6
V-034L Stripping Blade-Long (20-22ga.)	14219			853510-5
M-028 Stripping Blade-Short (24ga.)	01066	0.02800	0.71	853510-8
M-028L Stripping Blade-Long (24ga.)	01065			853510-7
M-024 Stripping Blade-Short (26ga.)	00269	0.02400	0.61	853510-8
M-024L Stripping Blade-Long (26ga.)	00268			853510-7

AMP CLS-III Cut-off Blades

Mechtrix Description	Mechtrix Part Number	Blade Form Diameter		OEM Part Number
		(in)	(mm)	
MCL Cut-off Blade (22-30ga.)	01393	-	-	-
CL Cut-off Blade (12-20ga.)	00022	-	-	854035-1
CLA Cut-off Blade (10-12ga.)	00024	-	-	854035-2

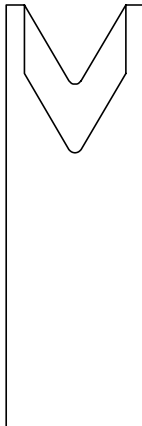


Mechtrix Corporation • W147 N9461 Held Drive • Menomonee Falls, WI 53051
Tel (262) 255-6555 • Fax (262) 255-2628 • Website <http://www.mechtrix.com>

AMP/Tyco Tooling

Used In These
Machines

AMP
CLS-II
CLS-III
CLS-IV
CLS-IV+
ADUZI



AMP CLS-IV Stripping Blades

Mechtrix Description	Mechtrix Part Number	Blade Form Diameter		OEM Part Number
		(in)	(mm)	
V-112S Stripping Blade-Short (10ga.)	12725	0.11200	2.84	1-844765-13
V-112L Stripping Blade-Long (10ga.)	12724			1-844765-14
V-096S Stripping Blade-Short (12ga.)	14220	0.09600	2.44	1-844765-1
V-096L Stripping Blade-Long (12ga.)	14221			1-844765-2
V-076S Stripping Blade-Short (14ga.)	12761	0.07600	1.93	844765-9
V-076L Stripping Blade-Long (14ga.)	12760			1-844765-0
V-062S Stripping Blade-Short (16ga.)	14222	0.06200	1.57	844765-7
V-062L Stripping Blade-Long (16ga.)	14223			844765-8
V-052S Stripping Blade-Short (18ga.)	12759	0.05200	1.32	844765-5
V-052L Stripping Blade-Long (18ga.)	12758			844765-6
V-042S Stripping Blade-Short (20ga.)	12757	0.04200	1.07	844765-3
V-042L Stripping Blade-Long (20ga.)	12756			844765-4
V-034S Stripping Blade-Short (22-24ga.)	14218	0.03400	0.86	844765-1
V-034L Stripping Blade-Long (22-24ga.)	14219			844765-2
V-022S Stripping Blade-Short (26ga.)	12755	0.02200	0.56	1-844765-9
V-022L Stripping Blade-Long (26ga.)	12754			2-844765-0

AMP CLS-IV Cut-off Blades

Mechtrix Description	Mechtrix Part Number	Blade Form Diameter		OEM Part Number
		(in)	(mm)	
MCL Cut-off Blade (22-30ga.)	01393	-	-	-
CL Cut-off Blade (12-20ga.)	00022	-	-	844764-1
CLA Cut-off Blade (10-12ga.)	00024	-	-	844764-2

AMP CLS-IV+ Stripping Blades (also used in the ADUZI)

Mechtrix Description	Mechtrix Part Number	Blade Form Diameter		OEM Part Number
		(in)	(mm)	
U90S Universal Stripping Blade-Short	18110	-	-	356553-1
U90L Universal Stripping Blade-Long	18109	-	-	356553-2

AMP CLS-IV+ Cut-off Blades (also used in the ADUZI)

Mechtrix Description	Mechtrix Part Number	Blade Form Diameter		OEM Part Number
		(in)	(mm)	
Universal Cut-Off Blade CLS-IV+	18108	-	-	844764-5

A set of blades for the AMP CLS Machine consists of two (2) Strip Blades-Short, two (2) Strip Blades-Long and two (2) Cut-off Blades.

AMP CLS-II, CLS-III, CLS-IV, CLS-IV+ and ADUZI Toolholders

Mechtrix Description	Mechtrix Part Number	Blade Form Diameter		OEM Part Number
		(in)	(mm)	
Mechtrix AMP CLS Toolholder	01139-500	-	-	568964-1-C

Mechtrix AMP "CLS" Series Stripping Blades are protected by U.S. Patent 4,630,406 and U.S. Patent 4,577,405



Mechtrix Corporation • W147 N9461 Held Drive • Menomonee Falls, WI 53051
Tel (262) 255-6555 • Fax (262) 255-2628 • Website <http://www.mechtrix.com>

AMP/Tyco Tooling

AMP CLS-II, CLS-III, CLS-IV and CLS-IV+ Special Stripping Blades

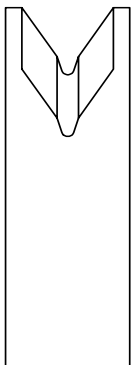
Used In These Machines

- AMP
- CLS-II
- CLS-III
- CLS-IV
- CLS-IV+
- ADUZI

In addition to the standard replacement stripping blades for the AMP CLS Series, Mechtrix also offers both our patented M-Series and ID-Series stripping form geometries for processing difficult insulations or wire types. A brief description of each of the two types of blades is listed below, for more complete information on these types of blades please refer to the Artos section of this catalog. Please contact Mechtrix for assistance in selecting the appropriate style and size blade for your particular application.

M- Series Stripping Blades

Mechtrix M-Series Stripping Blades are designated "M" as they incorporate a MECHTRIX patented blade design which offers a compound entry angle into the cutting portion of the blade. This design feature, while continuing to offer the advantages of a "V" type design (excellent wire gathering and adjustability) facilitates a higher degree of circumferential cut around a wire's conductor.



M-Series Blades are available in a wide range of closely incremented radii sizes and offer improved performance when processing wire which require a cutting configuration which closely matches the wire's conductor diameter. This feature is of greatest benefit when processing insulations which are either very soft (i.e., Neoprene or Silicon), very hard and thin (i.e., Teflon, etc.), or just very thin.

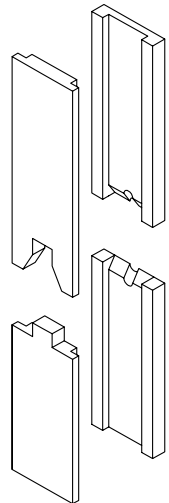
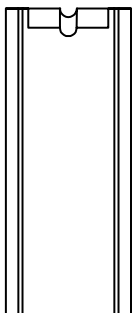
Mechtrix M-Series Stripping Blades

Mechtrix Description	Mechtrix Part Number	Blade Form Diameter		OEM Part Number
		(in)	(mm)	
M-Series Blades are available in 0.004" and 0.008" increments in the following sizes: M-016 thru M-158 Long and Short	-	-	-	-

ID-Series Stripping Blades

Mechtrix ID-Series Stripping Blades are a patented die-type or butting style stripping blade design. The "ID" designates that the blades are Interlocking Die-Type Stripping Blades which incorporate a unique modular concept for mixing and matching stripping blades, guides and supports for virtually any combination of wire conductor and insulation diameters.

ID-Series Blades are also available in a wide range of closely incremented radii sizes and are the only style of blades that form a perfectly round stripping form that is mechanically defined by the blades actually stopping against one another. The guide and support components also mechanically control not only the gathering and centering of the wire into the stripping blades but also the maximum depth that each blade can cut into the insulation during stripping. These blades are very well suited to applications such as cross-link or other exotic insulations that require extra control of the depth of cut.



Mechtrix ID-Series Stripping Blades

Mechtrix Description	Mechtrix Part Number	Blade Form Diameter		OEM Part Number
		(in)	(mm)	
ID-Series Blades are available in 0.1mm increments in the following sizes: ID-0.4 thru ID-9.0 Long and Short	-	-	-	-

Mechtrix "M" and "ID" Series Stripping Blades are protected by U.S. Patent 5,025,687 and U.S. Patent 4,577,405



Mechtrix Corporation • W147 N9461 Held Drive • Menomonee Falls, WI 53051
Tel (262) 255-6555 • Fax (262) 255-2628 • Website <http://www.mechtrix.com>

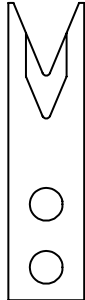
AMP/Tyco Tooling

AMP Stripper/Crimper Machines

Used In These Machines

AMP Stripper/Crimper

Mechtrix manufactures a complete selection stripping blades for the AMP Stripper/Crimper Machines. Mechtrix AMP Stripper/Crimper Blades are made to precision standards from a specially selected tool steel to insure optimum performance and blade life and are produced using state-of-the-art manufacturing techniques. Mechtrix AMP Stripper/Crimper Blades have the Mechtrix patented feature of a cutting form which includes a perfectly formed cutting radius. The perfectly formed cutting radius insures optimum cutting of the insulation while the entry angle improves the blade's "gathering" characteristics, thus eliminating the need for wire guides. Please contact Mechtrix for assistance in selecting the appropriate size blade for your particular application.



AMP Stripper/Crimper Blades

Mechtrix Description	Mechtrix Part Number	Blade Form Diameter		OEM Part Number
		(in)	(mm)	
12ga. AMP Stripper/Crimper Blade	11489	0.10800	2.74	463310-1
14ga. AMP Stripper/Crimper Blade	11490	0.09000	2.29	463310-2
16ga. AMP Stripper/Crimper Blade	10337	0.07400	1.88	463310-3
18ga. AMP Stripper/Crimper Blade	10338	0.06000	1.52	463310-4
20ga. AMP Stripper/Crimper Blade	10336	0.04600	1.17	463310-5
22ga. AMP Stripper/Crimper Blade	10339	0.04000	1.02	463310-6
24ga. AMP Stripper/Crimper Blade	10340	0.03200	0.81	463310-7
26ga. AMP Stripper/Crimper Blade	11491	0.02600	0.66	463310-8
28ga. AMP Stripper/Crimper Blade	11492	0.02200	0.56	463310-9

A set of blades for the AMP Stripper/Crimper Machine consists of two (2) Strip Blades.

Mechtrix "AMP Stripper/Crimper" Stripping Blades are covered by U.S. Pat. 4,630,406



Mechtrix Corporation • W147 N9461 Held Drive • Menomonee Falls, WI 53051
Tel (262) 255-6555 • Fax (262) 255-2628 • Website <http://www.mechtrix.com>